



LEGEND

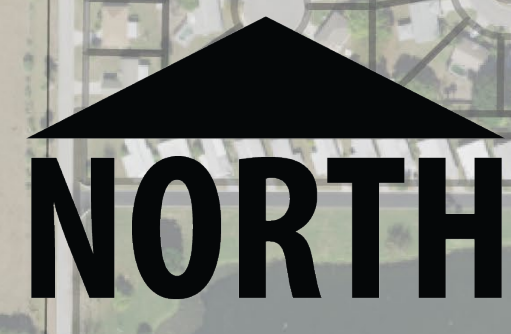
PROJECT ELEMENTS

- Operational/Safety Improvements
- Construct Bridge Culvert
- Rehabilitate Pedestrian Tunnel
- Construct New or Enhanced Crossing
- Improved Bus Stops
- Palmetto Trails Network Segments
- Proposed SUNTrail Alignment

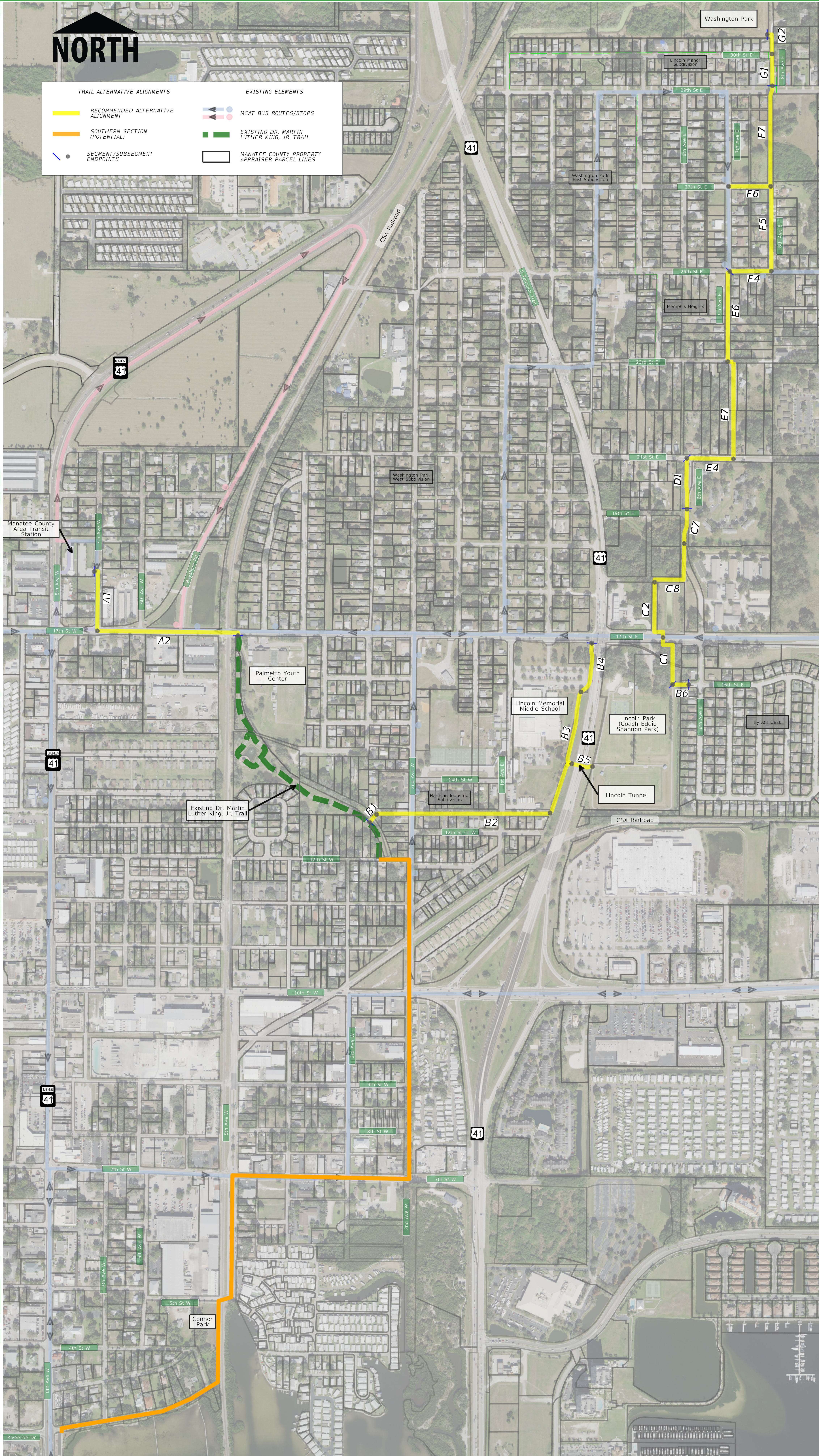
NON-PROJECT ELEMENTS

- Existing Trails
- CRA Plan Trails
- Future SUNTrail Extension
- Programmed Multi-Use Path to Bradenton





TRAIL ALTERNATIVE ALIGNMENTS	EXISTING ELEMENTS
RECOMMENDED ALTERNATIVE ALIGNMENT	MCAT BUS ROUTES/STOPS
SOUTHERN SECTION (POTENTIAL)	EXISTING DR. MARTIN LUTHER KING, JR. TRAIL
SEGMENT/SUBSEGMENT ENDPOINTS	MANATEE COUNTY PROPERTY APPRAISER PARCEL LINES





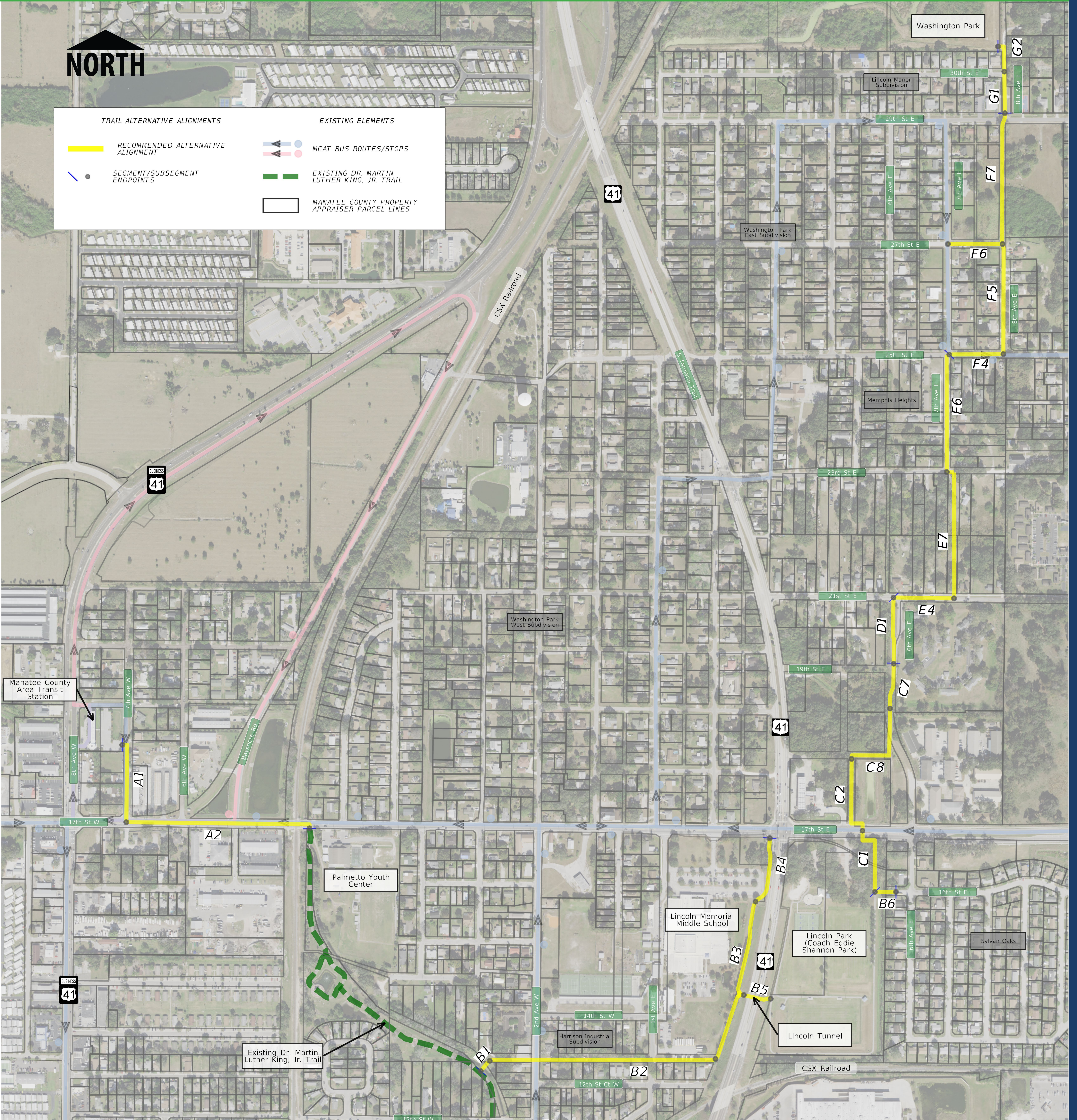
Northern and Middle Section Consultant-Recommended Routes

Palmetto Trails NETWORK | PD&E STUDY



October 2024

Manatee County – FPID No.: 444857-1-22-01





NORTH

Existing Dr. Martin Luther King, Jr. Trail

Harrison Industrial Subdivision

Connor Park

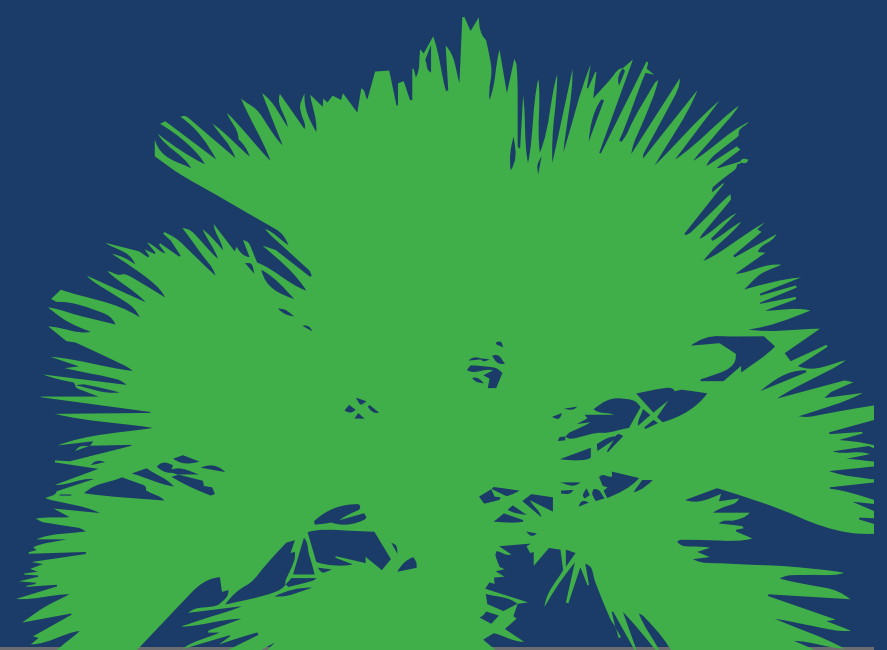
BUSINESS 41

- RECOMMENDED MIDDLE SECTION ALIGNMENT
- SOUTHERN SECTION ORIGINAL ALIGNMENT
- SOUTHERN SECTION ALTERNATIVE ALIGNMENT POSSIBLY SHARED ROADS
- SOUTHERN SECTION ALTERNATIVE ALIGNMENT POSSIBLY TRAILS
- SEGMENT/SUBSEGMENT ENDPOINTS
- MCAT BUS ROUTES/STOPS
- EXISTING DR. MARTIN LUTHER KING, JR. TRAIL
- MANATEE COUNTY PROPERTY APPRAISER PARCEL LINES



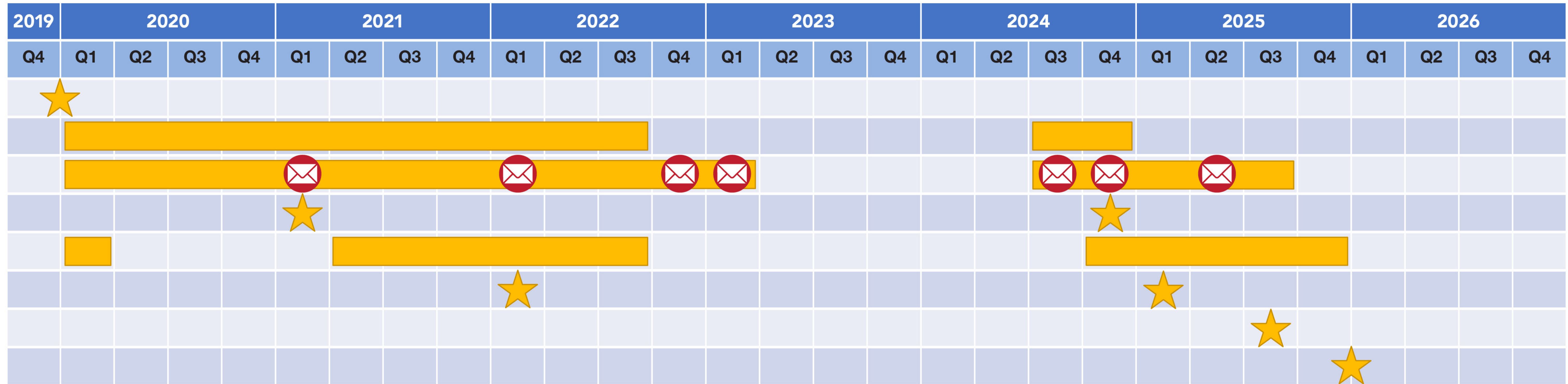
Project Schedule*

Palmetto Trails
NETWORK | PD&E STUDY



October 2024

Manatee County – FPID No.: 444857-1-22-01



*Preliminary subject to change

KEY: ★ = Milestone ✉ = Newsletter

