

## EVALUATION OF NEW SOUTHERN SECTION BEGINS

The Florida Department of Transportation (FDOT), District One, on behalf of Manatee County, is expanding the limits of the Project Development and Environment (PD&E) Study for a proposed shared use pathway through the City of Palmetto. The pathway is one of six transportation improvements proposed in Manatee County’s BUILD (now branded RAISE) and T-HUD grant applications, known collectively as the Palmetto Trails Network Plan (PTNP).

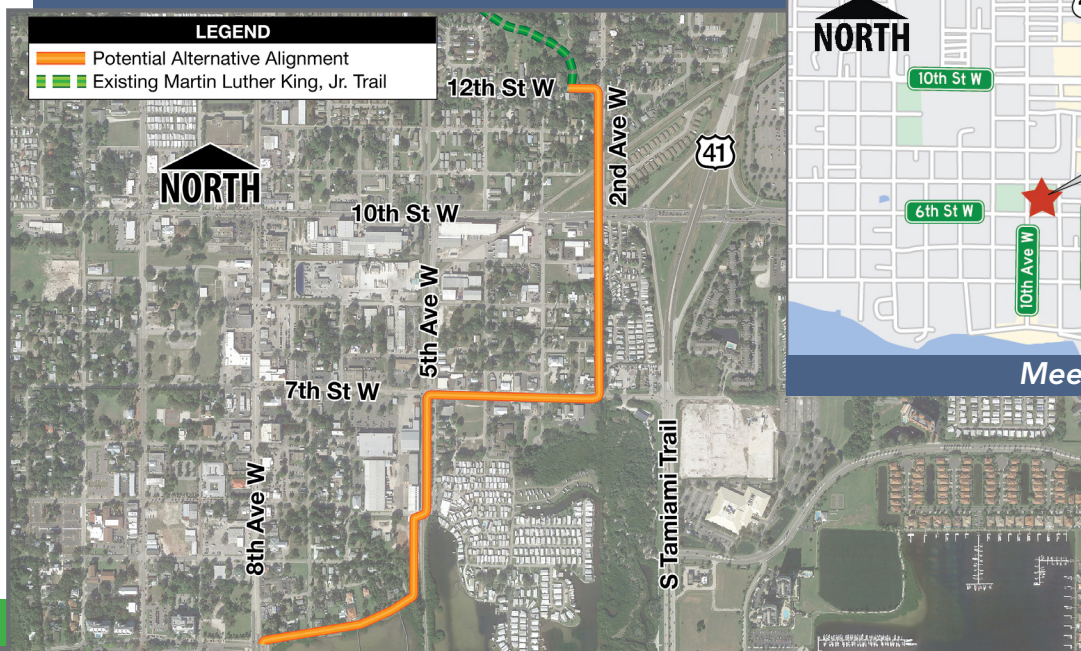
The Palmetto Trails Network PD&E Study is currently evaluating the Middle Section which includes trail segments between the Manatee County Area Transit Center, Palmetto Youth Center, Dr. Martin Luther King Jr. Trail, Lincoln Memorial Middle School, and Lincoln Park (Coach Eddie Shannon Park) as well as the Northern Section which includes the development of trail segments connecting Lincoln Park (Coach Eddie Shannon Park) and Washington Park through the neighborhoods just east of US 41. The new Southern Section of the study area includes the evaluation and development of trail segments and “complete street” facilities (traffic calming, shared bicycle markings on the road, and sidewalks) between the Green Bridge at US 41 Business, Connor Park, and Dr. Martin Luther King Jr. Park.

## NEIGHBORHOOD FOCUS GROUP RESCHEDULED

Your input and participation play an important role in this study process. We will be conducting a Southern Section neighborhood focus group (open house format) on Wednesday, October 30, 2024, at Sutton Park located at 950 6th Street West, Palmetto, FL 34221. You are invited to attend anytime between 4:00 p.m. and 6:30 p.m. to view project displays describing the anticipated trail network and its features, speak with project staff, and complete a short questionnaire.

### WHAT IS A PD&E STUDY?

A PD&E Study is an environmental and engineering process developed by the FDOT to determine social, economic, natural, and physical environmental effects associated with a proposed transportation improvement project. The process follows procedures set forth in the National Environmental Policy Act of 1969 and federal and state laws and regulations. It requires the combined efforts of professional engineers, planners, and scientists who collect and analyze project-related information to develop the best solution for transportation needs. An important component of the process is public and agency coordination.






**Southern Section Map**



# Palmetto Trails NETWORK | PD&E STUDY

## CONTACT INFORMATION

-  Michelle Rutishauser  
FDOT District One Project Manager
-  801 N. Broadway Avenue, MS 1-40  
Bartow, FL 33830
-  Phone: (813) 380-7121
-  Email: [Michelle.Rutishauser@dot.state.fl.us](mailto:Michelle.Rutishauser@dot.state.fl.us)



[www.swflroads.com/palmettotrailsnetwork](http://www.swflroads.com/palmettotrailsnetwork)

Para Preguntas En Español  
Sra. Karina Della-Sera (863) 519-2750

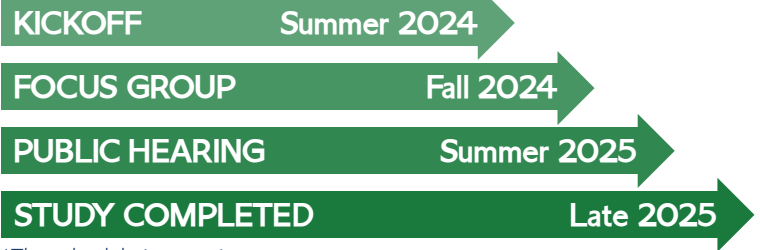
The environmental review, consultation, and other actions required by applicable federal environmental laws for this project are being, or have been, carried out by FDOT pursuant to 23 U.S.C. § 327 and a Memorandum of Understanding dated May 26, 2022, and executed by the Federal Highway Administration and the FDOT.

Public participation is solicited without regard to race, color, national origin, age, sex, religion, disability, or family status. Persons wishing to express their concerns relative to FDOT compliance with Title VI may do so by contacting Cynthia Sykes, Title VI Coordinator, at (863) 519-2287 or by email at [Cynthia.Sykes@dot.state.fl.us](mailto:Cynthia.Sykes@dot.state.fl.us).

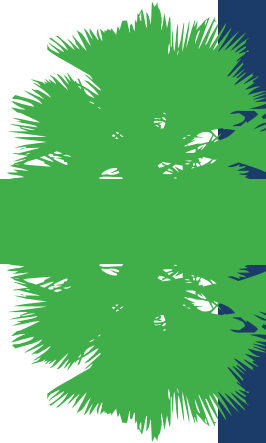
## Get Involved TODAY!

It's your community and this is going to be your trail! Your feedback and participation will play an important role in the study process. Please share your comments and suggestions with us throughout the duration of the study either by mail or online. There will be upcoming opportunities to participate in-person or online, including a neighborhood focus group and, ultimately, a formal public hearing. For additional information and updates, visit us online at: [www.swflroads.com/palmettotrailsnetwork](http://www.swflroads.com/palmettotrailsnetwork)

## Project Schedule\*



\*The schedule is tentative.



Florida Department of Transportation  
Environmental Management Office  
Palmetto Trails Network | PD&E Study  
801 N. Broadway Avenue, MS 1-40  
Bartow, FL 33830

