

February 19 and February 27, 2025

Manatee County – FPID No.: 444857-1

SOUTHERN SECTION PUBLIC WORKSHOP

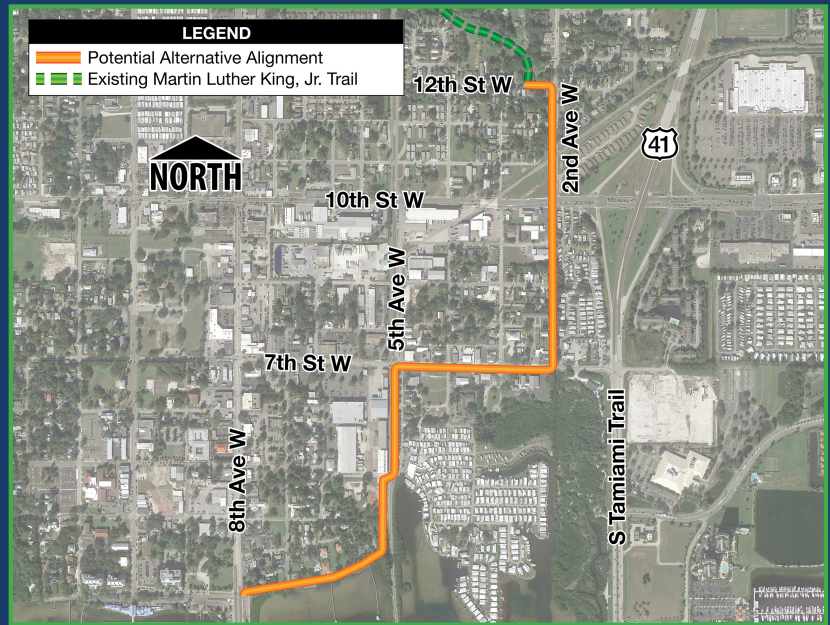
The Florida Department of Transportation (FDOT), District One, welcomes you to the Southern Section Public Workshop for the Palmetto Trails Network Project Development & Environment (PD&E) Study. This study is being conducted to evaluate alignments of a proposed shared use pathway and alternative facilities to address the need to reestablish connections lost through the construction of US 41 through the heart of Palmetto.

FDOT, District One, began a PD&E study in spring 2020 to evaluate the Middle Section which includes trail segments between the Manatee County Area Transit Center, Palmetto Youth Center, Dr. Martin Luther King Jr. Trail, Lincoln Memorial Middle School, and Lincoln Park (Coach Eddie Shannon Park), as well as the Northern Section which includes the development of trail segments connecting Lincoln Park (Coach Eddie Shannon Park) and Washington Park through the neighborhoods just east of US 41 in Manatee County. In summer 2024, the study limits were expanded to include the Southern Section (see figure at right) which involves the evaluation and development of trail segments and “complete street” facilities (traffic calming, shared bicycle markings on the road, and sidewalks) between the Green Bridge at US 41 Business, Connor Park, and Dr. Martin Luther King Jr. Park.

Now we want to hear from you! This Southern Section Public Workshop is being held to present information about the preliminary alternatives and the engineering and environmental analyses completed to date. This workshop provides the public an opportunity to offer feedback on the proposed alternatives to be included as part of the public meeting record.

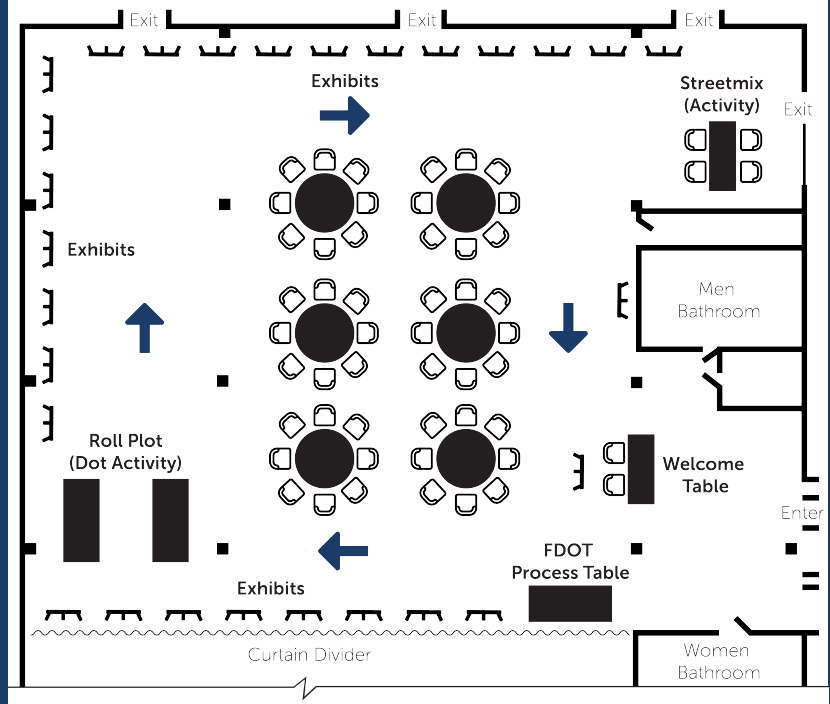
PROJECT GOALS

- Reestablish multimodal, community connections throughout the City of Palmetto and Manatee County, that were previously lost through the construction of US 41.
- Provide safe and viable travel options for the community to access area destinations.
- Support quality of life and economic objectives of the surrounding area.



AVAILABLE TONIGHT

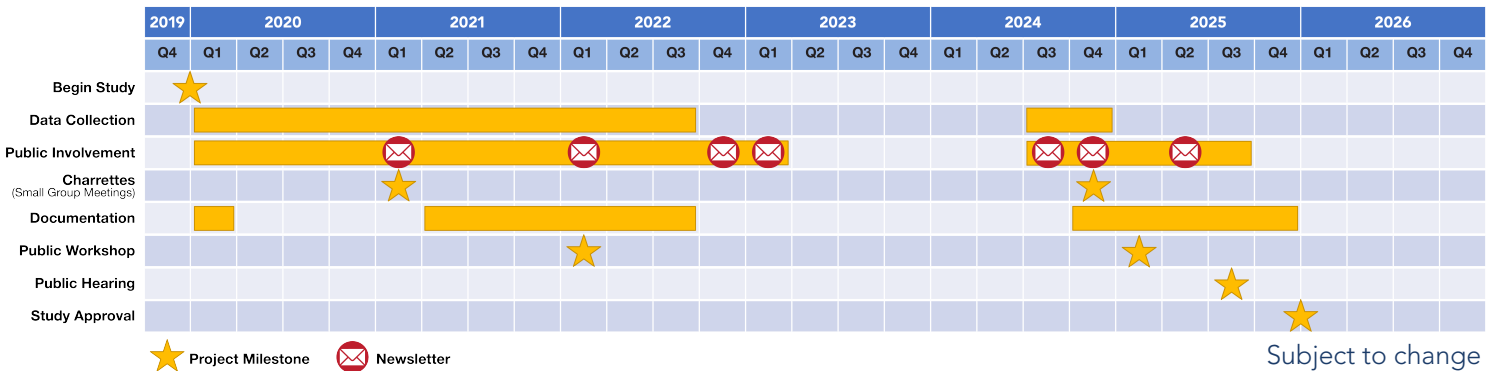
- ✓ Speak with the Project Team to ask questions
- ✓ View the exhibits
- ✓ Fill out a comment form and questionnaire
- ✓ Engage in various workshop activities



WHAT IS A PD&E STUDY?

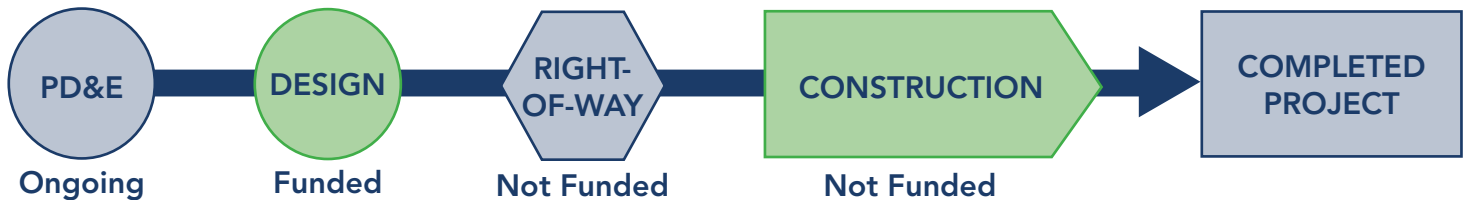
A PD&E Study is an environmental and engineering process developed by the FDOT to determine social, economic, natural, and physical environmental effects associated with a proposed transportation improvement project. The process follows procedures set forth in the National Environmental Policy Act of 1969 and federal and state laws and regulations. It requires the combined efforts of professional engineers, planners, and scientists who collect and analyze project-related information to develop the best solution for transportation needs. An important component of the process is public and agency coordination.

PROJECT SCHEDULE



TRANSPORTATION DEVELOPMENT PROCESS

We Are Here



YOU MAY SHARE YOUR COMMENTS ABOUT THE PROJECT IN SEVERAL WAYS:

At the In-Person Public Meeting

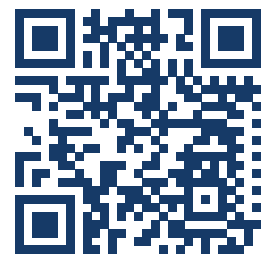
Complete a comment form and place it in the comment box at the meeting or mail to:
Michelle Rutishauser, FDOT Project Manager
801 N. Broadway Avenue, MS 1-40, Bartow, FL 33830

Email Comments

Email comments to the FDOT Project Manager, Michelle Rutishauser, at:
Michelle.Rutishauser@dot.state.fl.us

Visit the Project Website

Submit your comments through the project website at: www.swflroads.com/palmettotrailsnetwork



For more information, scan the QR code to visit the project website.

**ALL COMMENTS MUST BE POSTMARKED BY MARCH 10, 2025
TO BE INCLUDED AS PART OF THE PUBLIC MEETING RECORD.**

FDOT solicits public participation without regard to race, color, national origin, age, sex, religion, disability or family status. People who require special accommodations under the Americans with Disabilities Act or who require translation services (free of charge) should contact Cynthia Sykes, District One Title VI Coordinator, at (863) 519-2287, or email at Cynthia.Sykes@dot.state.fl.us at least seven days prior to the public meeting.

The environmental review, consultation, and other actions required by applicable federal environmental laws for this project are being, or have been, carried out by FDOT pursuant to 23 U.S.C. §327 and a Memorandum of Understanding dated May 26, 2022 and executed by the Federal Highway Administration and FDOT.