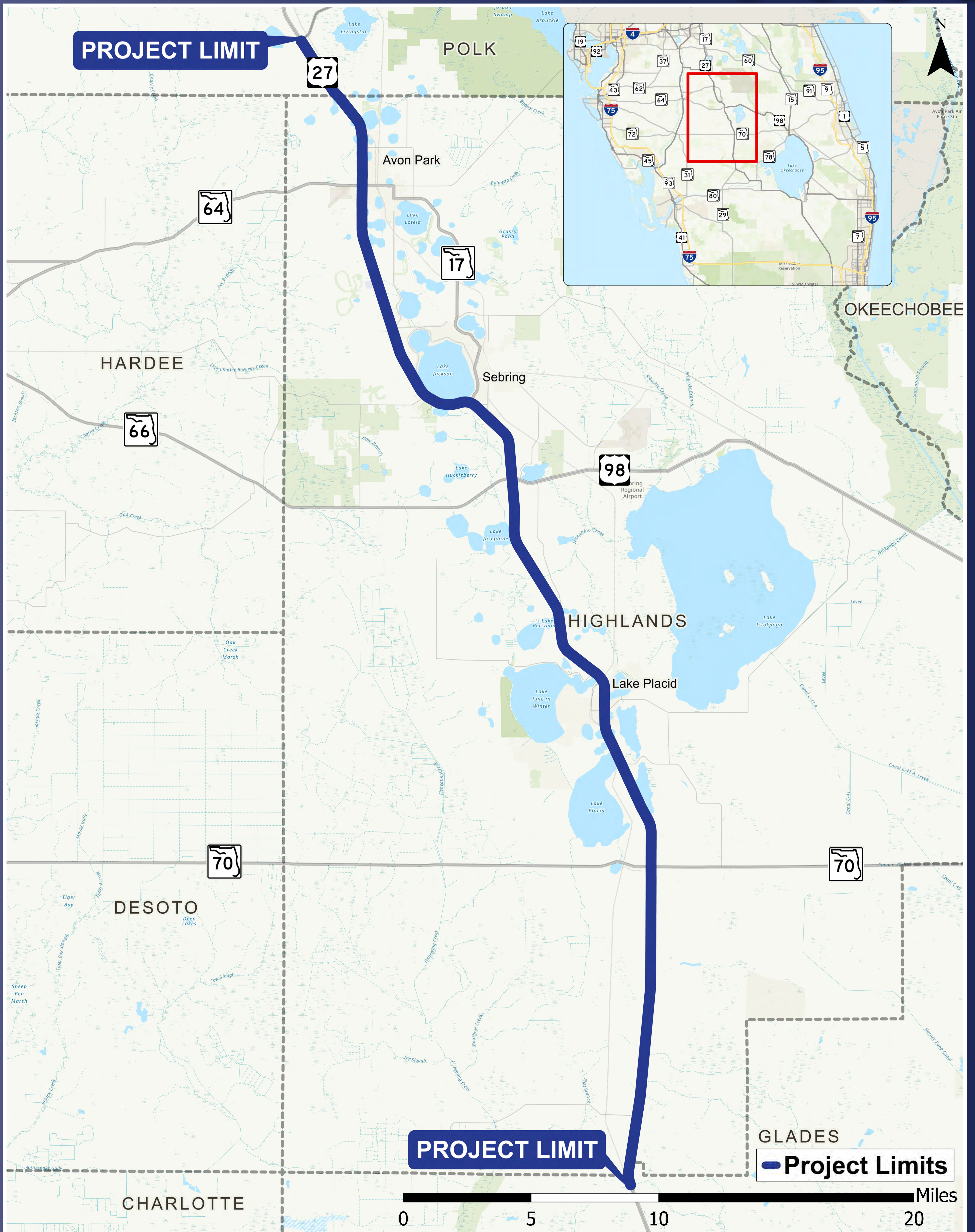
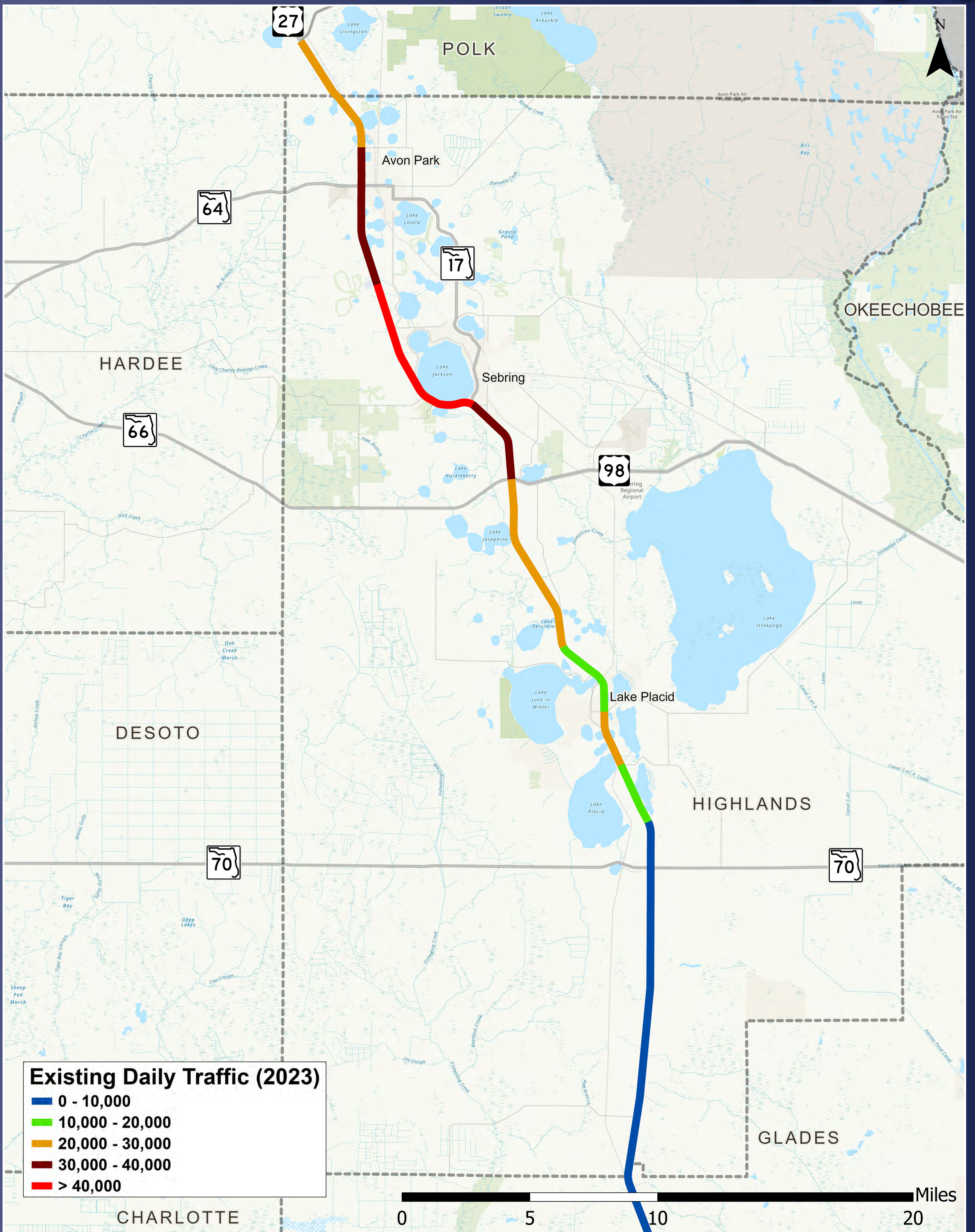


# Project Study Area

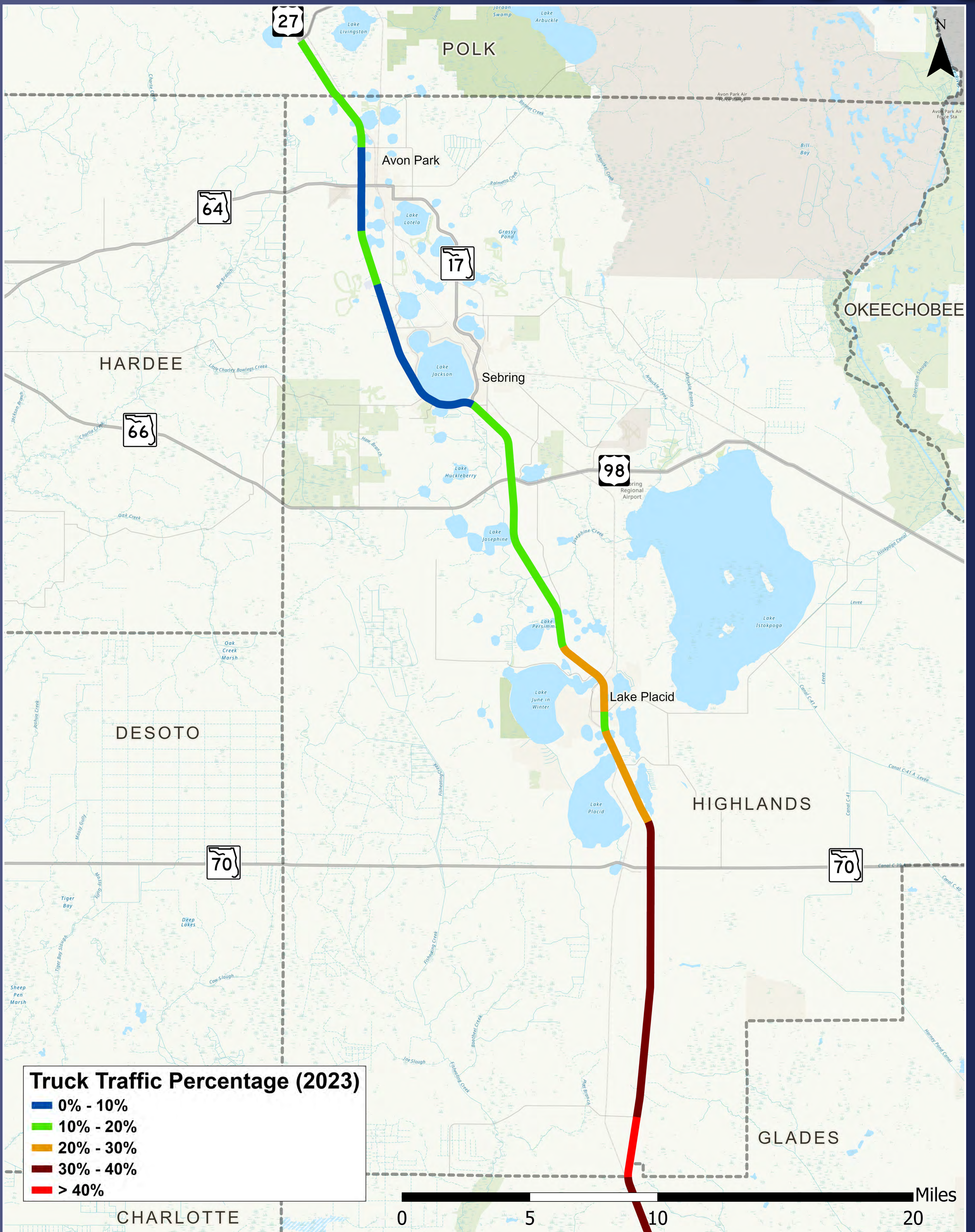
## Highlands County Feasibility Study



# Existing Daily Traffic 2023

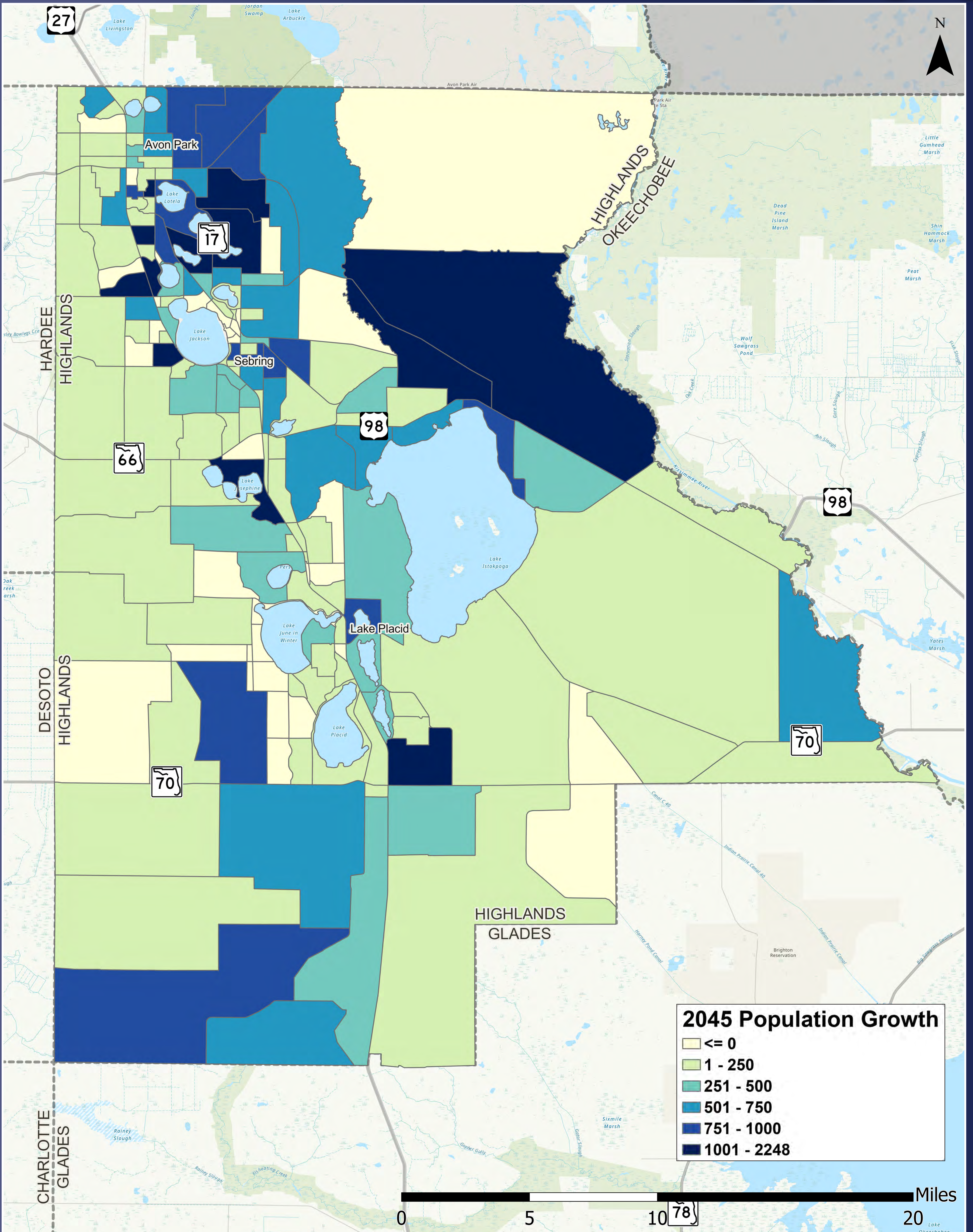


# Existing Truck Traffic 2023



# Population Growth

## 2045 Population Growth



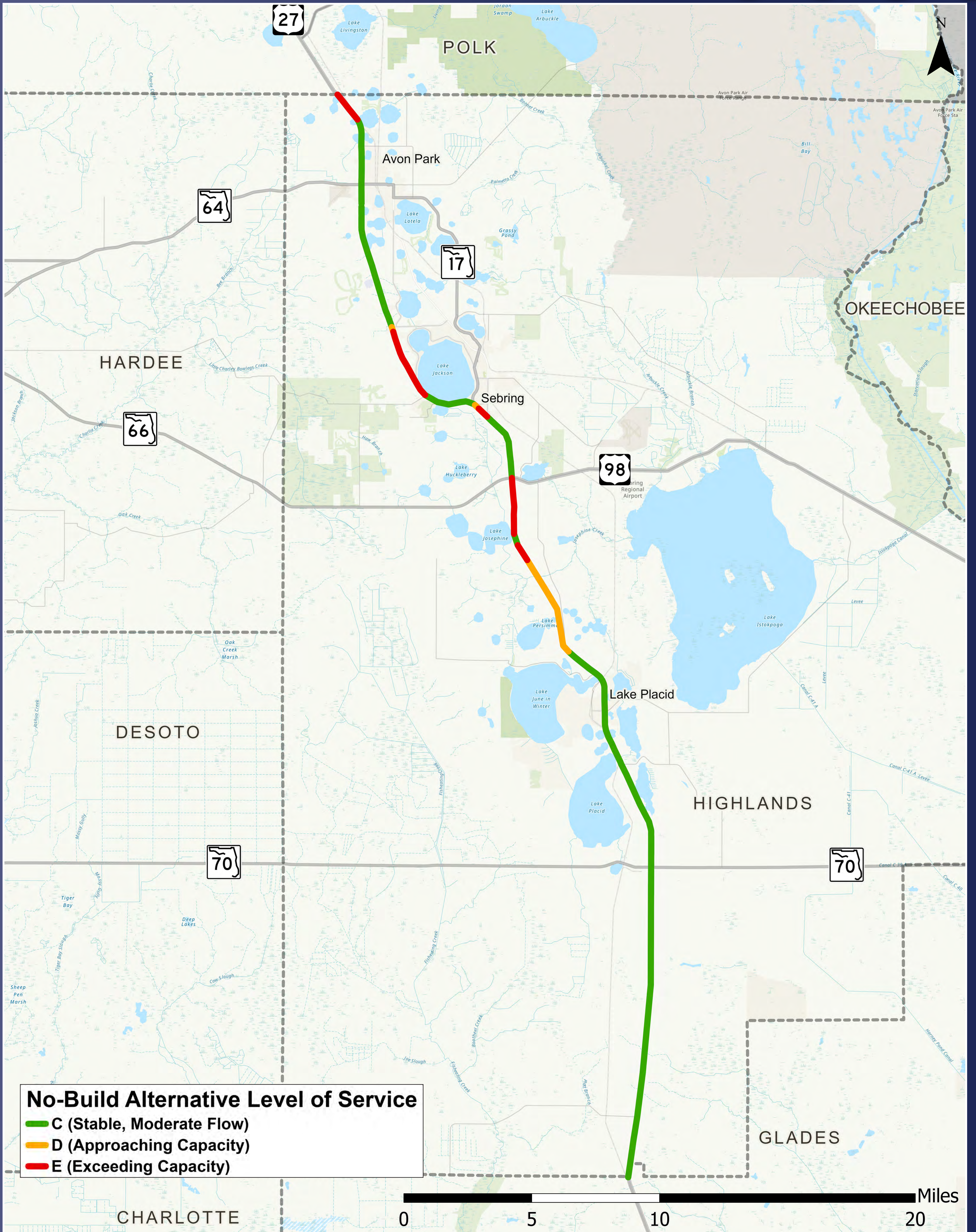
SOURCE: FDOT D1 REGIONAL PLANNING MODEL



Highlands County, Florida  
Financial Project ID: 449503-1

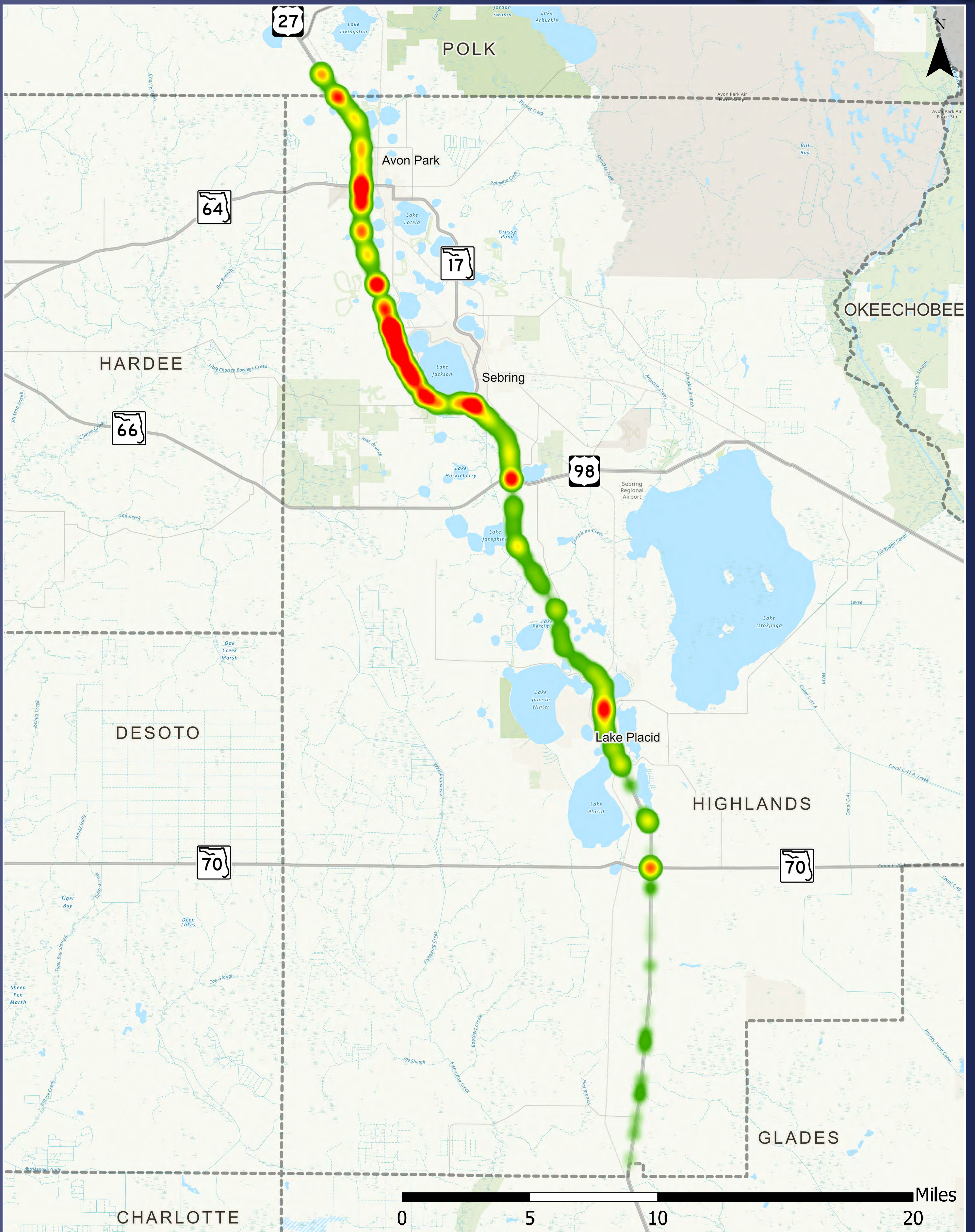
**HIGHLANDS COUNTY FEASIBILITY STUDY**  
PUBLIC MEETING | SEPTEMBER 2024

# 2045 - No Build Alternative Traffic Level of Service (LOS)



# US 27 Crash Heat Map

## 5-Years of Crash Data (2019-2023)

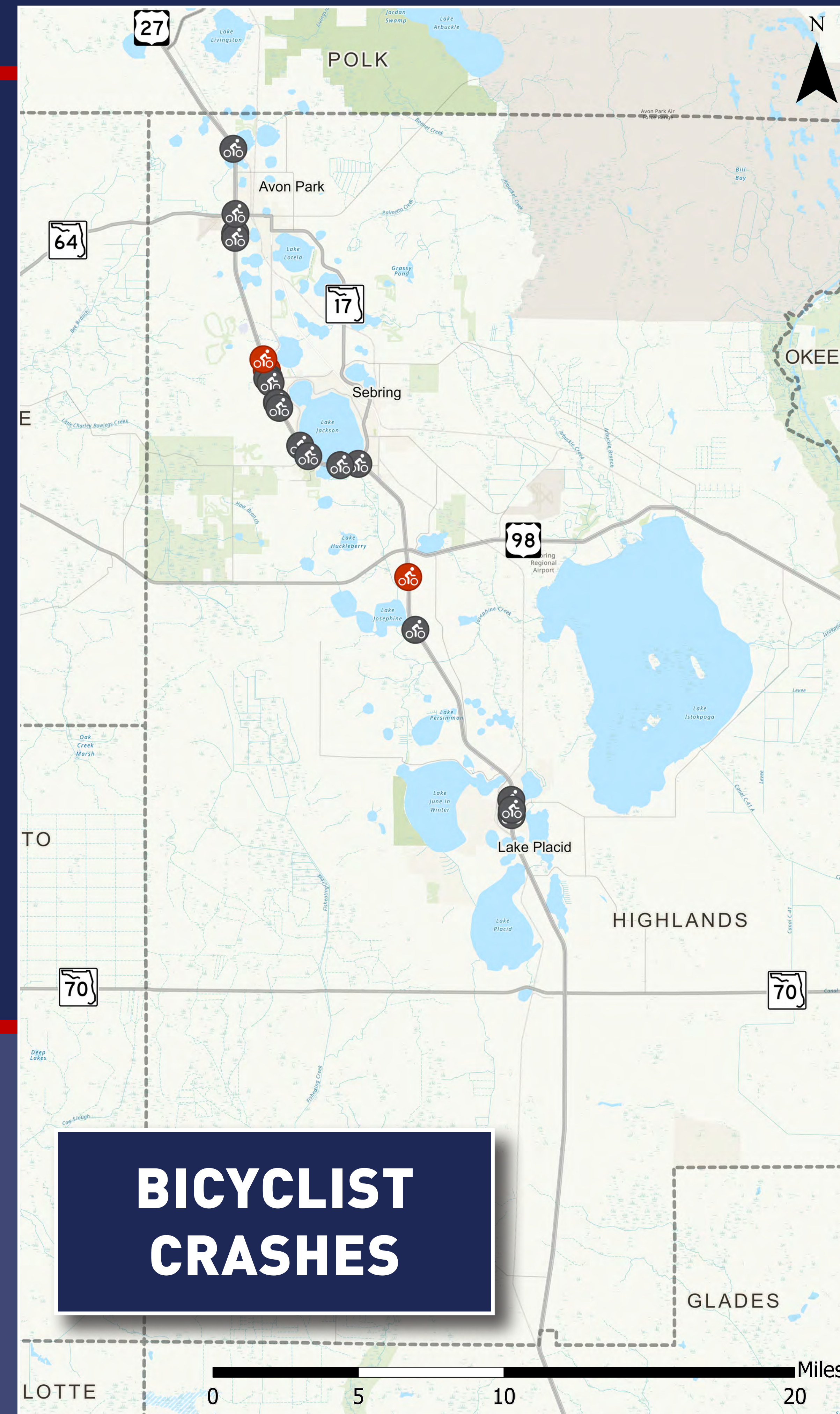
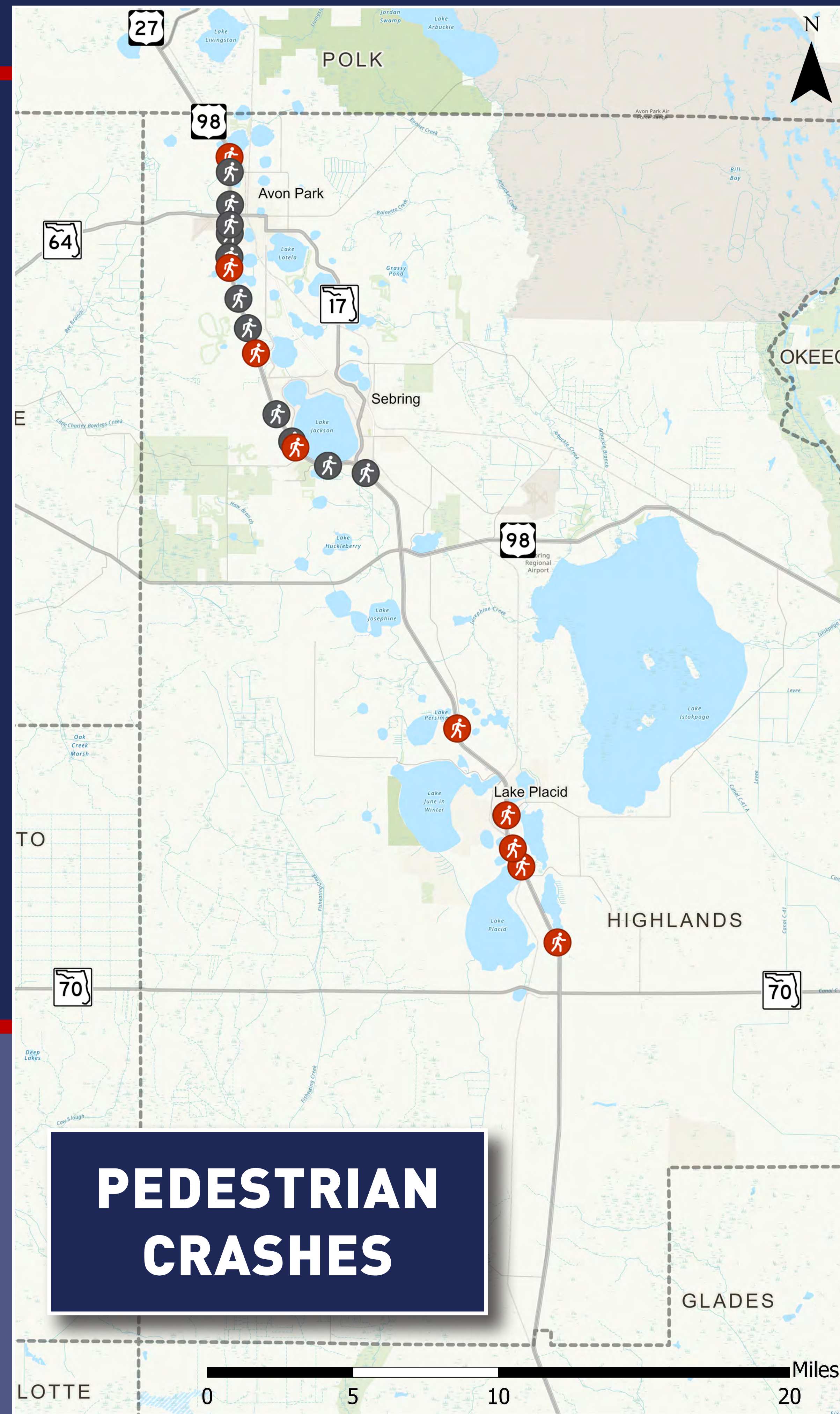


# Bicycle and Pedestrian Crashes

## 2019 - 2023



-  Pedestrian Fatality (10)
-  Pedestrian All Others (12)
-  Bicyclist Fatality (3)
-  Bicyclist All Others (18)



# Vehicular Crashes

## 2019 - 2023



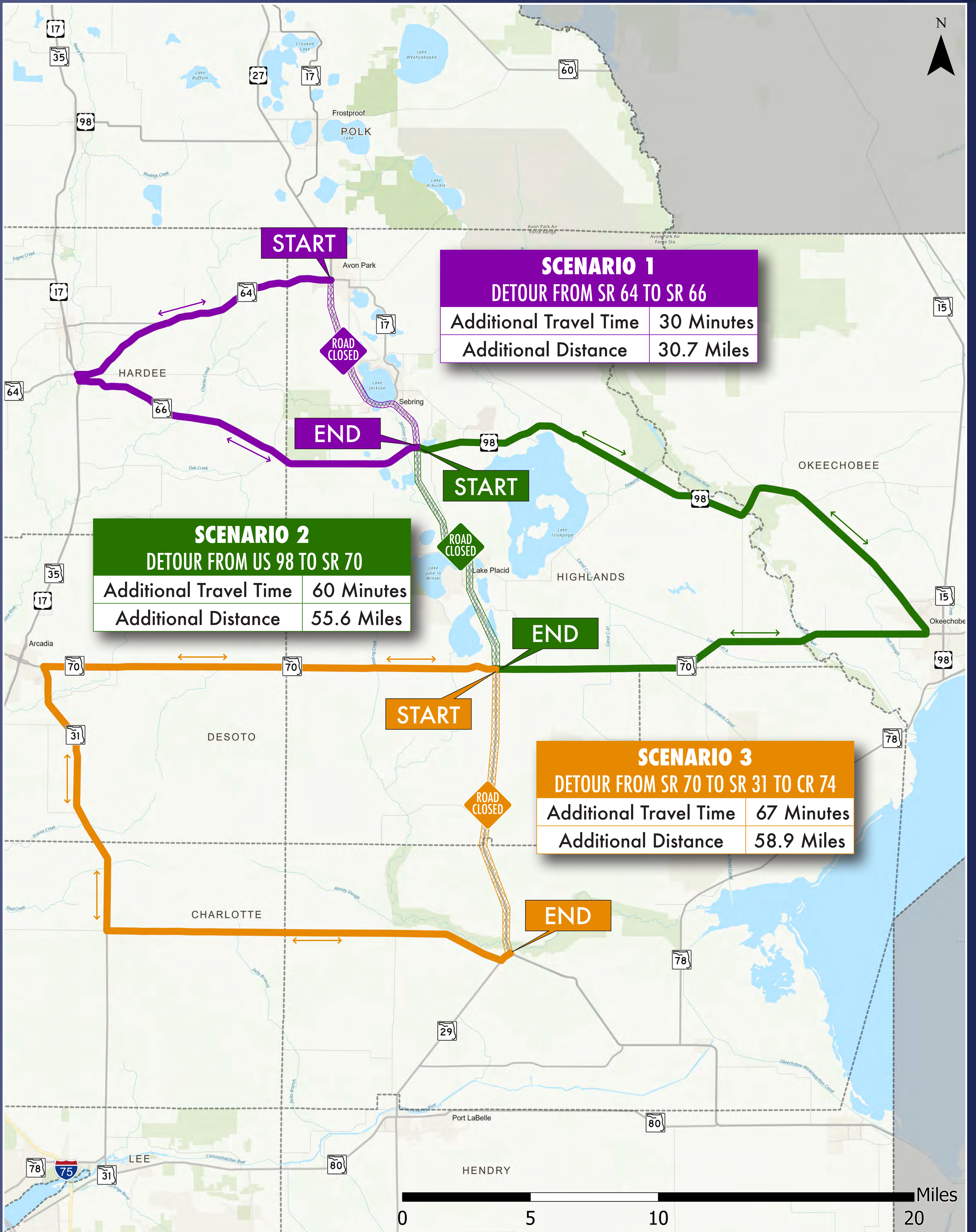
- Serious Injury Crashes (145)
- Fatal Crashes (57)





# Detour and Evacuation Routes

## In the Event of US 27 Closure



# Highlands County Feasibility Study Results



## POPULATION TRENDS

Highlands County is expected to see a 54% increase in population by 2045.



## SAFETY

12 miles of US 27 have crash rates above the statewide average for similar facilities.



## FREIGHT

US 27 serves as a major freight corridor carrying up to 43% truck traffic.



## EVACUATIONS/DETOURS

Limited existing parallel facilities to US 27. Potential 67-minute detour to the nearest alternative route.

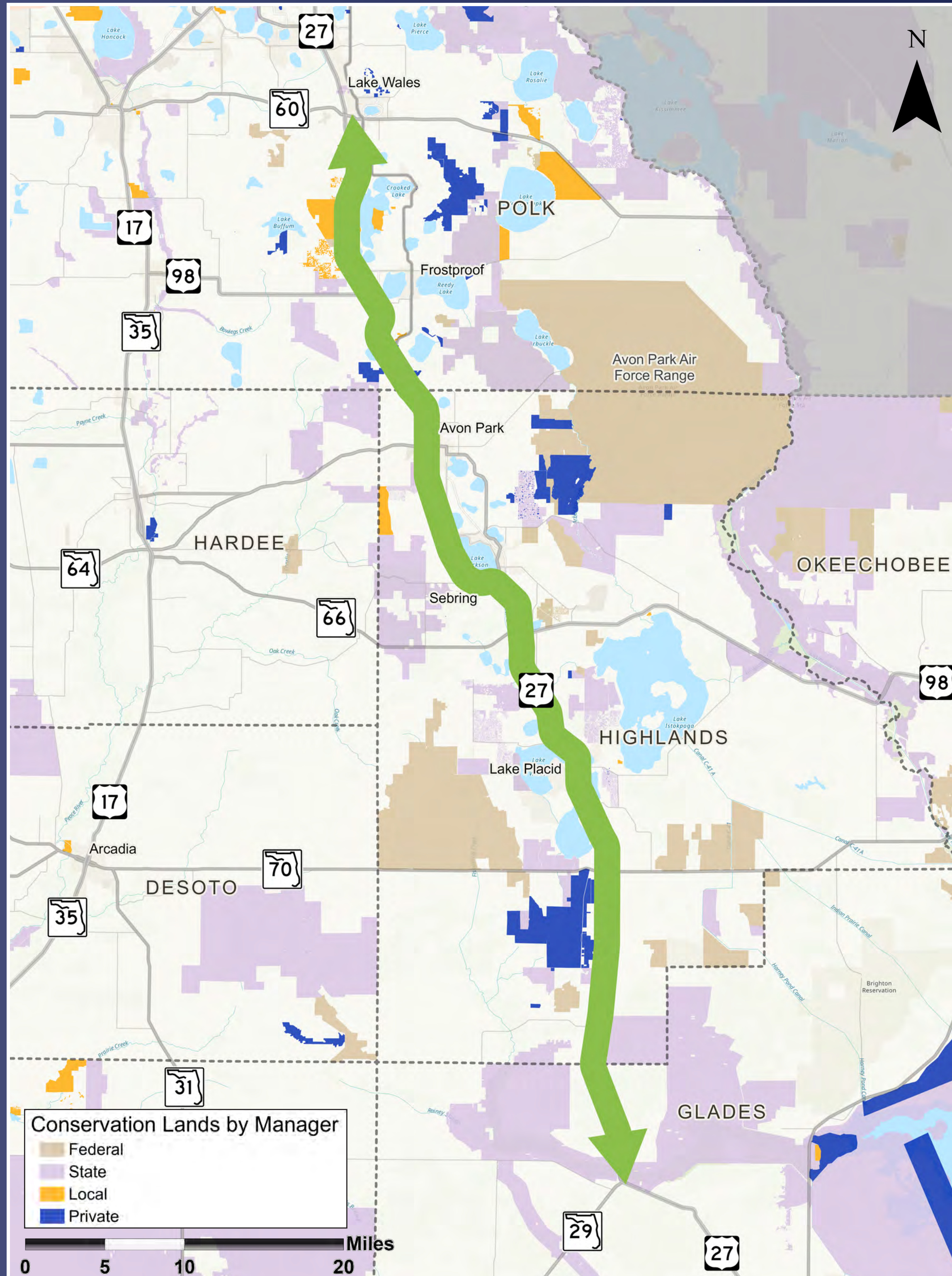


## TRAFFIC CONGESTION

Multiple segments of US 27 have more vehicles (up to 20% more) than can be accommodated.

# Feasibility Study Recommendation

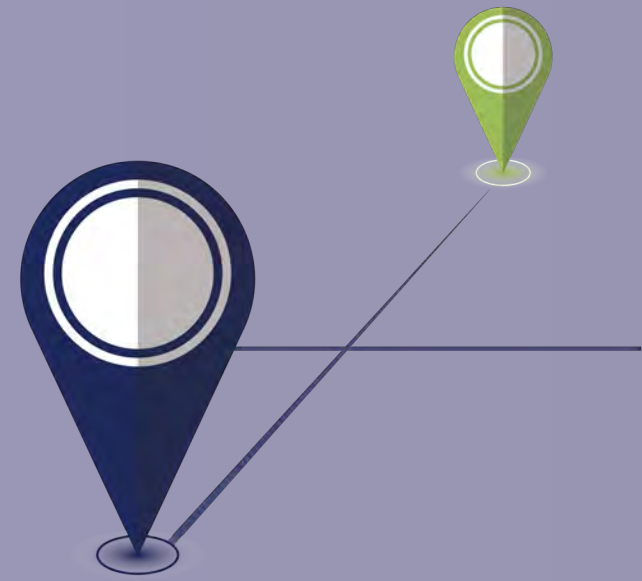
## Mobility Analysis



## Needs Driven

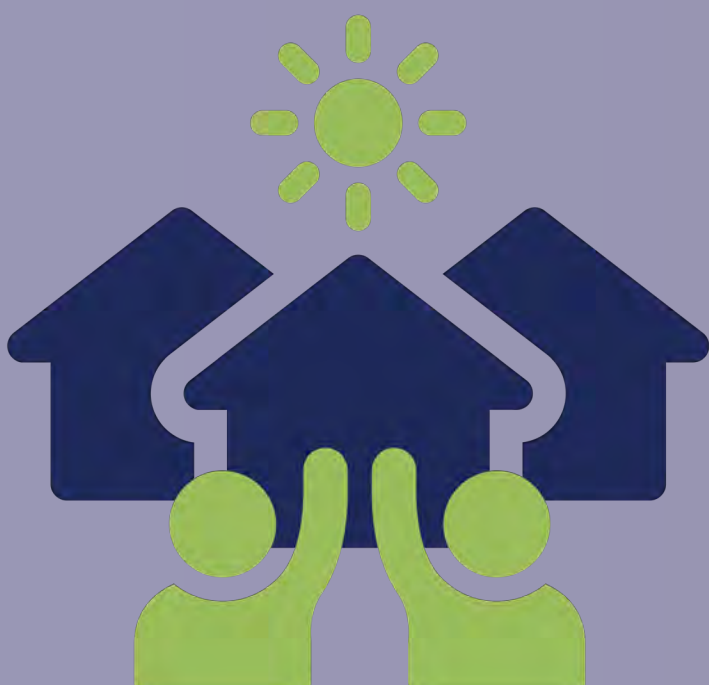
### OPERATIONAL IMPROVEMENTS ON US 27

- › Regional traffic, safety, resiliency, and freight analysis



### REGIONAL CONNECTIVITY

- › Identify potential operational/capacity needs
- › Enhance system linkage

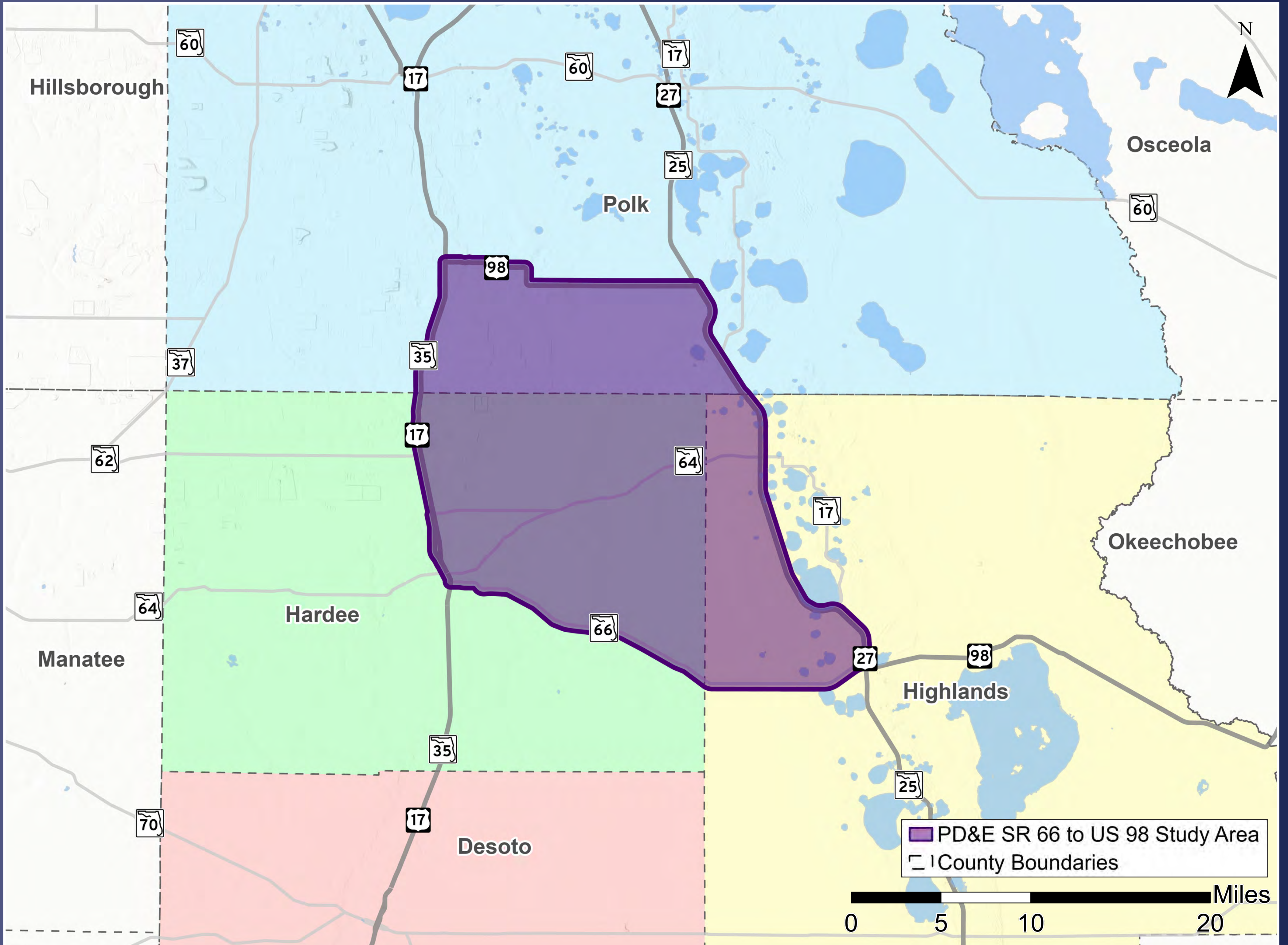


### FUTURE CHANGE IN CHARACTER

- › Align with community vision
- › Address the competing roadway demand between pedestrians, trucks, and cars

# Feasibility Study Recommendation

## PD&E Study from SR 66 to US 98



## Needs Driven

### LAND USE CHANGES

- › Urbanization competes with increased truck traffic
- › New commercial/residential developments



### TRAFFIC CONGESTION

- › Segments of US 27 operating at or near capacity by 2045
- › US 27 future capacity is not mitigated with additional lanes

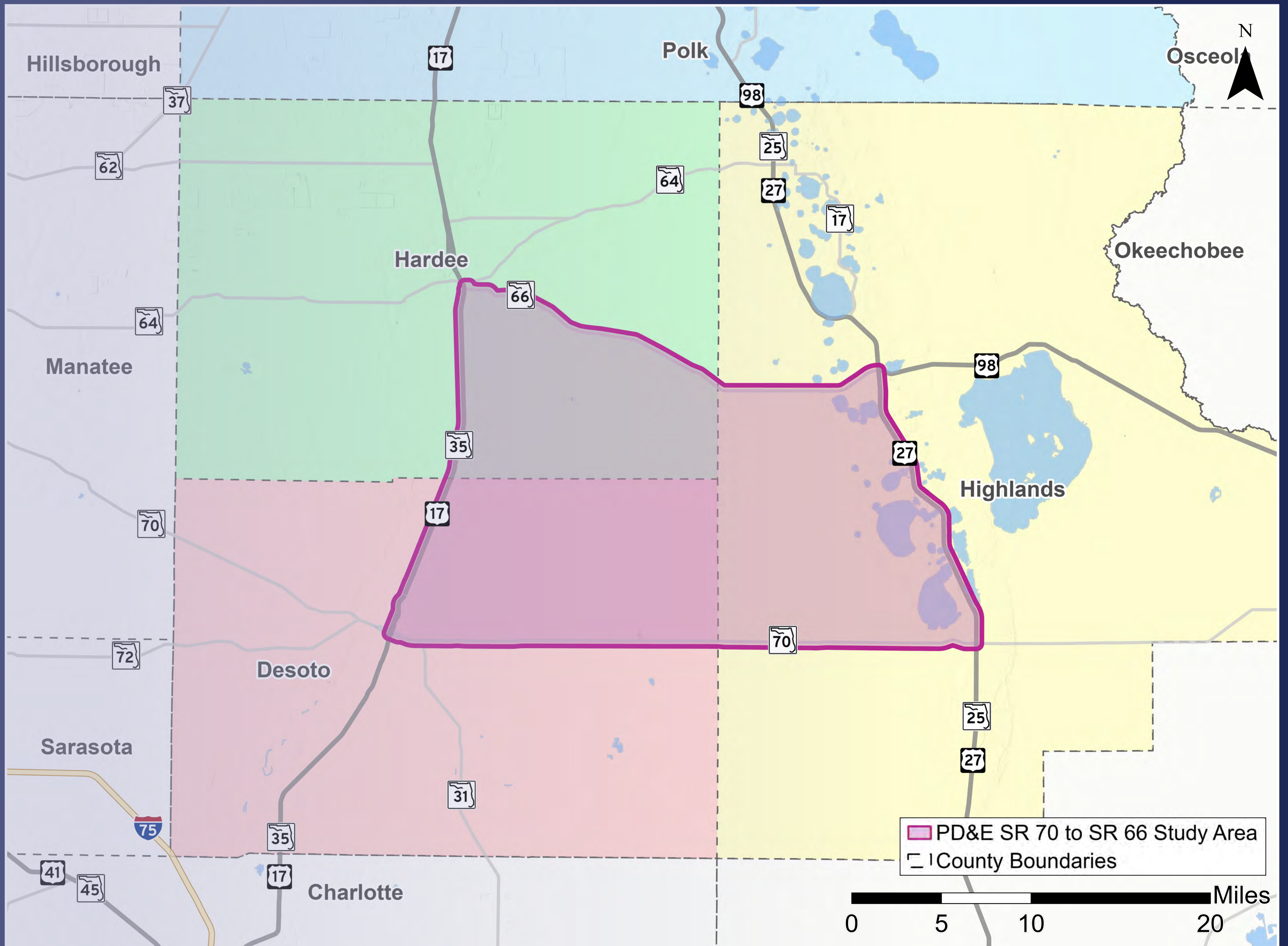


### SAFETY

- › The fatal crash percentage is more than twice the national average
- › 31% of pedestrian crashes were fatal compared with 8% statewide

# Feasibility Study Recommendation

## PD&E Study from SR 70 to SR 66



## Needs Driven

### NETWORK RESILIENCY



- > 56-mile detour if an incident occurs on US 27
- > Travel time increases from 20 minutes to an average of 60 minutes with US 27 closure



### EVACUATION

- > Limited north/south roadway alternatives in the region



### FREIGHT MOBILITY

- > Regional distribution roadway linking Intermodal Logistics Center (ILCs) - up to 30% trucks
- > Land use changes that continue to drive growth

# Title VI



The Florida Department of Transportation is required to comply with various non-discrimination laws and regulations, including Title VI of the Civil Rights Act of 1964 and related amendments.

- Public participation is solicited without regard to race, color, national origin, age, sex, religion, disability or family status.
- Persons wishing to express their concerns about Title VI may do so by contacting either:

---

## **DISTRICT ONE**

*Cynthia Sykes*

*District 1 Title VI Coordinator*

Florida Department of Transportation

801 N Broadway Ave, MS 1-40

Bartow, FL 33830

(863) 519-2287

Cynthia.Sykes@dot.state.fl.us

## **TALLAHASSEE OFFICE**

*Stefan Kulakowski, FCCM, CPM*

*State Title VI Coordinator*

Florida Department of Transportation

605 Suwanee Street, MS 65

Tallahassee, FL 32399-0450

(850) 414-4742

Stefan.Kulakowski@dot.state.fl.us



# Future Public Meetings



## PD&E SR 70 to SR 66 VISIONING WORKSHOP

In-Person • November 19, 2024

Turner Agri-Civic Center, 2250 NE Roan St, Arcadia, FL 34266

Virtual Self-Guided • November 20–December 4, 2024

## PD&E SR 66 to US 98 VISIONING WORKSHOP

In-Person / Virtual • Early 2025

Location and Dates: TBD

## Mobility Analysis VISIONING WORKSHOP

In-Person / Virtual • Spring 2025

Location and Dates: TBD

# Transportation Project Development Process

