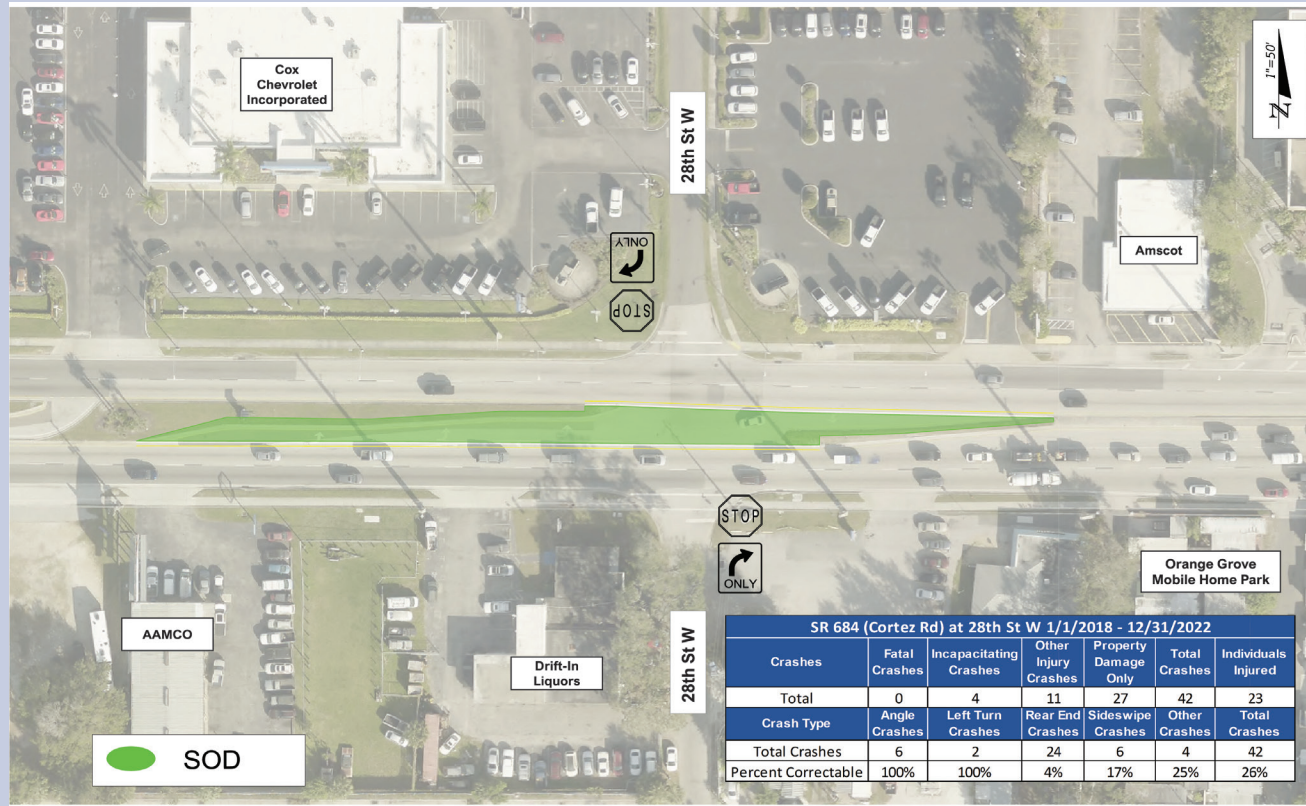


## Location 5



### WHY ARE WE DOING THIS PROJECT?

The proposed improvements presented are needed because a notable number of fatal and serious injury crashes have occurred at these locations. As a high volume, high speed, vital transportation roadway through Bradenton, it is imperative to improve the safety and traffic flow of this corridor.

### CONTACT US

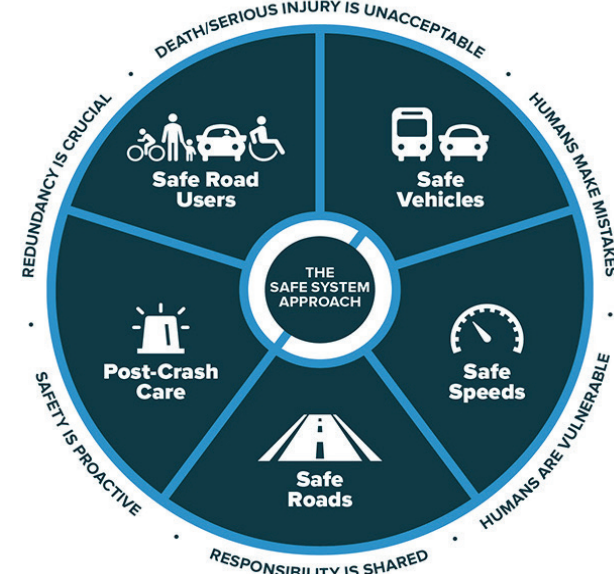
For more information about the improvements or to send in a meeting comment

before September 20, 2024, please contact:

Xiaoxue (Snow) Peng, PE  
 FDOT Project Manager  
 Florida Department of Transportation  
 (863) 519- 2528  
 Xiaoxue.peng@dot.state.fl.us

### JOIN US ON THE WEB

www.SWFLroads.com/project/449646-1  
 @MyFDOT SWFL  
 facebook.com/MyFDOTSWFL



Source: FHWA.

FDOT solicits public participation without regard to race, color, national origin, age, sex, religion, disability, or family status. Anyone who feels they have been discriminated against may complete one of the forms at the hearing tonight or contact: Cynthia Sykes, District One Title VI Coordinator, at (863) 519-2287 or email at Cynthia.Sykes@dot.state.fl.us.



## US 41 (14th Street West) and SR 684 (Cortez Road West) Safety Improvements

FPID 449646-1

**WELCOME**  
 Welcome to the US 41 and SR 684 Safety Improvements Public Meeting!

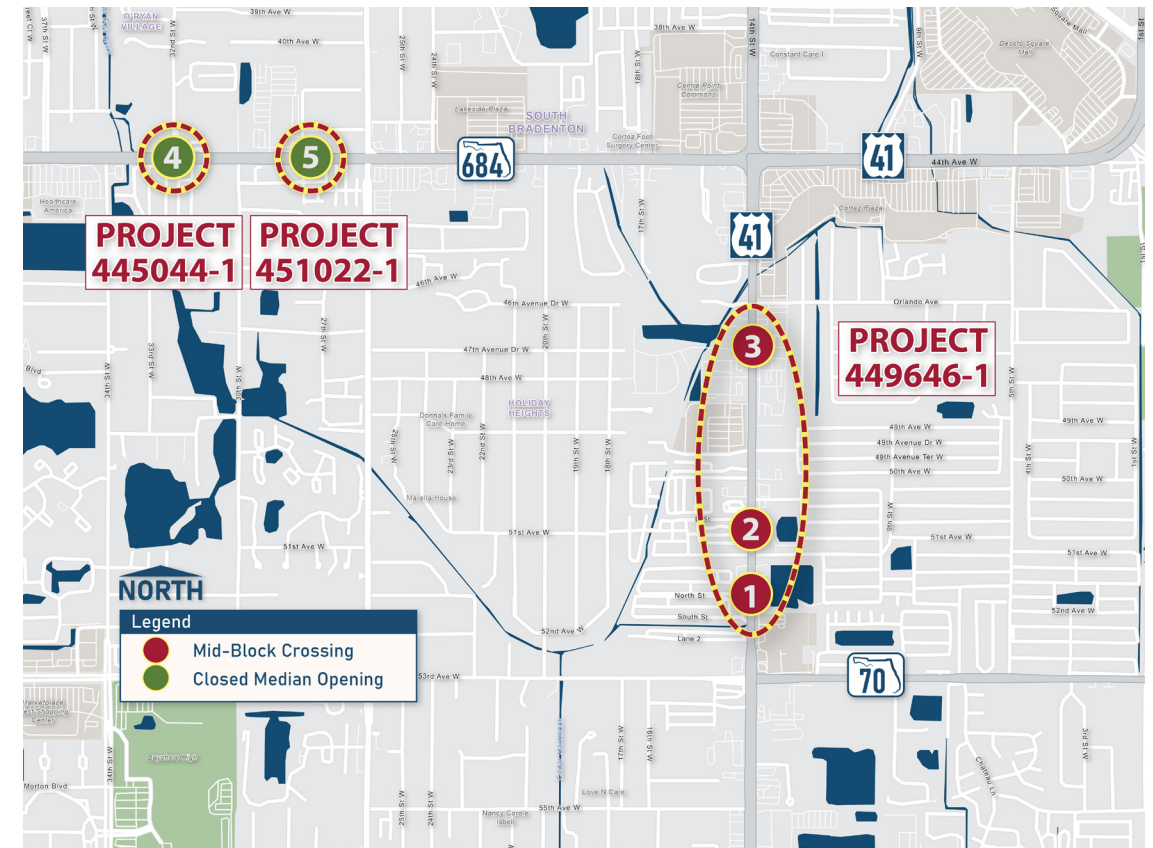
The meeting will provide information about the changes and offer the public the opportunity to express their views on the improvements.

### PROJECT INFORMATION

**Project 449646-1:**  
 Installing 3 mid-block crossings with Pedestrian Hybrid Beacons on US 41  
 Anticipated begin Construction in 2028  
 The estimated construction cost is \$ 4.17 Million

**Project 445044-1**  
 Median Closure on SR 684 (Cortez Rd. W) at 32nd Street W.  
 Anticipated begin Construction in 2026  
 The estimated construction cost is TBD

**Project 451022-1**  
 Median Closure on SR 684 (Cortez Rd. W) at 28th Street W.  
 Anticipated begin Construction TBD  
 The estimated construction cost is TBD



### Pedestrian Hybrid Beacon (PHB)

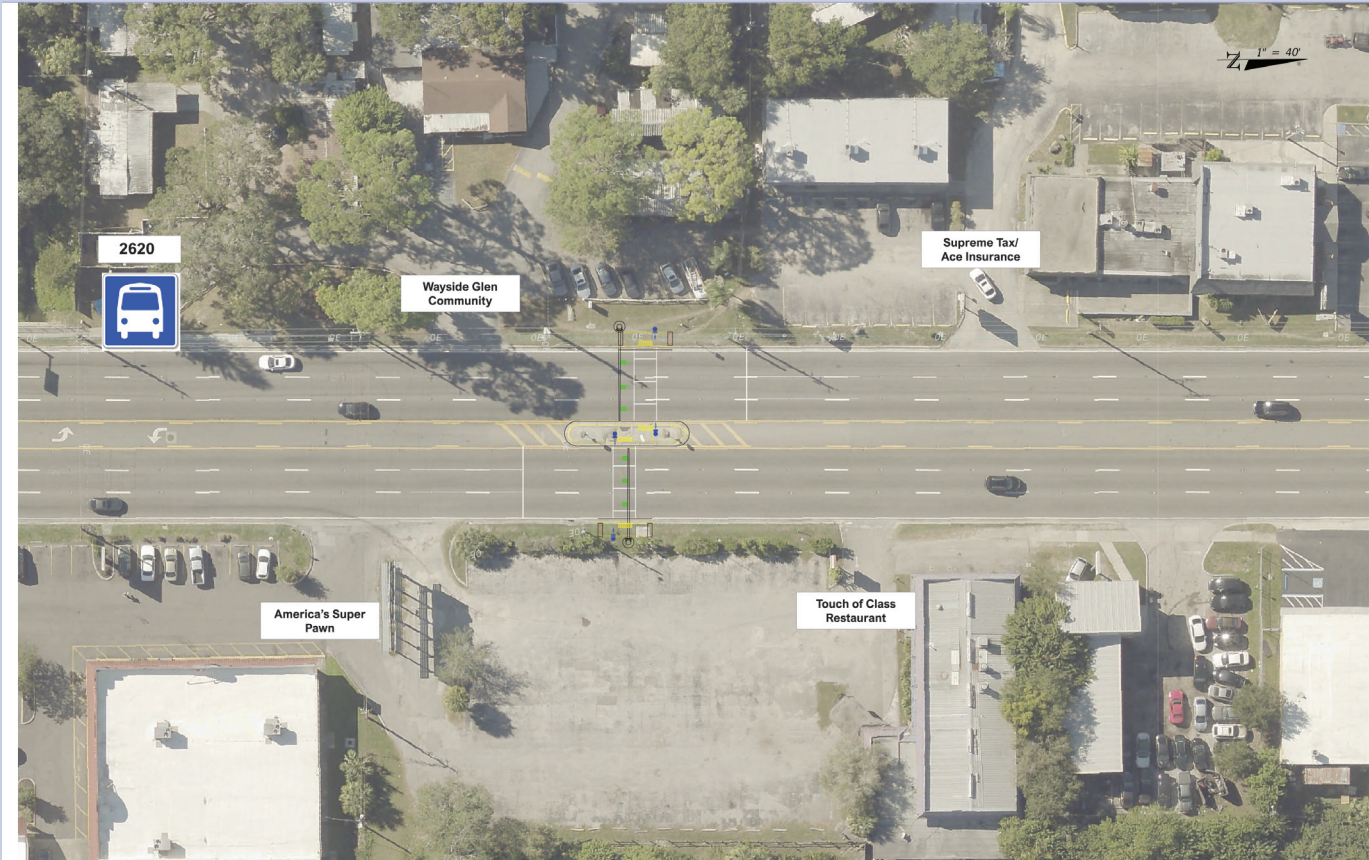
**SAFE TRANSPORTATION FOR EVERY PEDESTRIAN**  
 COUNTERMEASURE TECH SHEET

- High speeds and multiple lanes of traffic create challenges for pedestrians crossing at unsignalized locations.
- PHBs can warn and control traffic at unsignalized locations and assist pedestrians in crossing a street or highway at a marked crosswalk.
- PHBs can reduce pedestrian crashes by **55%**



PROPOSED IMPROVEMENTS

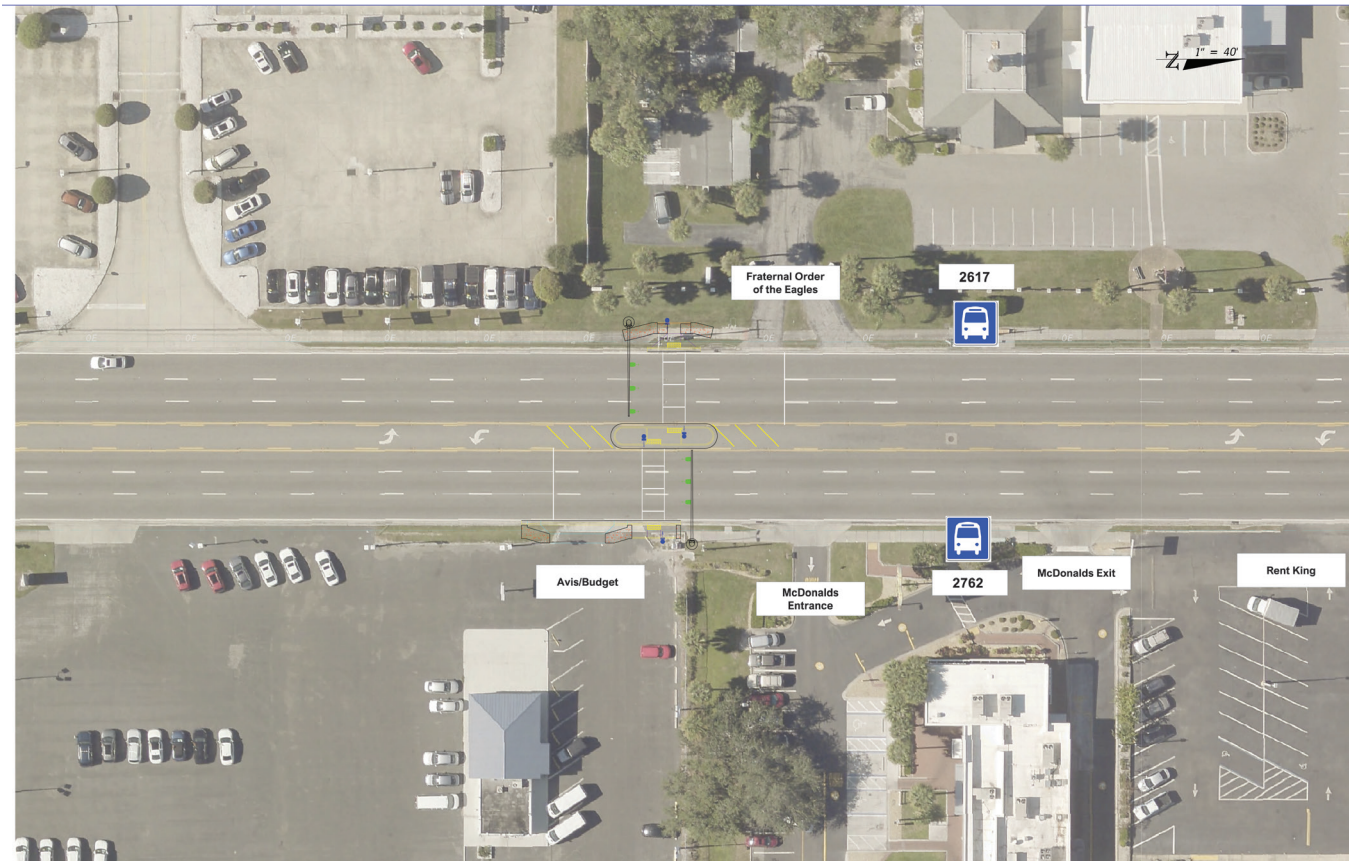
Location 1



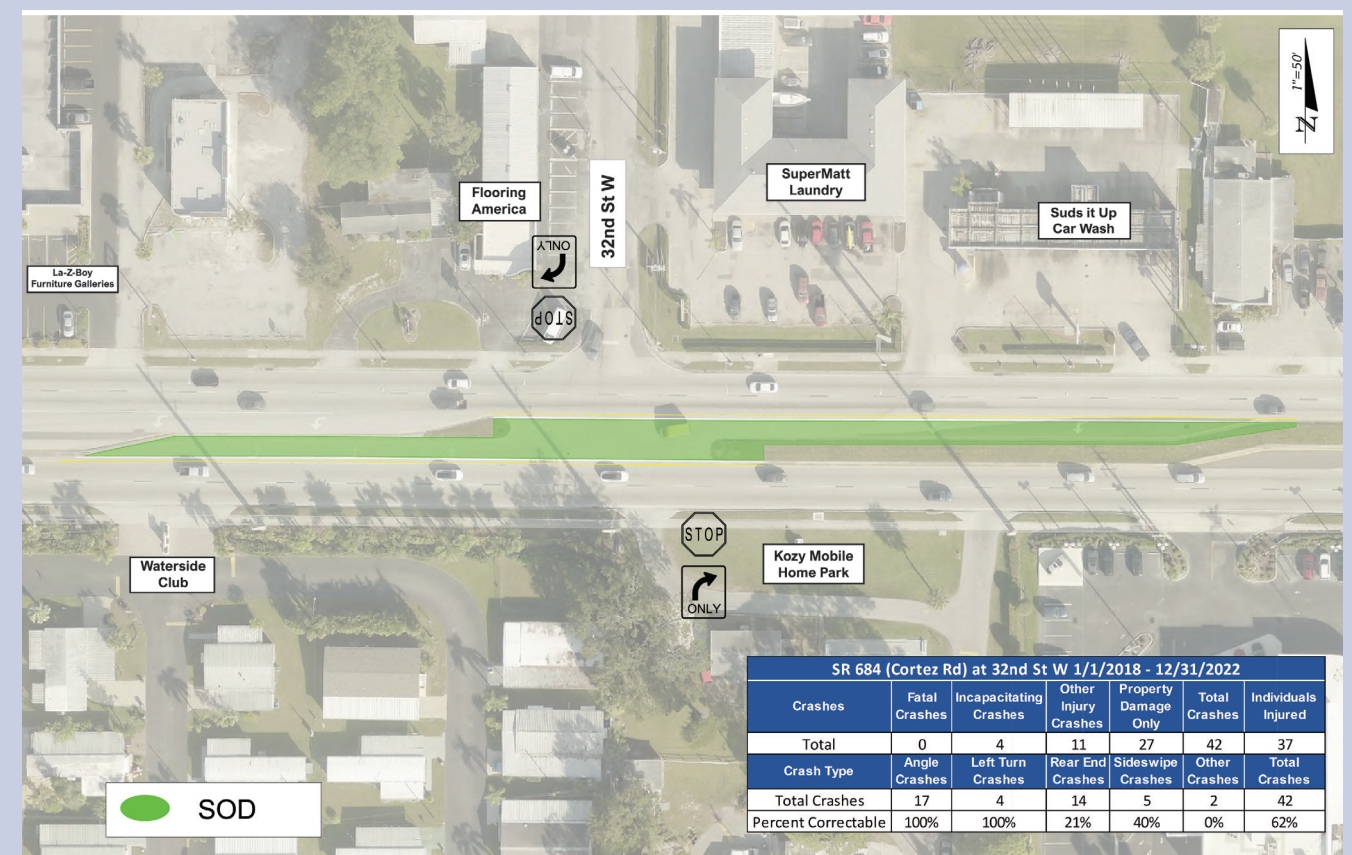
Location 2



Location 3



Location 4



SR 684 (Cortez Rd) at 32nd St W 1/1/2018 - 12/31/2022						
Crashes	Fatal Crashes	Incapacitating Crashes	Other Injury Crashes	Property Damage Only	Total Crashes	Individuals Injured
Total	0	4	11	27	42	37
Crash Type	Angle Crashes	Left Turn Crashes	Rear End Crashes	Sideswipe Crashes	Other Crashes	Total Crashes
Total Crashes	17	4	14	5	2	42
Percent Correctable	100%	100%	21%	40%	0%	62%