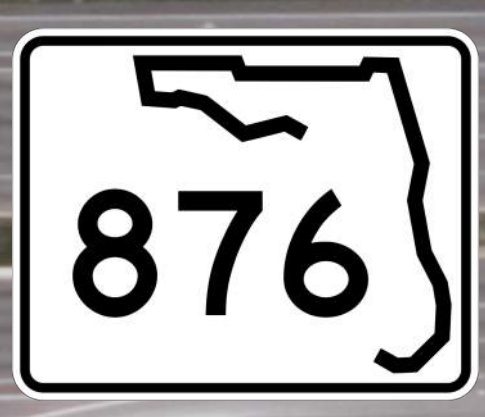


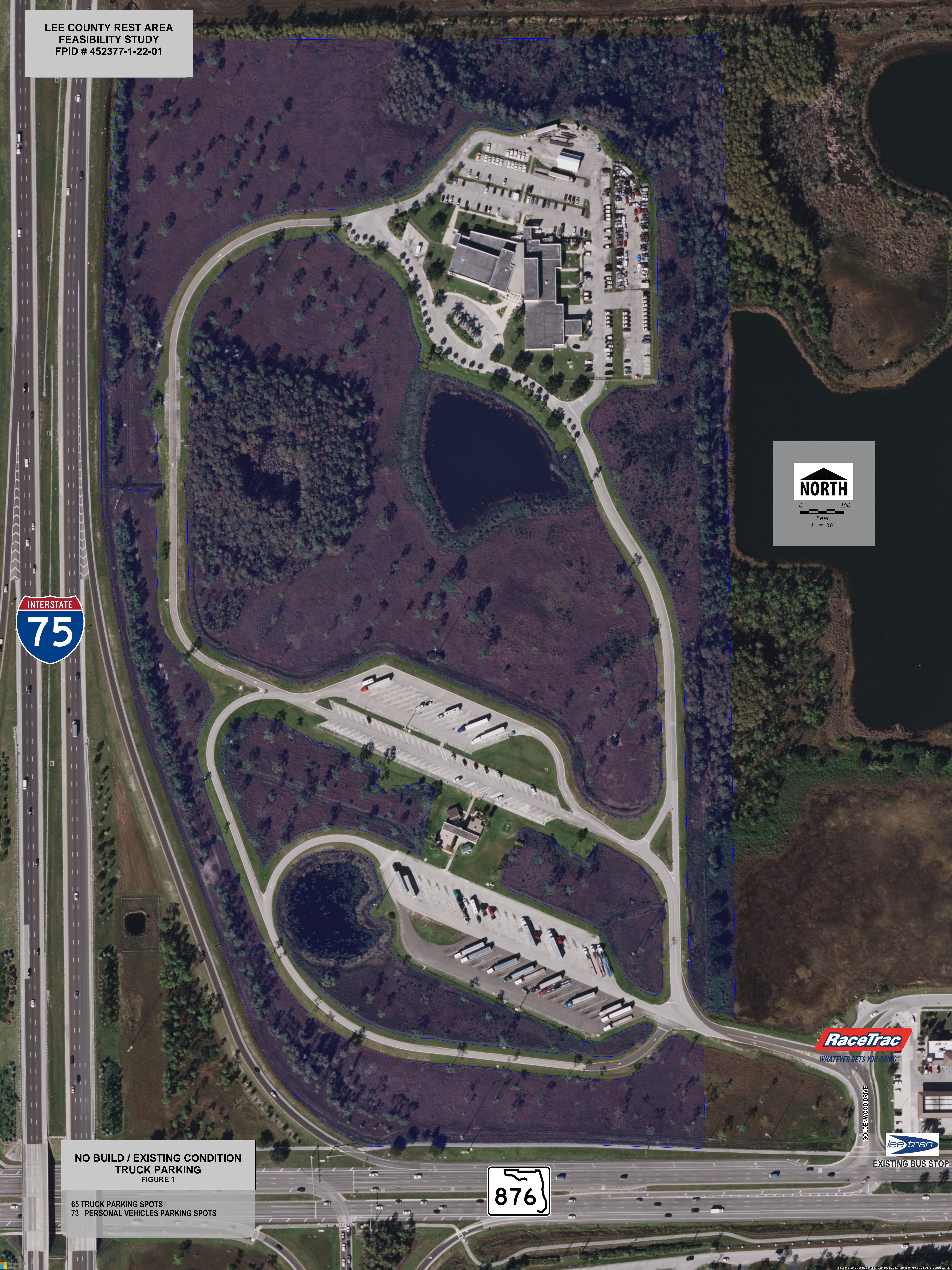
EXISTING BUS STOP

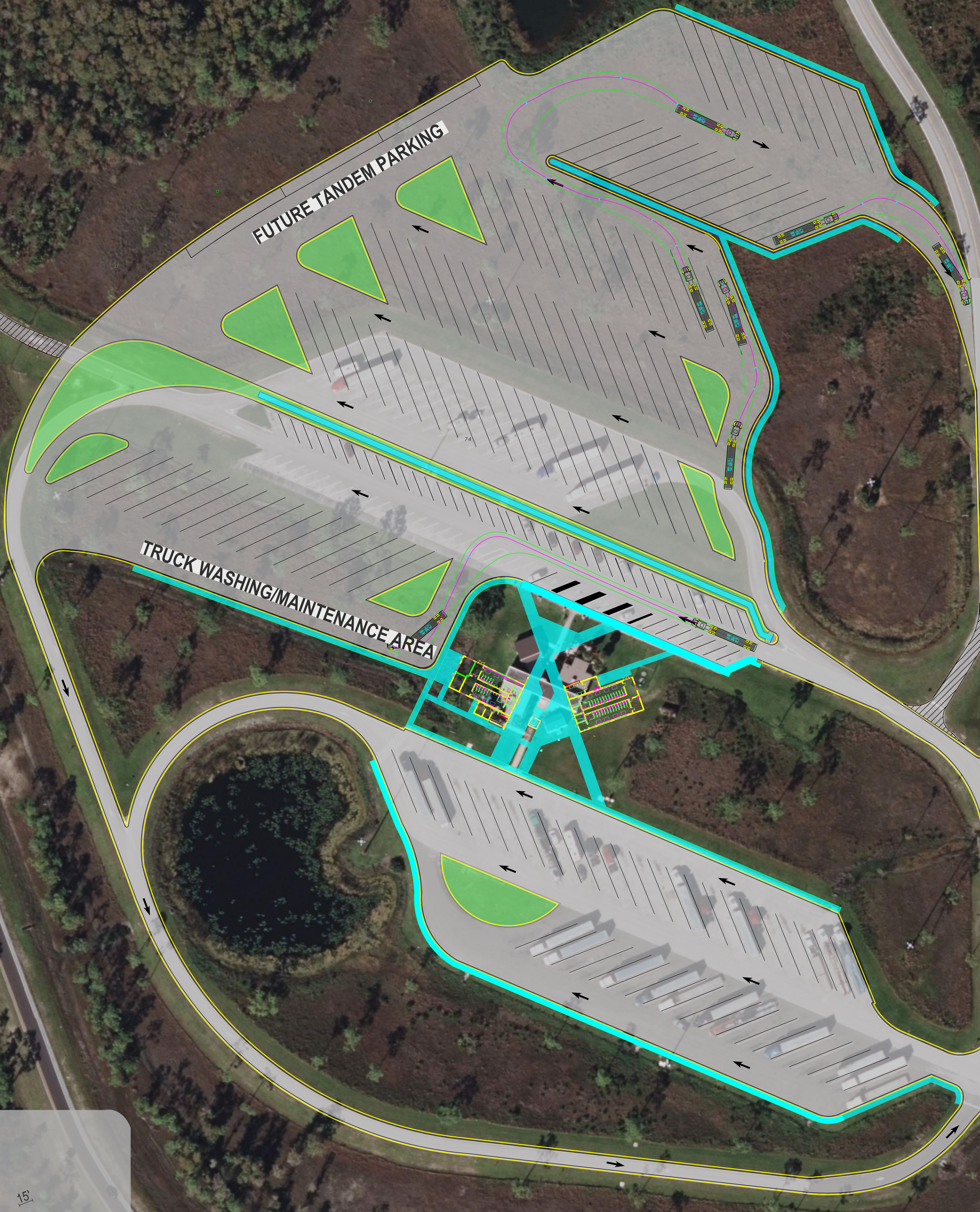
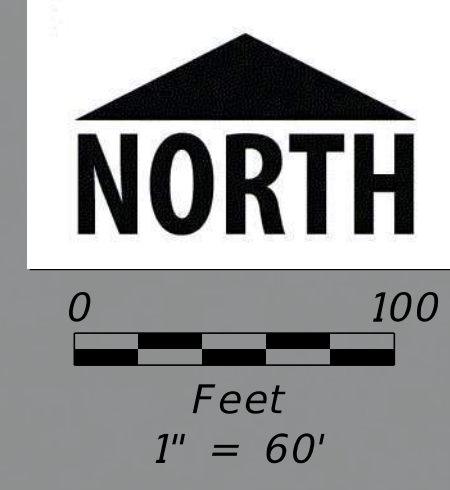
GOLDENWOOD DRIVE



**NO BUILD / EXISTING CONDITION**  
**TRUCK PARKING**  
FIGURE 1

65 TRUCK PARKING SPOTS  
73 PERSONAL VEHICLES PARKING SPOTS



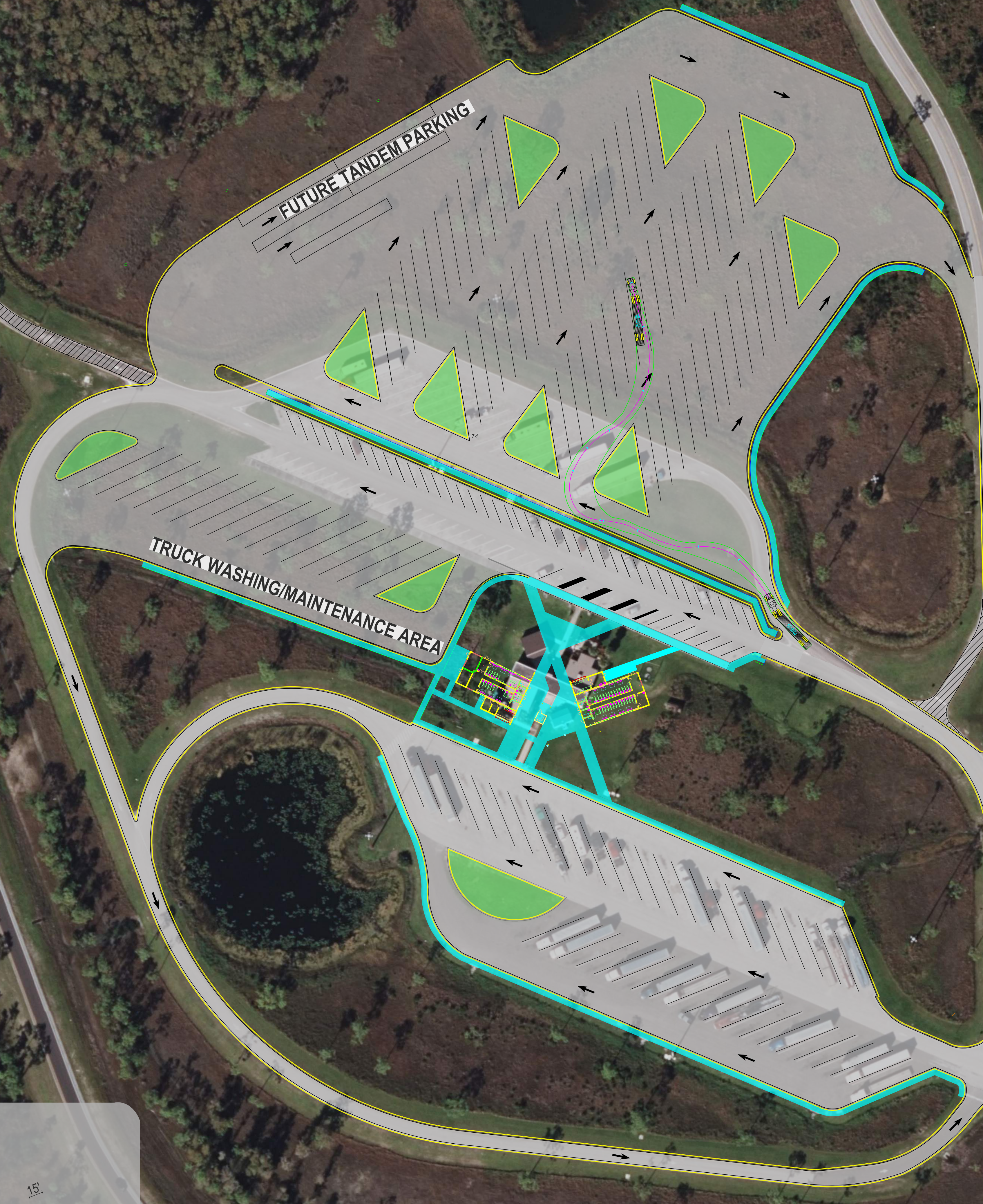
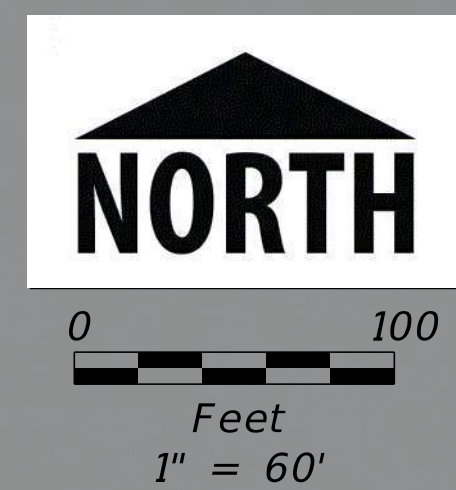


EXISTING BUS STOP

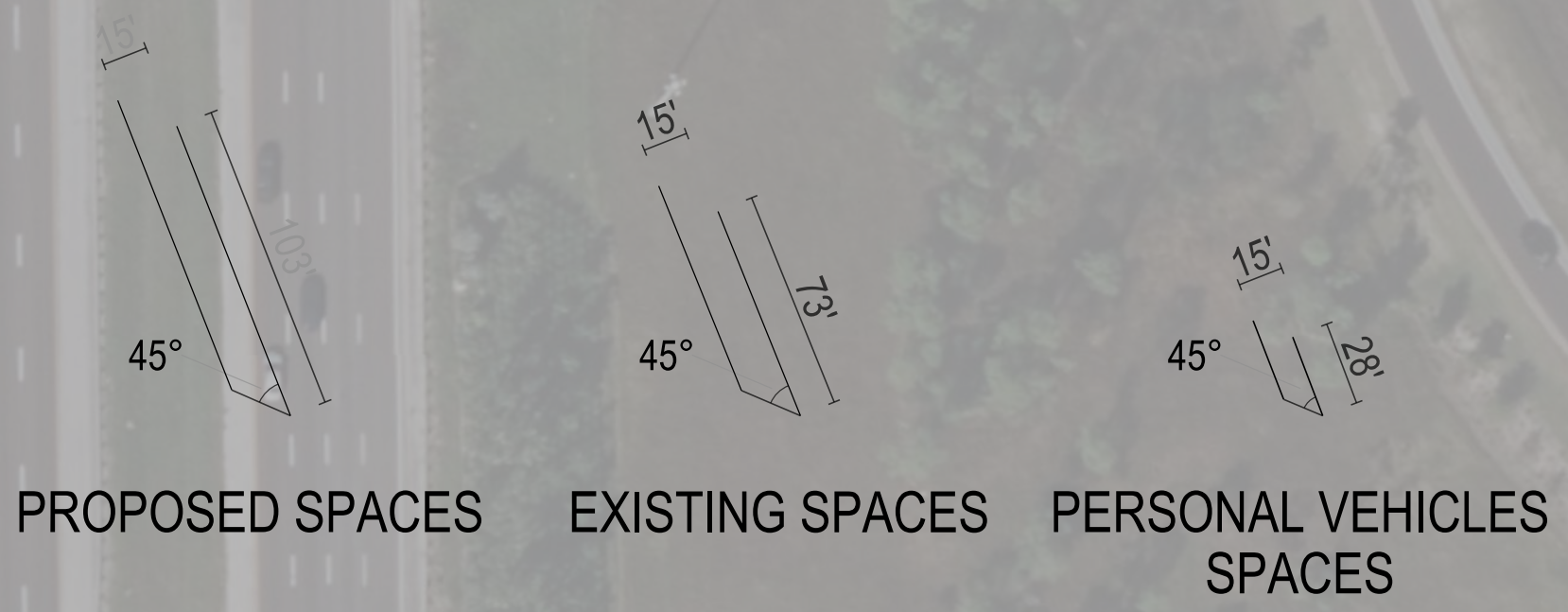


**ALTERNATIVE #1 - HYBRID-FLOW TRUCK PARKING**  
 FIGURE 1

- GRASS ISLAND
- SIDEWALK
- PAVEMENT TO BE REMOVED
- 139 TRUCK PARKING SPOTS
- 51 PERSONAL VEHICLES PARKING SPOTS

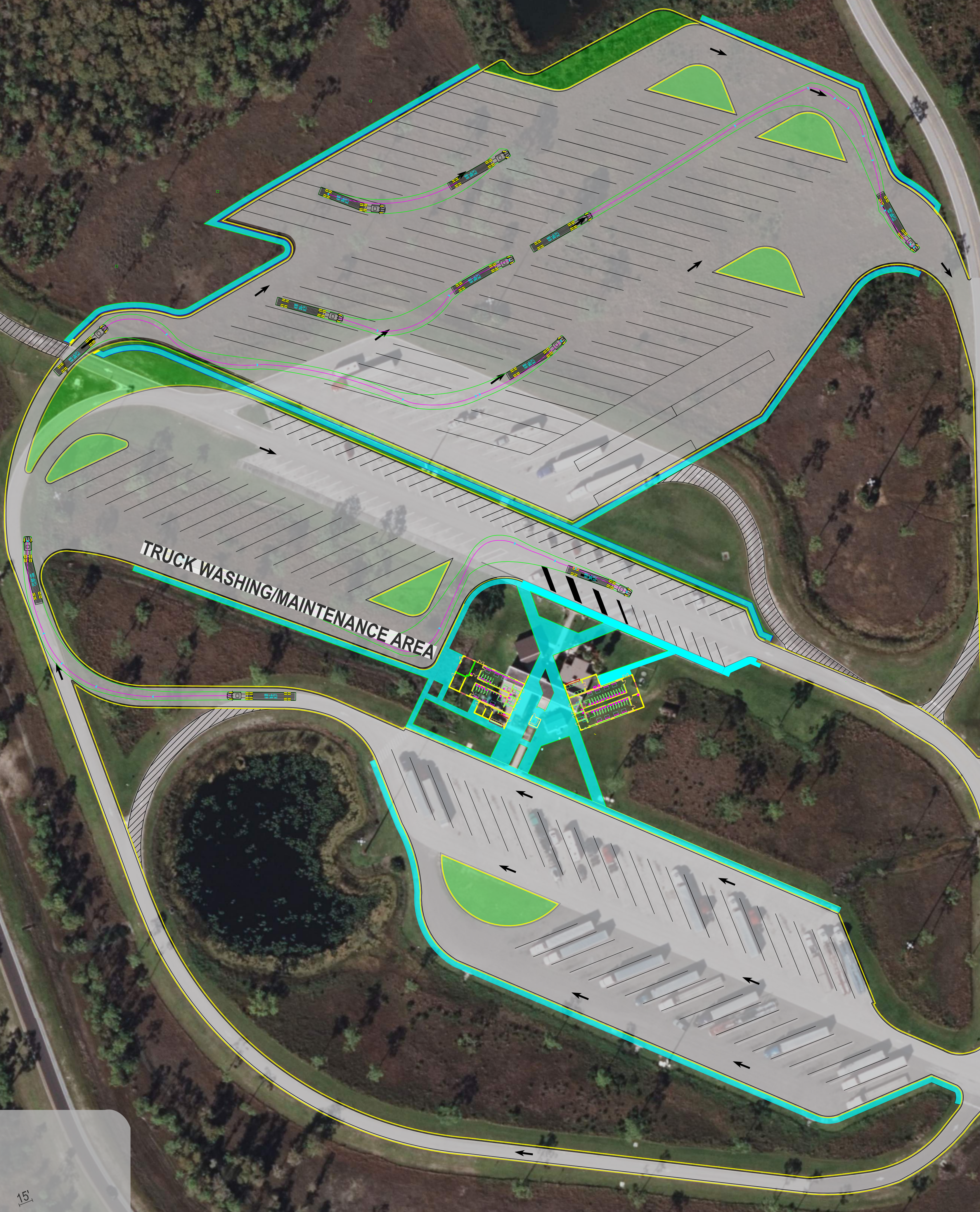
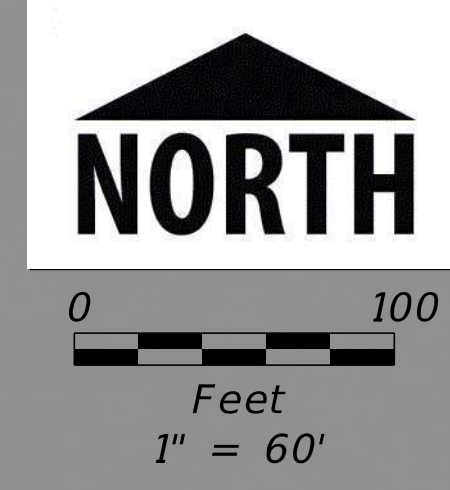


EXISTING BUS STOP



**ALTERNATIVE #2 - NORMAL-FLOW TRUCK PARKING**  
 FIGURE 1

- GRASS ISLAND
- SIDEWALK
- PAVEMENT TO BE REMOVED
- 121 TRUCK PARKING SPOTS
- 51 PERSONAL VEHICLES PARKING SPOTS



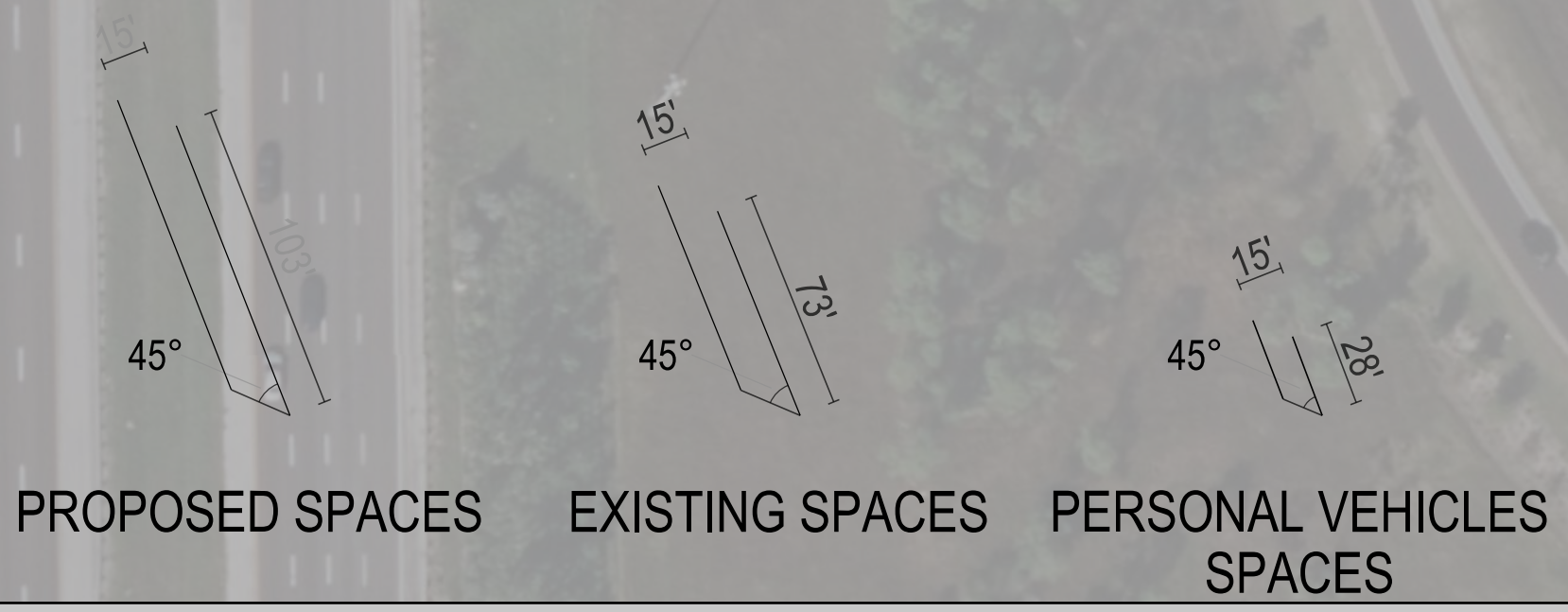
INTERSECTION GEOMETRY TO BE MODIFIED



GOLDENWOOD DRIVE



EXISTING BUS STOP



**ALTERNATIVE #3 - CLOCKWISE  
 FLOW TRUCK PARKING**  
 FIGURE 1

- GRASS ISLAND
- SIDEWALK
- PAVEMENT TO BE REMOVED
- 143 TRUCK PARKING SPOTS
- 48 PERSONAL VEHICLES PARKING SPOTS