



# I-75 Lee County Rest Area Expansion Feasibility Study

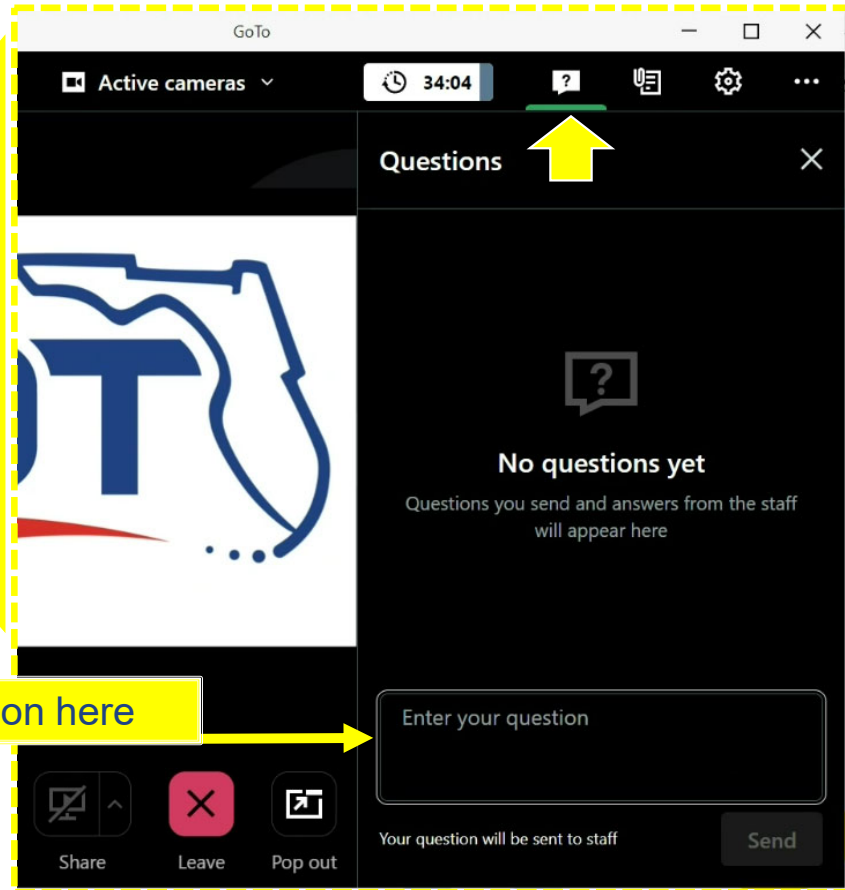
Virtual Public Meeting  
FPID 452377-1

February 25, 2025





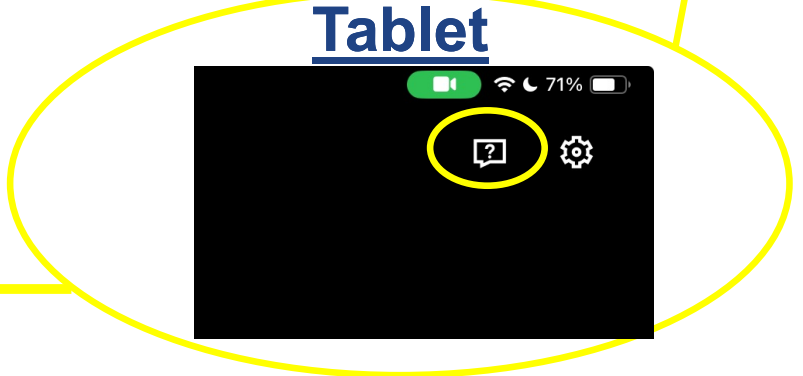
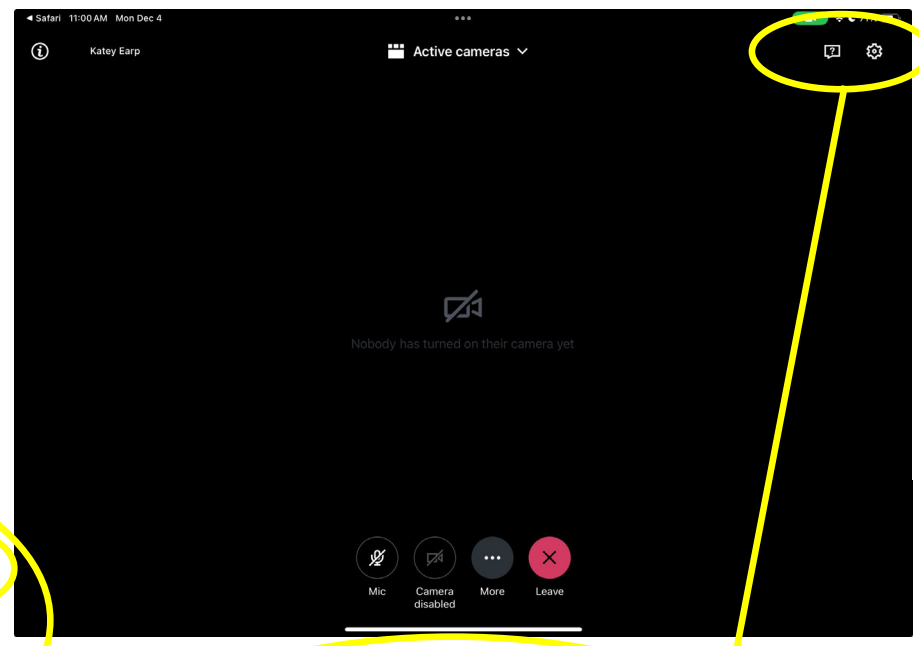
Type question here



# CONTROL PANEL – Mobile/Tablet



Type question here



For technical issues, visit GoToWebinar online at:

[Support.goto.com](https://support.goto.com)

Or through your confirmation email, click on check system requirements (below):

### How to join the webinar

Tue, Aug 27, 2024 5:00 PM - 6:00 PM EDT

**Add to calendar** [Outlook® Calendar](#) | [Google Calendar™](#) | [iCal®](#)

**1. Click the button to join the webinar at the specified time and date:**

[Join Webinar](#)

Note: This link should not be shared with others; it is unique to you.

Before joining, be sure to [check system requirements](#) to avoid any connection issues.

## Slide 4

---

**SG0**    [@Bledsoe, Kaylee] - can you check this screenshot and make sure that it still looks the same?  
Gale, Siobhan, 2024-08-02T14:55:48.447

**BK0 0**   [@Gale, Siobhan] The only change to the recent GoTo invites would be the use of the word 'Button' instead of 'Link'  
Bledsoe, Kaylee, 2024-08-02T15:07:27.722

# OPENING STATEMENT & INTRODUCTIONS



**Adam Rose**  
FDOT  
Project Manager



**Lee Dowden**  
WGI  
Consultant Project Manager



**Linda Hess**  
WGI  
Crash/Traffic Analysis



**Brianna Smith**  
CMA Outreach  
Public Involvement



**Andy Nicols**  
Transystems  
Truck Parking/Site Layout



**Matt Steen**  
Transystems  
Truck Parking/Site Layout



**Lyndsey Duty**  
WGI  
Environmental Analysis



**Greg Griffith**  
WGI  
Environmental Analysis

# Purpose and Need

Will be updated based on stakeholder outreach and finalized in the final feasibility study

## Purpose:

- Provide additional truck parking for I-75 (SIS facility)
- Improve multimodal facilities and safety

## Need:

- Increase the number of Truck Parking Spaces
- Provide improved rest room facilities and amenities
- Enhance safety conditions by providing a secure rest area for drivers and pedestrian
- Area-wide network/system linkage

**Provide additional truck parking**

to reduce congestion and lower emissions

**Provide sidewalk connectivity**

to LeeTran bus stop and Daniels Parkway sidewalk

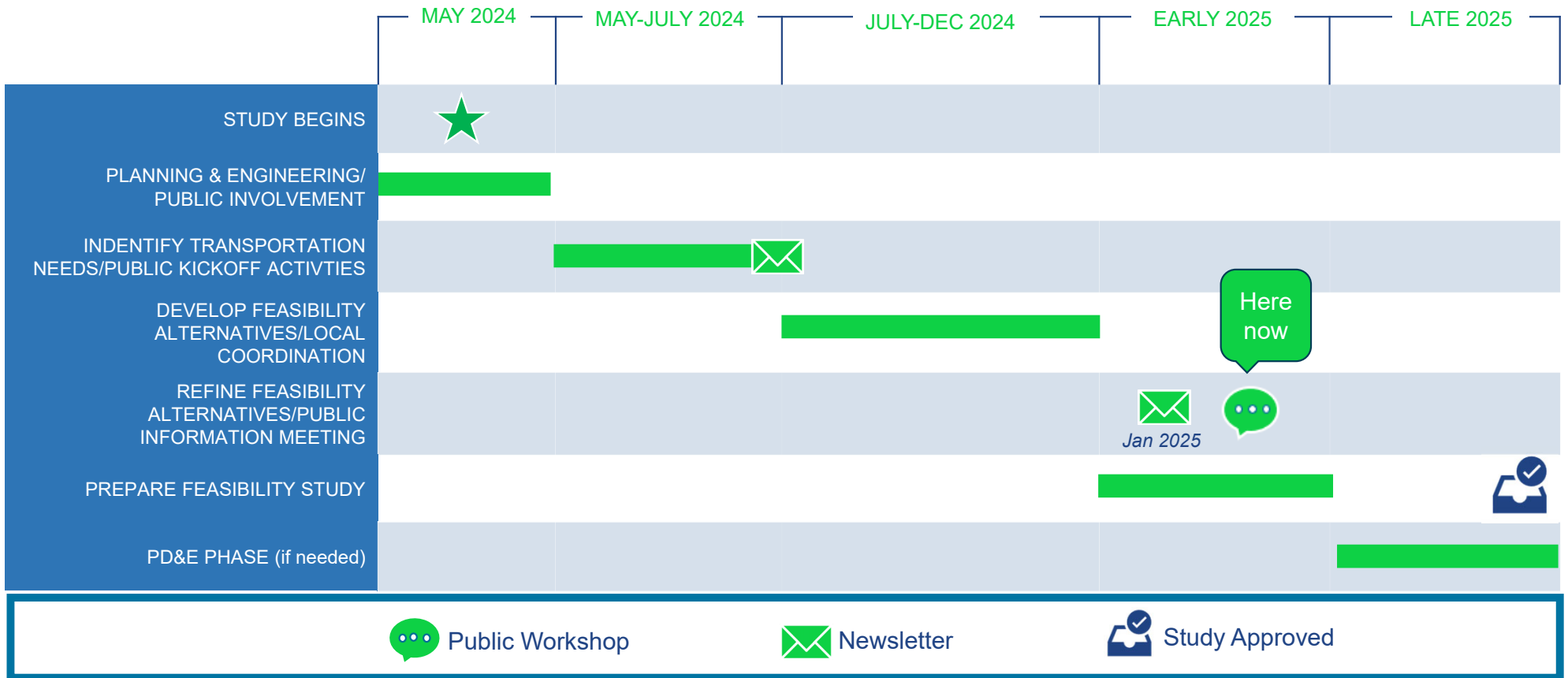
**Implement Green Building Rating System criteria**

facilitates construction with reduced carbon footprint



Lee County Rest Area Building

# FPID 452377-1-22-01: Feasibility Study Schedule



 Public Workshop

 Newsletter

 Study Approved



# Possible Site Improvements



## Safety

- Full camera coverage
- Lighting
- Security office
- Close site during construction
- Sidewalk connectivity
- CPTED policies for landscaping



## Long-Term Cost-Effective/ Savings Ideas

- Phased construction approach
- Building Upgrades
- Repurpose existing pavement for car parking
- LED lighting
- Future proofing the site
- Hardened precast building principals

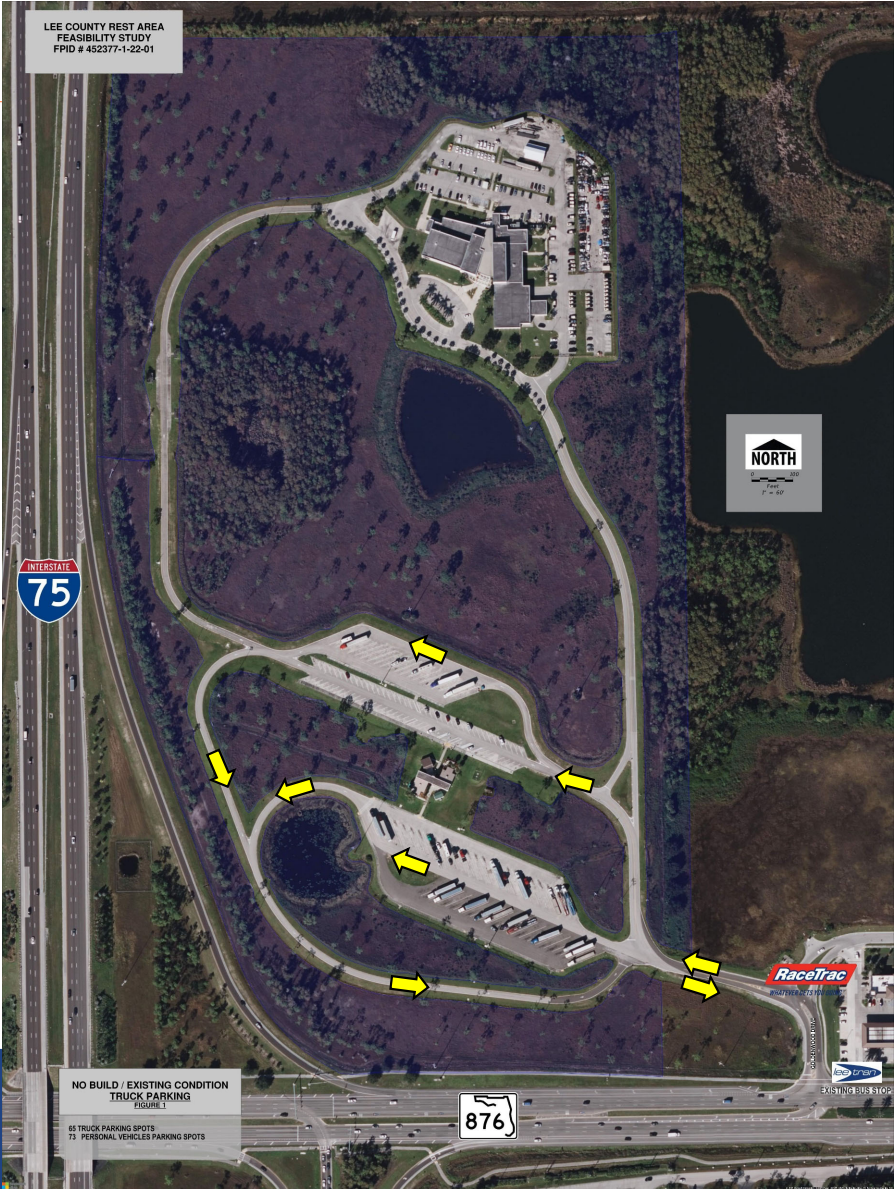


## Innovations

- Ingress/ egress solutions
- Use lidar data

# No Build Alternative

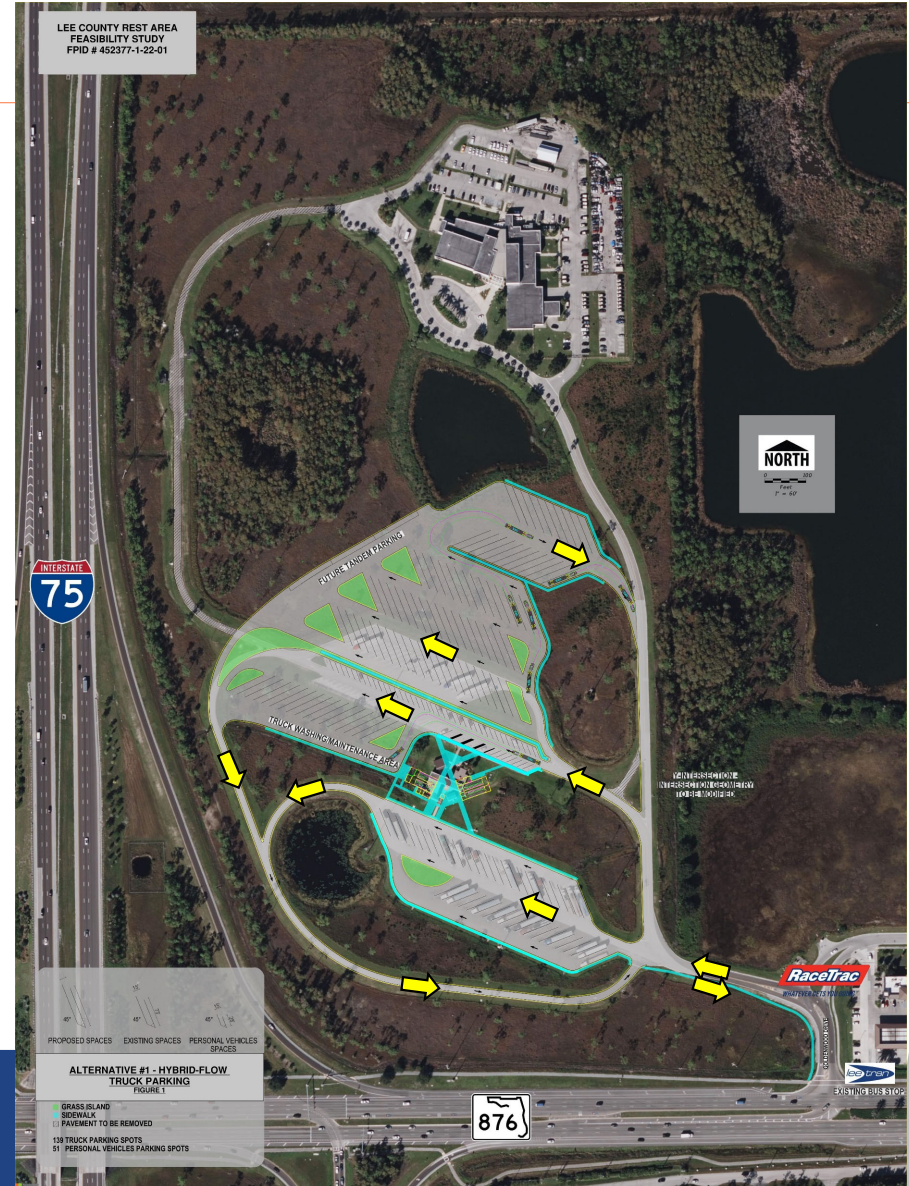
# of Parking Spaces	No Build
Trucks	43
Personal Vehicles	75



# Alternative #1

## Hybrid Flow

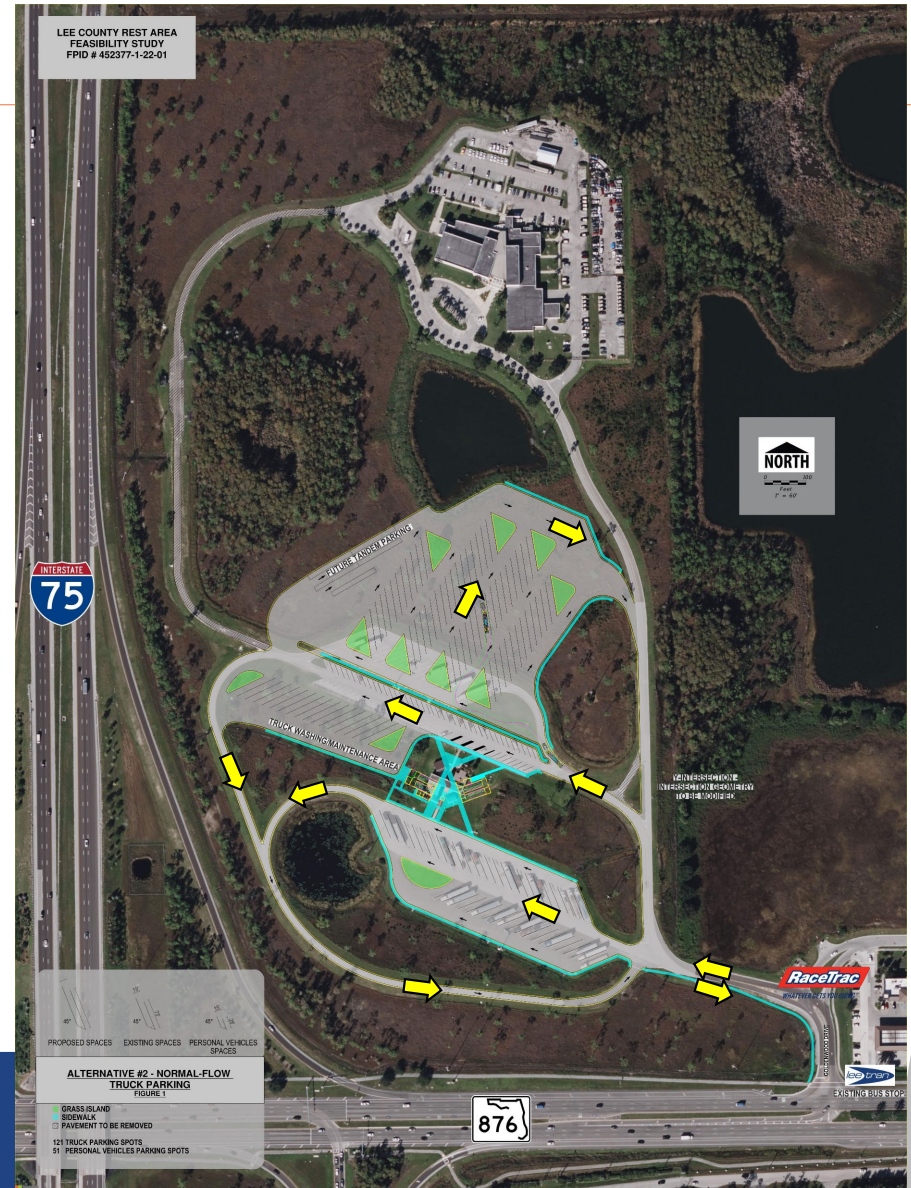
# of Parking Spaces	Hybrid Flow
Trucks	139
Personal Vehicles	51



# Alternative #2

## Normal Flow

# of Parking Spaces	Normal Flow
Trucks	121
Personal Vehicles	51



# Alternative #3

## Clockwise Flow

# of Parking Spaces	Clockwise Flow
Trucks	143
Personal Vehicles	48



# Feasibility Study – Evaluation Matrix

Lee County Rest Area Feasibility Study					
Financial Project Identification Number: 452377-1-22-01					
LEGEND		X = No	✓ = Yes		
ALTERNATIVES EVALUATION MATRIX					
EVALUATION CRITERIA		ALTERNATIVE #			
		No Build	Alternative # 1 Hybrid Flow	Alternative # 2 Normal Flow	Alternative # 3 Clockwise Flow
Description	Traffic Pattern	Counter-Clockwise	Counter-Clockwise	Counter-Clockwise	Clockwise
	Truck Parking Options	Maintains the existing Facility as-is	Provides both "Pull-Thru" and Back-In"	Provides both "Pull-Thru" and Back-In"	Provides both "Pull-Thru" and Back-In"
<b>Purpose &amp; Need</b>					
Improves Safety Condition		X	✓	✓	✓
Increases Truck Parking		X	✓	✓	✓
Improves Modal Relationships		X	✓	✓	✓
<b># of Parking Spaces</b>					
Truck		43	139	121	143
Personal Vehicle		75	51	51	48
<b>Sociocultural Resources</b>					
Provides multimodal mobility and accessibility		✓	✓	✓	✓
Archeological & Historic Sites		X	X	X	X
<b>Utilities</b>					
Cost effective utility connections		✓	✓	✓	✓
<b>Right Of Way</b>					
Requires Additional Right of Way		X	X	X	X
Preliminary Analysis - Subject to Change					

Lee County Rest Area Feasibility Study					
Financial Project Identification Number: 452377-1-22-01					
LEGEND		X = No	✓ = Yes		
ALTERNATIVES EVALUATION MATRIX					
EVALUATION CRITERIA		ALTERNATIVE #			
		No Build	Alternative # 1 Hybrid Flow	Alternative # 2 Normal Flow	Alternative # 3 Clockwise Flow
Description	Traffic Pattern	Counter-Clockwise	Counter-Clockwise	Counter-Clockwise	Clockwise
	Truck Parking Options	Maintains the existing Facility as-is	Provides both "Pull-Thru" and Back-In"	Provides both "Pull-Thru" and Back-In"	Provides both "Pull-Thru" and Back-In"
<b>Drainage and Wetlands</b>					
Impacted Wetlands (acres) (includes secondary impacts)		0	6.2	6.6	6.4
Potential impacts to existing drainage infrastructure		X	Minor	Minor	Minor
Threatened & Endangered Species		X	X	X	X
Connection to Daniels Parkway sidewalks		X	✓	✓	✓
Connection to existing Daniels Parkway bus stop		X	✓	✓	✓
<b>Enhanced Amenities</b>					
Expanded Rest Room Facilities		X	✓	✓	✓
Dog Walk / Park		✓	✓	✓	✓
Picnic Shelters		✓	✓	✓	✓
Children's Recreational Area		X	✓	✓	✓
Walking Trail		X	✓	✓	✓
Lake View areas		✓	✓	✓	✓
Informational placards		✓	✓	✓	✓
Truck Washing / Maintenance Area		X	✓	✓	✓
<b>Estimated Costs</b>					
Wetland Mitigation		\$0	\$500,000	\$500,000	\$500,000
Right of Way		\$0	\$0	\$0	\$0
Design		\$0	\$3,500,000	\$3,500,000	\$3,500,000
Construction (includes cost of building)		\$0	\$37,000,000	\$37,000,000	\$37,000,000
Construction Engineering & Inspection		\$0	\$2,960,000	\$2,960,000	\$2,960,000
<b>Preliminary Estimate of Total Project Costs</b>		<b>\$0</b>	<b>\$43,960,000</b>	<b>\$43,960,000</b>	<b>\$43,960,000</b>
Preliminary Analysis - Subject to Change					

# Examining Various Feasible Alternatives



How can we solve the problem?



Do we understand the problem?



What happens if we do nothing?



Can the problem be solved?



Is the solution acceptable?

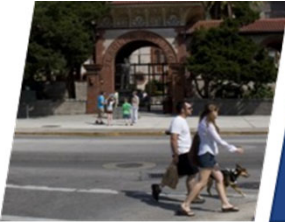


How do we avoid and minimize impacts?



What is the best solution?

Public Engagement and Stakeholder Discussions



# Safety, Questions, and Contact Information

**Adam Rose**

Project Manager  
FDOT District One

[Adam.Rose@dot.state.fl.us](mailto:Adam.Rose@dot.state.fl.us)



Lane departures represent  
**34%** of all  
**CRASHES**  
yet result in  
**42%** of all  
**DEATHS**







**Thank you for  
attending!**

*The presentation will  
begin again shortly.*

