



SR 29

**Purpose & Need Scoping
Public Meeting**

October 18, 2007

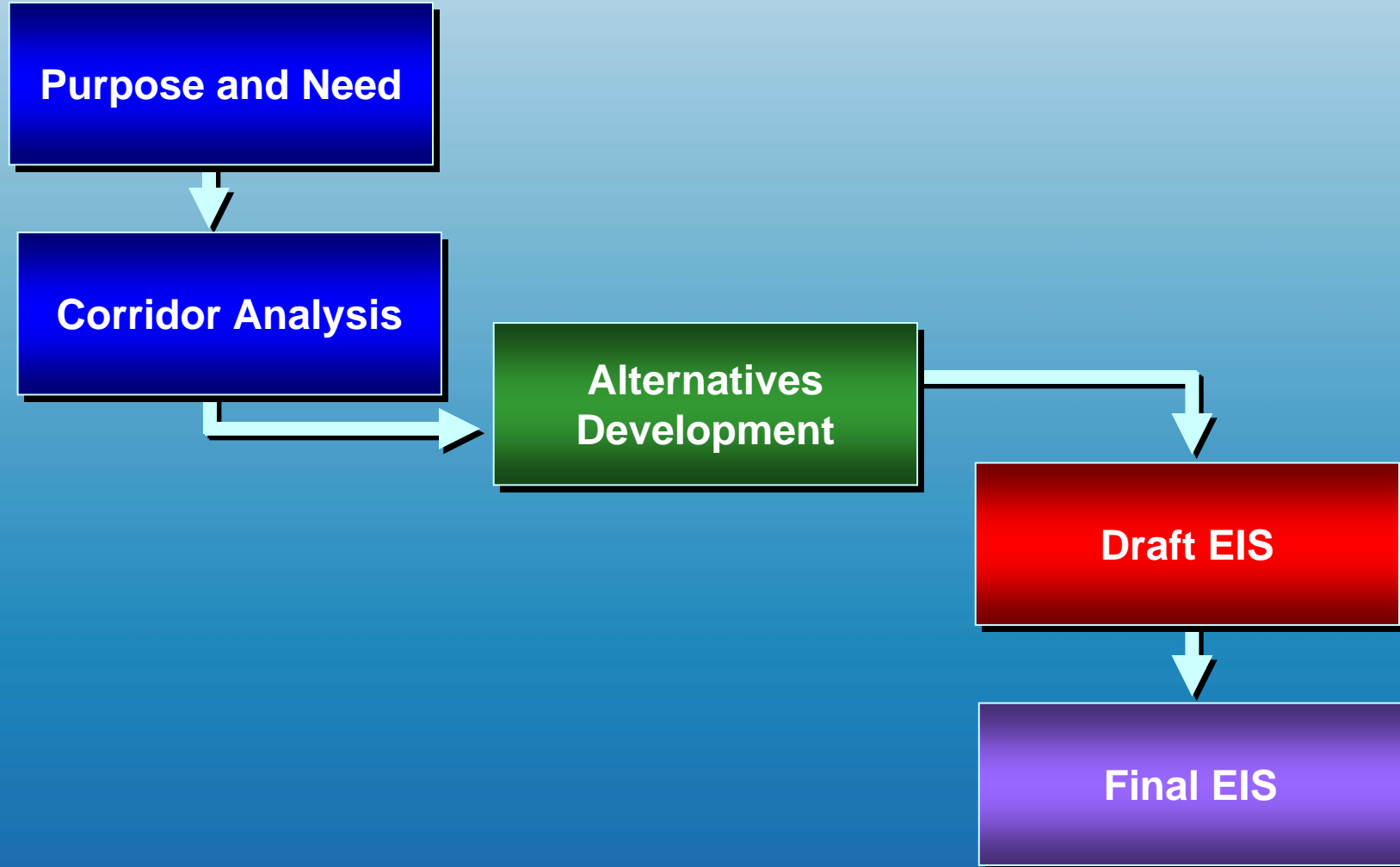


EIS Process

The Federal Highway Administration (**FHWA**) and the Florida Department of Transportation (**department**) are preparing an Environmental Impact Statement (**EIS**) for SR 29 from Oil Well Road to SR 82. The following slides show how the process works.

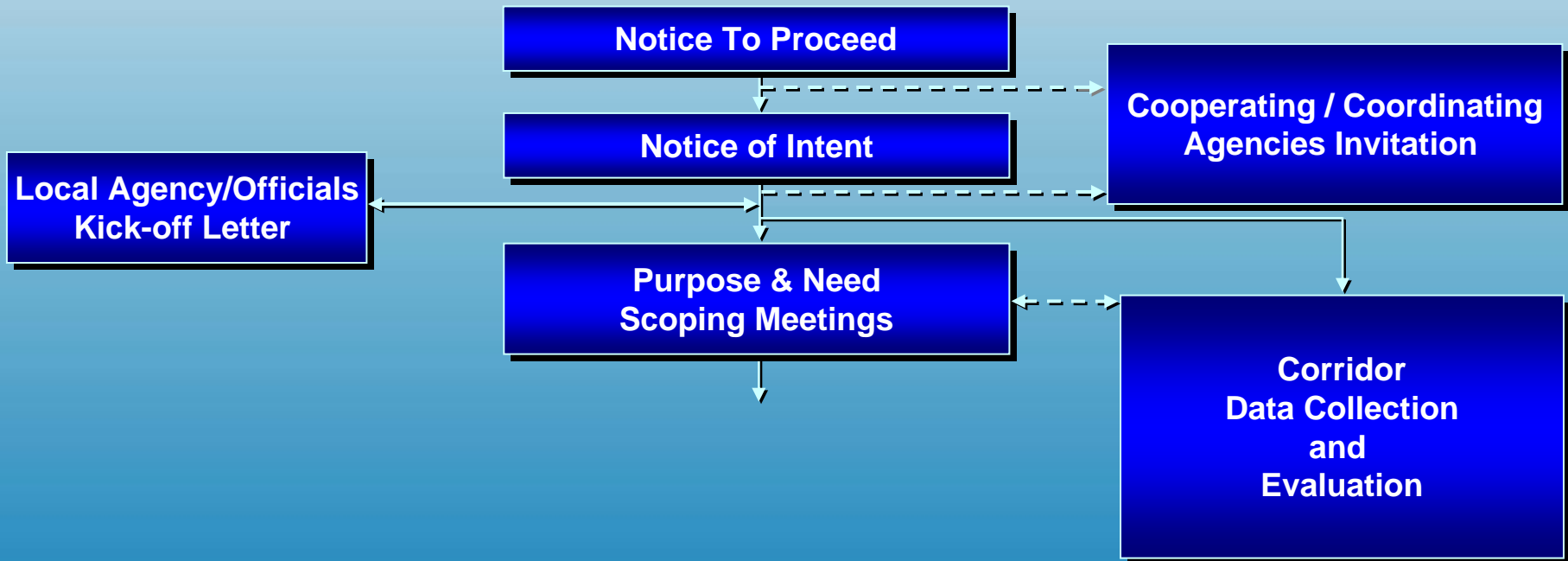


EIS Process



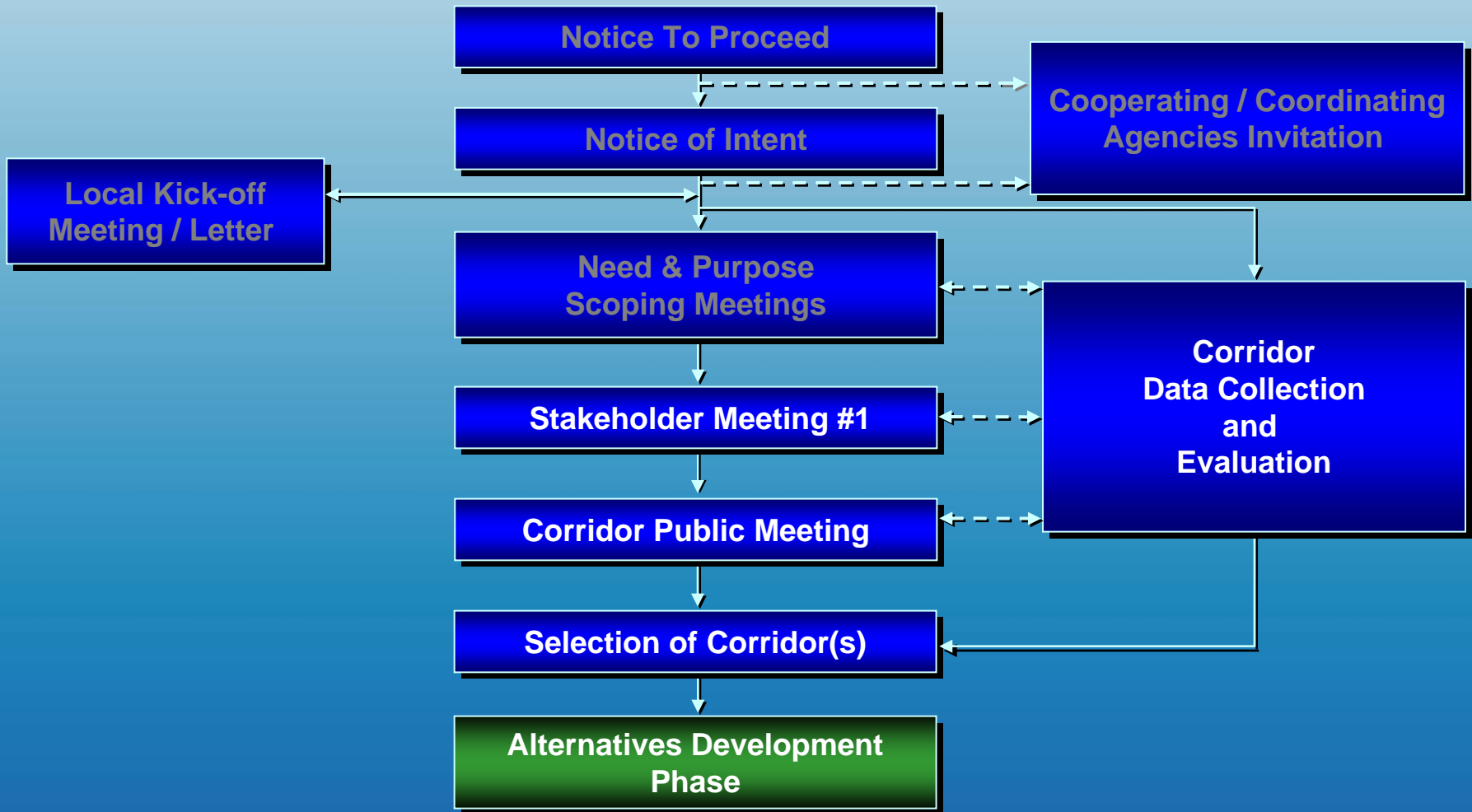


Purpose and Need



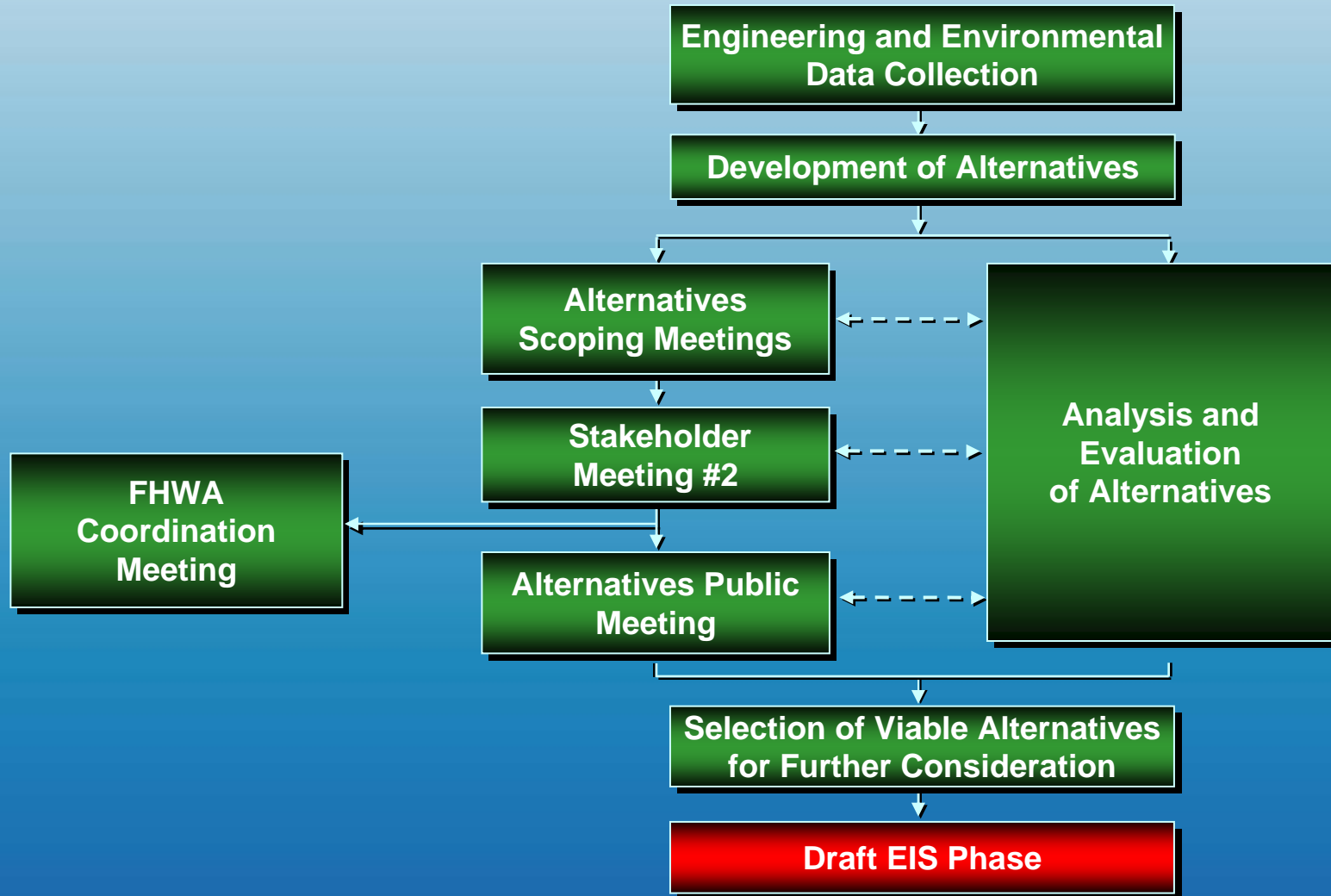


Corridor Analysis Phase





Alternatives Development Phase



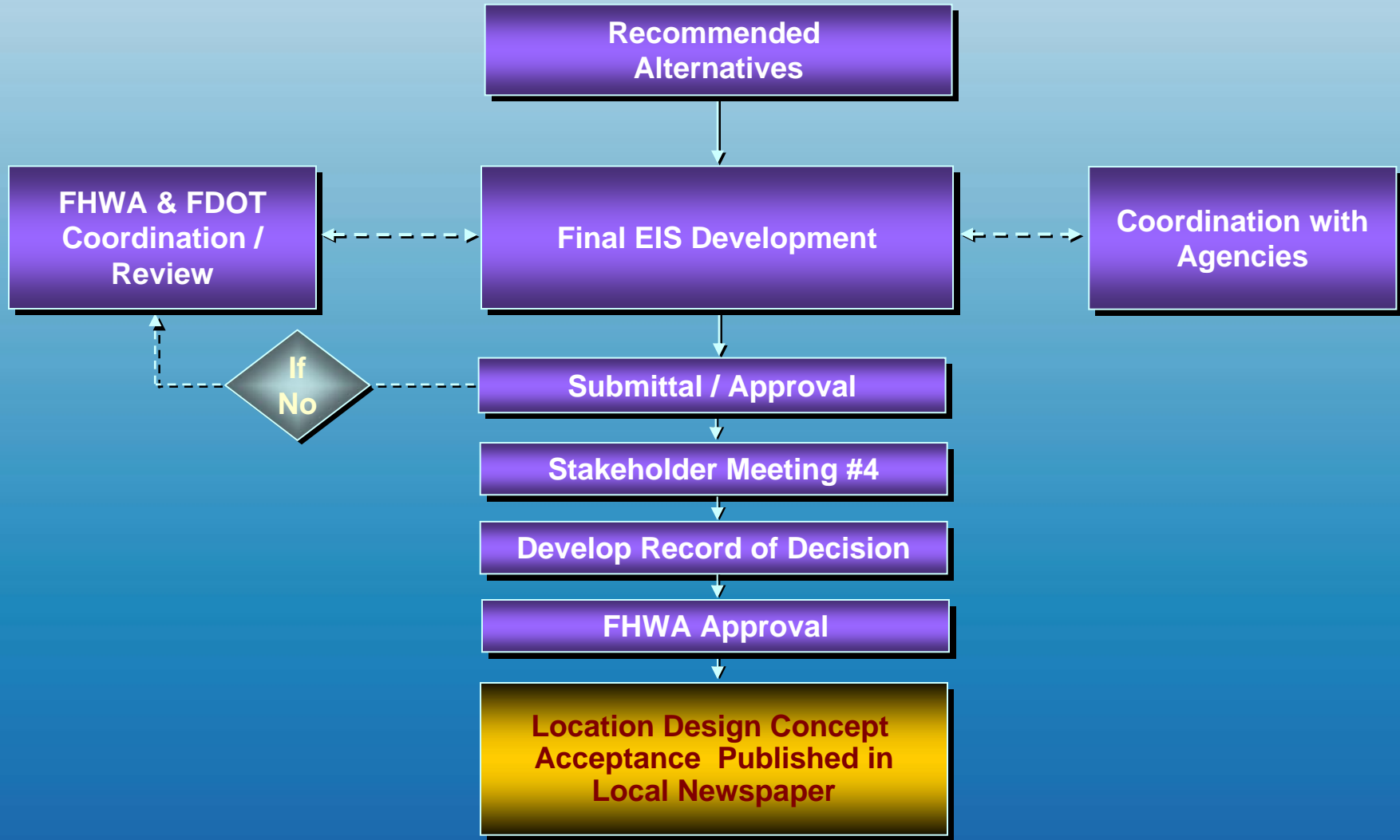


Draft EIS Phase





Final EIS Phase



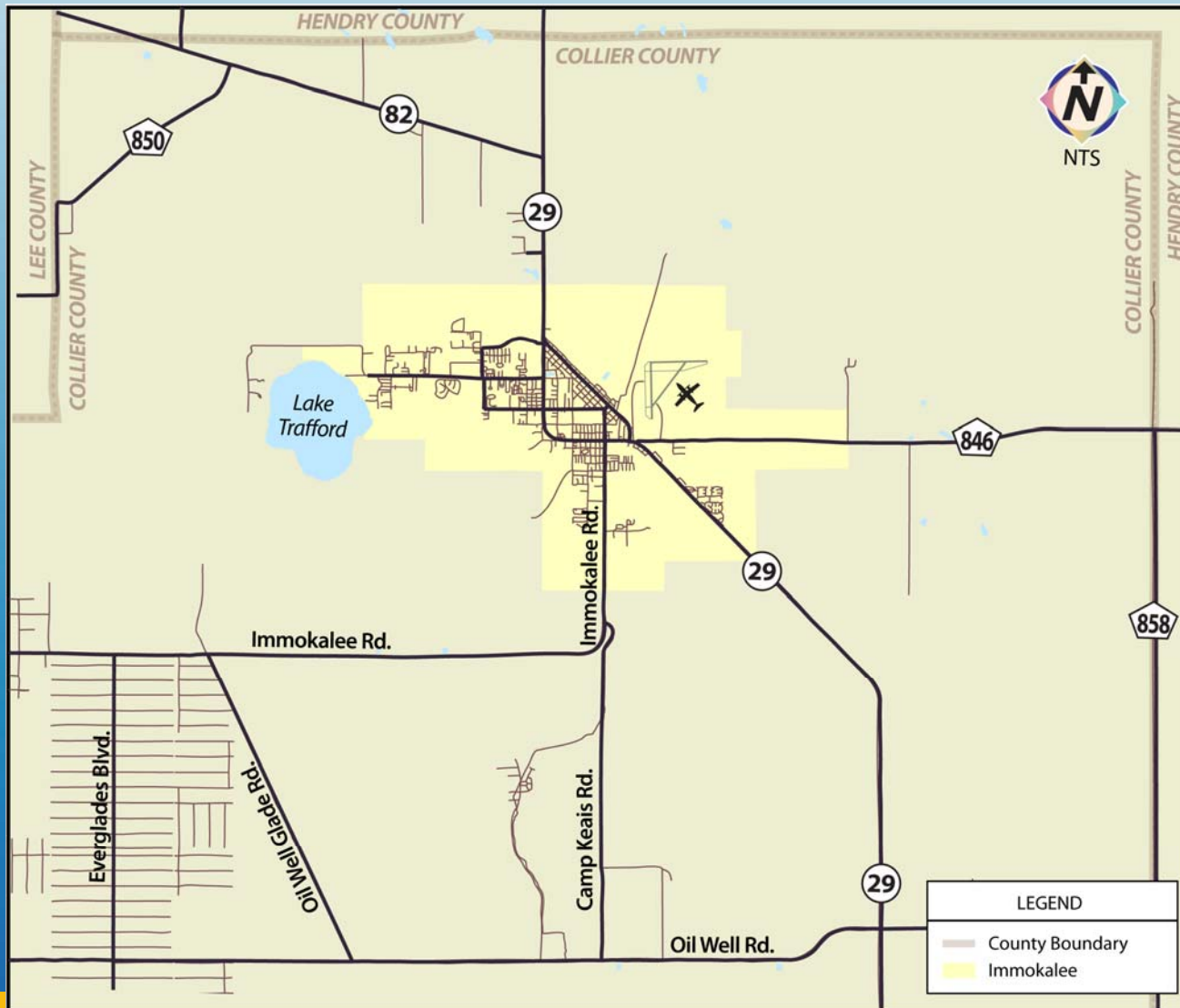


Project Description

The SR 29 PD&E Study project limits extend from Oil Well Road to SR 82. The project will evaluate the widening of the existing SR 29 to four lanes, and will also study potential new corridors that bypass downtown Immokalee.

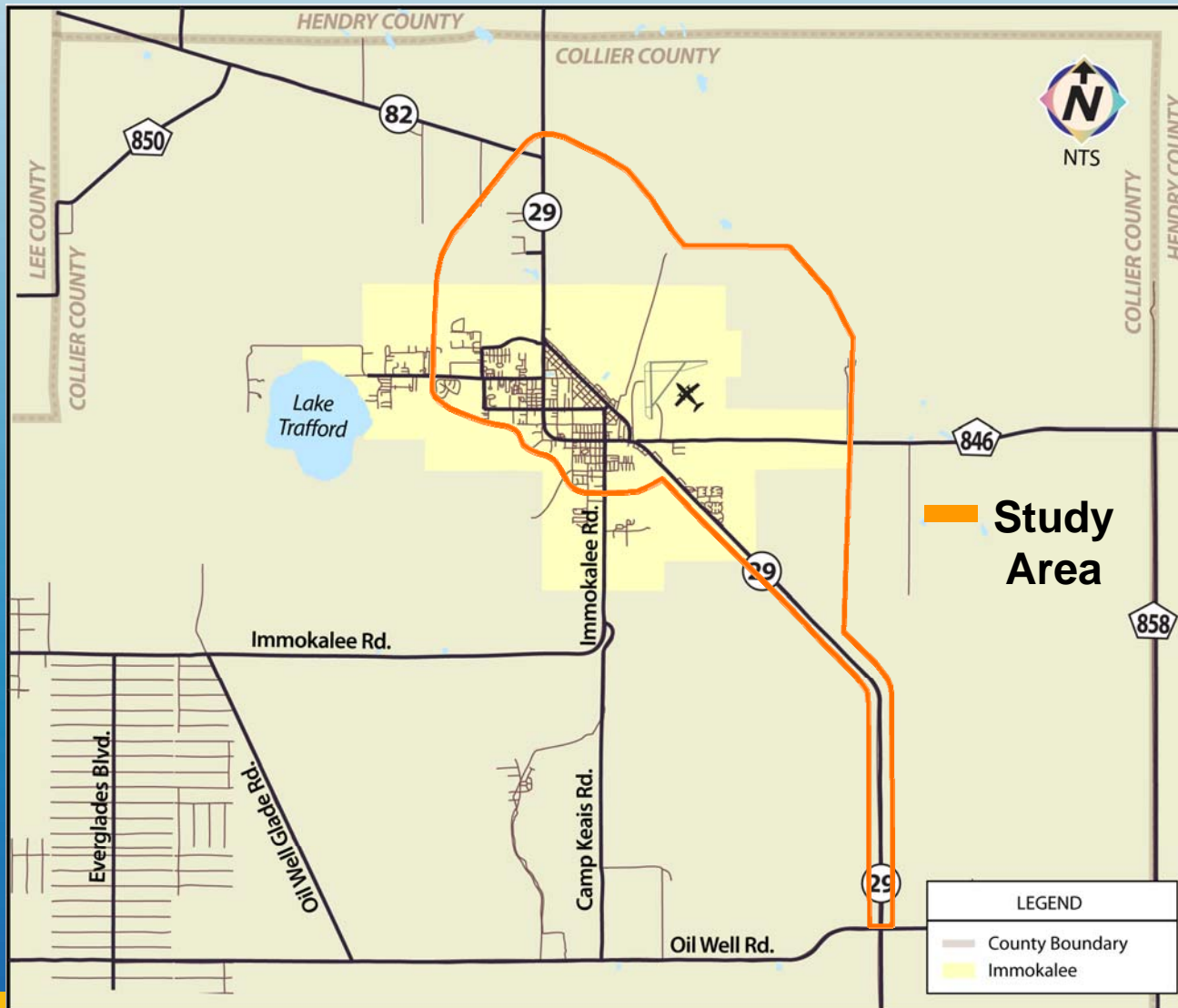


Project Location Map



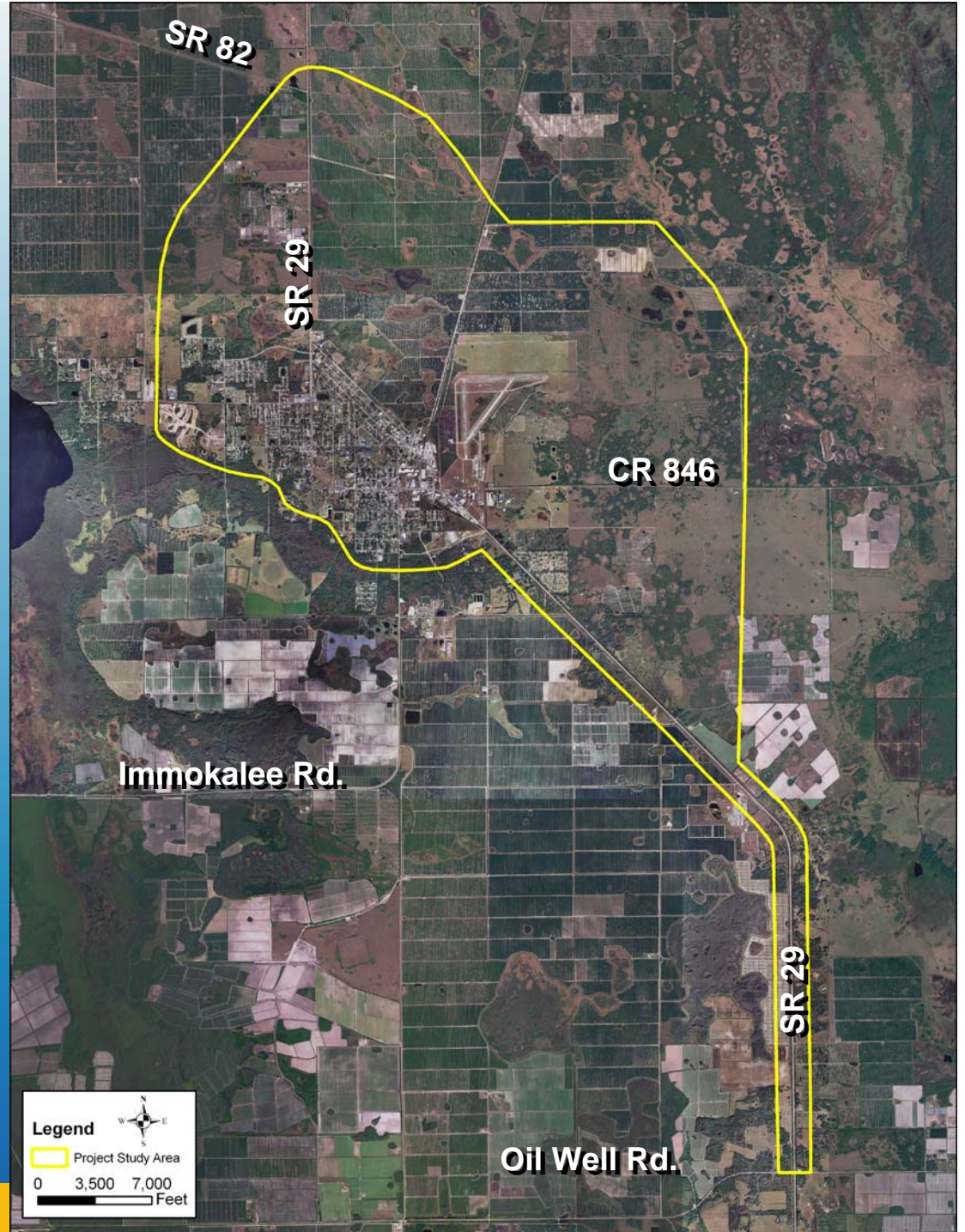


Project Location Map





Project Study Area on Aerial Base Map



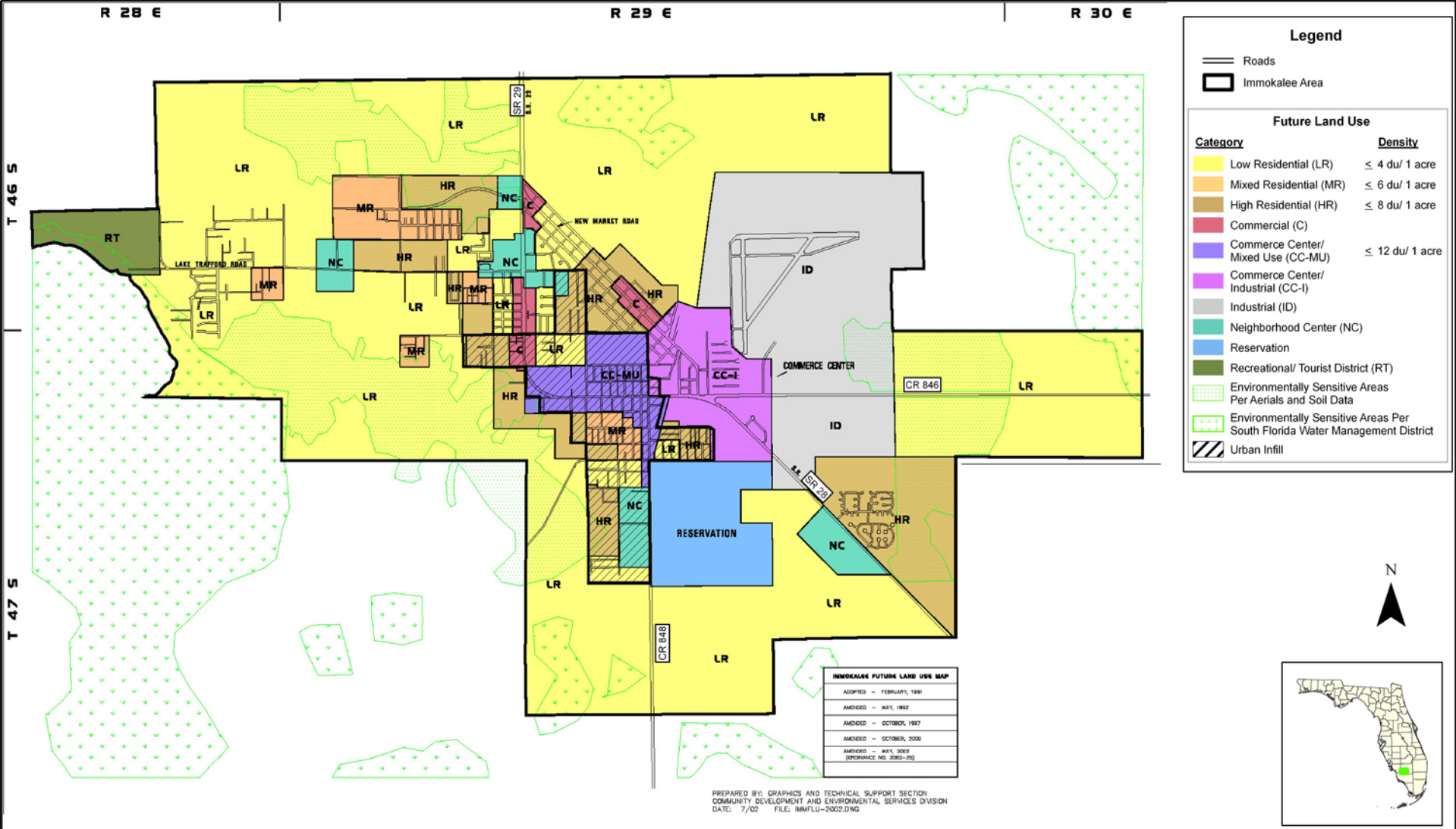


Identify Significant Issues

These slides show potential issues that have been identified. These issues and others will be considered during the study process.



Immokalee Future Land Use Map



Legend

— Roads
 □ Immokalee Area

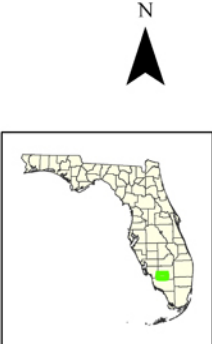
Future Land Use

Category	Density
Low Residential (LR)	≤ 4 du/ 1 acre
Mixed Residential (MR)	≤ 6 du/ 1 acre
High Residential (HR)	≤ 8 du/ 1 acre
Commercial (C)	
Commerce Center/ Mixed Use (CC-MU)	≤ 12 du/ 1 acre
Commerce Center/ Industrial (CC-I)	
Industrial (ID)	
Neighborhood Center (NC)	
Reservation	
Recreational/ Tourist District (RT)	
Environmentally Sensitive Areas Per Aerials and Soil Data	
Environmentally Sensitive Areas Per South Florida Water Management District	
Urban Infill	

IMMOKALEE FUTURE LAND USE MAP

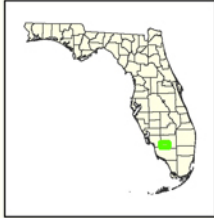
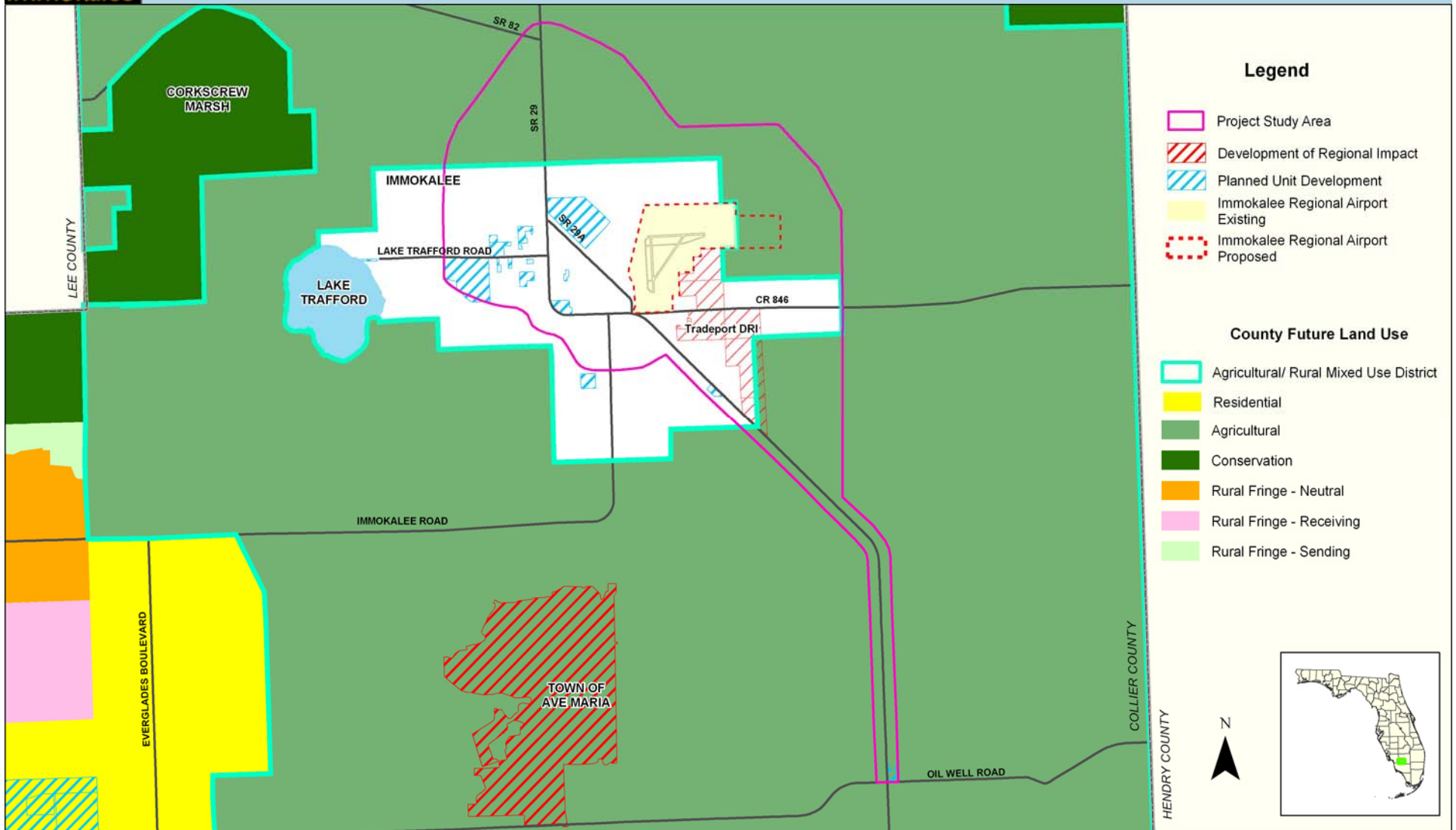
ADOPTED - FEBRUARY, 1991
AMENDED - MAY, 1992
AMENDED - OCTOBER, 1997
AMENDED - OCTOBER, 2000
AMENDED - MAY 2009 (PERFORMANCE NO. 2000-20)

PREPARED BY: GRAPHICS AND TECHNICAL SUPPORT SECTION
 COMMUNITY DEVELOPMENT AND ENVIRONMENTAL SERVICES DIVISION
 DATE: 7/02 FILE: IMMFLU-2002.DWG



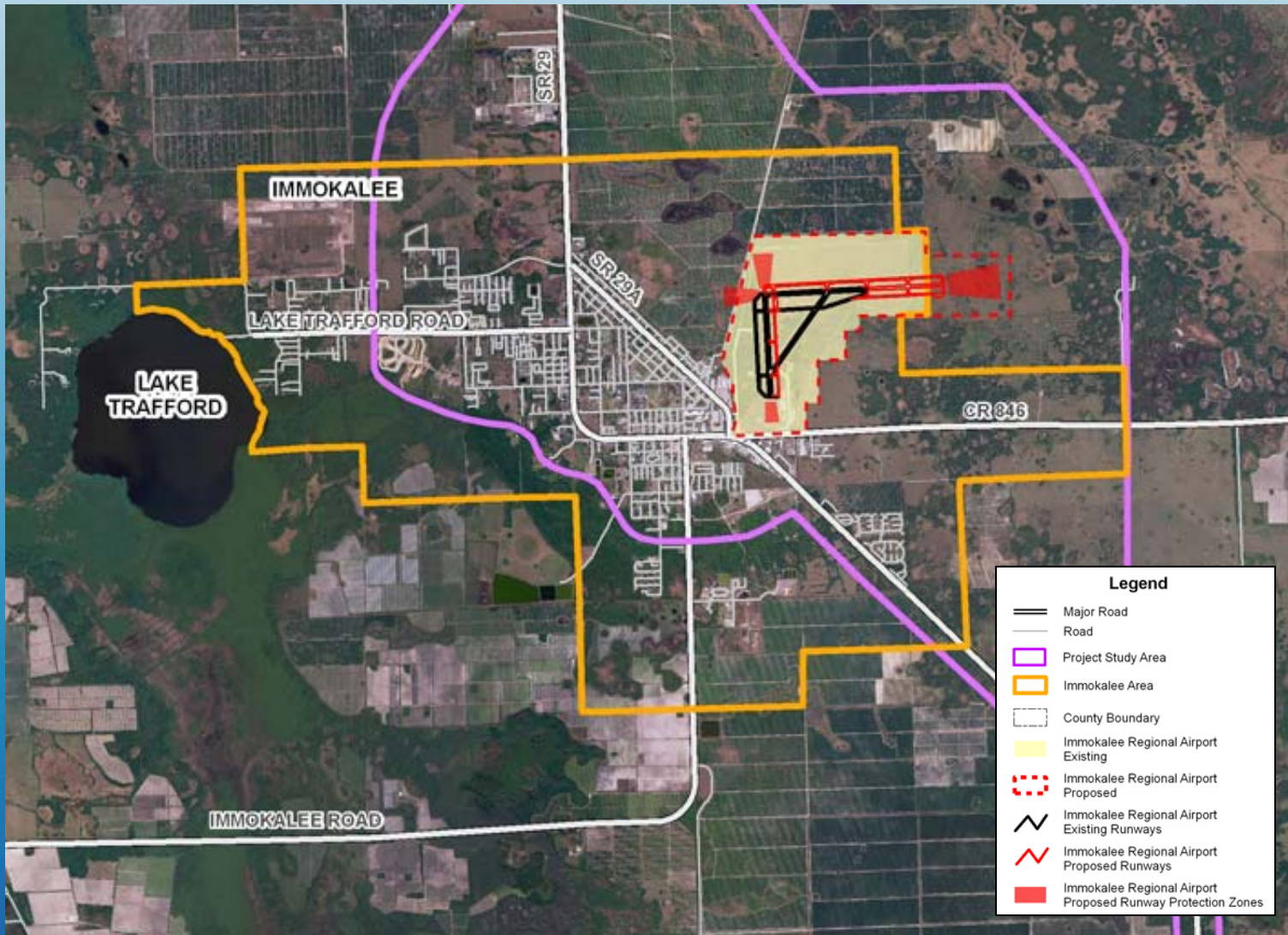


Major Developments



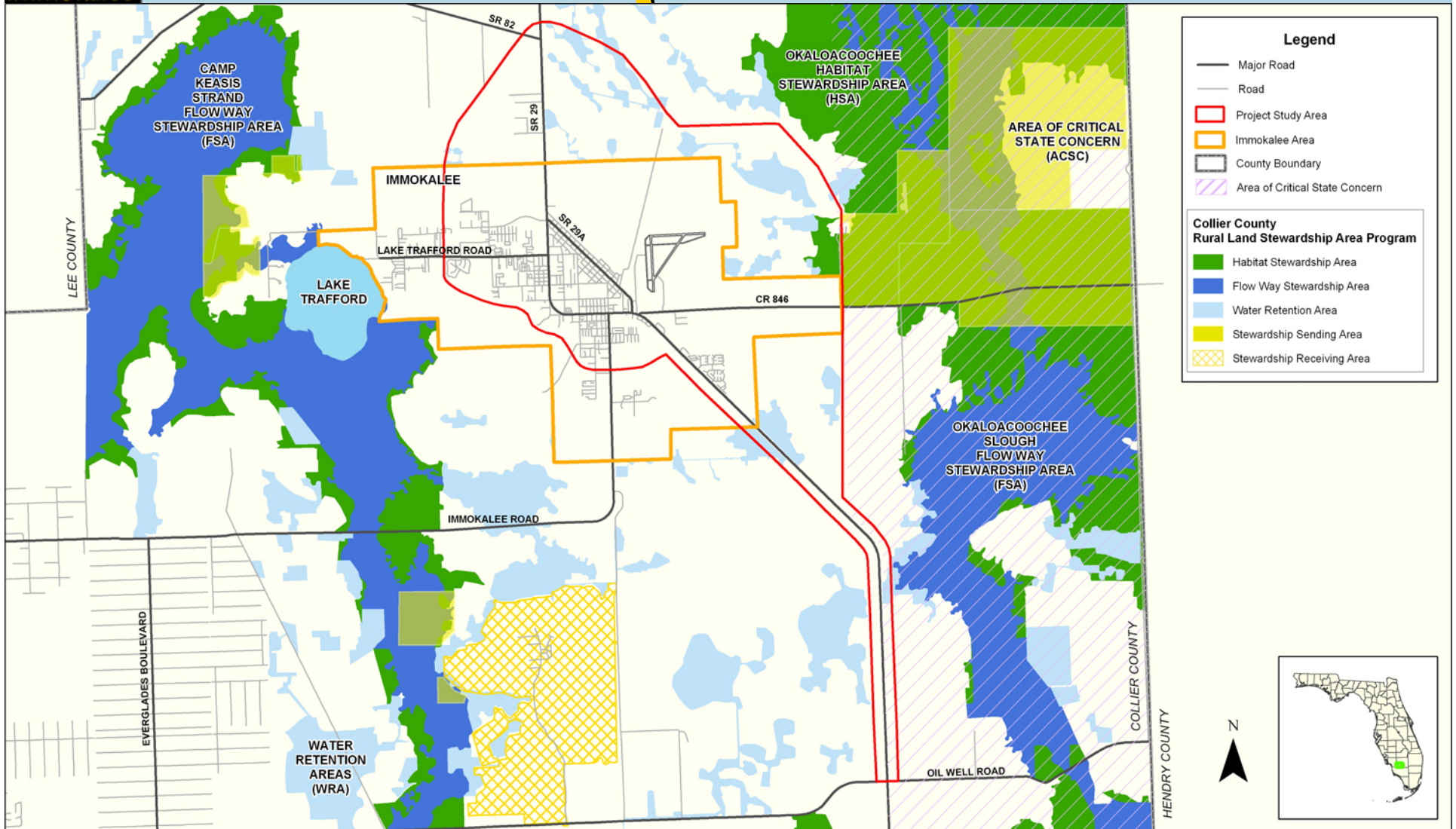


Immokalee Regional Airport Master Plan



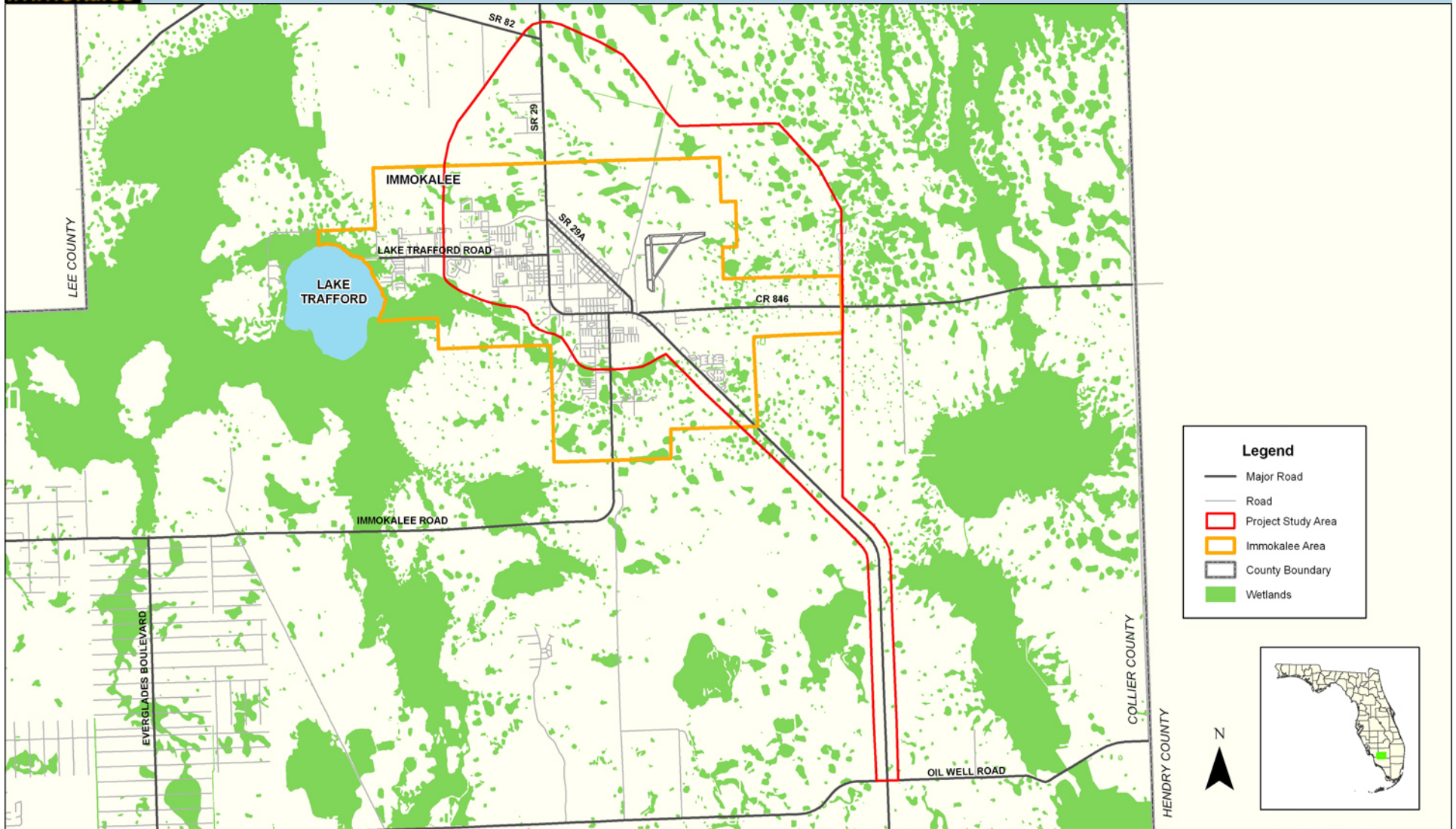


Rural Land Stewardship Areas



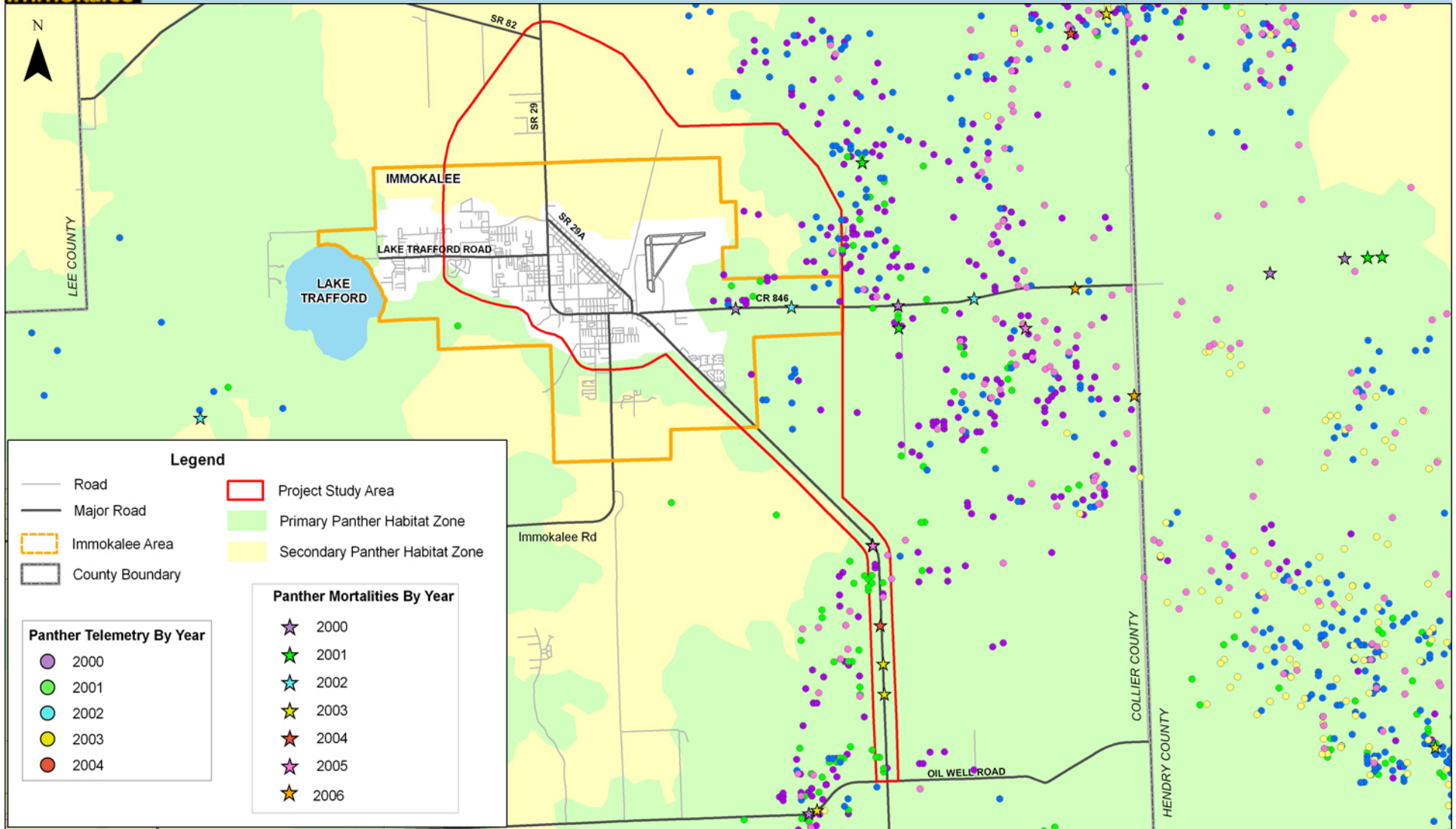


Wetlands





Panther Focus Area





Project Schedule

The SR 29 PD&E Study will take approximately 36 months to complete. The following slide shows the schedule.



Purpose & Need Statement

The reason for this public meeting is to allow you the opportunity to review and comment on the SR 29 PD&E Study Purpose & Need Statement.



Purpose & Need Statement

What is a Purpose & Need Statement?

Purpose & Need is a required section of the EIS. It clearly defines the need for the proposed improvement and describes how the project will address community, social, and economic needs related to transportation.



Draft Purpose & Need Statement

- Your handout contains a copy of the draft Purpose & Need Statement



Draft Purpose & Need Statement

- Your handout contains a copy of the draft Purpose & Need Statement
- Please review it and provide us with your comments



Draft Purpose & Need Statement

- Your handout contains a copy of the draft Purpose & Need Statement
- Please review it and provide us with your comments
- Department representatives are here to receive your comments



Comments

- The department would like your comments concerning the SR 29 Purpose & Need statement



Comments

- The department would like your comments concerning the SR 29 Purpose & Need statement.
- You may complete the comment form in your handout and drop it in the comment box tonight or



Comments

- The department would like your comments concerning the SR 29 Purpose & Need statement.
- You may complete the comment form in your handout and drop it in the comment box tonight or
- Mail it to Scott McCall, FDOT Project Manager, at the address listed on the back of the comment form.



Comments

You may also submit comments on the project website at www.sr29collier.com.



SR 29 PD&E Study

**Thank you for attending the
Purpose & Need Scoping
Public Meeting**