

Section 4(f) Resources

Florida Department of Transportation

SR 31 FROM SR 80 (PALM BEACH BLVD) TO SR 78 (BAYSHORE RD)

District: FDOT District 1

County: Lee County

ETDM Number: 14359

Financial Management Number: 441942-1-22-01

Federal-Aid Project Number: N/A

Project Manager: Patrick Bateman

The environmental review, consultation, and other actions required by applicable federal environmental laws for this project are being, or have been, carried out by the Florida Department of Transportation (FDOT) pursuant to 23 U.S.C. § 327 and a Memorandum of Understanding dated May 26, 2022 and executed by the Federal Highway Administration and FDOT. Submitted pursuant 49 U.S.C. § 303.

Table of Contents

Summary and Approval	1
Caloosahatchee Trail	2
Great Calusa Blueway	4
Caloosahatchee River Canal Resource Group (8LL02586)	5
Project-Level Attachments	7
Resource Attachments	9

Summary and Approval

Resource Name	Facility Type	Property Classification	Owner/Official with Jurisdiction	Recommended Outcome	OEM SME Action
Caloosahatchee Trail	Multi-Use Trail	Park/Rec Area	FDOT / Lee County	Exception/Exemption	Determination 04-18-2024
Great Calusa Blueway	Blueway / Paddling Trail	Park/Rec Area	Lee County	No Use	Determination 04-18-2024
Caloosahatchee River Canal Resource Group (8LL02586)	Canal	Historic Site	SHPO	Exception/Exemption	Determination 10-11-2023

Caloosahatchee Trail

Facility Type: Multi-Use Trail

Property Classification: Park/Rec Area

Address and Coordinates:

Address:

Latitude: 264206.37N Longitude: 814534.10W

Description of Property:

The Caloosahatchee Trail, designated as part of the Florida Shared-Use Nonmotorized Trail Network (Florida SUN Trail Network), extends 22 miles in Lee County from US 41 to the Hendry County Line. The same corridor is listed as part of the Pine Island - Hendry Trail and is included in the Lee County Greenways Master Plan. The trail consists of a combination of existing and planned trail segments along portions of SR 78, SR 31, and SR 80. Within the project study area, SR 80 supports the only existing trail.

The Florida SUN Trail Network consists of multiuse trails or shared-use paths physically separated from motor vehicle traffic which, by virtue of design, location, and extent of connectivity, provide nonmotorized transportation opportunities for bicyclists and pedestrians statewide. The Florida SUN Trail Network is intended to support a range of use by the general public ranging from transportation-based use to recreational activities such as walking, biking, or jogging.

Owner/Official with Jurisdiction: FDOT / Lee County

Recommended Outcome: Exception/Exemption

Exception/Exemption Type: Certain trails, paths, bikeways, and sidewalks that meet one of the circumstances in 23 CFR 774.13(f)(1-4).

Exception/Exemption Justification:

The Caloosahatchee Trail is designated as one segment of the Florida SUN Trail Network. The Florida SUN Trail Network is one part of the statewide multi-modal transportation system. The primary purpose of these networks and systems is to support transportation. Within the project limits, the Caloosahatchee Trail is listed as an unfunded need on SR 31. The FDOT is currently constructing a 10-foot multi-use path on the north side of SR 80 (as part of project 429823-1). The proposed improvement of SR 31 (as part of project 441942-1) includes a 12-foot multi-use trail to support the planned/existing trail system.

Enabling State Statues (Fla. Stat. 339.81) note the SUN Trail System is intended to meet growing transportation system demands by advancing alternative travel modes to meet the needs of residents and visitors. The same State Statues direct the Florida Department of Transportation to develop the SUN Trail Network as a system of trails which allows nonmotorized vehicles and pedestrians to use the system to access a variety of destinations for a variety of trip purposes, including accessing work, school, shopping, and other personal business, as well as social, recreational, and personal fitness purposes.

As such, the Caloosahatchee Trail meets the qualifications for 23 CFR 774.13(f)(4) Trails, paths, bikeways, and sidewalks that are part of the local transportation system and which function primarily for transportation.

OEM SME Determination Date: 04-18-2024

Great Calusa Blueway

Facility Type: Blueway / Paddling Trail

Property Classification: Park/Rec Area

Address and Coordinates:

Address: Caloosahatchee River, FL, USA

Latitude: 2642'58.35 N Longitude: 8145'38.45 W

Description of Property:

The Great Calusa Blueway is a paddling trail that passes through the coastal waters of Lee County from the Pine Island Sound to Estero Bay, up the Caloosahatchee River and through its tributaries. The trail supports outdoor recreation guiding canoeists and kayakers via easy-to-identify brown-and-white signs located along the course of the trail. The 190-mile trail is accessible to the general public at no cost. The Caloosahatchee segment of the blueway can be accessed in Lee County through a series of 20 launch sites located on both public and private properties.

Owner/Official with Jurisdiction: Lee County

Relationship Between the Property and the Project

The Great Calusa Blueway follows the Caloosahatchee River within the project area. The proposed improvement of SR 31 would include replacement of the existing bridge (Bridge#120064) over the Caloosahatchee River. No physical improvement made as part of the blueway is present within the bounds of the project. The project will maintain vessel traffic on the Caloosahatchee in the future condition and during construction. No effects to the attributes, features, or activities that qualify the Great Calusa Blueway for protection under Section 4(f) are anticipated. No use of the blueway will occur.

Yes No

Will the property be "used" within the meaning of Section 4(f)?

Recommended Outcome: No Use

OEM SME Determination Date: 04-18-2024

Caloosahatchee River Canal Resource Group (8LL02586)

Facility Type: Canal

Property Classification: Historic Site

Address and Coordinates:

Address:

Latitude: 26.716559 Longitude: -81.760757

Description of Property:

The Caloosahatchee River Canal Resource Group (8LL02586) runs approximately 65 miles from Lake Okeechobee in southeastern Glades County to the Gulf of Mexico, crossing through Glades, Hendry, and Lee Counties. It is a straight, upland flow-through canal that maintains flow between two open boundaries, with Lake Okeechobee as the eastern boundary and the Gulf of Mexico as the western boundary. It is utilized to facilitate drainage and flood control, navigation, salinity control, irrigation, municipal water supplies, and maintenance of the Lake Okeechobee regulation schedule.

The Caloosahatchee River Canal was originally constructed in the 1880s and 1890s as part of the Disston Drainage Contract-Hamilton Disston's initial attempt to drain the Everglades. The canal has been altered since it was originally constructed, primarily through the deepening and straightening of the canal in the 1930s in response to hurricanes in the 1920s. In the mid-1950s, the canal was enlarged to a width of 250 feet and a depth of 8 feet. The historic route of the canal through the project area has not been disrupted or changed since its original construction.

In 2012, the Caloosahatchee River Canal Resource Group (8LL02586) was evaluated as eligible for listing in the National Register of Historic Places (NRHP) under Criterion A for its direct association with late nineteenth-century efforts to drain the Everglades and develop agricultural pursuits in south Florida. The portion of 8LL02586 within the current APE still conveys its significance and is considered NRHP-eligible. The SHPO concurred with this determination on July 24, 2023.

The Preferred Alternative includes a combination of widening existing SR 31 from SR 80 for about 0.7 miles, then shifting 300 feet east prior to the Wilson Pigott Bridge to minimize impacts to the existing Florida Gas Transmission (FGT) line. The project would tie into the proposed SR 31 project at the northern terminus. A new high-level fixed bridge would be constructed to replace the existing Wilson Pigott Bridge over the Caloosahatchee River Canal Resource Group (8LL02586), and the proposed bridge will meet United States Coast Guard (USCG) vertical clearance requirements for a high-level fixed bridge.

As part of these improvements, the new bridge construction will include new supports/concrete piers within the Caloosahatchee River Canal and rip rap will be installed immediately adjacent to the bridge ends at the shoreline. These improvements will not involve changes that would compromise the integrity of the canal, such as rerouting, cutting off or filling in, widening, severing from other waterways, change of function, or removal of ancillary structures or features that contribute to its significance. FDOT has determined that the project will have no adverse effects on the Caloosahatchee River Canal Resource Group (8LL02586) and the SHPO concurred with this determination on July 24, 2023.

Owner/Official with Jurisdiction: SHPO

Recommended Outcome: Exception/Exemption

Exception/Exemption Type: Temporary occupancies of land that are so minimal as to not constitute a use within the meaning of Section 4(f) and that meet all of the conditions in (23 CFR 774.13(d)(1-5).

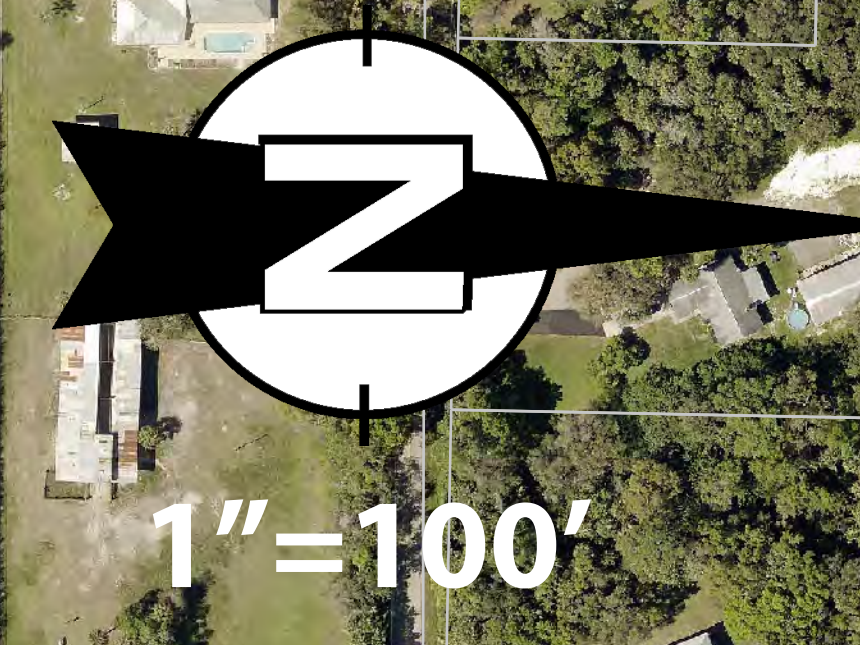
Exception/Exemption Justification:

The work proposed within the boundary of 8LL02586 work meets the conditions of a temporary occupancy (23 CFR 774.13 (d)). As the overall project proposes to widen and reconstruct SR 31, the duration of the work within 8LL02586 is temporary and will be less than the time needed for construction of the project. There will be no change in ownership of the land, and the scope of work is limited to bridge replacement. No alterations to the canal are proposed, there will be no changes to the Section 4(f) property, no anticipated permanent adverse physical impacts, and no interference with the protected activities, features, or attributes of the property on either a temporary or permanent basis. Similarly, as no work to the canal itself is proposed, the resource will remain in a condition which is at least as good as that which existed prior to the project. Per coordination with OEM, SHPO concurrence with FDOTs determination of no adverse effect serves as the OWJs agreement with the temporary occupancy conditions.

OEM SME Determination Date: 10-11-2023

Project-Level Attachments

44194212201-CE2-D1-SR_31_Design_Concept-2023-0417 (r)



SOUTHWEST FLORIDA & LEE COUNTY FAIR

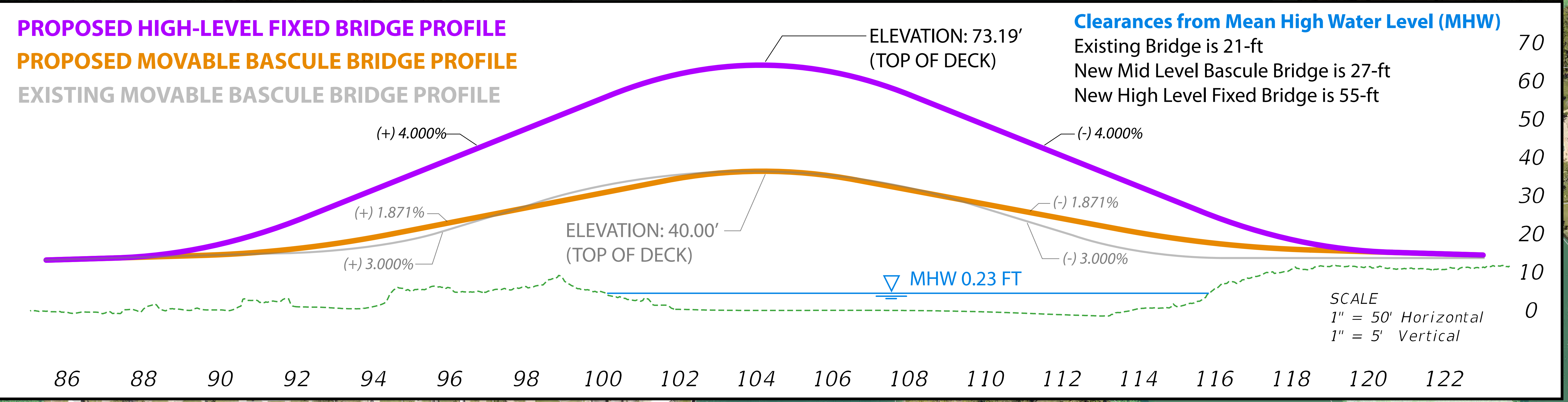
LEE CIVIC CENTER

THE BOATHOUSE TIKI BAR & GRILL

SWEETWATER LANDING MARINA

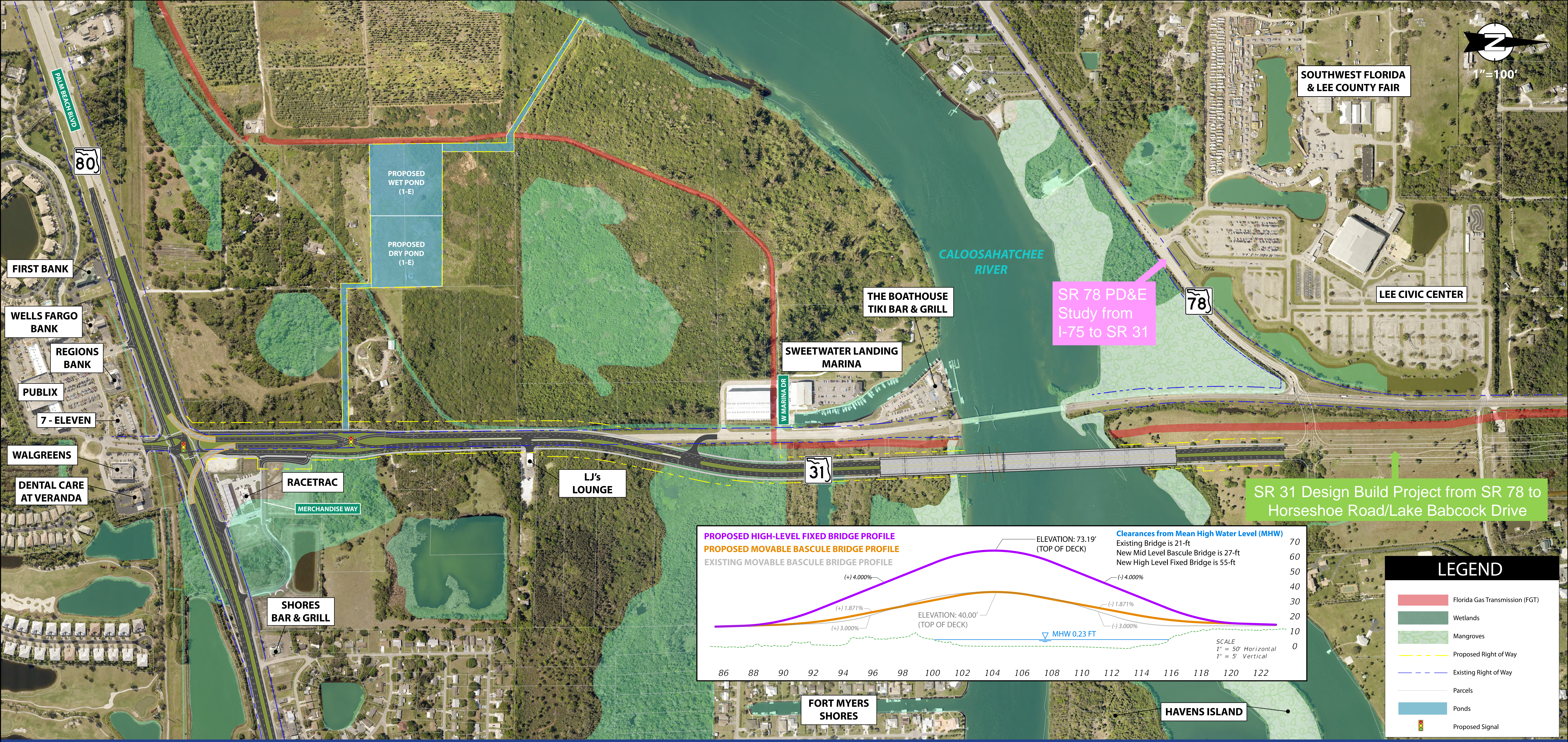
SR 78 PD&E Study from I-75 to SR 31

SR 31 Design Build Project from SR 78 to Horseshoe Road/Lake Babcock Drive



LEGEND

- Florida Gas Transmission (FGT)
- Wetlands
- Mangroves
- Proposed Right of Way
- Existing Right of Way
- Parcels
- Ponds
- Proposed Signal



SR 31 ALTERNATIVE 1B/2B (Flyover at SR 80)

Resource Attachments

Caloosahatchee Trail
SR31 Trail Overview Map
SR 31 Project and Section of Resource Location
SR 31 4/ Reference OS Abbviate Table

Great Calusa Blueway
SR31 Project and Section of Resource Location - Calusa Blueway 2021.0027
Great Calusa Blueway System Map

Caloosahatchee River Canal Resource Group (SL122586)
Caloosahatchee River Canal Section 4/5 Resource map
Concurrent Letter_4/19/21 SR310 Transmittal_MOR_ML_KLC

Caloosahatchee Trail

Contents:

SUN Trail Statewide Map

SR 31 Project and Section 4f Resource Location




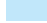
SR 31 4f Reference GIS Attribute Table



Shared-Use Nonmotorized (SUN) Trail Network Statewide Map



LEGEND

-  SUN Trail Network
-  Existing Trail
-  Strategic Intermodal System (SIS) Facilities
-  Water

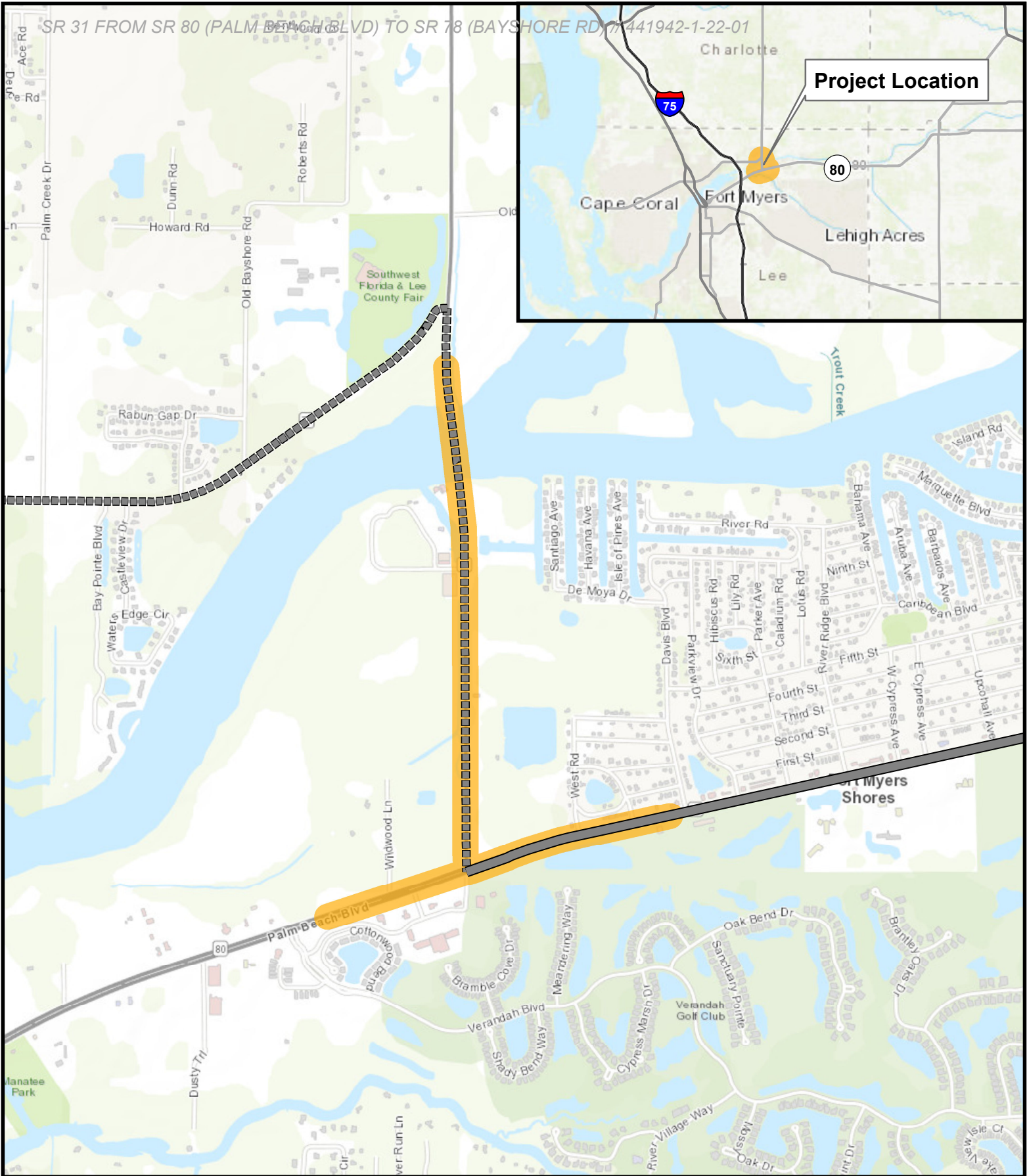
NOTES

No Warranties: This map and its content is made available by the Florida Department of Transportation (FDOT) on an "as is", "as available" basis without warranties of any kind, expressed or implied. This product is for reference purposes only and is not to be construed as a legal document or survey instrument. Information is subject to change.

Disclaimer of Liability: The user of this map and data assumes all responsibility and risk for the use of both. Under no circumstances, including negligence, shall the FDOT or its employees be liable for any direct, indirect, incidental, special, exemplary or consequential damages, or lost profits that result from the use, misuse or inability to use the map and data. Additional trail information may be obtained by contacting your local government.

Document Path: S:\ProjRecurring\SunTrails\GIS\Mapping\Statewide\2022\SUNTrail_StatewideMap_2022-02-01.pdf

SR 31 FROM SR 80 (PALM BEACH BLVD) TO SR 78 (BAYSHORE RD) 441942-1-22-01



SR 31 - Section 4(f) Reference

FPID: 441942-1

SUN Trail / Caloosahatchee Trail

Section 4(f) Resources
Resource Location

Existing SUN Trail / Caloosahatchee Trail

Planned SUN Trail / Caloosahatchee Trail

Project Limits

Data Source: EDOT
PSUN Trail New Status
March 17, 2023

Attribute Table

SUN Trail Statewide Network Mapping Tools

Updated: March 17, 2023

Caloosahatchee Trail

FID	658
ROADWAY	12931005
SEG_NAME	Caloosahatchee Trail
STATUS	PROGRAMMED/FUNDED
COUNTY	LEE
CST_TO_CST	NO
CAP_TO_SEA	NO
H_OF_FL	NO
SJ_RV_SEA	NO
SW_CST_CON	NO
ECG	NO
FKOHT	NO
MODIFIEDON	7/26/2018
BEGIN_POST	9.988094
END_POST	12.480363
Length	2.49227
MapID	CALT
DOTDIST	1
CORRIDOR	Caloosahatchee Trail
SUNTRTYP	2
CLASS	
ECO_REGION	Southwest

<http://floridasuntrail.com/> (Accessed April 17, 2023)

Great Calusa Blueway

Contents:

SR31 Project and Section 4f Resource Location - Calusa Blueway 2023-0927

Great_Calusa_Blueway_System_Map



SR 31 - Section 4(f) Reference

FPID: 441942-1

Great Calusa Blueway
 Section 4(f) Resources
 Resource Location

- Great Calusa Blueway
- Project Limits

THE GREAT CALUSA BLUEWAY



3



Tributary Trails



Major Boating Channels



Hiking Trails

Accessible Public Lands

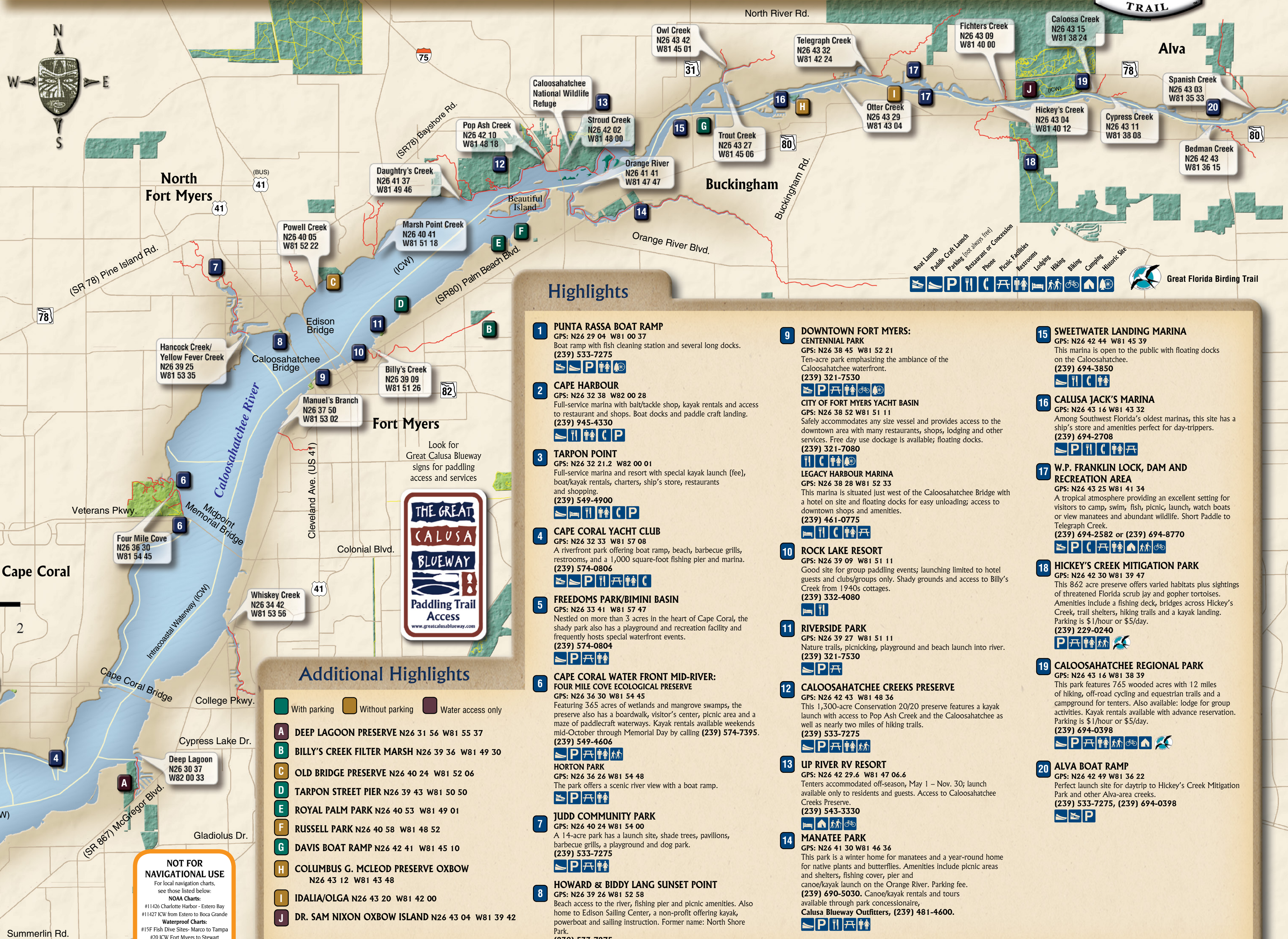


County Sites



Municipal Park Sites

The Great Calusa Blueway - Caloosahatchee River & tributaries



Highlights

- 1 PUNTA RASSA BOAT RAMP**
GPS: N26 29 04 W81 00 37
Boat ramp with fish cleaning station and several long docks.
(239) 533-7275
- 2 CAPE HARBOUR**
GPS: N26 32 38 W82 00 28
Full-service marina with bait/tackle shop, kayak rentals and access to restaurant and shops. Boat docks and paddle craft landing.
(239) 945-4330
- 3 TARPON POINT**
GPS: N26 32 21.2 W82 00 01
Full-service marina and resort with special kayak launch (fee), boat/kayak rentals, charters, ship's store, restaurants and shopping.
(239) 549-4900
- 4 CAPE CORAL YACHT CLUB**
GPS: N26 32 33 W81 57 08
A riverfront park offering boat ramp, beach, barbecue grills, restrooms, and a 1,000 square-foot fishing pier and marina.
(239) 574-0806
- 5 FREEDOMS PARK/BIMINI BASIN**
GPS: N26 33 41 W81 57 47
Nestled on more than 3 acres in the heart of Cape Coral, the shady park also has a playground and recreation facility and frequently hosts special waterfront events.
(239) 574-0804
- 6 CAPE CORAL WATER FRONT MID-RIVER: FOUR MILE COVE ECOLOGICAL PRESERVE**
GPS: N26 36 30 W81 54 45
Featuring 365 acres of wetlands and mangrove swamps, the preserve also has a boardwalk, visitor's center, picnic area and a maze of paddlecraft waterways. Kayak rentals available weekends mid-October through Memorial Day by calling (239) 574-7395.
(239) 549-4606
- 7 JUDD COMMUNITY PARK**
GPS: N26 40 24 W81 54 00
A 14-acre park has a launch site, shade trees, pavilions, barbecue grills, a playground and dog park.
(239) 533-7275
- 8 HOWARD & BIDDY LANG SUNSET POINT**
GPS: N26 39 26 W81 52 58
Beach access to the river, fishing pier and picnic amenities. Also home to Edison Sailing Center, a non-profit offering kayak, powerboat and sailing instruction. Former name: North Shore Park.
(239) 533-7275
- 9 DOWNTOWN FORT MYERS: CENTENNIAL PARK**
GPS: N26 38 45 W81 52 21
Ten-acre park emphasizing the ambiance of the Caloosahatchee waterfront.
(239) 321-7530
- 10 ROCK LAKE RESORT**
GPS: N26 39 09 W81 51 11
Good site for group paddling events; launching limited to hotel guests and clubs/groups only. Shady grounds and access to Billy's Creek from 1940s cottages.
(239) 332-4080
- 11 RIVERSIDE PARK**
GPS: N26 39 27 W81 51 11
Nature trails, picnicking, playground and beach launch into river.
(239) 321-7530
- 12 CALOOSAHATCHEE CREEKS PRESERVE**
GPS: N26 42 43 W81 48 36
This 1,300-acre Conservation 20/20 preserve features a kayak launch with access to Pop Ash Creek and the Caloosahatchee as well as nearly two miles of hiking trails.
(239) 533-7275
- 13 UP RIVER RV RESORT**
GPS: N26 42 29.6 W81 47 06.6
Tenters accommodated off-season, May 1 - Nov. 30; launch available only to residents and guests. Access to Caloosahatchee Creeks Preserve.
(239) 543-3330
- 14 MANATEE PARK**
GPS: N26 41 30 W81 46 36
This park is a winter home for manatees and a year-round home for native plants and butterflies. Amenities include picnic areas and shelters, fishing cover, pier and canoe/kayak launch on the Orange River. Parking fee.
(239) 690-5030. Canoe/kayak rentals and tours available through park concessionaire, **Calusa Blueway Outfitters**, (239) 481-4600.
- 15 SWEETWATER LANDING MARINA**
GPS: N26 42 44 W81 45 39
This marina is open to the public with floating docks on the Caloosahatchee.
(239) 694-3850
- 16 CALUSA JACK'S MARINA**
GPS: N26 43 16 W81 43 32
Among Southwest Florida's oldest marinas, this site has a ship's store and amenities perfect for day-trippers.
(239) 694-2708
- 17 W.P. FRANKLIN LOCK, DAM AND RECREATION AREA**
GPS: N26 43 25 W81 41 34
A tropical atmosphere providing an excellent setting for visitors to camp, swim, fish, picnic, launch, watch boats or view manatees and abundant wildlife. Short Paddle to Telegraph Creek.
(239) 694-2582 or (239) 694-8770
- 18 HICKEY'S CREEK MITIGATION PARK**
GPS: N26 42 30 W81 39 47
This 862 acre preserve offers varied habitats plus sightings of threatened Florida scrub jay and gopher tortoises. Amenities include a fishing deck, bridges across Hickey's Creek, trail shelters, hiking trails and a kayak landing. Parking is \$1/hour or \$5/day.
(239) 229-0240
- 19 CALOOSAHATCHEE REGIONAL PARK**
GPS: N26 43 16 W81 38 39
This park features 765 wooded acres with 12 miles of hiking, off-road cycling and equestrian trails and a campground for tenters. Also available: lodge for group activities. Kayak rentals available with advance reservation. Parking is \$1/hour or \$5/day.
(239) 694-0398
- 20 ALVA BOAT RAMP**
GPS: N26 42 49 W81 36 22
Perfect launch site for daytrip to Hickey's Creek Mitigation Park and other Alva-area creeks.
(239) 533-7275, (239) 694-0398

Additional Highlights

- With parking
- Without parking
- Water access only
- A DEEP LAGOON PRESERVE** N26 31 56 W81 55 37
- B BILLY'S CREEK FILTER MARSH** N26 39 36 W81 49 30
- C OLD BRIDGE PRESERVE** N26 40 24 W81 52 06
- D TARPON STREET PIER** N26 39 43 W81 50 50
- E ROYAL PALM PARK** N26 40 53 W81 49 01
- F RUSSELL PARK** N26 40 58 W81 48 52
- G DAVIS BOAT RAMP** N26 42 41 W81 45 10
- H COLUMBUS G. MCLEOD PRESERVE OXBOW** N26 43 12 W81 43 48
- I IDALIA/OLGA** N26 43 20 W81 42 00
- J DR. SAM NIXON OXBOW ISLAND** N26 43 04 W81 39 42

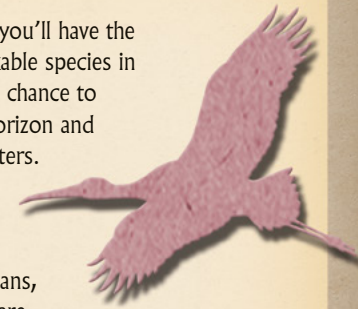
NOT FOR NAVIGATIONAL USE
For local navigation charts, see those listed below:
NOAA Charts:
#11426 Charlotte Harbor - Estero Bay
#11427 ICW from Estero to Boca Grande
Waterproof Charts:
#15F Fish Dive Sites- Marco to Tampa
#20 ICW Fort Myers to Stewart
#21 ICW Fort Myers to Tampa
#25 Cape Romano to Boca Grande
#121F Sanibel To Venice





Observing Wildlife

Along the Great Calusa Blueway, you'll have the opportunity to observe many remarkable species in their natural habitats. You'll have the chance to witness dolphins racing across the horizon and manatees gliding through the backwaters. Bird watching is big here, and best of all, birds can be spotted just about anytime and anywhere. Bald eagles, herons, egrets, ospreys, pelicans, roseate spoonbills and wood storks are just a few of the more than 300 species you can find here.



Unspoiled, Undisturbed, Uninterrupted

During your visit, we hope you will find time to enjoy many of the wonderful experiences there are to be found in our diverse ecosystem. It is an environment that is as beautiful as it is fragile. It is up to all of us – residents and guests alike – to protect it, and leave the same wonders we enjoy today preserved for generations to come.

Help Our Wildlife

- Please dispose of trash and food items properly.
- Observe all wildlife from a safe distance. When on board a vessel, stay at a distance of at least 50 yards (150 feet or 45 meters) and use binoculars or a telephoto lens to get a good view.
- Feeding wildlife is illegal and causes animals to lose their natural fear of humans, and increases their vulnerability to injuries and death.
- Seagrasses are a valuable part of Florida's marine environment. Please use caution at low tide, so as not to impact the fragile sea grass beds and marine life nurseries.
- Pick up fishing line and debris – leave the scene cleaner than you found it.

Recommended Safety Gear

- Flotation gear - Florida law requires a Coast Guard approved, readily accessible and wearable personal flotation device (PFD) for each occupant. PFDs must be worn by all occupants under age 6.
- Potable water – Be careful of dehydration
- Extra paddle
- Bow and stern line
- First aid kit
- Flashlight and whistle
- Insect repellent
- Sunglasses, sunscreen, covering and hats
- Binoculars, GPS system & compass
- Cell phone
- Water shoes, dry bag
- Map or chart

THE GREAT CALUSA BLUEWAY



Lee County Paddling Trails

Estero Bay - Pine Island Sound - Matlacha Pass

For paddling opportunities in Charlotte County visit:
www.charlottecountyfl.com/communityservices/blueway.asp

Hendry & Glades counties / Okeechobee Waterway ▶



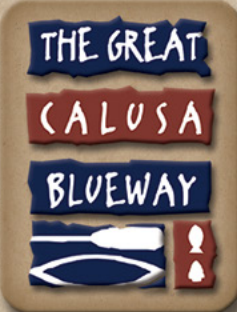
Eco Parks Guide

Parks with an emphasis on the ecology of Southwest Florida are identified by the numbers below. For detailed information on each of them, and a complete list of parks, visit www.FortMyers-Sanibel.com.

- 1 Audubon Corkscrew Swamp Sanctuary
- 2 Bowditch Point Regional Park
- 3 Caloosahatchee Regional Park
- 4 Cayo Costa State Park
- 5 Four Mile Cove Ecological Preserve
- 6 Hickey's Creek Mitigation Park
- 7 J.N. "Ding" Darling National Wildlife Refuge
- 8 Koshlan State Historic Site
- 9 Lakes Regional Park
- 10 Lovers Key State Park
- 11 Manatee Park
- 12 Matanzas Pass Preserve
- 13 Rotary Park
- 14 Six Mile Cypress Slough Preserve
- 15 Mound House
- 16 Randell Research Center
- 17 Sanibel-Captiva Conservation Foundation
- 18 Jaycee Park
- 19 Prarie Pines
- 20 Bob Janes Preserve



Lee County Paddling Trail
 Caloosahatchee River & Tributaries



Lee County invites paddlers from around the world to explore the fabled bays, rivers, backwaters and shorelines of Southwest Florida. The Great Calusa Blueway paddling trail has been developed by Lee County Parks & Recreation and funded with tourist development tax dollars specifically dedicated to beach and shoreline enhancement projects.

Inspired by the indigenous Calusas, the Great Calusa Blueway encompasses three distinct regions of the Gulf of Mexico coast. The first portion of the trail meanders through Estero Bay, while the second segment centers on Pine Island Sound and Matlacha (pronounced Mat-lashay) Pass. A third leg of the trail takes paddlers inland to the Caloosahatchee and its tributaries.

This map shows all three regions, but covers only the Caloosahatchee River and its tributaries in detail. We hope it will serve as your guide to the natural and historic highlights of these protected waterways while also helping you locate amenities along the trail.



3410 Palm Beach Blvd., Fort Myers, FL 33916
 239-533-7275
 For More Information:
 Paddling Trail - www.CalusaBlueway.com
 Area Information - www.FortMyers-Sanibel.com
 Lee County Parks & Recreation - www.leeparks.org
 Statewide Trails - <http://www.dep.state.fl.us/gwt/paddling/saltwater.htm>

Play It Safe

- Use caution at passes; strong currents exist.
- Watch for motorboats; stay to the right and turn your bow into the wake.
- Secure your car and take keys with you.
- Paddle in a group or with a buddy.
- Let someone know your plans – where you are going and when you plan to be back.
- Be careful with campfires; use cook stoves whenever possible.
- Access to private land should be by invitation only.
- Make mental notes as you pass trail markers – knowing the number of the closest marker will help emergency personnel should you need assistance.

Navigation

The enlarged map of the Caloosahatchee River shows tributaries that are suggested routes and destinations for canoeists and kayakers. There is no marked trail on the river itself, so explore as you please. But it's advisable for paddlers to avoid the powerboat channel. Also provided here are Global Positioning System (GPS) coordinates for the mouth of each tributary as well as put-in spots and other land-accessible locations of interest to paddlers. For a complete list of GPS coordinates, you can also go online to www.calusablueway.com

Unlike the Estero Bay (Phase 1) and Pine Island Sound (Phase 2) legs of the blueway, on-water markers are not used on the Caloosahatchee (Phase 3). However, you will see Great Calusa Blueway Paddling Trail Access signs at various shore-access points. These signs serve to let paddlers know they are at a location that is also listed on the map and Web site.

Please note that creeks along the trail may be inaccessible during periods of low rainfall and/or extreme low tide. Note that as you traverse the river, you may have to cross the powerboat channel, which is busy and used by recreational and commercial vessels. Please paddle safely.

For a Boater's Guide with additional navigation information follow the online link at <http://LeeWaterways.com>.

As you explore the Great Calusa Blueway, we remind you to preserve this paddling paradise by leaving nothing behind and taking only photos.

The Great Calusa Blueway

Phases 1 & 2:	
Miles of marked trail.....	97
Phase 3:	
Miles of tributaries.....	52
Miles of river.....	38

For more information, visit www.CalusaBlueway.com



For paddling opportunities in Collier County visit:
www.paradisecoastblueway.com

Caloosahatchee River Canal Resource Group (8LL02586)

Contents:

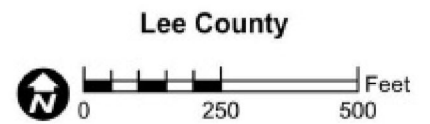
Caloosahatchee River Canal Section 4(f) Resource map

Concurrence Letter_441942-1 SHPO Transmittal_MKW_AM_KLC



Figure 26d: Identified Historic Resources (Map 4 of 5)

- | | |
|--|---|
|  Historic Resources APE |  Newly Recorded Historic Resource |
|  Historic Linear Resource |  Previously Recorded Historic Resource |
|  Historic Canal | |





Florida Department of Transportation

RON DESANTIS
GOVERNOR

801 N Broadway Ave
Bartow, FL 33830

JARED W. PERDUE, P.E.
SECRETARY

June 26, 2023

Ms. Alissa S. Lotane, Director
Florida Division of Historical Resources
Florida Department of State
R.A. Gray Building
500 South Bronough Street
Tallahassee, FL 32399-0250

Attn: Transportation Compliance Review Program

**RE: Cultural Resources Assessment Survey for the State Road (SR) 31 Project Development and Environment (PD&E) Study from SR 80 (Palm Beach Boulevard) to SR 78 (Bayshore Road) Lee County, Florida
Financial Project ID No. 441942-1-22-01
Federal Aid Project No. TBD**

Dear Ms. Lotane:

The Florida Department of Transportation, District One conducted a Cultural Resources Assessment Survey (CRAS) for the State Road (SR) 31 Project Development and Environment (PD&E) Study from SR 80 (Palm Beach Boulevard) to SR 78 (Bayshore Road) in Lee County, Florida. The objective of the survey was to identify cultural resources within the project area of potential effects (APE) and assess the resources in terms of their eligibility for listing in the *National Register of Historic Places* (National Register) according to the criteria set forth in 36 CFR Section 60.4.

This assessment complies with Section 106 of the National Historic Preservation Act (NHPA) of 1966 (Public Law 89-665, as amended), as implemented by 36 CFR 800 -- Protection of Historic Properties (incorporating amendments effective August 5, 2004); Stipulation VII of the *Programmatic Agreement among the Federal Highway Administration (FHWA), the Advisory Council on Historic Preservation (ACHP), the Florida Division of Historical Resources (FDHR), the State Historic Preservation Officer (SHPO), and the FDOT Regarding Implementation of the Federal-Aid Highway Program in Florida* (Section 106 Programmatic Agreement, effective March 2016, amended June 7, 2017); Section 102 of the National Environmental Policy Act (NEPA) of 1969, as amended (42 USC 4321 et seq.), as implemented by the regulations of the Council on Environmental Quality (CEQ) (40 CFR Parts 1500–1508); Section 4(f) of the Department of Transportation Act of 1966, as amended (49 USC 303 and 23 USC 138); the revised Chapter 267, *Florida Statutes (F.S.)*; and the standards embodied in the FDHR's *Cultural Resource Management Standards and Operational Manual* (February 2003), and Chapter 1A-46 (*Archaeological and Historical Report Standards and Guidelines*), *Florida Administrative Code*. In addition, this report was prepared in conformity with standards set forth in Part 2, Chapter 8 (*Archaeological and Historical Resources*) of the *FDOT Project Development and Environment Manual* (effective July 1, 2020).

Ms. Alissa S. Lotane, Director
SR 31 PD&E from SR 78 to SR 80
Lee County, Florida
Financial Project ID: 441942-1-22-01
June 26, 2023
Page 2 of 4

The Preferred Alternative includes a combination of widening existing SR 31 from SR 80 for about 0.7 miles, then shifting 300 feet east prior to the Wilson Pigott Bridge to minimize impacts to the existing Florida Gas Transmission (FGT) line. The project would tie into the proposed SR 31 project at the northern terminus. The Preferred Alternative raises the profile above the current 100-year floodplain. The profile will be raised approximately three feet above existing SR 31 due to the updated 100-year floodplain elevation (from seven feet to ten feet) in the project corridor. A new high-level fixed bridge would be constructed to replace the existing Wilson Pigott Bridge. The proposed bridge will meet United States Coast Guard (USCG) vertical clearance requirements for a high-level fixed bridge. The Preferred Alternative also includes reconfiguring the existing intersection of SR 31/SR 80 to a grade-separated intersection. The grade-separation would introduce two new flyover bridges for SR 31 and SR 80 movements and would also include a new signal on SR 31.

Stormwater runoff from the project would be collected and conveyed in closed drainage systems to one proposed offsite pond for water quality treatment and attenuation per state and federal requirements. The pond would discharge at or near the same outfall ditch that conveys the roadway runoff in the existing condition. An additional 13.5 acres of right-of-way (ROW) would be required for the proposed pond and associated access easements.

The project APE was established in accordance with 36 CFR 800.16(d). The archaeological APE included the footprint of the existing and proposed ROW containing the proposed improvements. It also included a stormwater management facility (Pond 1E) and its two associated outfalls, as well as several small areas where the proposed roadway improvements extend outside of the existing/proposed ROW.

The historic resources APE varied depending on the nature of the improvements. Where the improvements were minor or limited (i.e., improvements like milling and resurfacing, pavement marking, etc. within existing ROW), the historic resources APE consisted of the existing ROW containing the proposed improvements and the small areas where the improvements extended outside of the existing/proposed ROW. The historic resources APE expanded in areas of proposed ROW and roadway widening to the footprint of the existing and proposed ROW containing the proposed improvements, as well as adjacent parcels/resources for a distance of up to 150 feet from the edge of the existing/proposed ROW. The historic resources APE also expanded in the area of the newly proposed roadway alignment to the footprint of the existing and proposed ROW containing the proposed improvements, as well as a buffer of 250 feet from the edge of the associated existing/proposed ROW. In addition, the historic resources APE expanded out 250 feet from the footprint of the proposed flyovers and 500 feet from the footprint of the proposed high-level bridge. The historic resources APE for Pond 1E included the footprint of the pond and a buffer of 150 feet. The APE for the outfalls was limited to their footprints.

Much of the archaeological APE is within areas of existing and proposed ROW that have been previously surveyed for archaeological resources (Florida Master Site File [FMSF] Manuscript Nos. 20161, 27269, 12279, and 2165). No archaeological sites were recorded within or adjacent to the current APE during the prior survey efforts and the SHPO concurred with these findings. The current survey also identified no archaeological sites or archaeological occurrences within the APE.

The CRAS identified six historic resources within the APE. Four of these were previously recorded (8LL1898, 8LL2586, 8LL2615, and 8LL2845) and two were newly recorded (8LL2948 and 8LL2949). The Caloosahatchee River Canal (8LL1898) was determined eligible for the National Register by the SHPO in 2012 under Criterion A for its association with late-19th-Century efforts to drain the Everglades and the

Ms. Alissa S. Lotane, Director
SR 31 PD&E from SR 78 to SR 80
Lee County, Florida
Financial Project ID: 441942-1-22-01
June 26, 2023
Page 3 of 4

agricultural development of South Florida. The Seaboard Air Line Railroad Grade (8LL2586) and Wilson Pigott Bridge (8LL2615) have been determined ineligible by the SHPO. SR 31 (8LL2845) was previously determined ineligible outside of the APE. The section within the current APE exhibits modern improvements and lacks historic associations. It is considered ineligible for the National Register. The two newly recorded structures include 16400 SR 31 (8LL2948) and the Sweetwater Landing Marina (8LL2949). The structures exhibit common architectural styles in South Florida and lack historical associations. Therefore, they are considered ineligible for the National Register.

As noted, a new bridge will be constructed east of the current bridge, which will be removed. The new bridge will cross over the National Register-eligible Caloosahatchee River Canal (8LL1898). As part of these improvements, the new bridge construction will include new supports/concrete piers within the Caloosahatchee River Canal and rip rap will be installed immediately adjacent to the bridge ends at the shoreline. Based on these improvements, there will be no adverse effects on the Caloosahatchee River Canal and the linear resource will remain eligible for inclusion in the National Register due to its importance to drainage of the Everglades. The improvements will not involve changes that would compromise the integrity of the canal, such as rerouting, cutting off or filling in, widening, severing from other waterways, change of function, or removal of ancillary structures or features that contribute to its significance.

This information is being provided in accordance with the provisions of the National Historic Preservation Act of 1966 (as amended), which are implemented by the procedures contained in 36 CFR, Part 800, as well as the provisions contained in the revised Chapter 267, *F.S.*

The environmental review, consultation, and other actions required by applicable federal environmental laws for this project are being, or have been, carried out by the FDOT pursuant to 23 U.S.C. § 327 and a Memorandum of Understanding dated May 26, 2022 and executed by the FHWA and FDOT.

The CRAS report is provided for your review and comment. If you have any questions or if I may be of assistance, please contact me at (954) 336-3625 or matthew.marino@dot.state.fl.us.

Sincerely,



Matt Marino, M.A., RPA
Cultural Resource Coordinator

CC: Jeffrey James, FDOT District 1
Patrick Bateman, FDOT District 1
Lindsay Rothrock, FDOT OEM

Ms. Alissa S. Lotane, Director
SR 31 PD&E from SR 78 to SR 80
Lee County, Florida
Financial Project ID: 441942-1-22-01
June 26, 2023
Page 4 of 4

The Florida State Historic Preservation Officer (SHPO) finds the attached Cultural Resources Assessment Survey Report complete and sufficient and concurs/ does not concur with the recommendations and findings provided in this cover letter for SHPO/FDHR Project File Number 202304024. Or, the SHPO finds the attached document contains insufficient information.

In accordance with the Programmatic Agreement among the FHWA, ACHP, FDHR, SHPO, and FDOT Regarding Implementation of the Federal-Aid Highway Program in Florida, if providing concurrence with a finding of No Historic Properties Affected for a project as a whole, or to No Adverse Effect on a specific historic property, SHPO shall presume that FHWA will proceed with a de minimis Section 4(f) finding at its discretion for the use of land from the historic property.

SHPO Comments:

Kelly L Chase
for

Alissa S. Lotane, Director
State Historic Preservation Officer
Florida Division of Historical Resources

7.24.2023
Date