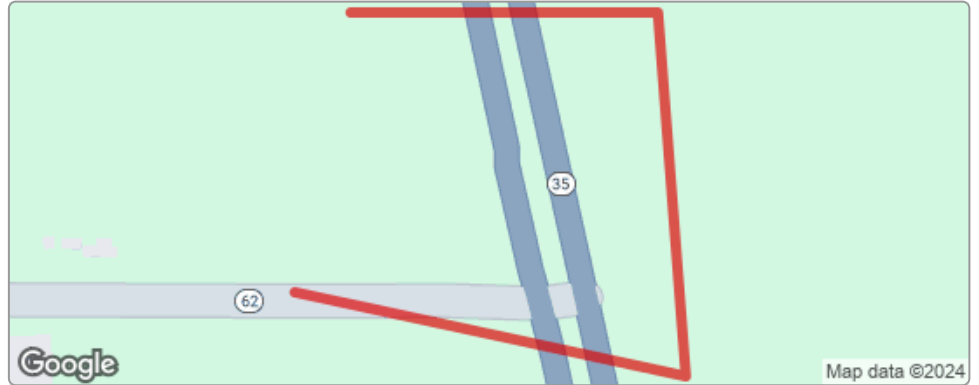




US 17 (SR 35) AT SR 62 - Traffic Signal 454456-1

| Project Details | |
|--------------------------|----------------------------|
| Work Type | Traffic Signal Maintenance |
| Phase | Design |
| Limits | 17.92 to 17.93 |
| Length | 0.01 miles |
| County | Hardee |
| Road | SR 62 US 17 |
| Construction Cost | \$1,461,635.33 |



| Contact Information | |
|-------------------------------|--|
| Design Project Manager | Samuel Berkman (863) 519-2317 Samuel.Berkman@dot.state.fl.us |