

**CULTURAL RESOURCE ASSESSMENT SURVEY  
TECHNICAL MEMORANDUM**

**STATE ROAD (SR) 31  
STATE ENVIRONMENTAL IMPACT REPORT (SEIR)  
FROM COUNTY ROAD (CR) 78 TO NORTH OF COOK BROWN ROAD  
LEE AND CHARLOTTE COUNTIES, FLORIDA**

**Financial Project ID No.: 428917-2-21-01  
ETDM: 9651**

Prepared for:



Florida Department of Transportation  
District One  
801 North Broadway Avenue  
Bartow, Florida 33830

*The environmental review, consultation, and other actions required by applicable federal environmental laws for this project are being, or have been, carried out by the Florida Department of Transportation (FDOT) pursuant to 23 U.S.C. §327 and a Memorandum of Understanding (MOU) dated December 14, 2016 and executed by the Federal Highway Administration and FDOT.*

**December 2020**

**CULTURAL RESOURCE ASSESSMENT SURVEY  
TECHNICAL MEMORANDUM**

**STATE ROAD (SR) 31  
STATE ENVIRONMENTAL IMPACT REPORT (SEIR)  
FROM COUNTY ROAD (CR) 78 TO NORTH OF COOK BROWN ROAD  
LEE AND CHARLOTTE COUNTIES, FLORIDA**

**Financial Project ID No.: 428917-2-21-01  
ETDM: 9651**

Prepared for:



Florida Department of Transportation  
District One  
801 North Broadway Avenue  
Bartow, Florida 33830

On Behalf Of:

Inwood Consulting Engineers  
3000 Dovera Drive, Suite 200  
Oviedo, Florida 32765

Prepared by:

Archaeological Consultants, Inc.  
8110 Blaikie Court, Suite A  
Sarasota, Florida 34240

**December 2020**

## TABLE OF CONTENTS

1.0	INTRODUCTION .....	1
2.0	PROJECT DESCRIPTION.....	3
3.0	ENVIRONMENTAL SETTING .....	4
4.0	HISTORIC OVERVIEW.....	7
5.0	BACKGROUND RESEARCH & CONSIDERATIONS.....	9
6.0	STUDY METHODOLOGY .....	11
7.0	INADVERTENT/UNANTICIPATED DISCOVERY OF CULTURAL REMAINS.....	11
8.0	LABORATORY METHODS AND CURATION.....	12
9.0	SURVEY RESULTS .....	12
10.0	CONCLUSIONS .....	20
11.0	BIBLIOGRAPHY.....	20
APPENDIX A: Florida Master Site File Forms		
APPENDIX B: Survey Log		

### **Figures**

Figure 1.	Location of the SR 31 improvements. ....	2
Figure 2.	Soil type distribution within the APE. ....	5
Figure 3.	1944 and 1994 aerial photographs showing development of the project location. ....	8
Figure 4.	Environmental setting and previously recorded cultural resources within one mile of the project location.....	10
Figure 5.	Location of shovel tests and historic resources within the APE. ....	13
Figure 6.	Location of shovel tests and historic resources within the APE. ....	14

### **Tables**

Table 1.	Historic resources recorded within the APE. ....	15
----------	--	----

### **Photos**

Photo 1.	Looking north, along the west side of SR 31 towards Busbee Lane.....	4
Photo 2.	Northeast view along the east side of SR 31.....	6
Photo 3.	Vacant area along the west side of SR 31, south of Babcock. ....	6
Photo 4.	Typical test pit stratigraphy.....	12
Photo 5.	Photograph of SR 31 in Lee County looking south (Typ). ....	16
Photo 6.	19411 SR 31 (8LL02728), looking southwest. ....	17
Photo 7.	11901 Shirley Lane (8LL02729), looking north. ....	17
Photo 8.	20231 SR 31 (8LL02730), looking west.....	18
Photo 9.	41900 Little Farm Road (8CH02720), looking north. ....	19
Photo 10.	12931 SR 31 (8CH02721), looking west. ....	19

## 1.0 INTRODUCTION

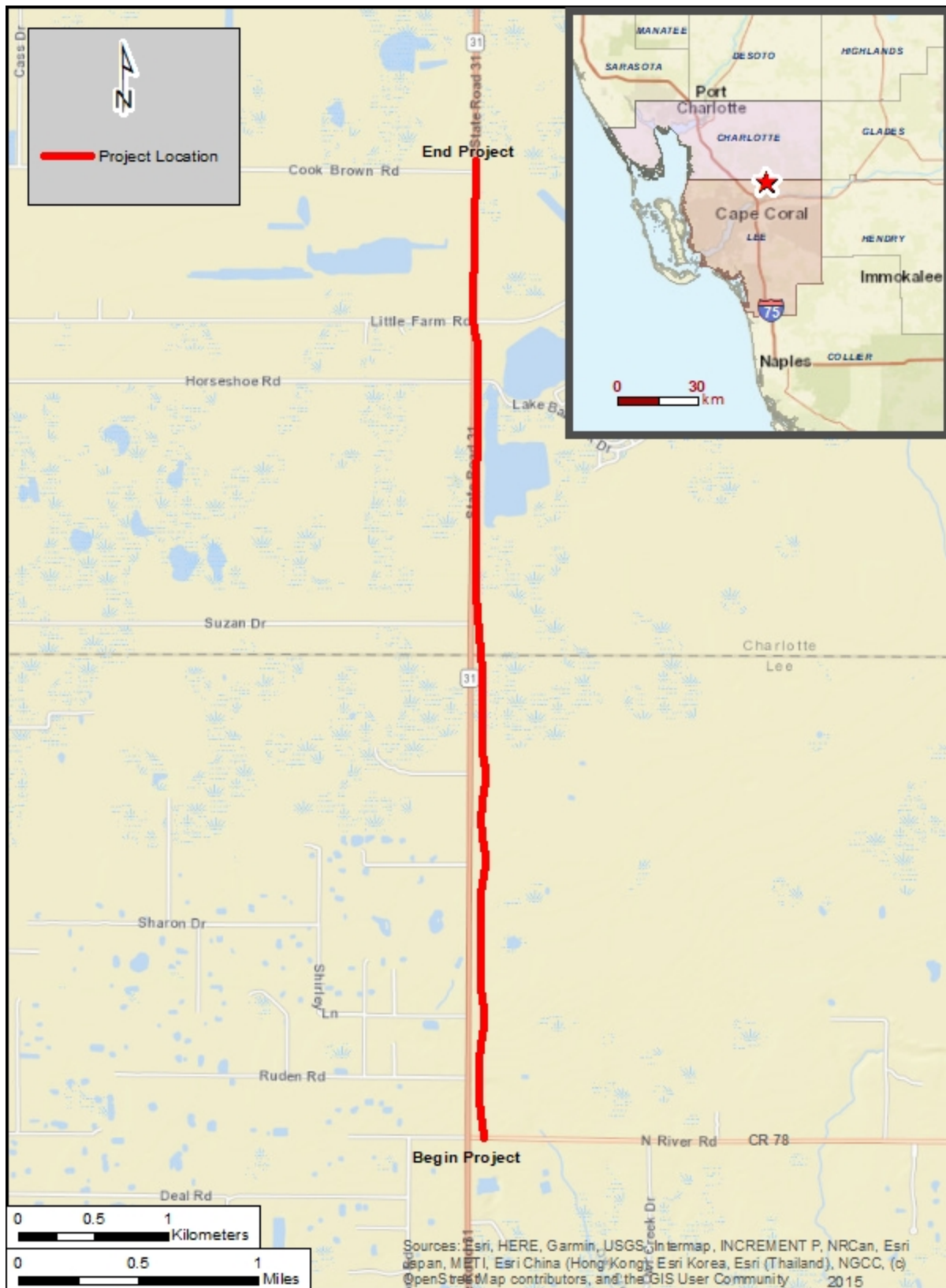
The Florida Department of Transportation (FDOT), District One, is conducting a Project Development and Environment (PD&E) Study for the proposed improvements to State Road (SR) 31 from south of County Road (CR) 78 (N River Road) in Lee County to Cook Brown Road in Charlotte County (**Figure 1**). The total project length is approximately 4.2 miles. The proposed action includes providing six lanes for SR 31 from CR 78 (N River Road) to Cypress Parkway and four lanes from Cypress Parkway to Cook Brown Road. The project was evaluated through FDOT's Efficient Transportation Decision Making (ETDM) process as project No. 9651. This is a state funded project.

Archaeological Consultants, Inc. (ACI) performed a Cultural Resource Assessment Survey (CRAS) update to the *Cultural Resource Assessment Survey SR 31 from the Lee County Line to CR 74, Charlotte County, Florida* prepared in May 2004 by ACI (Survey No. 10179). No historic resources were identified within the Area of Potential Effects (APE) and the State Historic Preservation Officer (SHPO) concurred with the findings on July 12 (Gaske 2004). The purpose of this survey was to locate and identify any cultural resources within the APE and to assess their significance in terms of eligibility for listing in the National Register of Historic Places (NRHP). As defined in 36 CFR Part § 800.16(d), the APE is the “geographic area or areas within which an undertaking may directly or indirectly cause alterations in the character or use of historic properties, if any such properties exist.” The archaeological APE is defined as the footprint of the existing and proposed SR 31 right-of-way (ROW). The historic APE includes the existing ROW and immediately adjacent parcels as contained within 400-feet (ft) from the edge of existing and proposed ROW. The archaeological and historical/architectural field surveys were conducted in October 2020.

All work was conducted in accordance with Section 106 of the *National Historic Preservation Act* of 1966, as amended by Public Law 89-665; the *Archaeological and Historic Preservation Act*, as amended by Public Law 93-291; Executive Order 11593; and Chapter 267, *Florida Statutes (FS)*. All work was carried out in conformity with Part 2, Chapter 8 (“Archaeological and Historical Resources”) of the FDOT's *Project Development and Environment (PD&E) Manual* (FDOT 2020), and the Florida Division of Historical Resources' (FDHR) standards contained in the *Cultural Resource Management Standards and Operational Manual* (FDHR 2003), as well as with the provisions contained in the Chapter 1A-46, *Florida Administrative Code (FAC)*. Principal Investigators meet the *Secretary of the Interior's Historic Preservation Professional Qualification Standards* (48 FR 44716) for archaeology, history, architecture, architectural history, or historic architecture.

Archaeological background research revealed no prehistoric archaeological sites had been recorded within the APE however three aboriginal midden type sites are located approximately 1.5 miles southeast of the southern portion of the APE. As a result of the field survey, no historic or prehistoric archaeological sites were found.

Historic background research included a review of the FMSF and the NRHP indicated that four historic resources (8LL02582, 8LL02583, 8LL02584, 8CH02159) were previously recorded within the project APE. These include one Frame Vernacular style building (8LL02582) and two Ranch style buildings (8LL02583 and 8LL02584) that were determined as ineligible for listing in the NRHP by the SHPO. In addition, one linear resource, SR 31 (8CH02159), was previously recorded within the APE in Charlotte County and has not been evaluated by the SHPO; however, the segment within Lee County has not been previously recorded. A review of the relevant United States Geological Survey (USGS) quadrangle map, historic aerial photographs, and the Lee and Charlotte County property appraiser's website data revealed the potential for six historic resources, 47 years of age or older (constructed 1973 or earlier) within the project APE (Wilkinson 2020; Polk 2020).



The historical/architectural field survey resulted in the identification and evaluation of six new historic resources (8LL02845, 8LL02728, 8LL02729, 8LL02730, 8CH02720, 8CH02721); and the identification and reevaluation of one previously recorded historic resource (8CH02159) within the APE. These include three Masonry Vernacular style buildings (8CH02728, 8CH02729, 8CH02730), one building with no style (8CH02721), and one Industrial Vernacular style (8CH02720) building, as well as linear resource, SR 31 in Lee and Charlotte Counties (8LL02845 and 8CH02159, respectively). These resources are common examples of their respective architectural styles without significant historical associations; therefore, none appear eligible for listing in the NRHP, either individually or as part of a historic district. Based on the background research and results of the field survey, no cultural resources that are listed, eligible for listing, or that appear potentially eligible for listing in the NRHP were located within the APE. Therefore, it is the professional opinion of ACI that the proposed undertaking will have no involvement with cultural resources.

## **2.0 PROJECT DESCRIPTION**

The preferred alternative includes providing six lanes for SR 31 from CR 78 (N River Road) to Cypress Parkway and four lanes from Cypress Parkway to Cook Brown Road. The primary purpose of this project is to increase capacity on SR 31 from CR 78 (N River Road) to Cook Brown Road in order to accommodate the anticipated growth in traffic associated primarily with the Babcock Ranch Community. Secondary goals of the project are to increase emergency evacuation capabilities in northern Lee and southern Charlotte Counties by providing a facility capable of handling evacuation of future residents and workers; to enhance system linkage connecting freight and personal vehicle traffic to the roadway network in northern Lee and southern Charlotte Counties; and to improve modal interrelationships by providing bicycle and pedestrian facilities to link the Babcock Ranch development with existing development.

The preferred alternative includes construction of a new six-lane divided roadway from CR 78 (N River Road) to Cypress Parkway. This section is located on a new alignment east of the existing SR 31 roadway and the 50-foot wide Florida Gas Transmission pipeline easement. From Cypress Parkway to Cook Brown Road, the roadway shifts back to the west and is reduced to a four-lane divided facility. The four-lane divided roadway will use a combination of the existing SR 31 roadway ROW and new ROW. The existing two-lane undivided section of SR 31 will remain in place from north of CR 78 (N River Road) to south of Cypress Parkway and will serve as a frontage road for local access. A separate project will relocate the existing Florida Gas Transmission easement from the east side to the west side of SR 31 from just north of the Lee/Charlotte County Line to just north of Horseshoe Road. From just north of Horseshoe Road, the gas line will transition back to the east side of the road and connect with the existing easement.

The typical section from CR 78 (N River Road) to Cypress Parkway includes three, 11-foot travel lanes in each direction separated by a 22-foot median with Type F curb along the inside and outside lanes. A 12-foot wide shared-use path is proposed along both sides of the roadway. Between CR 78 (N River Road) and the Lee/Charlotte County Line, approximately 208 ft of ROW is required. It should be noted that from Lee/Charlotte County Line northward, the shared-use path on the east side will be 10 ft wide and located outside of the proposed roadway ROW on the Chain of Lakes berm. Approximately 192 ft of ROW is needed from the Lee/Charlotte County Line to Cypress Parkway.

From Cypress Parkway to Horseshoe Road, the proposed typical section includes two, 11-foot travel lanes in each direction separated by a 22-foot median. Type F curb will be placed along the median and along the outside travel lanes. Approximately 107 ft of additional ROW is needed along the east side of SR 31 for a total width of 207 ft. Through this section, the Florida Gas Transmission gas line will be relocated to the west side of the existing SR 31 ROW. This typical section includes dual ditches and a 12-foot shared-use path along the west side of the road. A 10-foot shared-use path will also be provided along the east side of the road, outside the roadway ROW on the Chain of Lakes berm on Babcock Ranch property.

Between Horseshoe Road and Cook Brown Road, the alignment involves widening to the west, which will require an additional 107 ft to the west of the existing SR 31 ROW, for a total roadway ROW width of 207 ft. The same roadway elements will be provided along this section of the roadway as are provided for the segment discussed above. The existing Florida Gas Transmission gas line will remain within the existing 50-foot easement along the east side of SR 31.

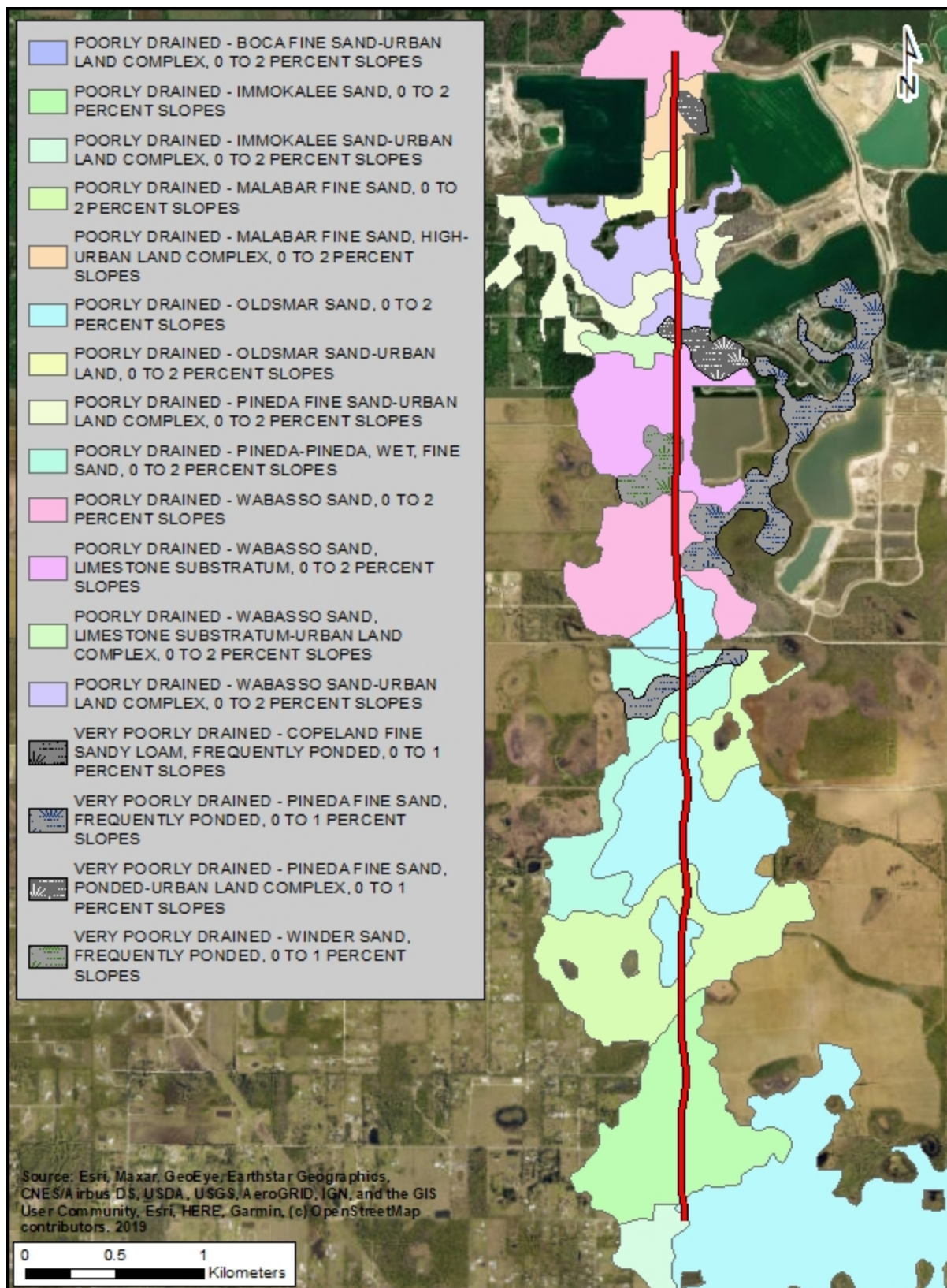
### 3.0 ENVIRONMENTAL SETTING

The APE is located in Sections 1, 6, 7, 12, 26, 30, 31, and 36 on the boundary line between Ranges 25 and 26 East, of Township 42 and 43 South in Lee and Charlotte County, Florida (United States Geological Survey [USGS] 1957, 1958). The APE is situated on three soil associations. The Wabasso-Pineda-Bocca association includes nearly level, poorly drained soils of the flatwoods and sloughs; the Oldsmar-Malabar-Immokalee association soils which are characteristic of flatwoods and sloughs and are in areas that are nearly level and poorly drained; and the Isles-Boca-Pompano is a nearly level, poorly drained soil found in swamps and depressions (USDA 1984a, 1984b). The soils specific to the project area are detailed in **Figure 2**.

Presently, the project APE consists mainly of vacant land interspersed with pasture, some commercial development, and limited residential development. Disturbances noted included construction and improvements of SR 31, ditches, utilities, and standing water (**Photos 1-3**).



**Photo 1.** Looking north, along the west side of SR 31 towards Busbee Lane.



**Figure 2.** Soil type distribution within the APE.



**Photo 2.** Northeast view along the east side of SR 31.



**Photo 3.** Vacant area along the west side of SR 31, south of Babcock.

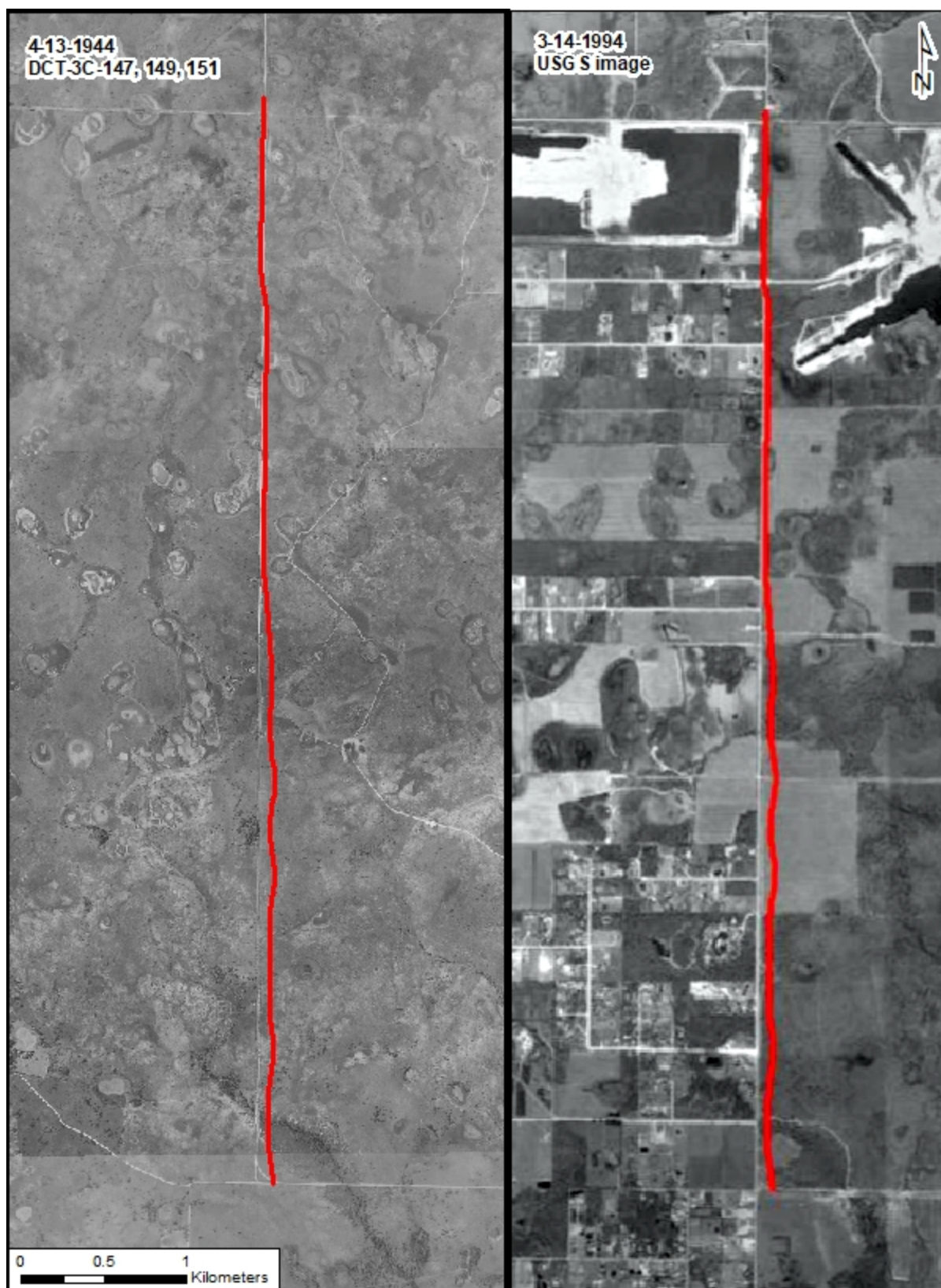
## 4.0 HISTORIC OVERVIEW

On April 23, 1921, Charlotte County was carved out of DeSoto County to the north of Lee County, and Punta Gorda became the county seat. Road construction, tourism, and real estate prices expanded. Early roads in the area were few and primitive; however, transportation routes were gradually improved following the creation of the Florida State Road Department in 1915. Less than a decade later, the department published statewide standards for roads and bridges in 1922 (HPA 1989; Survey No. 02056). State Road 2, one of the routes within the newly established state road system, was under construction through eastern Charlotte County by 1923 in order to connect the existing terminus in Arcadia with Fort Myers (News-Press 1923).

Despite the boom elsewhere in the state – including Lee County – the population of Charlotte County stood at 3390 in 1925. In Charlotte County, only 816 hotel rooms were available to the local tourist industry, while 4000 rooms were counted in Sarasota and Lee counties. Charlotte County's economic centers in 1923 were Punta Gorda, which served mainly the tourist industry; Cleveland, with a marine railway dock for transporting yachts by railroad; and Murdock, located near the naval stores industry (HPA 1989). Fort Myers remained the economic center of Lee County with the real estate boom, tourism and retirement industries, and the creation of the Tamiami Trail spanning from Fort Myers to Miami (SEARCH 2012). Real estate development was also present outside of these economic centers during the land boom, including the rural area of eastern Charlotte County. Several subdivisions were platted in the vicinity of SR 31 and CR 74, including Del Verde, Dixie Estates, and Bermont Villas (Lane 1973). Interest, however, was quickly extinguished by the collapse of the real estate market.

Floridians had hardly recovered from the Florida land bust when, in October 1929, the stock market began to collapse, leading into the Great Depression. Between 1929 and 1933, 148 state and national banks in Florida failed. Charlotte County, like elsewhere, experienced a decline in population. However, by 1936, the construction of many new roads (e.g., SR 31, 35, 74, 771, 775, and 776) served to open up the county. In addition to increasing accessibility throughout Charlotte County, construction projects aided Lee County's financial recovery following the Great Depression. Many projects were undertaken and provided employment through federal programs such as the Works Progress Administration (WPA), Civilian Works Administration, and the Federal Emergency Relief Association (SEARCH 2012). Agriculture and citrus production, tourism, commercial fishing, and the railroad were the major economic sources of income in Charlotte and Lee County. During World War II, Lee County was also important as a training location for the US Army Airforce due to the presence of Page Field and Buckingham Army Airfield (SEARCH 2012).

Despite the increase in development following World War II, eastern Charlotte and Lee Counties remained largely rural (**Figure 3**). Large sections of timber land associated with Crescent B. Ranch were utilized as a working cattle ranch; however, beginning in the early 1940s, this land was managed under a public/private partnership. An early participant in the timber industry of the region was E.V. Babcock. Babcock organized the Babcock Carrier Florida Company and began acquiring large stands of timber in eastern Charlotte County and northeastern Lee County in 1919. The land owned by the company would later be known as the Babcock Crescent B Ranch (Johnson Engineering, Inc. 2005). In addition, approximately 50,000 acres of Babcock land was conveyed to the State of Florida during the early 1940s and is now the Babcock-Webb Management Area (Johnson Engineering, Inc. 2005). The Babcock Ranch Preserve was purchased by the State of Florida in 2006 in order to sustain the land as “a working ranch and timbering and eco-tourism operation” while protecting regional water sources, habitats, and cultural resources in southwest Florida (FWC n.d.). A portion of the Crescent B Ranch land also became Babcock Ranch – an 18,000-acre planned residential community with commercial spaces considered to be “the nation’s first solar-powered town” (Zeitlin 2019).



**Figure 3.** 1944 and 1994 aerial photographs showing development of the project location.

In addition to timber and ranching, land south of Cook Brown Road was purchased by Charlotte Rock Industries in 1982 for use as a lime rock quarry (Williams 1982) (**Figure 3**). Lime rock excavated from the quarry was utilized for building materials and the quarry remains in use today despite issues regarding rock blasting with the ca. 1970s residences to the south on Little Farm Road and Horseshoe Road.

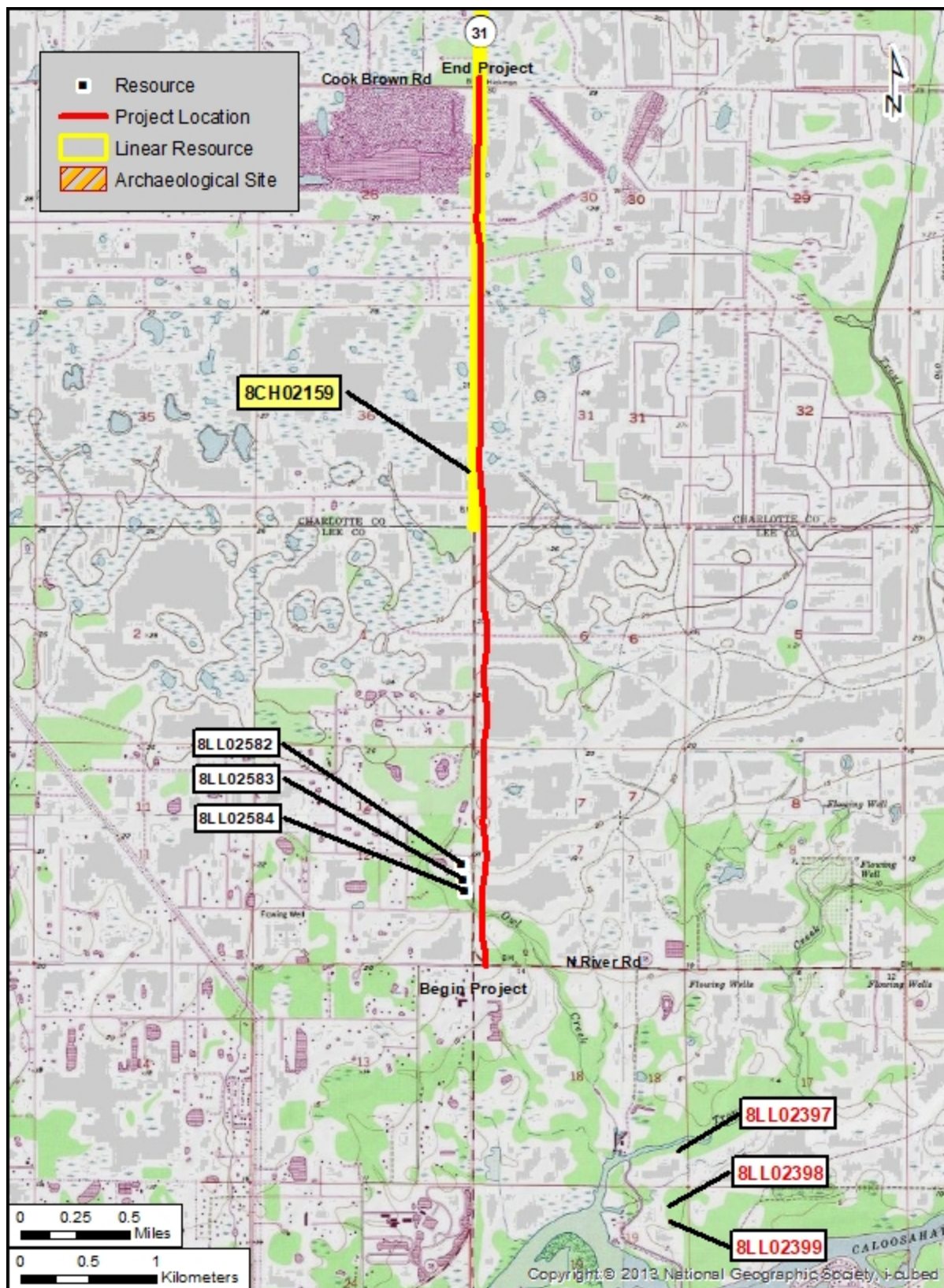
## 5.0 BACKGROUND RESEARCH & CONSIDERATIONS

The field survey was preceded by background research, which included a comprehensive review of archaeological and historical literature, records and other documents and data pertaining to the project area. This research was conducted to ascertain the types of cultural resources known in the project area and vicinity, their cultural affiliations, site location information, and other relevant data. This included a review of sites listed in the NRHP, the Florida Master Site File (FMSF), cultural resource survey reports, published books and articles, maps, historic aerials, a review of the Tuckers Corner and Fort Myers quadrangle maps (USGS 1957, 1958), the Lee and Charlotte County Property Appraisers, and information from the files of ACI. The FMSF data used in this report were initially obtained in September 2020.

A number of surveys have been conducted within the APE. These include surveys conducted for the Southwest Florida Pipeline (Estabrook 1991: Survey No. 3014); the Florida Gas Transmission (Allen 1999: Survey No. 5699); Florida Department of Transportation (ACI 2004: Survey No. 10179); Babcock Ranch (ACI 2006: Survey No. 14057, 2019: Survey No. 26038), and a Phase II survey of Charlotte County was conducted for Charlotte County Board of County Commissioners (Environmental Services, Inc. [ESI] 2008: Survey No. 16444). Additional surveys have been conducted in Lee County for Bonita Bay Properties, Inc. (Beriault 2007: Survey No. 15456), Envirodesign Associates, Inc. (Ambrosino 2003: Survey No. 8646), and the Florida Department of Transportation District One (SEARCH 2012: Survey No. 20161).

**Archaeological** background research revealed no prehistoric archaeological sites had been recorded within the APE however three aboriginal midden type sites are located approximately 1.5 miles southeast of the southern portion of the APE (**Figure 4**). These sites are located between Trout Creek and the Caloosahatchee River and were determined potentially eligible for listing in the NRHP by the SHPO (FMSF). But due to the previous work within and adjacent to the APE, the environmental setting of the APE, and the disturbance that has occurred within the APE (fill, utilities, ditches, etc.), the likelihood of finding intact cultural resources was considered very low.

**Historical/architectural** background research included a review of the FMSF and the NRHP indicated that four historic resources (8LL02582, 8LL02583, 8LL02584, 8CH02159) were previously recorded within the project APE. These include one Frame Vernacular style building (8LL02582) and two Ranch style buildings (8LL02583 and 8LL02584) that were recorded during the *Cultural Resource Assessment Survey of State Road 31 from State Road 80 (Palm Beach Boulevard) to North of County Road 78 (North River Road) Lee County, Florida* (SEARCH 2012: Survey No. 20161). In 2012, they were determined ineligible for listing in the NRHP by the SHPO. In addition, one linear resource, SR 31 (8CH02159), was recorded in Charlotte County during the *Phase II of the Survey of Historic Resources, Charlotte County, Florida* (ESI 2008: Survey No. 16444). The segment within the APE has not been evaluated by the SHPO. Furthermore, the segment within Lee County has not been previously recorded. A review of the relevant United States Geological Survey (USGS) quadrangle map, historic aerial photographs, and the Lee and Charlotte County property appraiser's website data revealed the potential for six historic resources, 47 years of age or older (constructed 1973 or earlier) within the project APE (Wilkinson 2020; Polk 2020).



**Figure 4.** Environmental setting and previously recorded cultural resources within one mile of the project location.

## 6.0 STUDY METHODOLOGY

The FDHR's Module Three, *Guidelines for Use by Historic Professionals*, indicates that the first stage of archaeological field survey is a reconnaissance of the project area to "ground truth," or ascertain the validity of the predictive model (FDHR 2003). During this part of the survey, the researcher assesses whether the initial predictive model needs adjustment based on disturbance or conditions such as constructed features (i.e., parking lots, buildings, etc.), underground utilities, landscape alterations (i.e., ditches and swales, mined land, dredged and filled land, agricultural fields), or other constraints that may affect the archaeological potential. Additionally, these Guidelines indicate that non-systematic "judgmental" testing may be appropriate in urbanized environments where pavement, utilities, and constructed features make systematic testing unfeasible; in geographically restricted areas such as proposed pond sites; or within project areas that have limited high and moderate probability zones, but where a larger subsurface testing sample may be desired. While predictive models are useful in determining preliminary testing strategies in a broad context, it is understood that testing intervals may be altered due to conditions encountered by the field crew at the time of survey. A reasonable and good faith effort has been made to document any historic properties located within the project APE (Advisory Council on Historic Preservation n.d.).

**Archaeological** field methodology consisted of surface reconnaissance combined with judgmental subsurface testing during this current survey. Shovel tests were approximately 50 centimeter (cm) in diameter by a meter deep; a few test pits were terminated at shallower depths due to utilities. All soil removed from the tests was screened through a 0.64 cm mesh hardware cloth to maximize the recovery of artifacts. The locations of all shovel tests were recorded with a Trimble Juno 5 GPS data collector, and, following the recording of relevant data such as stratigraphic profile, all test pits were refilled.

**Historical/architectural** field methodology consisted of a field survey of the APE to determine and verify the location of all historic resources (i.e. bridges, roads, cemeteries, buildings, etc.) that are 45 years of age or older (built in or prior to 1975), and to establish if any such resources could be determined eligible for listing in the NRHP. The field survey focused on the assessment of existing conditions for all previously recorded historic resources located within the APE, and the presence of unrecorded historic resources within the project area. For each property, photographs were taken, and information needed for the completion of FMSF forms was gathered. In addition to architectural descriptions, each historic resource was reviewed to assess style, historic context, condition, and potential NRHP eligibility. Also, informant interviews would have been conducted, if possible, with knowledgeable persons to obtain site-specific building construction dates and/or possible associations with individuals or events significant to local or regional history.

## 7.0 INADVERTENT/UNANTICIPATED DISCOVERY OF CULTURAL REMAINS

Occasionally, archaeological deposits, subsurface features or unmarked human remains are encountered during the course of development, even though the project area may have previously received a thorough and professionally adequate cultural resources assessment. Such events are rare, but they do occur. In the event that human remains are encountered during the course of development, the procedures outlined in Chapter 872, *FS* must be followed. However, it was not anticipated that such sites would be found during this survey.

In the event such discoveries are made during the development process, all activities in the immediate vicinity of the discovery will be suspended, and a professional archaeologist will be contacted to evaluate the importance of the discovery. The area will be examined by the archaeologist, who, in consultation with staff of the Florida SHPO, will determine if the discovery is significant or potentially significant. In the event the discovery is found to be not significant, the work may immediately resume. If, on the other hand,

the discovery is found to be significant or potentially significant, then development activities in the immediate vicinity of the discovery will continue to be suspended until such time as a mitigation plan, acceptable to SHPO, is developed and implemented. Development activities may then resume within the discovery area, but only when conducted in accordance with the guidelines and conditions of the approved mitigation plan.

## 8.0 LABORATORY METHODS AND CURATION

No artifacts were recovered; thus, no laboratory methods were used. The field notes, maps, photographs, and other project documentation are on file with ACI in Sarasota (P17007) pending transfer to a FDOT approved curatorial facility.

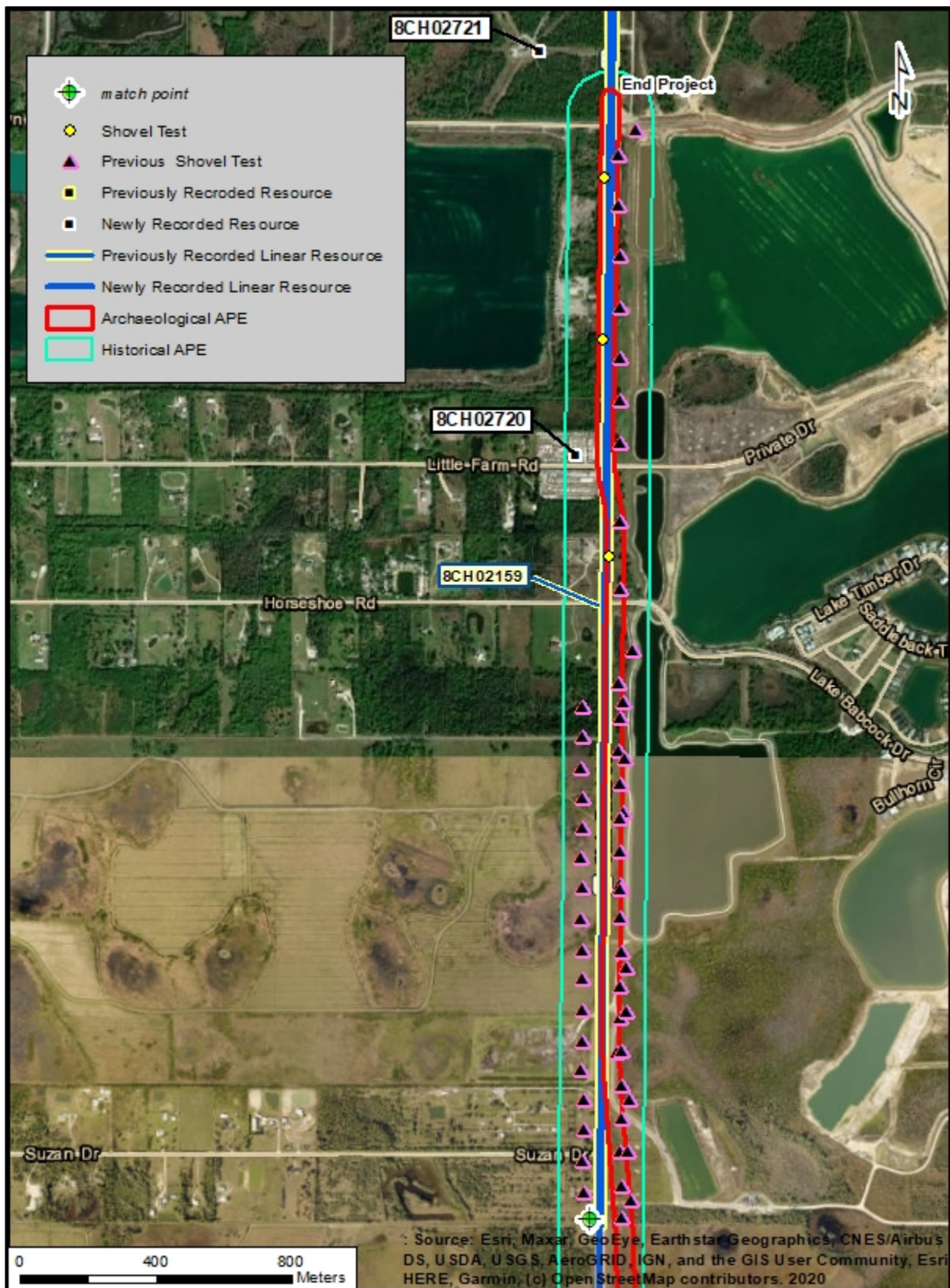
## 9.0 SURVEY RESULTS

**Archaeological field survey** consisted of a surface reconnaissance and judgmental subsurface testing. A total of 22 shovel tests was excavated within the APE during this most recent survey; previous surveys resulted in an additional 79 shovel tests (ACI 2004: Survey No. 10179, 2006: Survey No. 14057, 2019: Survey No. 26038 (**Figures 5 & 6**) within and adjacent to the APE. No cultural materials were recovered from the shovel tests or noted on the surface during any of the surveys. A reasonable and good faith effort was made per the regulations laid out in 36 CFR § 800.4(b)(1) (Advisory Council on Historic Preservation n.d.) to survey all areas of the project APE. The results are in keeping with the research considerations which noted disturbances within the archaeological APE and a general lack of remaining natural environment.

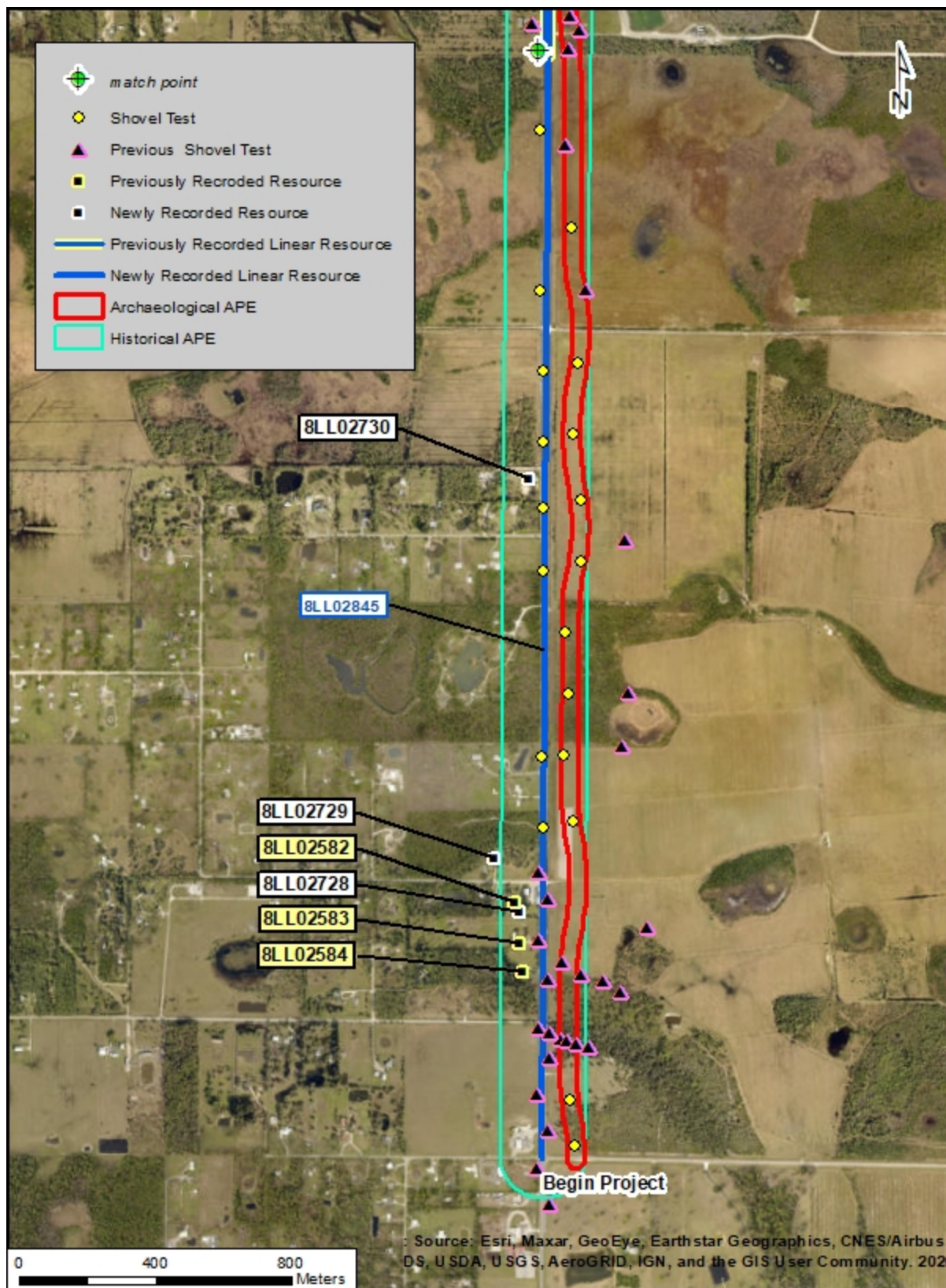
The soil stratigraphy consisted of 0-25 cm of dark grey mottled sand; 25-50 cm of wet, grey/brown sand; and 50-100 cm of light brown sand with water (**Photo 4**). Water was encountered at shallow depths in several test pits.



**Photo 4.** Typical test pit stratigraphy.



**Figure 5.** Location of shovel tests and historic resources within the APE.



**Figure 6.** Location of shovel tests and historic resources within the APE.

**Historical/Architectural Results:** The background research revealed four historic resources (8LL02582, 8LL02583, 8LL02584, 8CH02159) were previously recorded within the project APE. These include one Frame Vernacular style building (8LL02582) and two Ranch style buildings (8LL02583 and 8LL02584) that were determined as ineligible for listing in the NRHP by the SHPO. In addition, one linear resource, SR 31 (8CH02159), was previously recorded within the APE in Charlotte County and has not been evaluated by the SHPO; however, the segment within Lee County has not been previously recorded.

The historical/architectural field survey resulted in the identification and evaluation of six new historic resources (8LL02845, 8LL02728, 8LL02729, 8LL02730, 8CH02720, 8CH02721); and the identification and reevaluation of one previously recorded historic resource (8CH02159) within the APE (**Figures 5 & 6**). These include three Masonry Vernacular style buildings (8CH02728, 8CH02729, 8CH02730), one building with no style (8CH02721), and one Industrial Vernacular style (8CH02720) building, as well as linear resource, SR 31 in Lee and Charlotte Counties (8LL02845 and 8CH02159, respectively). These resources are common examples of their respective architectural styles or were built to basic engineering standards without significant historical associations; therefore, none appear eligible for listing in the NRHP, either individually or as part of a historic district. A description and photographs of the historic resources follows, and a copy of the new and updated FMSF forms are included in **Appendix A**. No informant interviews for the historic resource was conducted during the field survey. A reasonable and good faith effort was made per the regulations laid out in 36 CFR § 800.4(b)(1) (Advisory Council on Historic Preservation n.d.) to survey all areas of the project APE.

**Table 1.** Historic resources recorded within the APE.

<b>FMSF No.</b>	<b>Address/Site Name</b>	<b>Build Date</b>	<b>Style</b>	<b>NRHP Eligibility Recommendation</b>
8LL02845	SR 31	ca. 1917	Linear Resource	Ineligible
*8LL02584	19321 SR 31	ca. 1962	Ranch	Ineligible
*8LL02583	19731 SR 31	ca. 1962	Ranch	Ineligible
8LL02728	19411 SR 31	ca. 1968	Masonry Vernacular	Ineligible
*8LL02582	11950 Shirley Lane	ca. 1960	Frame Vernacular	Ineligible
8LL02729	11901 Shirley Lane	ca. 1962	Masonry Vernacular	Ineligible
8LL02730	20231 SR 31	ca. 1972	Masonry Vernacular	Ineligible
8CH02159	SR 31	ca. 1926	Linear Resource	Ineligible
8CH02720	41900 Little Farm Road	ca. 1972	Industrial Vernacular	Ineligible
8CH02721	12931 SR 31	ca. 1966	No Style	Ineligible

\*Denotes previously recorded resources within the APE evaluated by the SHPO.



**Photo 5.** Photograph of SR 31 in Lee County looking south (Typ).

**8LL02845 & 8CH02159:** Within the APE, SR 31 runs north-south through Lee and Charlotte Counties. The Lee County segment is approximately 2-miles long and is located in Sections 1 and 12 of Township 43 South, Range 25 East; Sections 6 and 7 of Township 43 South, Range 26 East (USGS Tuckers Corner 1957). The Charlotte County segment is approximately 2.2-miles long and is located in Sections 25 and 36 of Township 42 South, Range 25 East; Sections 30 and 31 of Township 42 South, Range 26 East (USGS Tuckers Corner 1957). Both the Lee and Charlotte County segments are comprised of two 12-ft wide travel lanes that have been paved with asphalt and are each two miles long (**Photo 5**). SR 31 – originally known SR 2 – was established by the State Road Department in ca. 1917 as a route connecting the Georgia state line, Orlando, and Fort Myers (State Road Department 1917). By 1923, the route was under construction through eastern Charlotte County in order to connect the existing terminus in Arcadia with Fort Myers to the south (News-Press 1923). Alterations to both segments include grading, widening, and resurfacing. The segments of SR 31 within the APE in Lee and Charlotte Counties are of common design for the state, have undergone alterations in the form of road improvements, and are not of unique design or methods of engineering. In addition, background research did not reveal any historic associations with significant persons and/or events. Therefore, these segments of SR 31 (8LL02845 & 8CH02159) do not appear eligible for listing in the NRHP.



**Photo 6.** 19411 SR 31 (8LL02728), looking southwest.

**8LL02728:** The Masonry Vernacular style building at 19411 SR 31 was constructed ca. 1968 (**Photo 6**). The one-story, irregular plan building rests on a slab foundation of concrete and has concrete walls partially sheathed in stucco, plywood, and vertical plank. The side-gable roof over the principal mass is covered in composition shingles. The main entrance is on the east elevation through a single panel door with an oval window within a partial-width open front porch beneath portion of a low-pitched gable roof. Windows include independent, aluminum, 1/1 SHS, and slider units. There is a 1974 shed located on the west elevation. The building appears to have been reroofed and has new windows and doors. Distinguishing features include wooden gable ends, corner boards, plywood siding. The building is in fair condition and retains some of its original exterior fabric. Overall, it is a typical example of a Masonry Vernacular style residence with alterations and found throughout Lee County and research revealed no significant historical associations. As a result, 8LL02728 does not appear eligible for listing in the NRHP, either individually or as part of a historic district.



**Photo 7.** 11901 Shirley Lane (8LL02729), looking north.

**8LL02729:** The Masonry Vernacular style building at 11901 Shirley Lane was constructed ca. 1962 (**Photo 7**). The one-story, irregular plan building rests on a slab foundation of concrete and has concrete walls

sheathed in stucco. The low-pitched side gable roof over the principal mass is covered in composition shingles. The main entrance is on the south elevation through a single panel door with a center fanlight beneath an extended eave of the gable roof. There is a partial-width open and enclosed porch beneath a shed roof on the north elevation. Windows include independent, aluminum, 1/1 SHS; paired 3-stacked, aluminum, awning; independent, 5-stacked, aluminum, jalousie; and paired 10-stacked, aluminum, jalousie units. The building appears to have been reroofed in 2005 and additions include an open and enclosed porch to the north elevation. There are several property alterations and additions that include a 2012 detached metal garage, 1992 pool and patio, 1987 gazebo, and 1985 detached garage. Distinguishing features include wooden gable ends, low-pitched gable roof. The building is in good condition and retains most of its original exterior fabric. Overall, it is a typical example of a Masonry Vernacular style residence with alterations and found throughout Lee County and research revealed no significant historical associations. As a result, 8LL02729 does not appear eligible for listing in the NRHP, either individually or as part of a historic district.



**Photo 8.** 20231 SR 31 (8LL02730), looking west.

**8LL02730:** The Masonry Vernacular style building at 20231 SR 31 was constructed ca. 1972 (**Photo 8**). The one-story, irregular plan building rests on a slab foundation of concrete and has concrete walls sheathed in stucco. The side-gable roof and hip roof over the principal mass is covered in composition shingles. The main entrance is on the east elevation through a single wooden, panel door with an oval window within a recessed open porch with an arched entryway beneath portion of a hip roof. There is a partial-width open and enclosed porch beneath a flat roof on the west elevation. Windows include independent, 1/1 SHS, and picture units. The building alterations include a new roof and windows, and additions include partial-width open and enclosed porches on the north elevation. Distinguishing features include arched entryway, fixed shutters, and slanted entry wall. The building is in good condition and retains most of its original exterior fabric. Overall, it is a typical example of a Masonry Vernacular style residence with alterations and found throughout Lee County and research revealed no significant historical associations. As a result, 8LL02730 does not appear eligible for listing in the NRHP, either individually or as part of a historic district.



**Photo 9.** 41900 Little Farm Road (8CH02720), looking north.

**8CH02720:** The Industrial Vernacular style building at 41900 Little Farm Road was constructed ca. 1972 (**Photo 9**). The one-story, rectangular plan warehouse rests on a slab foundation of concrete and has metal frame walls. The low-pitched front-gable roof over the principal mass is covered in standing seam sheet metal. The main entrance is on the south elevation through a single metal door. The building does not have any visible windows. Building alterations include new metal siding applied on the east elevation. Distinguishing features include low-pitched gable roof. The building is in fair condition and retains some of its original exterior fabric. Overall, it is a typical example of a basic warehouse with alterations and found throughout Charlotte County and research revealed no significant historical associations. As a result, 8CH02720 does not appear eligible for listing in the NRHP, either individually or as part of a historic district.



**Photo 10.** 12931 SR 31 (8CH02721), looking west.

**8CH02721:** The Wink TV tower, with no style, at 12931 SR 31 was constructed ca. 1966 (**Photo 10**). The one-story, irregular plan building rests on a slab foundation of concrete and has metal frame walls. The gable roof over the principal mass is covered in standing seam sheet metal. The main entrance is unknown

because the property was not accessible due to a security gate. The building does not have any visible windows. Building alterations are unknown; there was a masonry equipment/storage building added in 2006 on the north elevation. Distinguishing features include a carport on the south elevation and a massive TV tower on the east elevation. The building is in good condition and retains most of its original exterior fabric. Overall, it is a typical example of a basic TV station with alterations and found throughout Charlotte County and research revealed no significant historical associations. As a result, 8CH02721 does not appear eligible for listing in the NRHP, either individually or as part of a historic district.

## **10.0 CONCLUSIONS**

Based on the background research and results from the archaeological investigations revealed no historic or prehistoric archaeological sites which are listed, determined eligible, or considered potentially eligible for listing in the NRHP are located within the APE.

As a result of the historic background research and field survey, three previously recorded historic resources (8LL02582, 8LL02583, 8LL02584) within the project APE are still extant and have not received any significant alterations since they were recorded; therefore, these resources were not updated. Furthermore, six historic resources (8LL02845, 8LL02728, 8LL02729, 8LL02730, 8CH02720, 8CH02721) were newly identified, recorded, and evaluated; and one previously recorded historic resource (8CH02159) was identified and updated within the APE. These include three Masonry Vernacular style buildings (8CH02728, 8CH02729, 8CH02730), one building with no style (8CH02721), and one Industrial Vernacular style (8CH02720) building, as well as linear resource, SR 31 in Lee and Charlotte Counties (8LL02845 and 8CH02159, respectively). These resources are common examples of their respective architectural styles or were built to basic engineering standards without significant historical associations; therefore, none appears eligible for listing in the NRHP, either individually or as part of a historic district.

Given the results of background research and field survey, no cultural resources that are listed, eligible for listing, or that appear potentially eligible for listing in the NRHP were located within the APE. Therefore, it is the professional opinion of ACI that the proposed undertaking will have no involvement with cultural resources.

## **11.0 BIBLIOGRAPHY**

Advisory Council on Historic Preservation

- n.d. Meeting the “Reasonable and Good Faith” Identification Standard in Section 106 Review. Accessed at [http://www.achp.gov/docs/reasonable\\_good\\_faith\\_identification.pdf](http://www.achp.gov/docs/reasonable_good_faith_identification.pdf).

Allen, Matthew

- 1999 Cultural Resource Assessment Survey and Evaluation Report of the Florida Gas Transmission Company Phase IV Expansion, Charlotte County, Florida. On file, FDHR, Tallahassee, Survey No. 5699.

Ambrosino, Meghan L.

- 2003 An Archaeological and Historical Survey of the Proposed Lee County Civic Center Tower Location in Lee County, Florida. Panamerican Consultants, Inc., Tampa. Survey No. 8646.

Archaeological Consultants, Inc. (ACI)

- 2004 Cultural Resource Assessment Survey, SR 31 from Lee County Line to CR 74, Charlotte County, Florida. ACI, Sarasota. Survey No. 10179.
- 2006 An Addendum to the Cultural Resources Predictive Model, The Babcock Ranch Community, Charlotte and Lee Counties, Florida. ACI, Sarasota. Survey No. 14057.
- 2019 A Cultural Resource Assessment Survey Babcock Spine roads and Priority Areas, Charlotte and Lee Counties, Florida. ACI, Sarasota. Survey No. 26038.

Beriault, John G.

- 2007 A Phase I Cultural Resource Assessment Survey of the North River Assemblage Parcels, Lee County, Florida. Archaeological and Historical Conservancy, Inc., Davie. Survey No. 15456.

Daughtrey, Rufe

- 1959 "Dolomite Found in Bermont Area; Mining Scheduled." *News-Press*, March 30, 1959. Accessed September 4, 2020. <http://newspapers.com>.

Environmental Services, Inc. (ESI)

- 2008 Phase II Survey of Charlotte County Historic Resources. Environmental Services, Inc., Jacksonville. On file, FDHR, Tallahassee, Survey No. 16444.

Estabrook, Richard

- 1991 Cultural Resource Assessment Survey of the Southwest Florida Pipeline Company Corridor, Hillsborough, Polk, Desoto, Charlotte and Lee Counties, Florida. On file, FDHR, Tallahassee, Survey No. 3014.

Florida Department of Transportation (FDOT)

- 2020 *Project Development and Environmental Manual* Part 2, Chapter 12, "Archaeological and Historical Resources." FDOT, Tallahassee.

Florida Division of Historical Resources (FDHR)

- 2003 *Cultural Resource Management Standards and Operational Manual*. FDHR, Tallahassee.

Florida Fish and Wildlife Conservation Commission (FWC)

- n.d. "Babcock Ranch Preserve." Florida Fish and Wildlife Conservation Commission. Accessed September 3, 2020. <https://myfwc.com/recreation/cooperative/babcock-ranch-preserve/>.

Florida Master Site File (FMSF)

- n.d. Various Florida Site File Forms from the FDHR, Tallahassee.

Gaske, Frederick

- 2004 Survey Concurrence Letter, DHR Project File No.: 2004-6310: A Cultural Resource Assessment Survey, SR 31 from Lee County Line to CR 74, Charlotte County, Florida. ACI, Sarasota. Survey No. 10179.

- Godown, Jan  
1975 "Bermont Drainage District Dissolved by Two Members." *News-Press*, April 19, 1975. <http://newspapers.com>. Accessed September 2, 2020.
- Johnson Engineering, Inc.  
2005 Application for Comprehensive Plan Amendment Charlotte County, Florida for Babcock Ranch CPA. <http://www.johnsongis.com/PDF/Babcock%20Ranch%20CPA%20-%20Chapter%2000%20&%2001.pdf>. Accessed September 2, 2020.
- Lane, George Jr.  
1973 "Dreams of Cities Stayed on Paper." *The Tampa Bay Times*, November 26, 1973. <http://newspapers.com>. Accessed September 3, 2020.
- News-Press  
1923 "Road Through Arcadia is Assured." *News-Press*, April 7, 1923. <http://newspapers.com>. Accessed September 3, 2020.  
1965 "Drainage District Sought in Petition." *News-Press*, January 10, 1965. <http://newspapers.com>. Accessed September 2, 2020.
- Polk, Paul  
2020 Charlotte County Property Appraiser. <https://www.ccappraiser.com/>, accessed September 3, 2020.
- Southeastern Archaeological Research, Inc. [SEARCH]  
2012 Cultural Resource Assessment Survey of State Road 31 from State Road 80 (Palm Beach Boulevard) to North of County Road 78 (North River Road) Lee County, Florida. SEARCH, Newberry. Survey No. 20161.
- State Road Department  
1917 Road Map State of Florida 1917. Florida Department of Transportation. [https://www.fdot.gov/docs/default-source/geospatial/past\\_statemap/maps/FLStatemap1917.pdf](https://www.fdot.gov/docs/default-source/geospatial/past_statemap/maps/FLStatemap1917.pdf). Accessed September 2, 2020.
- United States Department of Agriculture (USDA)  
1984a Soil Survey of Charlotte County, Florida. Washington D.C  
1984b Soil Survey of Lee County, Florida. Washington D.C. Choose an item.
- United States Geological Survey (USGS)  
1958 Fort Myers, Florida.  
1957 Tuckers Corner, Florida. Photorevised 1987.
- Wilkinson, Kenneth M.  
2020 Lee County Property Appraiser. <https://www.leepa.org/Default.aspx>, accessed September 3, 2020.
- Williams, Ernestine  
1982 "Charlotte commission to hold emergency meeting on rock blasting." *News-Press*, November 3, 1982. <http://newspapers.com>. Accessed October 29, 2020.

Zeitlin, Janine

2019 "Running on the sun." *The Washington Post*, March 21,  
2019.<https://www.washingtonpost.com/business/2019/03/21/welcome-babcock-ranch-sunshine-states-first-solar-powered-town/?arc404=true>. Accessed September 3, 2020.

**Appendix A**  
**Florida Master Site File Forms**

☐ Original  
☒ Update



# RESOURCE GROUP FORM FLORIDA MASTER SITE FILE Version 5.0 3/19

Consult the *Guide to the Resource Group Form* for additional instructions

Site #8 **CH02159**  
 Field Date 10-19-2020  
 Form Date 10-20-2020  
 Recorder# \_\_\_\_\_

**NOTE: Use this form to document districts, landscapes, building complexes and linear resources** as described in the box below. Cultural resources contributing to the Resource Group should also be documented individually at the Site File. **Do not use this form for National Register multiple property submissions (MPSs).** National Register MPSs are treated as Site File manuscripts and are associated with the individual resources included under the MPS cover using the Site File manuscript number.

## Check ONE box that best describes the Resource Group:

- ☐ **Historic district** (NR category "district"): buildings and NR structures only: NO archaeological sites
- ☐ **Archaeological district** (NR category "district"): archaeological sites only: NO buildings or NR structures
- ☐ **Mixed district** (NR category "district"): includes more than one type of cultural resource (example: archaeological sites and buildings)
- ☐ **Building complex** (NR category usually "building(s)"): multiple buildings in close spatial and functional association
- ☐ **Designed historic landscape** (NR category usually "district" or "site"): can include multiple resources (see *National Register Bulletin #18*, page 2 for more detailed definition and examples: e.g. parks, golf courses, campuses, resorts, etc.)
- ☐ **Rural historic landscape** (NR category usually "district" or "site"): can include multiple resources and resources not formally designed (see *National Register Bulletin #30, Guidelines for Evaluating and Documenting Rural Historic Landscapes* for more detailed definition and examples: e.g. farmsteads, fish camps, lumber camps, traditional ceremonial sites, etc.)
- ☒ **Linear resource** (NR category usually "structure"): Linear resources are a special type of structure or historic landscape and can include canals, railways, roads, etc.

Resource Group Name SR 31 Multiple Listing [DHR only] \_\_\_\_\_  
 Project Name CRAS Tech Memo SR 31 SEIR, Lee/Charlotte County FMSF Survey # \_\_\_\_\_  
 National Register Category (please check one): ☐ building(s) ☒ structure ☐ district ☐ site ☐ object  
 Linear Resource Type (if applicable): ☐ canal ☐ railway ☒ road ☐ other (describe): \_\_\_\_\_  
 Ownership: ☐ private-profit ☐ private-nonprofit ☐ private-individual ☐ private-nonspecific ☐ city ☐ county ☒ state ☐ federal ☐ Native American ☐ foreign ☐ unknown

## LOCATION & MAPPING

Address: Street Number Direction Street Name Street Type Suffix Direction  
 City/Town (within 3 miles) Punta Gorda In Current City Limits? ☐ yes ☒ no ☐ unknown  
 County or Counties (do not abbreviate) Charlotte  
 Name of Public Tract (e.g., park) \_\_\_\_\_  
 1) Township 42S Range 25E Section 25, 36 ¼ section: ☐ NW ☐ SW ☐ SE ☐ NE Irregular-name: \_\_\_\_\_  
 2) Township 42S Range 26E Section 30, 31 ¼ section: ☐ NW ☐ SW ☐ SE ☐ NE  
 3) Township \_\_\_\_\_ Range \_\_\_\_\_ Section \_\_\_\_\_ ¼ section: ☐ NW ☐ SW ☐ SE ☐ NE  
 4) Township \_\_\_\_\_ Range \_\_\_\_\_ Section \_\_\_\_\_ ¼ section: ☐ NW ☐ SW ☐ SE ☐ NE  
 USGS 7.5' Map(s) 1) Name TUCKERS CORNER USGS Date 1957  
 2) Name \_\_\_\_\_ USGS Date \_\_\_\_\_  
 Plat, Aerial, or Other Map (map's name, originating office with location) \_\_\_\_\_  
 Landgrant \_\_\_\_\_  
 Verbal Description of Boundaries (description does not replace required map)  
Approximately 2.2 miles, spanning from the Lee-Charlotte county line to north of Cook Brown Road

DHR USE ONLY		OFFICIAL EVALUATION		DHR USE ONLY	
NR List Date	SHPO – Appears to meet criteria for NR listing: <input type="checkbox"/> yes <input type="checkbox"/> no <input type="checkbox"/> insufficient info	Date		Init.	
<input type="checkbox"/> Owner Objection	KEEPER – Determined eligible: <input type="checkbox"/> yes <input type="checkbox"/> no	Date			
	NR Criteria for Evaluation: <input type="checkbox"/> a <input type="checkbox"/> b <input type="checkbox"/> c <input type="checkbox"/> d (see <i>National Register Bulletin 15</i> , p. 2)				

**HISTORY & DESCRIPTION**Construction Year: 1926 ☐approximately ☒year listed or earlier ☐year listed or later

Architect/Designer: \_\_\_\_\_ Builder: \_\_\_\_\_

Total number of individual resources included in this Resource Group: # of contributing \_\_\_\_\_ # of non-contributing \_\_\_\_\_

Time period(s) of significance (choose a period from the list or type in date range(s), e.g. 1895-1925)

1. Twentieth C American 3. \_\_\_\_\_

2. \_\_\_\_\_ 4. \_\_\_\_\_

Narrative Description (*National Register Bulletin 16A* pp. 33-34; attach supplementary sheets if needed)

SR 31 is a paved two-lane road that runs north-south from SR 80 in Lee County, through Charlotte County, to Arcadia in Desoto County. The road was formerly known as State Road 2 which connected the Georgia state line, Orlando, and Fort Myers.

**RESEARCH METHODS (check all that apply)**

- |   |   |   |  |
|---|---|---|--|
| <input checked="" type="checkbox"/> FMSF record search (sites/surveys)  | <input type="checkbox"/> library research | <input type="checkbox"/> building permits         | <input type="checkbox"/> Sanborn maps              |
| <input type="checkbox"/> FL State Archives/photo collection   | <input type="checkbox"/> city directory   | <input type="checkbox"/> occupant/owner interview | <input type="checkbox"/> plat maps                 |
| <input checked="" type="checkbox"/> property appraiser / tax records  | <input type="checkbox"/> newspaper files  | <input type="checkbox"/> neighbor interview       | <input type="checkbox"/> Public Lands Survey (DEP) |
| <input type="checkbox"/> cultural resource survey   | <input type="checkbox"/> historic photos  | <input type="checkbox"/> interior inspection      | <input type="checkbox"/> HABS/HAER record search   |
| <input checked="" type="checkbox"/> other methods (specify) <u>USDA historic aerial photographs (PALMM); FDOT</u> |   |   |  |

Bibliographic References (give FMSF Manuscript # if relevant)

PALMM, accessible online at: <http://palmm.fcla.edu/>; FDOT Official Transportation Map Timeline, accessible online at: [https://www.fdot.gov/docs/default-source/geospatial/past\\_statemap/maps/FLStatemap1926.pdf](https://www.fdot.gov/docs/default-source/geospatial/past_statemap/maps/FLStatemap1926.pdf)

**OPINION OF RESOURCE SIGNIFICANCE**Potentially eligible individually for National Register of Historic Places? ☐yes ☒no ☐insufficient informationPotentially eligible as contributor to a National Register district? ☐yes ☒no ☐insufficient informationExplanation of Evaluation (required, see *National Register Bulletin 16A* p. 48-49. Attach longer statement, if needed, on separate sheet.)

The resource group is not a significant embodiment of a type, period, or method of construction; and has no known significant historic associations.

Area(s) of Historical Significance (see *National Register Bulletin 15*, p. 8 for categories: e.g. "architecture", "ethnic heritage", "community planning & development", etc.)

1. \_\_\_\_\_ 3. \_\_\_\_\_ 5. \_\_\_\_\_  
2. \_\_\_\_\_ 4. \_\_\_\_\_ 6. \_\_\_\_\_

**DOCUMENTATION**

Accessible Documentation Not Filed with the Site File - including field notes, analysis notes, photos, plans and other important documents

- 1) Document type All materials at one location Maintaining organization Archaeological Consultants Inc  
Document description Files, photos, research, documents File or accession #'s P17007
- 2) Document type \_\_\_\_\_ Maintaining organization \_\_\_\_\_  
Document description \_\_\_\_\_ File or accession #'s \_\_\_\_\_

**RECORDER INFORMATION**

Recorder Name Savannah Young Affiliation Archaeological Consultants Inc  
Recorder Contact Information 8110 Blaikie Court, Ste. A / Sarasota, FL/ 34240 / aciflorida@comcast.net  
(address / phone / fax / e-mail)

**Required Attachments**

- ① PHOTOCOPY OF USGS 7.5' MAP WITH DISTRICT BOUNDARY CLEARLY MARKED
- ② LARGE SCALE STREET, PLAT OR PARCEL MAP WITH RESOURCES MAPPED & LABELED
- ③ TABULATION OF ALL INCLUDED RESOURCES - Include name, FMSF #, contributing? Y/N, resource category, street address or other location information if no address.
- ④ PHOTOS OF GENERAL STREETScape OR VIEWS (Optional: aerial photos, views of typical resources)  
When submitting images, they must be included in digital AND hard copy format (plain paper grayscale acceptable).  
Digital images must be at least 1600 x 1200 pixels, 24-bit color, jpeg or tiff.

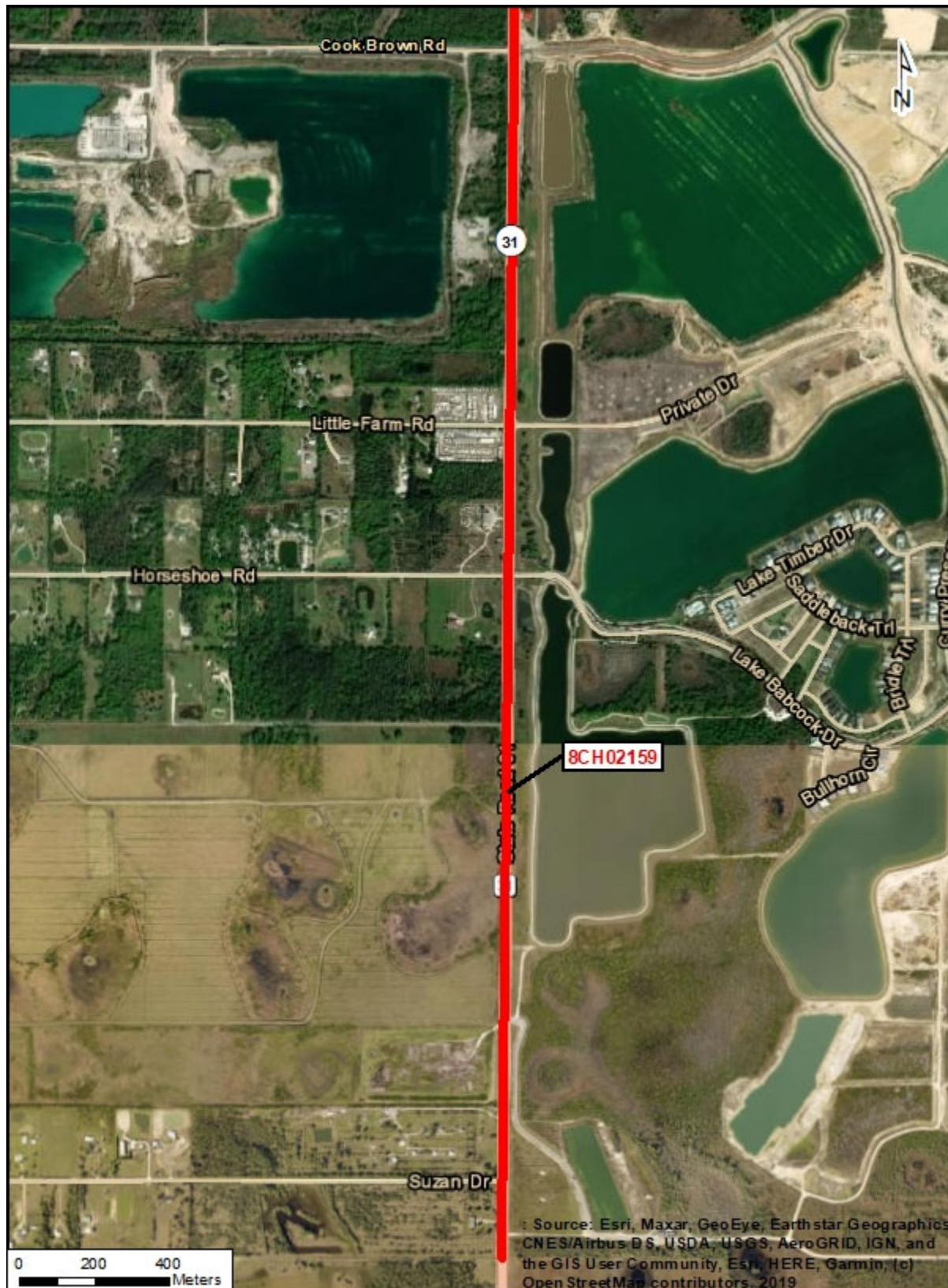


**PHOTOGRAPHS**



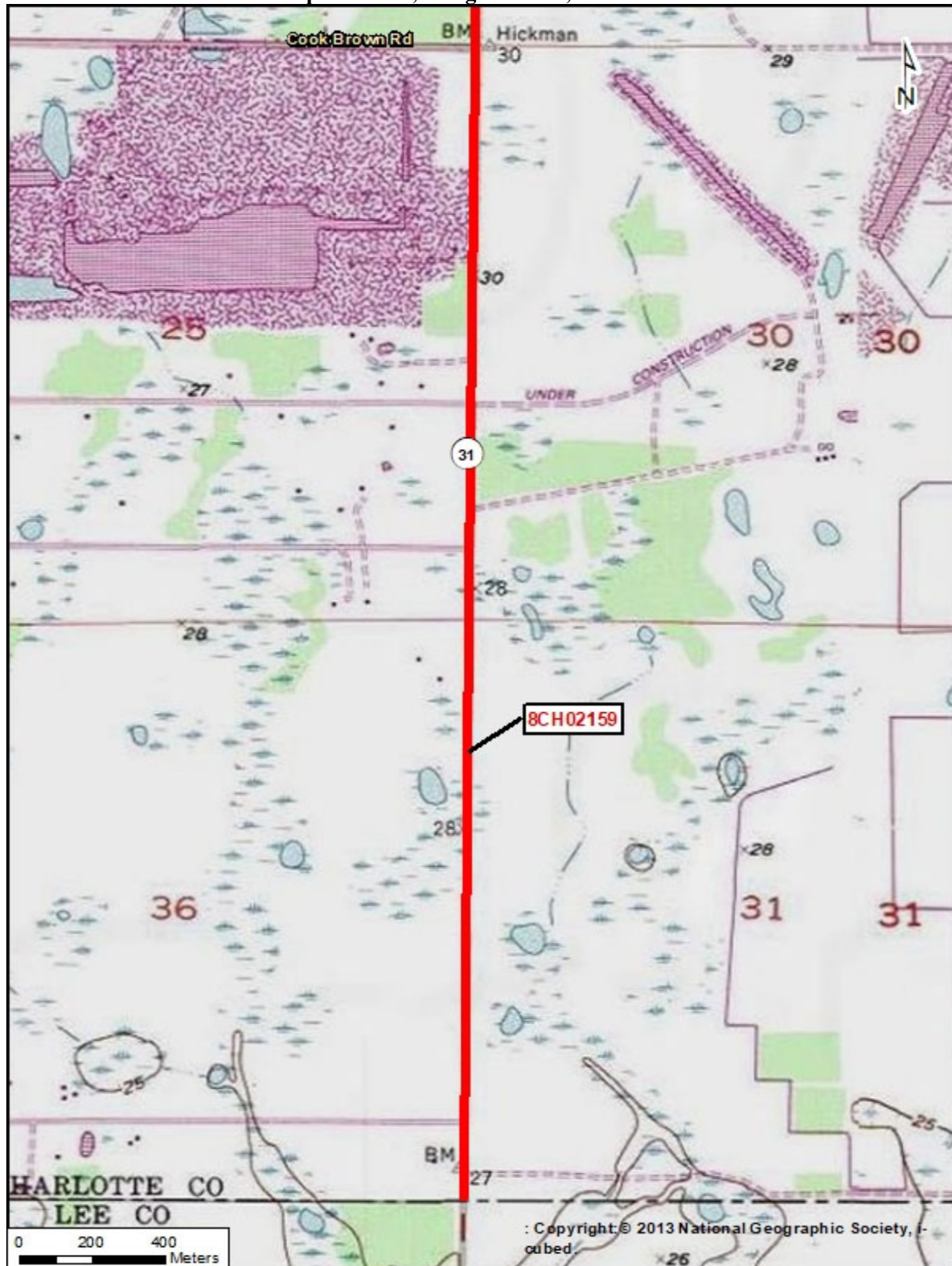


## AERIAL MAP





USGS Tuckers Corner  
Township 42 South, Range 25 East, Sections 25 & 36  
Township 42 South, Range 26 East, Sections 30 & 31



☒ Original  
☐ Update



# HISTORICAL STRUCTURE FORM

## FLORIDA MASTER SITE FILE

Version 5.0 3/19

Site#8 **CH02720**  
 Field Date 10-19-2020  
 Form Date 10-20-2020  
 Recorder # \_\_\_\_\_

Shaded Fields represent the minimum acceptable level of documentation.  
 Consult the *Guide to Historical Structure Forms* for detailed instructions.

Site Name(s) (address if none) 41900 Little Farm Road Multiple Listing (DHR only) \_\_\_\_\_  
 Survey Project Name CRAS Tech Memo SR 31 SEIR, Lee/Charlotte County Survey # (DHR only) \_\_\_\_\_  
 National Register Category (please check one) ☒ building ☐ structure ☐ district ☐ site ☐ object  
 Ownership: ☐ private-profit ☐ private-nonprofit ☒ private-individual ☐ private-nonspecific ☐ city ☐ county ☐ state ☐ federal ☐ Native American ☐ foreign ☐ unknown

### LOCATION & MAPPING

Address: 41900 Little Farm Road  
 Street Number Direction Street Name Street Type Suffix Direction  
 Cross Streets (nearest / between) NW intersection of SR 31 and Little Farm Road  
 USGS 7.5 Map Name TUCKERS CORNER USGS Date 1957 Plat or Other Map \_\_\_\_\_  
 City / Town (within 3 miles) PUNTA GORDA In City Limits? ☐ yes ☐ no ☒ unknown County Charlotte  
 Township 42S Range 25E Section 25 1/4 section: ☐ NW ☐ SW ☐ SE ☐ NE Irregular-name: \_\_\_\_\_  
 Tax Parcel # 422525400008 Landgrant \_\_\_\_\_  
 Subdivision Name \_\_\_\_\_ Block \_\_\_\_\_ Lot \_\_\_\_\_  
 UTM Coordinates: Zone ☐ 16 ☒ 17 Easting 424269 Northing 2963415  
 Other Coordinates: X: \_\_\_\_\_ Y: \_\_\_\_\_ Coordinate System & Datum \_\_\_\_\_  
 Name of Public Tract (e.g., park) \_\_\_\_\_

### HISTORY

Construction Year: 1972 ☐ approximately ☐ year listed or earlier ☒ year listed or later  
 Original Use Warehouse From (year): 1972 To (year): CURR  
 Current Use \_\_\_\_\_ From (year): \_\_\_\_\_ To (year): \_\_\_\_\_  
 Other Use \_\_\_\_\_ From (year): \_\_\_\_\_ To (year): \_\_\_\_\_  
 Moves: ☐ yes ☒ no ☐ unknown Date: \_\_\_\_\_ Original address \_\_\_\_\_  
 Alterations: ☒ yes ☐ no ☐ unknown Date: \_\_\_\_\_ Nature Roofing, siding  
 Additions: ☐ yes ☒ no ☐ unknown Date: \_\_\_\_\_ Nature \_\_\_\_\_  
 Architect (last name first): \_\_\_\_\_ Builder (last name first): \_\_\_\_\_  
 Ownership History (especially original owner, dates, profession, etc.)  
LIETZ PROPERTIES LLC (2009), ROY L. LIETZ (2002), HARRY E. GLASER

Is the Resource Affected by a Local Preservation Ordinance? ☐ yes ☐ no ☒ unknown Describe \_\_\_\_\_

### DESCRIPTION

Style Industrial Vernacular Exterior Plan Rectangular Number of Stories 1  
 Exterior Fabric(s) 1. Metal 2. \_\_\_\_\_ 3. \_\_\_\_\_  
 Roof Type(s) 1. Gable 2. \_\_\_\_\_ 3. \_\_\_\_\_  
 Roof Material(s) 1. Sheet metal:standing seam 2. \_\_\_\_\_ 3. \_\_\_\_\_  
 Roof secondary strucs. (dormers etc.) 1. \_\_\_\_\_ 2. \_\_\_\_\_  
 Windows (types, materials, etc.)  
N/A

Distinguishing Architectural Features (exterior or interior ornaments)  
low-pitched gable roof

Ancillary Features / Outbuildings (record outbuildings, major landscape features; use continuation sheet if needed.)  
Four non-historic metal frame carports

DHR USE ONLY	OFFICIAL EVALUATION	DHR USE ONLY
NR List Date _____  <input type="checkbox"/> Owner Objection	SHPO – Appears to meet criteria for NR listing: <input type="checkbox"/> yes <input type="checkbox"/> no <input type="checkbox"/> insufficient info Date _____ Init. _____ KEEPER – Determined eligible: <input type="checkbox"/> yes <input type="checkbox"/> no Date _____ NR Criteria for Evaluation: <input type="checkbox"/> a <input type="checkbox"/> b <input type="checkbox"/> c <input type="checkbox"/> d (see <i>National Register Bulletin</i> 15, p. 2)	

## DESCRIPTION (continued)

Chimney: No. 0 Chimney Material(s): 1. \_\_\_\_\_ 2. \_\_\_\_\_Structural System(s): 1. Metal skeleton 2. \_\_\_\_\_ 3. \_\_\_\_\_Foundation Type(s): 1. Slab 2. \_\_\_\_\_Foundation Material(s): 1. Concrete, Generic 2. \_\_\_\_\_

## Main Entrance (stylistic details)

S elevation: through a single metal door

## Porch Descriptions (types, locations, roof types, etc.)

Condition (overall resource condition): ☐ excellent ☐ good ☒ fair ☐ deteriorated ☐ ruinous

## Narrative Description of Resource

A one-story Industrial Vernacular style warehouse in fair condition that retains some of its original exterior fabric.

Archaeological Remains \_\_\_\_\_ ☐ Check if Archaeological Form Completed

## RESEARCH METHODS (select all that apply)

- |  |   |   |  |
|--|---|---|--|
| <input checked="" type="checkbox"/> FMSF record search (sites/surveys)                                       | <input type="checkbox"/> library research | <input type="checkbox"/> building permits         | <input type="checkbox"/> Sanborn maps              |
| <input type="checkbox"/> FL State Archives/photo collection  | <input type="checkbox"/> city directory   | <input type="checkbox"/> occupant/owner interview | <input type="checkbox"/> plat maps                 |
| <input checked="" type="checkbox"/> property appraiser / tax records   | <input type="checkbox"/> newspaper files  | <input type="checkbox"/> neighbor interview       | <input type="checkbox"/> Public Lands Survey (DEP) |
| <input type="checkbox"/> cultural resource survey (CRAS)   | <input type="checkbox"/> historic photos  | <input type="checkbox"/> interior inspection      | <input type="checkbox"/> HABS/HAER record search   |
| <input checked="" type="checkbox"/> other methods (describe) <u>USDA historic aerial photographs (PALMM)</u> |   |   |  |

## Bibliographic References (give FMSF manuscript # if relevant, use continuation sheet if needed)

Publication of Archival Library and Museum Materials (PALMM), accessible online at:  
<http://palmm.fcla.edu/>

## OPINION OF RESOURCE SIGNIFICANCE

Appears to meet the criteria for National Register listing individually? ☐ yes ☒ no ☐ insufficient informationAppears to meet the criteria for National Register listing as part of a district? ☐ yes ☒ no ☐ insufficient information

## Explanation of Evaluation (required, whether significant or not; use separate sheet if needed)

The building is not a significant embodiment of a type, period, or method of construction; and has no known significant historic associations.

Area(s) of Historical Significance (see *National Register Bulletin 15*, p. 8 for categories: e.g. "architecture", "ethnic heritage", "community planning & development", etc.)1. \_\_\_\_\_ 3. \_\_\_\_\_ 5. \_\_\_\_\_  
2. \_\_\_\_\_ 4. \_\_\_\_\_ 6. \_\_\_\_\_

## DOCUMENTATION

Accessible Documentation Not Filed with the Site File - including field notes, analysis notes, photos, plans and other important documents

- Document type All materials at one location Maintaining organization Archaeological Consultants Inc
- 1) Document description Files, photos, research, documents File or accession #'s P17007
- 2) Document type \_\_\_\_\_ Maintaining organization \_\_\_\_\_
- Document description \_\_\_\_\_ File or accession #'s \_\_\_\_\_

## RECORDER INFORMATION

Recorder Name Savannah Young Affiliation Archaeological Consultants Inc

Recorder Contact Information 8110 Blaikie Court, Ste. A / Sarasota, FL/ 34240 / aciflorida@comcast.net  
(address / phone / fax / e-mail)

## Required Attachments

① USGS 7.5' MAP WITH STRUCTURE LOCATION CLEARLY INDICATED

② LARGE SCALE STREET, PLAT OR PARCEL MAP (available from most property appraiser web sites)

③ PHOTO OF MAIN FACADE, DIGITAL IMAGE FILE

When submitting an image, it must be included in digital AND hard copy format (plain paper grayscale acceptable).  
Digital image must be at least 1600 x 1200 pixels, 24-bit color, jpeg or tiff.



**PHOTOGRAPHS**



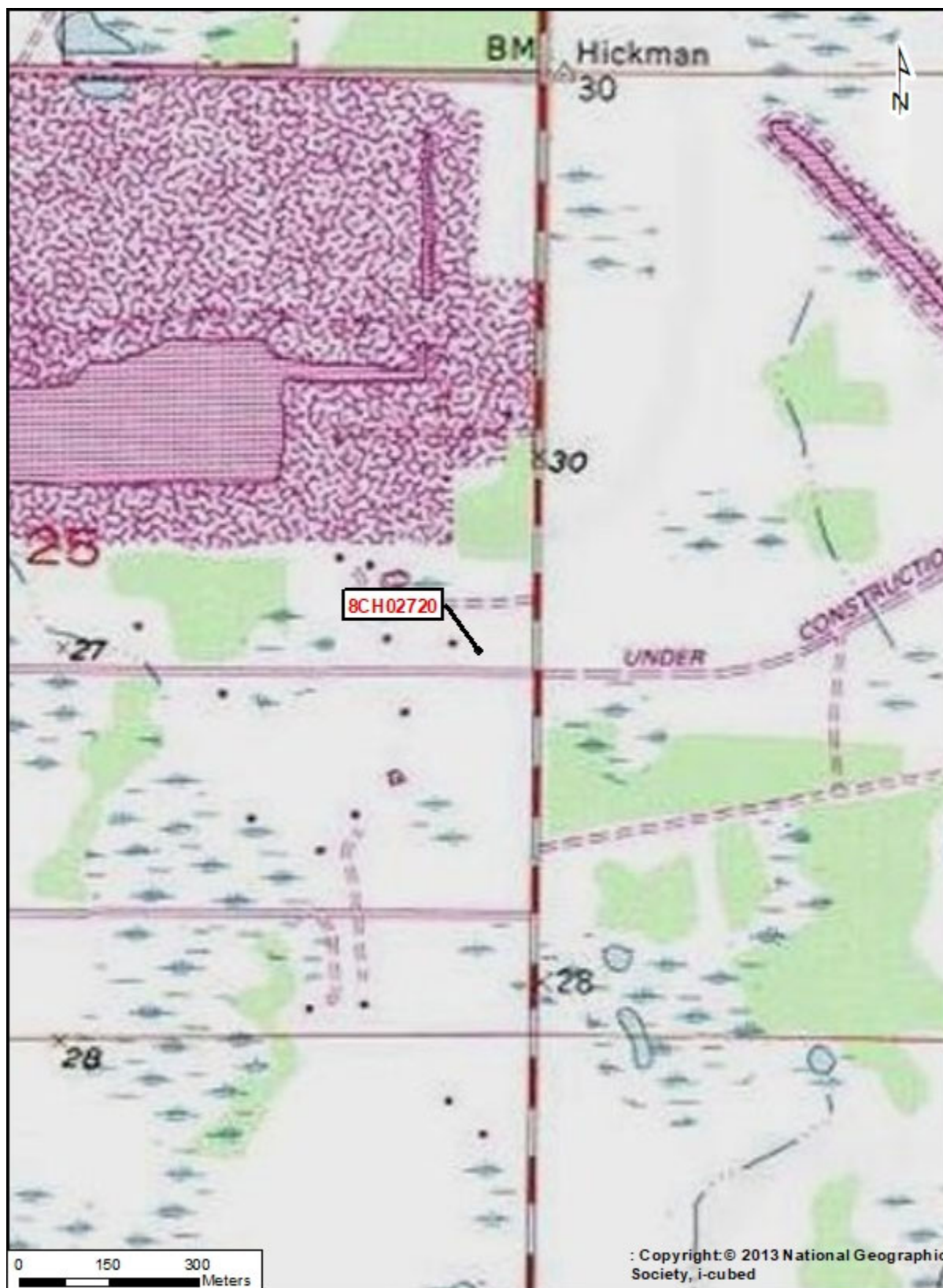


## AERIAL MAP





USGS Tuckers Corner  
Township 42 South, Range 25 East, Section 25



☒ Original  
☐ Update



# HISTORICAL STRUCTURE FORM

## FLORIDA MASTER SITE FILE

Version 5.0 3/19

Site#8 **CH02721**  
 Field Date 10-19-2020  
 Form Date 10-20-2020  
 Recorder # \_\_\_\_\_

Shaded Fields represent the minimum acceptable level of documentation.  
 Consult the *Guide to Historical Structure Forms* for detailed instructions.

Site Name(s) (address if none) 12931 SR 31 Multiple Listing (DHR only) \_\_\_\_\_  
 Survey Project Name CRAS Tech Memo SR 31 SEIR, Lee/Charlotte County Survey # (DHR only) \_\_\_\_\_  
 National Register Category (please check one) ☒ building ☐ structure ☐ district ☐ site ☐ object  
 Ownership: ☐ private-profit ☐ private-nonprofit ☒ private-individual ☐ private-nonspecific ☐ city ☐ county ☐ state ☐ federal ☐ Native American ☐ foreign ☐ unknown

### LOCATION & MAPPING

Address: 12931 SR 31 SR 31 SR 31 SR 31  
 Cross Streets (nearest / between) NW intersection of SR 31 and Cook Brown Road  
 USGS 7.5 Map Name TUCKERS CORNER USGS Date 1957 Plat or Other Map \_\_\_\_\_  
 City / Town (within 3 miles) PUNTA GORDA In City Limits? ☐ yes ☐ no ☒ unknown County Charlotte  
 Township 42S Range 25E Section 24 1/4 section: ☐ NW ☐ SW ☐ SE ☐ NE Irregular-name: \_\_\_\_\_  
 Tax Parcel # 422524400005 Landgrant \_\_\_\_\_  
 Subdivision Name \_\_\_\_\_ Block \_\_\_\_\_ Lot \_\_\_\_\_  
 UTM Coordinates: Zone ☐ 16 ☒ 17 Easting 424153 Northing 2964605  
 Other Coordinates: X: \_\_\_\_\_ Y: \_\_\_\_\_ Coordinate System & Datum \_\_\_\_\_  
 Name of Public Tract (e.g., park) \_\_\_\_\_

### HISTORY

Construction Year: 1966 ☐ approximately ☐ year listed or earlier ☒ year listed or later  
 Original Use Control tower From (year): 1966 To (year): CURR  
 Current Use \_\_\_\_\_ From (year): \_\_\_\_\_ To (year): \_\_\_\_\_  
 Other Use \_\_\_\_\_ From (year): \_\_\_\_\_ To (year): \_\_\_\_\_  
 Moves: ☐ yes ☒ no ☐ unknown Date: \_\_\_\_\_ Original address \_\_\_\_\_  
 Alterations: ☐ yes ☒ no ☐ unknown Date: \_\_\_\_\_ Nature \_\_\_\_\_  
 Additions: ☒ yes ☐ no ☐ unknown Date: \_\_\_\_\_ Nature Equipment/storage bldg  
 Architect (last name first): \_\_\_\_\_ Builder (last name first): \_\_\_\_\_  
 Ownership History (especially original owner, dates, profession, etc.)  
FORT MYERS BROADCASTING CO

Is the Resource Affected by a Local Preservation Ordinance? ☐ yes ☐ no ☒ unknown Describe \_\_\_\_\_

### DESCRIPTION

Style No style Exterior Plan Irregular Number of Stories 1  
 Exterior Fabric(s) 1. Metal 2. \_\_\_\_\_ 3. \_\_\_\_\_  
 Roof Type(s) 1. Gable 2. \_\_\_\_\_ 3. \_\_\_\_\_  
 Roof Material(s) 1. Sheet metal:standing seam 2. \_\_\_\_\_ 3. \_\_\_\_\_  
 Roof secondary strucs. (dormers etc.) 1. \_\_\_\_\_ 2. \_\_\_\_\_  
 Windows (types, materials, etc.)  
N/A

Distinguishing Architectural Features (exterior or interior ornaments)  
Carport and massive TV tower

Ancillary Features / Outbuildings (record outbuildings, major landscape features; use continuation sheet if needed.)  
TV tower and pole barn

DHR USE ONLY		OFFICIAL EVALUATION		DHR USE ONLY	
NR List Date	SHPO – Appears to meet criteria for NR listing: <input type="checkbox"/> yes <input type="checkbox"/> no <input type="checkbox"/> insufficient info	Date	_____	Init.	_____
<input type="checkbox"/> Owner Objection	KEEPER – Determined eligible: <input type="checkbox"/> yes <input type="checkbox"/> no	Date	_____		
	NR Criteria for Evaluation: <input type="checkbox"/> a <input type="checkbox"/> b <input type="checkbox"/> c <input type="checkbox"/> d (see <i>National Register Bulletin</i> 15, p. 2)				

**DESCRIPTION (continued)**Chimney: No. 0 Chimney Material(s): 1. \_\_\_\_\_ 2. \_\_\_\_\_Structural System(s): 1. Metal skeleton 2. \_\_\_\_\_ 3. \_\_\_\_\_Foundation Type(s): 1. Slab 2. \_\_\_\_\_Foundation Material(s): 1. Concrete, Generic 2. \_\_\_\_\_**Main Entrance (stylistic details)**

Unknown - property was not accessible due to security gate

**Porch Descriptions (types, locations, roof types, etc.)**Condition (overall resource condition): ☐ excellent ☐ good ☒ fair ☐ deteriorated ☐ ruinous**Narrative Description of Resource**

A one-story metal frame building w/ a masonry equipment/storage building addition and TV control tower. The property was not accessible, but it appears to be typical example of a TV transmitter station with alterations found throughout Charlotte County.

Archaeological Remains \_\_\_\_\_ ☐ Check if Archaeological Form Completed**RESEARCH METHODS (select all that apply)**

- |  |   |   |  |
|--|---|---|--|
| <input checked="" type="checkbox"/> FMSF record search (sites/surveys)                                       | <input type="checkbox"/> library research | <input type="checkbox"/> building permits         | <input type="checkbox"/> Sanborn maps              |
| <input type="checkbox"/> FL State Archives/photo collection  | <input type="checkbox"/> city directory   | <input type="checkbox"/> occupant/owner interview | <input type="checkbox"/> plat maps                 |
| <input checked="" type="checkbox"/> property appraiser / tax records   | <input type="checkbox"/> newspaper files  | <input type="checkbox"/> neighbor interview       | <input type="checkbox"/> Public Lands Survey (DEP) |
| <input type="checkbox"/> cultural resource survey (CRAS)   | <input type="checkbox"/> historic photos  | <input type="checkbox"/> interior inspection      | <input type="checkbox"/> HABS/HAER record search   |
| <input checked="" type="checkbox"/> other methods (describe) <u>USDA historic aerial photographs (PALMM)</u> |   |   |  |

**Bibliographic References (give FMSF manuscript # if relevant, use continuation sheet if needed)**

Publication of Archival Library and Museum Materials (PALMM), accessible online at:  
<http://palmm.fcla.edu/>

**OPINION OF RESOURCE SIGNIFICANCE**Appears to meet the criteria for National Register listing individually? ☐ yes ☒ no ☐ insufficient informationAppears to meet the criteria for National Register listing as part of a district? ☐ yes ☒ no ☐ insufficient information**Explanation of Evaluation (required, whether significant or not; use separate sheet if needed)**

The building is not a significant embodiment of a type, period, or method of construction; and has no known significant historic associations.

Area(s) of Historical Significance (see *National Register Bulletin 15*, p. 8 for categories: e.g. "architecture", "ethnic heritage", "community planning & development", etc.)

1. \_\_\_\_\_ 3. \_\_\_\_\_ 5. \_\_\_\_\_  
 2. \_\_\_\_\_ 4. \_\_\_\_\_ 6. \_\_\_\_\_

**DOCUMENTATION**

Accessible Documentation Not Filed with the Site File - including field notes, analysis notes, photos, plans and other important documents

- 1) Document type All materials at one location Maintaining organization Archaeological Consultants Inc  
 Document description Files, photos, research, documents File or accession #'s P17007
- 2) Document type \_\_\_\_\_ Maintaining organization \_\_\_\_\_  
 Document description \_\_\_\_\_ File or accession #'s \_\_\_\_\_

**RECORDER INFORMATION**

Recorder Name Savannah Young Affiliation Archaeological Consultants Inc  
 Recorder Contact Information 8110 Blaikie Court, Ste. A / Sarasota, FL/ 34240 / aciflorida@comcast.net  
 (address / phone / fax / e-mail)

**Required Attachments****① USGS 7.5' MAP WITH STRUCTURE LOCATION CLEARLY INDICATED****② LARGE SCALE STREET, PLAT OR PARCEL MAP** (available from most property appraiser web sites)**③ PHOTO OF MAIN FACADE, DIGITAL IMAGE FILE**

When submitting an image, it must be included in digital **AND** hard copy format (plain paper grayscale acceptable).  
 Digital image must be at least 1600 x 1200 pixels, 24-bit color, jpeg or tiff.

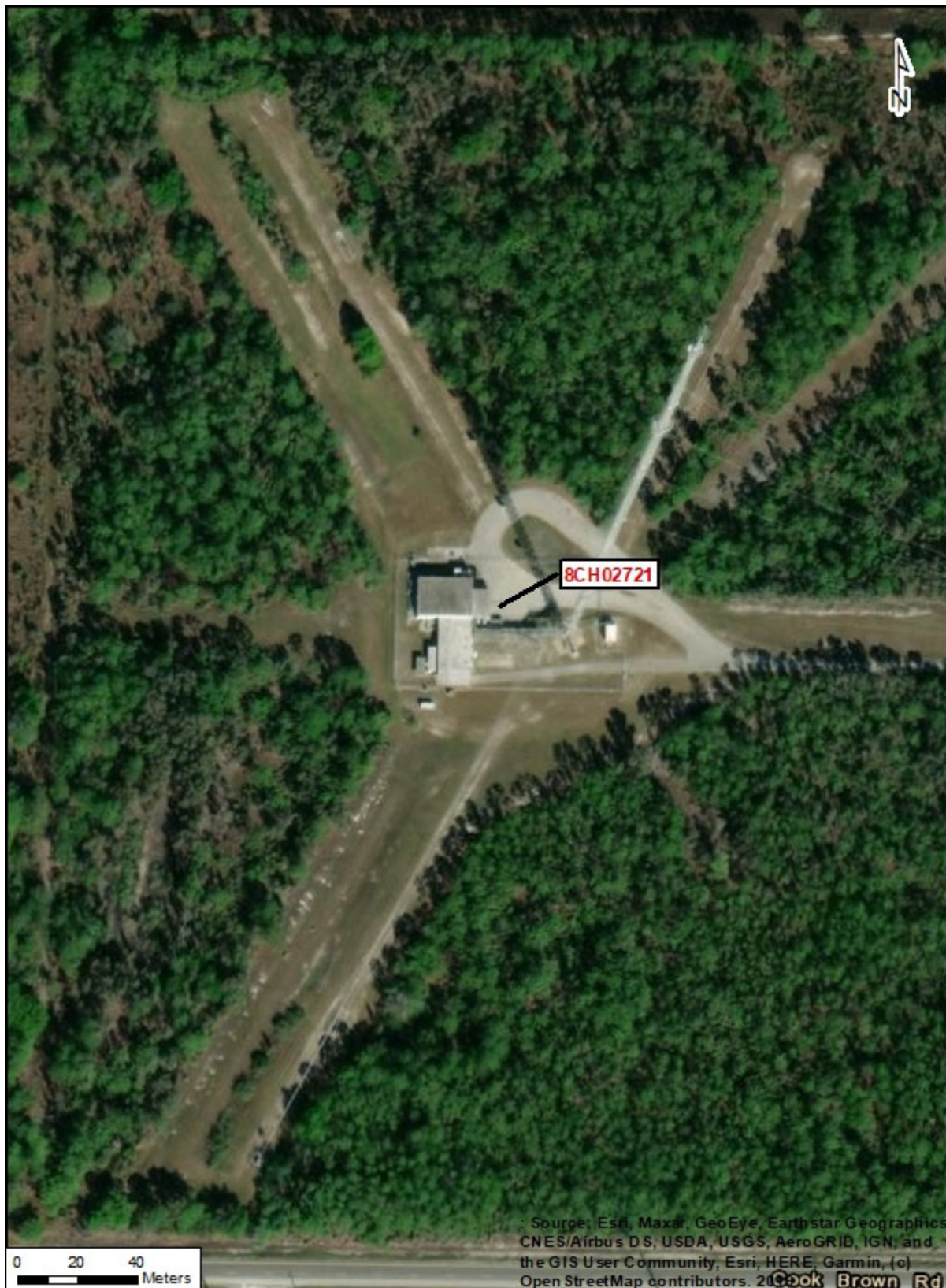


**PHOTOGRAPHS**



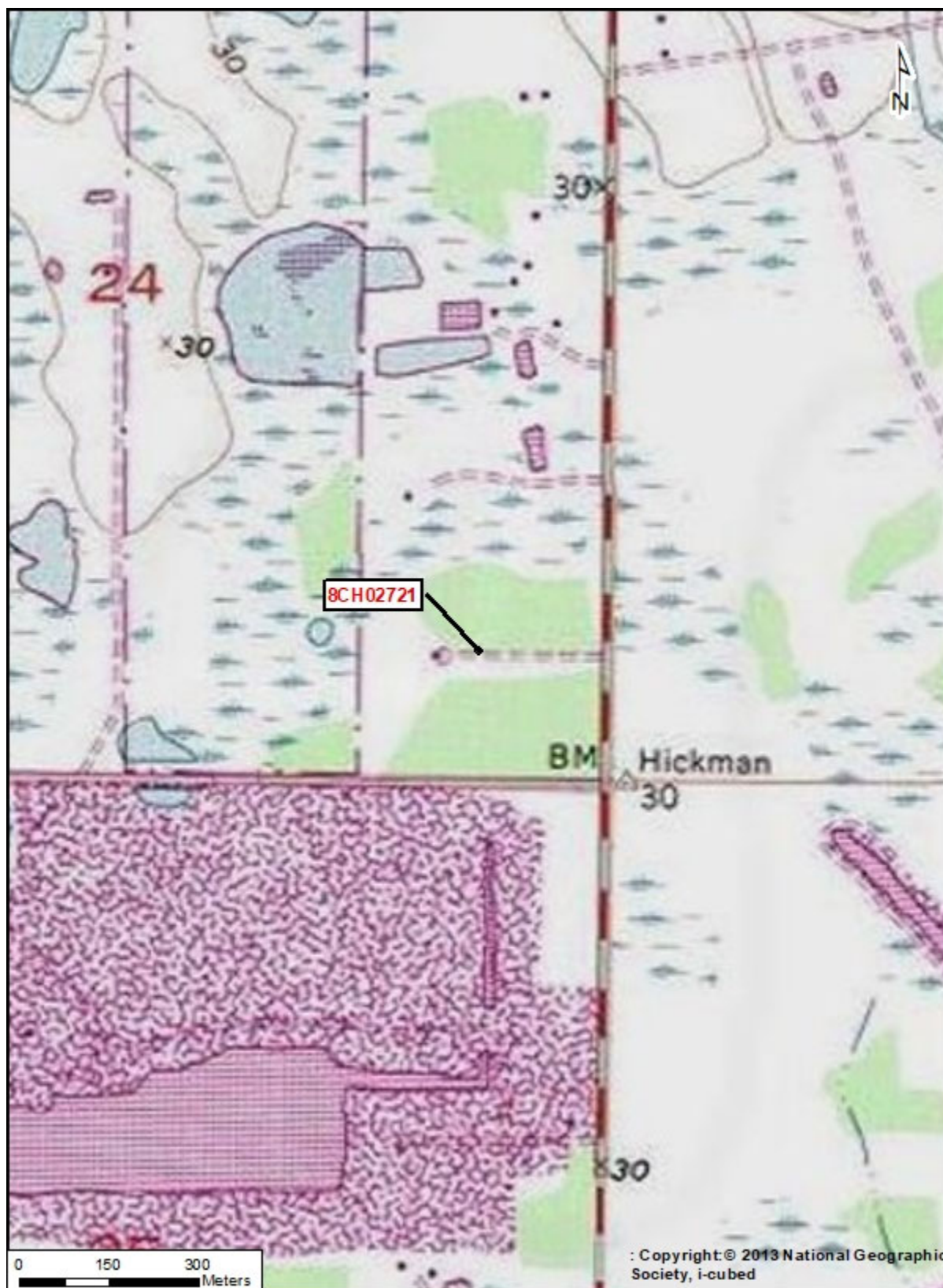


**AERIAL MAP**





USGS Tuckers Corner  
Township 42 South, Range 25 East, Section 24



☒ Original  
☐ Update



# HISTORICAL STRUCTURE FORM

## FLORIDA MASTER SITE FILE

Version 5.0 3/19

Site#8 **LL02728**  
 Field Date 10-19-2020  
 Form Date 10-20-2020  
 Recorder # \_\_\_\_\_

Shaded Fields represent the minimum acceptable level of documentation.  
 Consult the *Guide to Historical Structure Forms* for detailed instructions.

Site Name(s) (address if none) 19411 SR 31 Multiple Listing (DHR only) \_\_\_\_\_  
 Survey Project Name CRAS Tech Memo SR 31 SEIR, Lee/Charlotte County Survey # (DHR only) \_\_\_\_\_  
 National Register Category (please check one) ☒ building ☐ structure ☐ district ☐ site ☐ object  
 Ownership: ☐ private-profit ☐ private-nonprofit ☒ private-individual ☐ private-nonspecific ☐ city ☐ county ☐ state ☐ federal ☐ Native American ☐ foreign ☐ unknown

### LOCATION & MAPPING

Address: 19411 SR 31  
 Street Number Direction Street Name Street Type Suffix Direction  
 Cross Streets (nearest / between) SW intersection of SR 31 and Shirley Lane  
 USGS 7.5 Map Name FORT MYERS USGS Date 1958 Plat or Other Map \_\_\_\_\_  
 City / Town (within 3 miles) North Fort Myers In City Limits? ☐ yes ☐ no ☒ unknown County Lee  
 Township 43S Range 25E Section 12 ¼ section: ☐ NW ☐ SW ☐ SE ☐ NE Irregular-name: \_\_\_\_\_  
 Tax Parcel # 12-43-25-00-00003.0180 Landgrant \_\_\_\_\_  
 Subdivision Name \_\_\_\_\_ Block \_\_\_\_\_ Lot \_\_\_\_\_  
 UTM Coordinates: Zone ☐ 16 ☒ 17 Easting 424248 Northing 2958627  
 Other Coordinates: X: \_\_\_\_\_ Y: \_\_\_\_\_ Coordinate System & Datum \_\_\_\_\_  
 Name of Public Tract (e.g., park) \_\_\_\_\_

### HISTORY

Construction Year: 1968 ☐ approximately ☐ year listed or earlier ☒ year listed or later  
 Original Use Residence, private From (year): 1968 To (year): CURR  
 Current Use \_\_\_\_\_ From (year): \_\_\_\_\_ To (year): \_\_\_\_\_  
 Other Use \_\_\_\_\_ From (year): \_\_\_\_\_ To (year): \_\_\_\_\_  
 Moves: ☐ yes ☒ no ☐ unknown Date: \_\_\_\_\_ Original address \_\_\_\_\_  
 Alterations: ☒ yes ☐ no ☐ unknown Date: \_\_\_\_\_ Nature new doors & windows  
 Additions: ☐ yes ☒ no ☐ unknown Date: \_\_\_\_\_ Nature \_\_\_\_\_  
 Architect (last name first): \_\_\_\_\_ Builder (last name first): \_\_\_\_\_  
 Ownership History (especially original owner, dates, profession, etc.)  
CONNIE R. RICCI (2002), TAMARA M. EASH (1986), MARY E. YATES

Is the Resource Affected by a Local Preservation Ordinance? ☐ yes ☐ no ☒ unknown Describe \_\_\_\_\_

### DESCRIPTION

Style Masonry Vernacular Exterior Plan Irregular Number of Stories 1  
 Exterior Fabric(s) 1. Concrete 2. Stucco 3. Wood/Plywood  
 Roof Type(s) 1. Gable 2. \_\_\_\_\_ 3. \_\_\_\_\_  
 Roof Material(s) 1. Composition shingles 2. \_\_\_\_\_ 3. \_\_\_\_\_  
 Roof secondary strucs. (dormers etc.) 1. \_\_\_\_\_ 2. \_\_\_\_\_

Windows (types, materials, etc.)  
independent, aluminum, 1/1 SHS and slider

Distinguishing Architectural Features (exterior or interior ornaments)  
wooden gable ends, corner boards, plywood siding

Ancillary Features / Outbuildings (record outbuildings, major landscape features; use continuation sheet if needed.)  
1974 shed located on the west elevation behind main building

### DHR USE ONLY

### OFFICIAL EVALUATION

### DHR USE ONLY

NR List Date _____	SHPO – Appears to meet criteria for NR listing: <input type="checkbox"/> yes <input type="checkbox"/> no <input type="checkbox"/> insufficient info Date _____ Init. _____
<input type="checkbox"/> Owner Objection	KEEPER – Determined eligible: <input type="checkbox"/> yes <input type="checkbox"/> no Date _____
	NR Criteria for Evaluation: <input type="checkbox"/> a <input type="checkbox"/> b <input type="checkbox"/> c <input type="checkbox"/> d (see <i>National Register Bulletin</i> 15, p. 2)

**DESCRIPTION (continued)**Chimney: No. 0 Chimney Material(s): 1. \_\_\_\_\_ 2. \_\_\_\_\_Structural System(s): 1. Concrete block 2. \_\_\_\_\_ 3. \_\_\_\_\_Foundation Type(s): 1. Slab 2. \_\_\_\_\_Foundation Material(s): 1. Concrete, Generic 2. \_\_\_\_\_**Main Entrance (stylistic details)**

Elevation: through a single panel door with an oval window within a partial-width open front porch

**Porch Descriptions (types, locations, roof types, etc.)**

partial-width open front porch beneath portion of a low-pitched gable roof

Condition (overall resource condition): ☐ excellent ☐ good ☒ fair ☐ deteriorated ☐ ruinous**Narrative Description of Resource**

One-story Masonry Vernacular residence is in fair condition, and retains some of its original exterior fabric. Overall a typical example of an altered Masonry Vernacular style residence found throughout Lee County and the state of Florida.

Archaeological Remains \_\_\_\_\_ ☐ Check if Archaeological Form Completed**RESEARCH METHODS (select all that apply)**

- |  |   |   |  |
|--|---|---|--|
| <input checked="" type="checkbox"/> FMSF record search (sites/surveys)                                       | <input type="checkbox"/> library research | <input type="checkbox"/> building permits         | <input type="checkbox"/> Sanborn maps              |
| <input type="checkbox"/> FL State Archives/photo collection  | <input type="checkbox"/> city directory   | <input type="checkbox"/> occupant/owner interview | <input type="checkbox"/> plat maps                 |
| <input checked="" type="checkbox"/> property appraiser / tax records   | <input type="checkbox"/> newspaper files  | <input type="checkbox"/> neighbor interview       | <input type="checkbox"/> Public Lands Survey (DEP) |
| <input type="checkbox"/> cultural resource survey (CRAS)   | <input type="checkbox"/> historic photos  | <input type="checkbox"/> interior inspection      | <input type="checkbox"/> HABS/HAER record search   |
| <input checked="" type="checkbox"/> other methods (describe) <u>USDA historic aerial photographs (PALMM)</u> |   |   |  |

**Bibliographic References (give FMSF manuscript # if relevant, use continuation sheet if needed)**Publication of Archival Library and Museum Materials (PALMM), accessible online at:  
<http://palmm.fcla.edu/>**OPINION OF RESOURCE SIGNIFICANCE**Appears to meet the criteria for National Register listing individually? ☐ yes ☒ no ☐ insufficient informationAppears to meet the criteria for National Register listing as part of a district? ☐ yes ☒ no ☐ insufficient information**Explanation of Evaluation (required, whether significant or not; use separate sheet if needed)**

The building is not a significant embodiment of a type, period, or method of construction; and has no known significant historic associations.

Area(s) of Historical Significance (see *National Register Bulletin 15*, p. 8 for categories: e.g. "architecture", "ethnic heritage", "community planning & development", etc.)1. \_\_\_\_\_ 3. \_\_\_\_\_ 5. \_\_\_\_\_  
2. \_\_\_\_\_ 4. \_\_\_\_\_ 6. \_\_\_\_\_**DOCUMENTATION**

Accessible Documentation Not Filed with the Site File - including field notes, analysis notes, photos, plans and other important documents

- Document type All materials at one location Maintaining organization Archaeological Consultants Inc
- 1) Document description Files, photos, research, documents File or accession #'s P17007
- 2) Document type \_\_\_\_\_ Maintaining organization \_\_\_\_\_
- Document description \_\_\_\_\_ File or accession #'s \_\_\_\_\_

**RECORDER INFORMATION**

Recorder Name Savannah Young Affiliation Archaeological Consultants Inc

Recorder Contact Information 8110 Blaikie Court, Ste. A / Sarasota, FL/ 34240 / aciflorida@comcast.net

(address / phone / fax / e-mail)

**Required Attachments****① USGS 7.5' MAP WITH STRUCTURE LOCATION CLEARLY INDICATED****② LARGE SCALE STREET, PLAT OR PARCEL MAP** (available from most property appraiser web sites)**③ PHOTO OF MAIN FACADE, DIGITAL IMAGE FILE**

When submitting an image, it must be included in digital AND hard copy format (plain paper grayscale acceptable).

Digital image must be at least 1600 x 1200 pixels, 24-bit color, jpeg or tiff.



**PHOTOGRAPHS**





## AERIAL MAP





USGS Fort Myers  
Township 43 South, Range 25 East, Section 12



☒ Original  
☐ Update



# HISTORICAL STRUCTURE FORM

## FLORIDA MASTER SITE FILE

Version 5.0 3/19

Site#8 **LL02729**  
 Field Date 10-19-2020  
 Form Date 10-20-2020  
 Recorder # \_\_\_\_\_

Shaded Fields represent the minimum acceptable level of documentation.  
 Consult the *Guide to Historical Structure Forms* for detailed instructions.

Site Name(s) (address if none) 11901 Shirley Lane Multiple Listing (DHR only) \_\_\_\_\_  
 Survey Project Name CRAS Tech Memo SR 31 SEIR, Lee/Charlotte County Survey # (DHR only) \_\_\_\_\_  
 National Register Category (please check one) ☒ building ☐ structure ☐ district ☐ site ☐ object  
 Ownership: ☐ private-profit ☐ private-nonprofit ☒ private-individual ☐ private-nonspecific ☐ city ☐ county ☐ state ☐ federal ☐ Native American ☐ foreign ☐ unknown

### LOCATION & MAPPING

Address: 11901 Shirley Lane  
 Street Number Direction Street Name Street Type Suffix Direction  
 Cross Streets (nearest / between) NW intersection of SR 31 and Shirley Lane  
 USGS 7.5 Map Name FORT MYERS USGS Date 1958 Plat or Other Map \_\_\_\_\_  
 City / Town (within 3 miles) North Fort Myers In City Limits? ☐ yes ☐ no ☒ unknown County Lee  
 Township 43S Range 25E Section 12 ¼ section: ☐ NW ☐ SW ☐ SE ☐ NE Irregular-name: \_\_\_\_\_  
 Tax Parcel # 12-43-25-00-00003.0030 Landgrant \_\_\_\_\_  
 Subdivision Name \_\_\_\_\_ Block \_\_\_\_\_ Lot \_\_\_\_\_  
 UTM Coordinates: Zone ☐ 16 ☒ 17 Easting 424166 Northing 2958733  
 Other Coordinates: X: \_\_\_\_\_ Y: \_\_\_\_\_ Coordinate System & Datum \_\_\_\_\_  
 Name of Public Tract (e.g., park) \_\_\_\_\_

### HISTORY

Construction Year: 1962 ☐ approximately ☐ year listed or earlier ☒ year listed or later  
 Original Use Residence, private From (year): 1962 To (year): CURR  
 Current Use \_\_\_\_\_ From (year): \_\_\_\_\_ To (year): \_\_\_\_\_  
 Other Use \_\_\_\_\_ From (year): \_\_\_\_\_ To (year): \_\_\_\_\_  
 Moves: ☐ yes ☒ no ☐ unknown Date: \_\_\_\_\_ Original address \_\_\_\_\_  
 Alterations: ☒ yes ☐ no ☐ unknown Date: \_\_\_\_\_ Nature Roofing  
 Additions: ☒ yes ☐ no ☐ unknown Date: \_\_\_\_\_ Nature Enclosed & open porches  
 Architect (last name first): \_\_\_\_\_ Builder (last name first): \_\_\_\_\_  
 Ownership History (especially original owner, dates, profession, etc.)  
SHIRLEY RACHEL JOHNSON TR (1988), SHIRLEY R. JOHNSON (1961), R F BRENNEMAN

Is the Resource Affected by a Local Preservation Ordinance? ☐ yes ☐ no ☒ unknown Describe \_\_\_\_\_

### DESCRIPTION

Style Masonry Vernacular Exterior Plan Irregular Number of Stories 1  
 Exterior Fabric(s) 1. Concrete 2. Stucco 3.  
 Roof Type(s) 1. Gable 2. 3.  
 Roof Material(s) 1. Composition shingles 2. 3.  
 Roof secondary strucs. (dormers etc.) 1. 2.

Windows (types, materials, etc.)

independent, aluminum, 1/1 SHS; paired 3-stacked, aluminum, awning; independent, 5-stacked, aluminum, jalousie; paired 10-stacked, aluminum, jalousie

Distinguishing Architectural Features (exterior or interior ornaments)

wooden gable ends, low-pitched gable roof

Ancillary Features / Outbuildings (record outbuildings, major landscape features; use continuation sheet if needed.)

2012 detached metal garage, 1992 pool and patio, 1987 gazebo, 1985 detached garage

### DHR USE ONLY

### OFFICIAL EVALUATION

### DHR USE ONLY

NR List Date _____	SHPO – Appears to meet criteria for NR listing: <input type="checkbox"/> yes <input type="checkbox"/> no <input type="checkbox"/> insufficient info Date _____ Init. _____
<input type="checkbox"/> Owner Objection	KEEPER – Determined eligible: <input type="checkbox"/> yes <input type="checkbox"/> no Date _____
	NR Criteria for Evaluation: <input type="checkbox"/> a <input type="checkbox"/> b <input type="checkbox"/> c <input type="checkbox"/> d (see <i>National Register Bulletin</i> 15, p. 2)

**DESCRIPTION (continued)**Chimney: No. 0 Chimney Material(s): 1. \_\_\_\_\_ 2. \_\_\_\_\_Structural System(s): 1. Concrete block 2. \_\_\_\_\_ 3. \_\_\_\_\_Foundation Type(s): 1. Slab 2. \_\_\_\_\_Foundation Material(s): 1. Concrete, Generic 2. \_\_\_\_\_**Main Entrance (stylistic details)**

S elevation: through a single panel door with a center fanlight beneath an extended eave

**Porch Descriptions (types, locations, roof types, etc.)**

N elev: partial-width open and enclosed porches beneath a shed roof

Condition (overall resource condition): ☐ excellent ☐ good ☒ fair ☐ deteriorated ☐ ruinous**Narrative Description of Resource**

One-story Masonry Vernacular residence is in good condition, and retains most of its original exterior fabric. Overall a typical example of an altered Masonry Vernacular style residence found throughout Lee County and the state of Florida.

Archaeological Remains \_\_\_\_\_ ☐ Check if Archaeological Form Completed**RESEARCH METHODS (select all that apply)**

- |  |   |   |  |
|--|---|---|--|
| <input checked="" type="checkbox"/> FMSF record search (sites/surveys)                                       | <input type="checkbox"/> library research | <input type="checkbox"/> building permits         | <input type="checkbox"/> Sanborn maps              |
| <input type="checkbox"/> FL State Archives/photo collection  | <input type="checkbox"/> city directory   | <input type="checkbox"/> occupant/owner interview | <input type="checkbox"/> plat maps                 |
| <input checked="" type="checkbox"/> property appraiser / tax records   | <input type="checkbox"/> newspaper files  | <input type="checkbox"/> neighbor interview       | <input type="checkbox"/> Public Lands Survey (DEP) |
| <input type="checkbox"/> cultural resource survey (CRAS)   | <input type="checkbox"/> historic photos  | <input type="checkbox"/> interior inspection      | <input type="checkbox"/> HABS/HAER record search   |
| <input checked="" type="checkbox"/> other methods (describe) <u>USDA historic aerial photographs (PALMM)</u> |   |   |  |

**Bibliographic References (give FMSF manuscript # if relevant, use continuation sheet if needed)**Publication of Archival Library and Museum Materials (PALMM), accessible online at:  
<http://palmm.fcla.edu/>**OPINION OF RESOURCE SIGNIFICANCE**Appears to meet the criteria for National Register listing individually? ☐ yes ☒ no ☐ insufficient informationAppears to meet the criteria for National Register listing as part of a district? ☐ yes ☒ no ☐ insufficient information**Explanation of Evaluation (required, whether significant or not; use separate sheet if needed)**

The building is not a significant embodiment of a type, period, or method of construction; and has no known significant historic associations.

Area(s) of Historical Significance (see *National Register Bulletin 15*, p. 8 for categories: e.g. "architecture", "ethnic heritage", "community planning & development", etc.)1. \_\_\_\_\_ 3. \_\_\_\_\_ 5. \_\_\_\_\_  
2. \_\_\_\_\_ 4. \_\_\_\_\_ 6. \_\_\_\_\_**DOCUMENTATION**

Accessible Documentation Not Filed with the Site File - including field notes, analysis notes, photos, plans and other important documents

- 1) Document type All materials at one location Maintaining organization Archaeological Consultants Inc  
Document description Files, photos, research, documents File or accession #'s P17007
- 2) Document type \_\_\_\_\_ Maintaining organization \_\_\_\_\_  
Document description \_\_\_\_\_ File or accession #'s \_\_\_\_\_

**RECORDER INFORMATION**Recorder Name Savannah Young Affiliation Archaeological Consultants Inc  
Recorder Contact Information 8110 Blaikie Court, Ste. A / Sarasota, FL/ 34240 / aciflorida@comcast.net  
(address / phone / fax / e-mail)**Required Attachments****① USGS 7.5' MAP WITH STRUCTURE LOCATION CLEARLY INDICATED****② LARGE SCALE STREET, PLAT OR PARCEL MAP** (available from most property appraiser web sites)**③ PHOTO OF MAIN FACADE, DIGITAL IMAGE FILE**When submitting an image, it must be included in digital **AND** hard copy format (plain paper grayscale acceptable).  
Digital image must be at least 1600 x 1200 pixels, 24-bit color, jpeg or tiff.



**PHOTOGRAPHS**





## AERIAL MAP





USGS Fort Myers  
Township 43 South, Range 25 East, Section 12



☒ Original  
☐ Update



# HISTORICAL STRUCTURE FORM

## FLORIDA MASTER SITE FILE

Version 5.0 3/19

Site#8 **LL02730**  
 Field Date 10-19-2020  
 Form Date 10-20-2020  
 Recorder # \_\_\_\_\_

Shaded Fields represent the minimum acceptable level of documentation.  
 Consult the *Guide to Historical Structure Forms* for detailed instructions.

Site Name(s) (address if none) 20231 SR 31 Multiple Listing (DHR only) \_\_\_\_\_  
 Survey Project Name CRAS Tech Memo SR 31 SEIR, Lee/Charlotte County Survey # (DHR only) \_\_\_\_\_  
 National Register Category (please check one) ☒ building ☐ structure ☐ district ☐ site ☐ object  
 Ownership: ☐ private-profit ☐ private-nonprofit ☒ private-individual ☐ private-nonspecific ☐ city ☐ county ☐ state ☐ federal ☐ Native American ☐ foreign ☐ unknown

### LOCATION & MAPPING

Address: 20231 SR 31  
 Street Number Direction Street Name Street Type Suffix Direction  
 Cross Streets (nearest / between) NW intersection of SR 31 and Fox Hill Road  
 USGS 7.5 Map Name TUCKERS CORNER USGS Date 1957 Plat or Other Map \_\_\_\_\_  
 City / Town (within 3 miles) North Fort Myers In City Limits? ☐ yes ☐ no ☒ unknown County Lee  
 Township 43S Range 25E Section 1 ¼ section: ☐ NW ☐ SW ☐ SE ☐ NE Irregular-name: \_\_\_\_\_  
 Tax Parcel # 01-43-25-00-00003.003A Landgrant \_\_\_\_\_  
 Subdivision Name \_\_\_\_\_ Block \_\_\_\_\_ Lot \_\_\_\_\_  
 UTM Coordinates: Zone ☐ 16 ☒ 17 Easting 424308 Northing 2959882  
 Other Coordinates: X: \_\_\_\_\_ Y: \_\_\_\_\_ Coordinate System & Datum \_\_\_\_\_  
 Name of Public Tract (e.g., park) \_\_\_\_\_

### HISTORY

Construction Year: 1972 ☐ approximately ☐ year listed or earlier ☒ year listed or later  
 Original Use Residence, private From (year): 1972 To (year): CURR  
 Current Use \_\_\_\_\_ From (year): \_\_\_\_\_ To (year): \_\_\_\_\_  
 Other Use \_\_\_\_\_ From (year): \_\_\_\_\_ To (year): \_\_\_\_\_  
 Moves: ☐ yes ☒ no ☐ unknown Date: \_\_\_\_\_ Original address \_\_\_\_\_  
 Alterations: ☒ yes ☐ no ☐ unknown Date: \_\_\_\_\_ Nature Roofing, windows  
 Additions: ☒ yes ☐ no ☐ unknown Date: \_\_\_\_\_ Nature Porches  
 Architect (last name first): \_\_\_\_\_ Builder (last name first): \_\_\_\_\_  
 Ownership History (especially original owner, dates, profession, etc.)  
BARBARA ANN PUCKETT (2006), LACY EUGENE PUCKETT (1985), JOHN D. SAMOL

Is the Resource Affected by a Local Preservation Ordinance? ☐ yes ☐ no ☒ unknown Describe \_\_\_\_\_

### DESCRIPTION

Style Masonry Vernacular Exterior Plan Irregular Number of Stories 1  
 Exterior Fabric(s) 1. Concrete 2. Stucco 3.  
 Roof Type(s) 1. Gable 2. Hip 3.  
 Roof Material(s) 1. Composition shingles 2. 3.  
 Roof secondary strucs. (dormers etc.) 1. 2.

Windows (types, materials, etc.)  
independent, 1/1 SHS; picture

Distinguishing Architectural Features (exterior or interior ornaments)  
arched entryway, fixed shutters, slanted entry wall

Ancillary Features / Outbuildings (record outbuildings, major landscape features; use continuation sheet if needed.)  
 \_\_\_\_\_

DHR USE ONLY	OFFICIAL EVALUATION	DHR USE ONLY
NR List Date _____  <input type="checkbox"/> Owner Objection	SHPO – Appears to meet criteria for NR listing: <input type="checkbox"/> yes <input type="checkbox"/> no <input type="checkbox"/> insufficient info Date _____ Init. _____ KEEPER – Determined eligible: <input type="checkbox"/> yes <input type="checkbox"/> no Date _____ NR Criteria for Evaluation: <input type="checkbox"/> a <input type="checkbox"/> b <input type="checkbox"/> c <input type="checkbox"/> d (see <i>National Register Bulletin</i> 15, p. 2)	

**DESCRIPTION (continued)**Chimney: No. 0 Chimney Material(s): 1. \_\_\_\_\_ 2. \_\_\_\_\_Structural System(s): 1. Concrete block 2. \_\_\_\_\_ 3. \_\_\_\_\_Foundation Type(s): 1. Slab 2. \_\_\_\_\_Foundation Material(s): 1. Concrete, Generic 2. \_\_\_\_\_**Main Entrance (stylistic details)**

E elevation: through a single wooden, panel door with oval window within a recessed open porch with an arched entryway

**Porch Descriptions (types, locations, roof types, etc.)**

E elev.: recessed open porch with arched entryway beneath portion of a hip roof; W elev.: partial-width screen porch beneath a flat roof &amp; partial-width enclosed porch beneath a flat roof

Condition (overall resource condition): ☐ excellent ☐ good ☒ fair ☐ deteriorated ☐ ruinous**Narrative Description of Resource**

One-story Masonry Vernacular residence is in good condition, and retains most of its original exterior fabric. Overall a typical example of an altered Masonry Vernacular style residence found throughout Lee County and the state of Florida.

Archaeological Remains \_\_\_\_\_ ☐ Check if Archaeological Form Completed**RESEARCH METHODS (select all that apply)**

- |  |   |   |  |
|--|---|---|--|
| <input checked="" type="checkbox"/> FMSF record search (sites/surveys)                                       | <input type="checkbox"/> library research | <input type="checkbox"/> building permits         | <input type="checkbox"/> Sanborn maps              |
| <input type="checkbox"/> FL State Archives/photo collection  | <input type="checkbox"/> city directory   | <input type="checkbox"/> occupant/owner interview | <input type="checkbox"/> plat maps                 |
| <input checked="" type="checkbox"/> property appraiser / tax records   | <input type="checkbox"/> newspaper files  | <input type="checkbox"/> neighbor interview       | <input type="checkbox"/> Public Lands Survey (DEP) |
| <input type="checkbox"/> cultural resource survey (CRAS)   | <input type="checkbox"/> historic photos  | <input type="checkbox"/> interior inspection      | <input type="checkbox"/> HABS/HAER record search   |
| <input checked="" type="checkbox"/> other methods (describe) <u>USDA historic aerial photographs (PALMM)</u> |   |   |  |

**Bibliographic References (give FMSF manuscript # if relevant, use continuation sheet if needed)**Publication of Archival Library and Museum Materials (PALMM), accessible online at: <http://palmm.fcla.edu/>**OPINION OF RESOURCE SIGNIFICANCE**Appears to meet the criteria for National Register listing individually? ☐ yes ☒ no ☐ insufficient informationAppears to meet the criteria for National Register listing as part of a district? ☐ yes ☒ no ☐ insufficient information**Explanation of Evaluation (required, whether significant or not; use separate sheet if needed)**

The building is not a significant embodiment of a type, period, or method of construction; and has no known significant historic associations.

Area(s) of Historical Significance (see *National Register Bulletin 15*, p. 8 for categories: e.g. "architecture", "ethnic heritage", "community planning & development", etc.)

1. _____	3. _____	5. _____
2. _____	4. _____	6. _____

**DOCUMENTATION**

Accessible Documentation Not Filed with the Site File - including field notes, analysis notes, photos, plans and other important documents

- Document type All materials at one location Maintaining organization Archaeological Consultants Inc
- 1) Document description Files, photos, research, documents File or accession #'s P17007
- 2) Document type \_\_\_\_\_ Maintaining organization \_\_\_\_\_
- Document description \_\_\_\_\_ File or accession #'s \_\_\_\_\_

**RECORDER INFORMATION**Recorder Name Savannah Young Affiliation Archaeological Consultants IncRecorder Contact Information 8110 Blaikie Court, Ste. A / Sarasota, FL/ 34240 / aciflorida@comcast.net  
(address / phone / fax / e-mail)**Required Attachments****① USGS 7.5' MAP WITH STRUCTURE LOCATION CLEARLY INDICATED****② LARGE SCALE STREET, PLAT OR PARCEL MAP** (available from most property appraiser web sites)**③ PHOTO OF MAIN FACADE, DIGITAL IMAGE FILE**When submitting an image, it must be included in digital AND hard copy format (plain paper grayscale acceptable). Digital image must be at least 1600 x 1200 pixels, 24-bit color, jpeg or tiff.



**PHOTOGRAPHS**



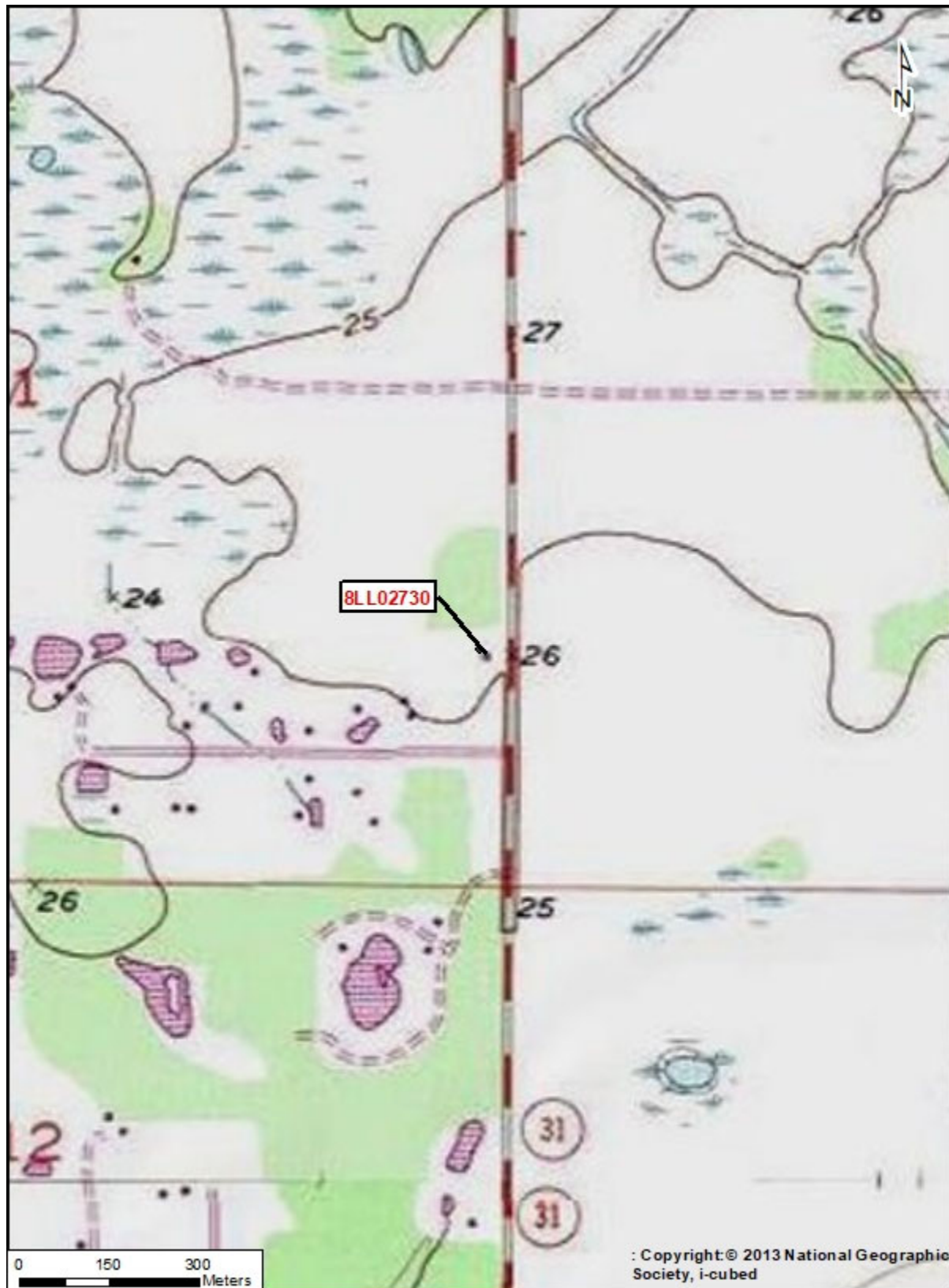


## AERIAL MAP





USGS Tuckers Corner  
Township 43 South, Range 25 East, Section 1





# RESOURCE GROUP FORM

## FLORIDA MASTER SITE FILE

Version 5.0 3/19

Site #8 **LL02845**  
 Field Date 10-19-2020  
 Form Date 10-20-2020  
 Recorder# \_\_\_\_\_

☒ Original  
☐ Update

Consult the *Guide to the Resource Group Form* for additional instructions

**NOTE: Use this form to document districts, landscapes, building complexes and linear resources** as described in the box below. Cultural resources contributing to the Resource Group should also be documented individually at the Site File. **Do not use this form for National Register multiple property submissions (MPSS).** National Register MPSS are treated as Site File manuscripts and are associated with the individual resources included under the MPS cover using the Site File manuscript number.

### Check ONE box that best describes the Resource Group:

- ☐ **Historic district** (NR category "district"): buildings and NR structures only: NO archaeological sites
- ☐ **Archaeological district** (NR category "district"): archaeological sites only: NO buildings or NR structures
- ☐ **Mixed district** (NR category "district"): includes more than one type of cultural resource (example: archaeological sites and buildings)
- ☐ **Building complex** (NR category usually "building(s)"): multiple buildings in close spatial and functional association
- ☐ **Designed historic landscape** (NR category usually "district" or "site"): can include multiple resources (see *National Register Bulletin #18*, page 2 for more detailed definition and examples: e.g. parks, golf courses, campuses, resorts, etc.)
- ☐ **Rural historic landscape** (NR category usually "district" or "site"): can include multiple resources and resources not formally designed (see *National Register Bulletin #30, Guidelines for Evaluating and Documenting Rural Historic Landscapes* for more detailed definition and examples: e.g. farmsteads, fish camps, lumber camps, traditional ceremonial sites, etc.)
- ☒ **Linear resource** (NR category usually "structure"): Linear resources are a special type of structure or historic landscape and can include canals, railways, roads, etc.

Resource Group Name SR 31 Multiple Listing [DHR only] \_\_\_\_\_  
 Project Name CRAS Tech Memo SR 31 SEIR, Lee/Charlotte County FMSF Survey # \_\_\_\_\_  
 National Register Category (please check one): ☐ building(s) ☒ structure ☐ district ☐ site ☐ object  
 Linear Resource Type (if applicable): ☐ canal ☐ railway ☒ road ☐ other (describe): \_\_\_\_\_  
 Ownership: ☐ private-profit ☐ private-nonprofit ☐ private-individual ☐ private-nonspecific ☐ city ☐ county ☒ state ☐ federal ☐ Native American ☐ foreign ☐ unknown

### LOCATION & MAPPING

Address: Street Number Direction Street Name Street Type Suffix Direction  
 City/Town (within 3 miles) North Fort Myers In Current City Limits? ☐ yes ☒ no ☐ unknown  
 County or Counties (do not abbreviate) Lee  
 Name of Public Tract (e.g., park) \_\_\_\_\_  
 1) Township 43S Range 25E Section 1, 12 ¼ section: ☐ NW ☐ SW ☐ SE ☐ NE Irregular-name: \_\_\_\_\_  
 2) Township 43S Range 26E Section 6, 7 ¼ section: ☐ NW ☐ SW ☐ SE ☐ NE  
 3) Township \_\_\_\_\_ Range \_\_\_\_\_ Section \_\_\_\_\_ ¼ section: ☐ NW ☐ SW ☐ SE ☐ NE  
 4) Township \_\_\_\_\_ Range \_\_\_\_\_ Section \_\_\_\_\_ ¼ section: ☐ NW ☐ SW ☐ SE ☐ NE  
 USGS 7.5' Map(s) 1) Name TUCKERS CORNER USGS Date 1957  
 2) Name \_\_\_\_\_ USGS Date \_\_\_\_\_  
 Plat, Aerial, or Other Map (map's name, originating office with location) \_\_\_\_\_  
 Landgrant \_\_\_\_\_  
 Verbal Description of Boundaries (description does not replace required map)  
Approximately 2 miles, spanning from CR 78 (Old Bayshore Road) to the Lee-Charlotte county line

DHR USE ONLY		OFFICIAL EVALUATION		DHR USE ONLY	
NR List Date	SHPO – Appears to meet criteria for NR listing: <input type="checkbox"/> yes <input type="checkbox"/> no <input type="checkbox"/> insufficient info	Date	Init. _____		
<input type="checkbox"/> Owner Objection	KEEPER – Determined eligible: <input type="checkbox"/> yes <input type="checkbox"/> no	Date	_____		
	NR Criteria for Evaluation: <input type="checkbox"/> a <input type="checkbox"/> b <input type="checkbox"/> c <input type="checkbox"/> d (see <i>National Register Bulletin 15</i> , p. 2)				

**HISTORY & DESCRIPTION**Construction Year: 1917 ☒approximately ☐year listed or earlier ☐year listed or later

Architect/Designer: \_\_\_\_\_ Builder: \_\_\_\_\_

Total number of individual resources included in this Resource Group: # of contributing \_\_\_\_\_ # of non-contributing \_\_\_\_\_

Time period(s) of significance (choose a period from the list or type in date range(s), e.g. 1895-1925)

1. Twentieth C American 3. \_\_\_\_\_

2. \_\_\_\_\_ 4. \_\_\_\_\_

Narrative Description (*National Register Bulletin 16A* pp. 33-34; attach supplementary sheets if needed)

SR 31 is a paved two-lane road that runs north-south from SR 80 in Lee County, through Charlotte County, to Arcadia in Desoto County. The road was formerly known as State Road 2 which connected the Georgia state line, Orlando, and Fort Myers.

**RESEARCH METHODS (check all that apply)**

- |   |   |   |  |
|---|---|---|--|
| <input checked="" type="checkbox"/> FMSF record search (sites/surveys)  | <input type="checkbox"/> library research | <input type="checkbox"/> building permits         | <input type="checkbox"/> Sanborn maps              |
| <input type="checkbox"/> FL State Archives/photo collection   | <input type="checkbox"/> city directory   | <input type="checkbox"/> occupant/owner interview | <input type="checkbox"/> plat maps                 |
| <input checked="" type="checkbox"/> property appraiser / tax records  | <input type="checkbox"/> newspaper files  | <input type="checkbox"/> neighbor interview       | <input type="checkbox"/> Public Lands Survey (DEP) |
| <input type="checkbox"/> cultural resource survey   | <input type="checkbox"/> historic photos  | <input type="checkbox"/> interior inspection      | <input type="checkbox"/> HABS/HAER record search   |
| <input checked="" type="checkbox"/> other methods (specify) <u>USDA historic aerial photographs (PALMM); FDOT</u> |   |   |  |

Bibliographic References (give FMSF Manuscript # if relevant)

PALMM, accessible online at: <http://palmm.fcla.edu/>; FDOT Official Transportation Map Timeline, accessible online at: [https://www.fdot.gov/docs/default-source/geospatial/past\\_statemap/maps/FLStatemap1926.pdf](https://www.fdot.gov/docs/default-source/geospatial/past_statemap/maps/FLStatemap1926.pdf)

**OPINION OF RESOURCE SIGNIFICANCE**Potentially eligible individually for National Register of Historic Places? ☐yes ☒no ☐insufficient informationPotentially eligible as contributor to a National Register district? ☐yes ☒no ☐insufficient informationExplanation of Evaluation (required, see *National Register Bulletin 16A* p. 48-49. Attach longer statement, if needed, on separate sheet.)

The resource group is not a significant embodiment of a type, period, or method of construction; and has no known significant historic associations.

Area(s) of Historical Significance (see *National Register Bulletin 15*, p. 8 for categories: e.g. "architecture", "ethnic heritage", "community planning & development", etc.)

1. \_\_\_\_\_ 3. \_\_\_\_\_ 5. \_\_\_\_\_  
2. \_\_\_\_\_ 4. \_\_\_\_\_ 6. \_\_\_\_\_

**DOCUMENTATION**

Accessible Documentation Not Filed with the Site File - including field notes, analysis notes, photos, plans and other important documents

- 1) Document type All materials at one location Maintaining organization Archaeological Consultants Inc  
Document description Files, photos, research, documents File or accession #'s P17007
- 2) Document type \_\_\_\_\_ Maintaining organization \_\_\_\_\_  
Document description \_\_\_\_\_ File or accession #'s \_\_\_\_\_

**RECORDER INFORMATION**

Recorder Name Savannah Young Affiliation Archaeological Consultants Inc  
Recorder Contact Information 8110 Blaikie Court, Ste. A / Sarasota, FL/ 34240 / aciflorida@comcast.net  
(address / phone / fax / e-mail)

**Required Attachments**

- ① PHOTOCOPY OF USGS 7.5' MAP WITH DISTRICT BOUNDARY CLEARLY MARKED
- ② LARGE SCALE STREET, PLAT OR PARCEL MAP WITH RESOURCES MAPPED & LABELED
- ③ TABULATION OF ALL INCLUDED RESOURCES - Include name, FMSF #, contributing? Y/N, resource category, street address or other location information if no address.
- ④ PHOTOS OF GENERAL STREETScape OR VIEWS (Optional: aerial photos, views of typical resources)  
When submitting images, they must be included in digital AND hard copy format (plain paper grayscale acceptable).  
Digital images must be at least 1600 x 1200 pixels, 24-bit color, jpeg or tiff.



**PHOTOGRAPHS**



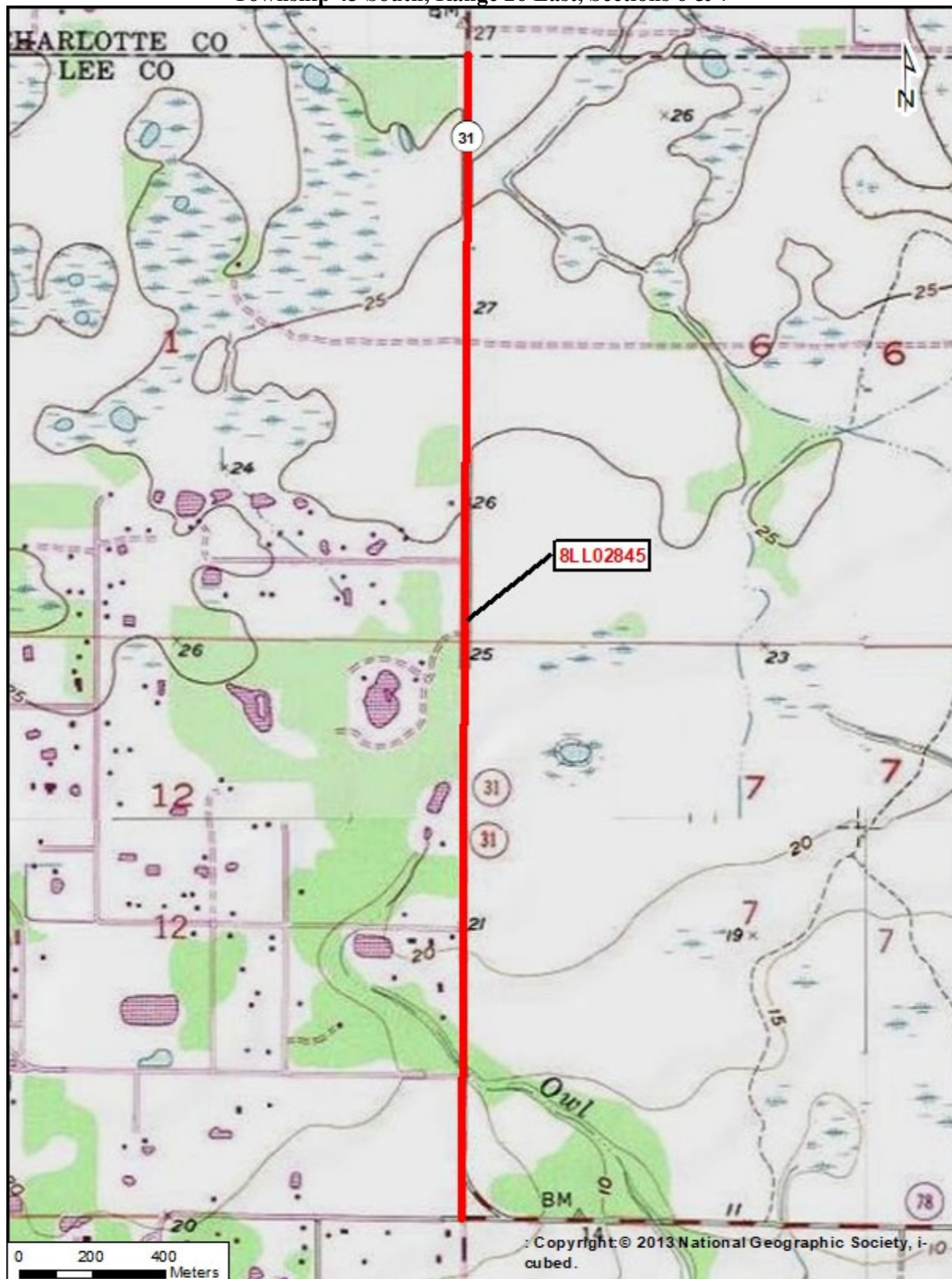


## AERIAL MAP





USGS Tuckers Corner  
Township 43 South, Range 25 East, Sections 1 & 12  
Township 43 South, Range 26 East, Sections 6 & 7



**Appendix B**  
**Survey Log**

Ent D (FMSF only) \_\_\_\_\_



# Survey Log Sheet

Florida Master Site File  
Version 4.1 1/07

Survey # (FMSF only) \_\_\_\_\_

Consult *Guide to the Survey Log Sheet* for detailed instructions.

## Identification and Bibliographic Information

**Survey Project** (name and project phase) CRAS, SR 31 SEIR from CR 78 (N River Rd) to North of Cook Brown Rd, Lee/Charlotte Counties, Florida

**Report Title** (exactly as on title page) Cultural Resource Assessment Survey for SR 31 State Environmental Impact Report (SEIR) from CR 78 to North of Cook Brown Road, Lee/Charlotte Counties, Florida; Financial Project ID No.: 428917-2-21-01

**Report Authors** (as on title page, last names first) 1. Archaeological Consultants, Inc. 3. \_\_\_\_\_  
2. \_\_\_\_\_ 4. \_\_\_\_\_

**Publication Date** (year) 2020 **Total Number of Pages in Report** (count text, figures, tables, not site forms) 28

**Publication Information** (Give series, number in series, publisher and city. For article or chapter, cite page numbers. Use the style of *American Antiquity*.)  
P17007, 2020, ACI, Sarasota

**Supervisors of Fieldwork** (even if same as author) Names Almy, Marion

**Affiliation of Fieldworkers:** Organization Archaeological Consultants Inc City Sarasota

**Key Words/Phrases** (Don't use county name, or common words like *archaeology, structure, survey, architecture, etc.*)

1. SR 31 3. N River Road 5. \_\_\_\_\_ 7. \_\_\_\_\_  
2. CR 78 4. Cook Brown Road 6. \_\_\_\_\_ 8. \_\_\_\_\_

**Survey Sponsors** (corporation, government unit, organization or person directly funding fieldwork)

Name \_\_\_\_\_ Organization Florida Dept of Transportation - District 1

Address/Phone/E-mail 801 North Broadway Avenue Bartow, Florida 33830

**Recorder of Log Sheet** Kim Irby **Date Log Sheet Completed** 11-4-2020

**Is this survey or project a continuation of a previous project?** ☒ No ☐ Yes: Previous survey #s (FMSF only)

## Mapping

**Counties** (List each one in which field survey was done; attach additional sheet if necessary)

1. Lee 3. \_\_\_\_\_ 5. \_\_\_\_\_  
2. Charlotte 4. \_\_\_\_\_ 6. \_\_\_\_\_

**USGS 1:24,000 Map Names/Year of Latest Revision** (attach additional sheet if necessary)

1. Name FORT MYERS Year 1958 4. Name \_\_\_\_\_ Year \_\_\_\_\_  
2. Name TUCKERS CORNER Year 1957 5. Name \_\_\_\_\_ Year \_\_\_\_\_  
3. Name \_\_\_\_\_ Year \_\_\_\_\_ 6. Name \_\_\_\_\_ Year \_\_\_\_\_

## Description of Survey Area

**Dates for Fieldwork:** Start 10-19-2020 End 10-20-2020 **Total Area Surveyed** (fill in one) \_\_\_\_\_ hectares 1,000 acres

**Number of Distinct Tracts or Areas Surveyed** \_\_\_\_\_

**If Corridor** (fill in one for each) **Width:** \_\_\_\_\_ meters \_\_\_\_\_ feet **Length:** \_\_\_\_\_ kilometers 4 miles

## Research and Field Methods

Types of Survey (check all that apply): ☒ archaeological ☒ architectural ☐ historical/archival ☐ underwater  
☐ damage assessment ☐ monitoring report ☐ other(describe): \_\_\_\_\_

Scope/Intensity/Procedures background research, surface reconnaissance, judgmental subsurface testing.  
22 shovel tests current CRAS; historic structures documented; report prepared

## Preliminary Methods (check as many as apply to the project as a whole)

☐ Florida Archives (Gray Building) ☐ library research- *local public* ☒ local property or tax records ☒ other historic maps  
☐ Florida Photo Archives (Gray Building) ☐ library-special collection - *nonlocal* ☐ newspaper files ☐ soils maps or data  
☒ Site File property search ☒ Public Lands Survey (maps at DEP) ☐ literature search ☒ windshield survey  
☒ Site File survey search ☐ local informant(s) ☐ Sanborn Insurance maps ☒ aerial photography  
☐ other (describe): \_\_\_\_\_

## Archaeological Methods (check as many as apply to the project as a whole)

☐ Check here if **NO** archaeological methods were used.  
☐ surface collection, controlled ☐ shovel test-other screen size ☐ block excavation (at least 2x2 m)  
☐ surface collection, uncontrolled ☐ water screen ☐ soil resistivity  
☒ shovel test-1/4" screen ☐ posthole tests ☐ magnetometer  
☐ shovel test-1/8" screen ☐ auger tests ☐ side scan sonar  
☐ shovel test 1/16" screen ☐ coring ☒ pedestrian survey  
☐ shovel test-unscreened ☐ test excavation (at least 1x2 m) ☐ unknown  
☐ other (describe): \_\_\_\_\_

## Historical/Architectural Methods (check as many as apply to the project as a whole)

☐ Check here if **NO** historical/architectural methods were used.  
☐ building permits ☐ demolition permits ☐ neighbor interview ☐ subdivision maps  
☐ commercial permits ☒ exposed ground inspected ☐ occupant interview ☐ tax records  
☐ interior documentation ☒ local property records ☐ occupation permits ☐ unknown  
☐ other (describe): \_\_\_\_\_

## Survey Results (cultural resources recorded)

Site Significance Evaluated? ☒ Yes ☐ No

Count of Previously Recorded Sites 1 Count of Newly Recorded Sites 6

Previously Recorded Site #'s with Site File Update Forms (List site #'s without "8". Attach additional pages if necessary.) CH02159

Newly Recorded Site #'s (Are all originals and not updates? List site #'s without "8". Attach additional pages if necessary.) LL02728-02730;

CH02720, CH02721; LL02825

Site Forms Used: ☒ Site File Paper Form ☐ Site File Electronic Recording Form

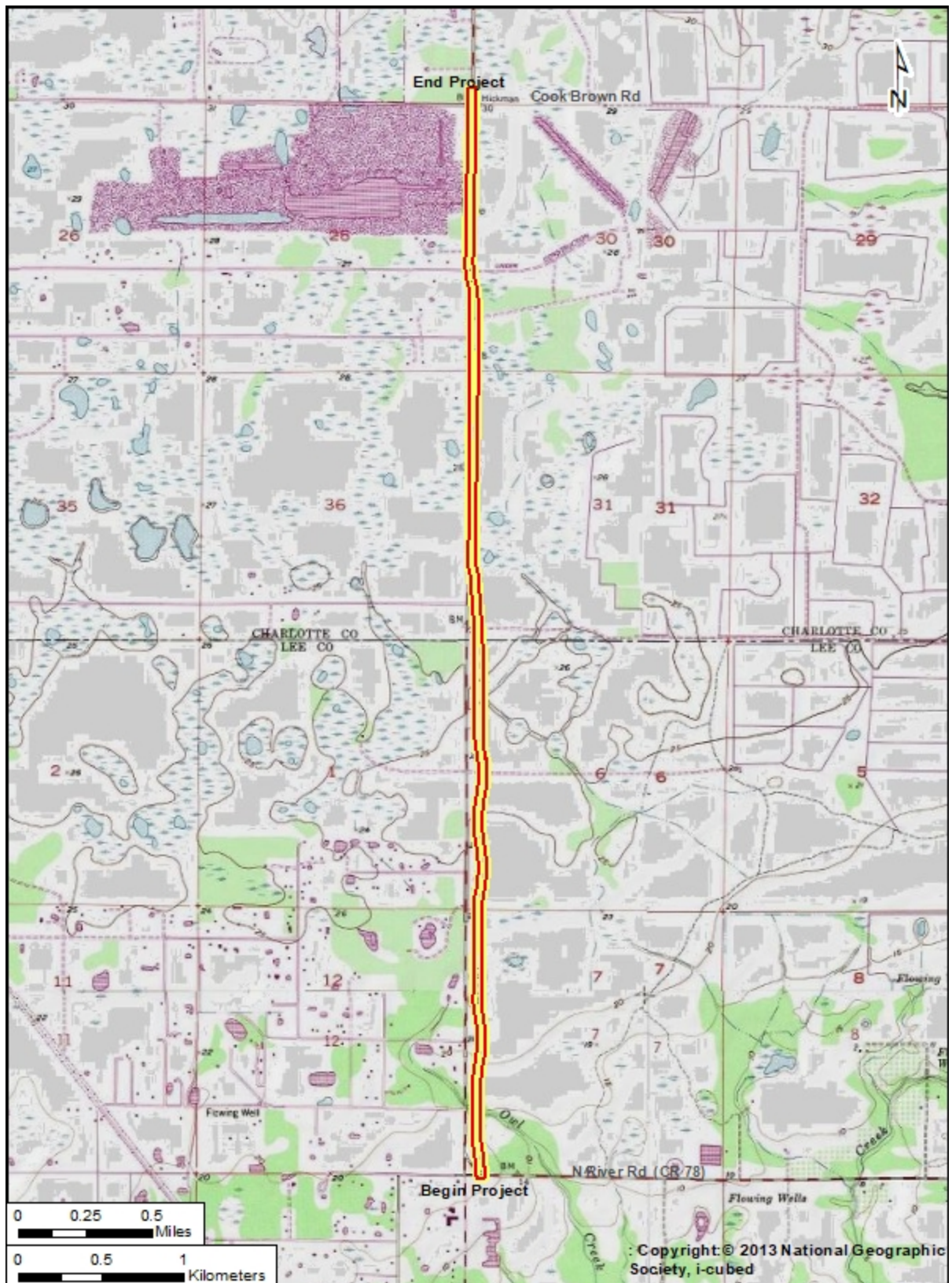
**\*\*\*REQUIRED: ATTACH PLOT OF SURVEY AREA ON PHOTOCOPY OF USGS 1:24,000 MAP(S)\*\*\***

## SHPO USE ONLY

## SHPO USE ONLY

## SHPO USE ONLY

Origin of Report: ☐ 872 ☐ CARL ☐ UW ☐ 1A32 # \_\_\_\_\_ ☐ Academic ☐ Contract ☐ Avocational  
☐ Grant Project # \_\_\_\_\_ ☐ Compliance Review: CRAT # \_\_\_\_\_  
Type of Document: ☐ Archaeological Survey ☐ Historical/Architectural Survey ☐ Marine Survey ☐ Cell Tower CRAS ☐ Monitoring Report  
☐ Overview ☐ Excavation Report ☐ Multi-Site Excavation Report ☐ Structure Detailed Report ☐ Library, Hist. or Archival Doc  
☐ MPS ☐ MRA ☐ TG ☐ Other: \_\_\_\_\_  
Document Destination: \_\_\_\_\_ Plotability: \_\_\_\_\_



#### CRAS Technical Memorandum

Township 40 South, Range 25 East, Section 36  
USGS Ft. Myers, 1958, Tuckers Corner, 1957  
Lee & Charlotte Counties, Florida

#### SR 31 SEIR from CR 78 to

#### North of Cook Brown Road

Lee & Charlotte Counties, Florida

FPID No: 428917-2-21-01