

Florida Department of Transportation District One Update on Current Projects

Sarasota/Manatee Metropolitan Planning Organization

February 28, 2022



DRIVERS

YIELD TO PEDESTRIANS WHEN MAKING
LEFT OR RIGHT-HAND TURNS

W 16 AV



fdotmiamidade.com/alerttodayflorida





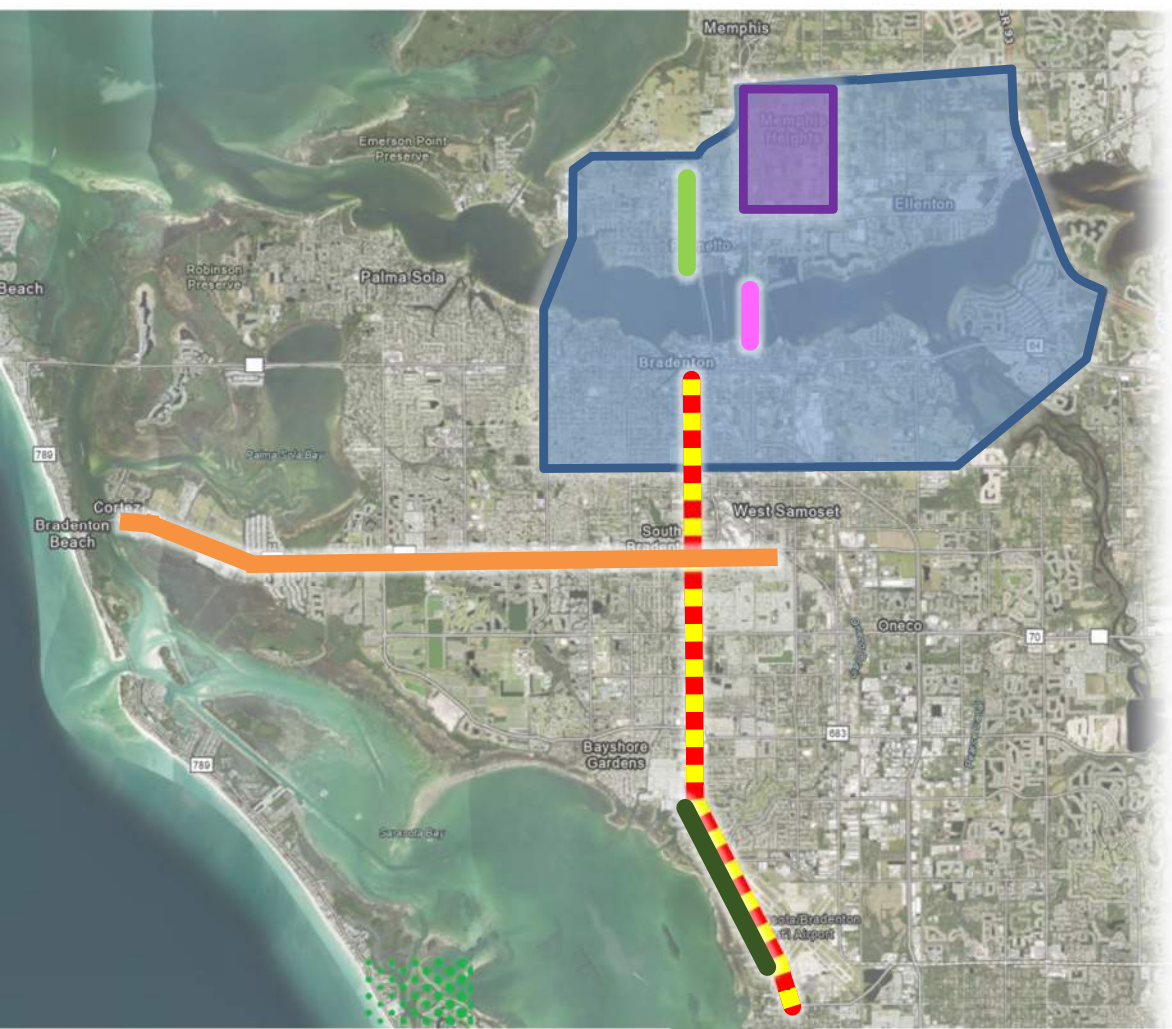
Update on Current Area Projects




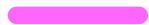




1. 10th Avenue Complete Street Study
2. Palmetto Trails Network Project Development & Environment (PD&E) Study
3. Bradenton-Palmetto Connector Alternative Corridors Evaluation (ACE) Study
4. Desoto Bridge PD&E Study
5. Sarasota/Manatee US 41 Corridor Mobility and Safety Study (CMASS)
6. US 41 Transit Choices Concept of Operations (ConOps)
7. US 41 Resurfacing from Edwards Drive to Magellan Drive
8. Cortez Corridor Visioning Plan





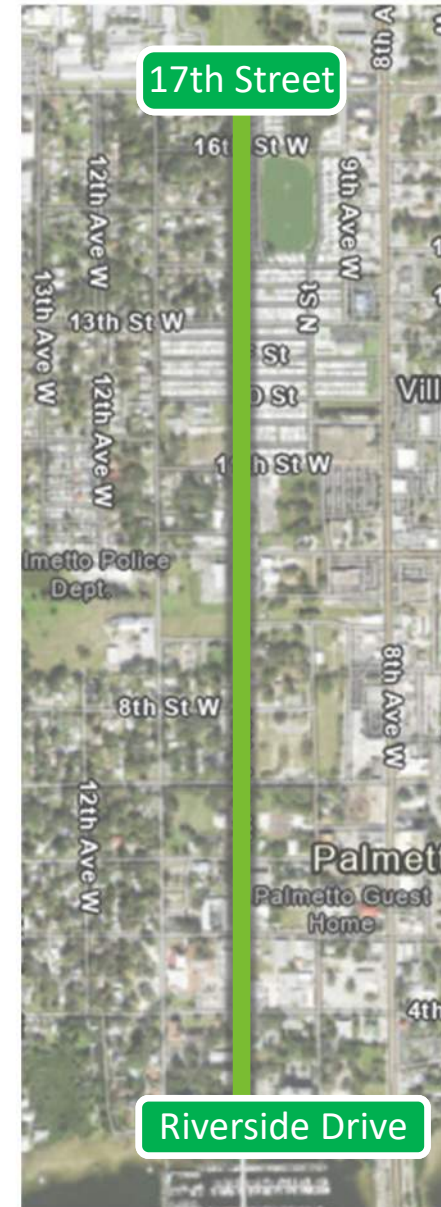
Update on Current Area Projects



-  10th Avenue Complete Street Study [FPID: 433142-2]
-  Palmetto Trails Network PD&E Study [FPID: 444857-1]
-  Bradenton-Palmetto Connector ACE Study [FPID: 444843-1]
-  Desoto Bridge PD&E Study [FPID: 442630-1]
-  Sarasota/Manatee US 41 CMASS [FPID: 440154-1]
-  US 41 Transit Choices ConOps
-  US 41 Resurfacing from Edwards Drive to Magellan Drive [FPID: 444612-1]
-  Cortez Corridor Visioning Plan

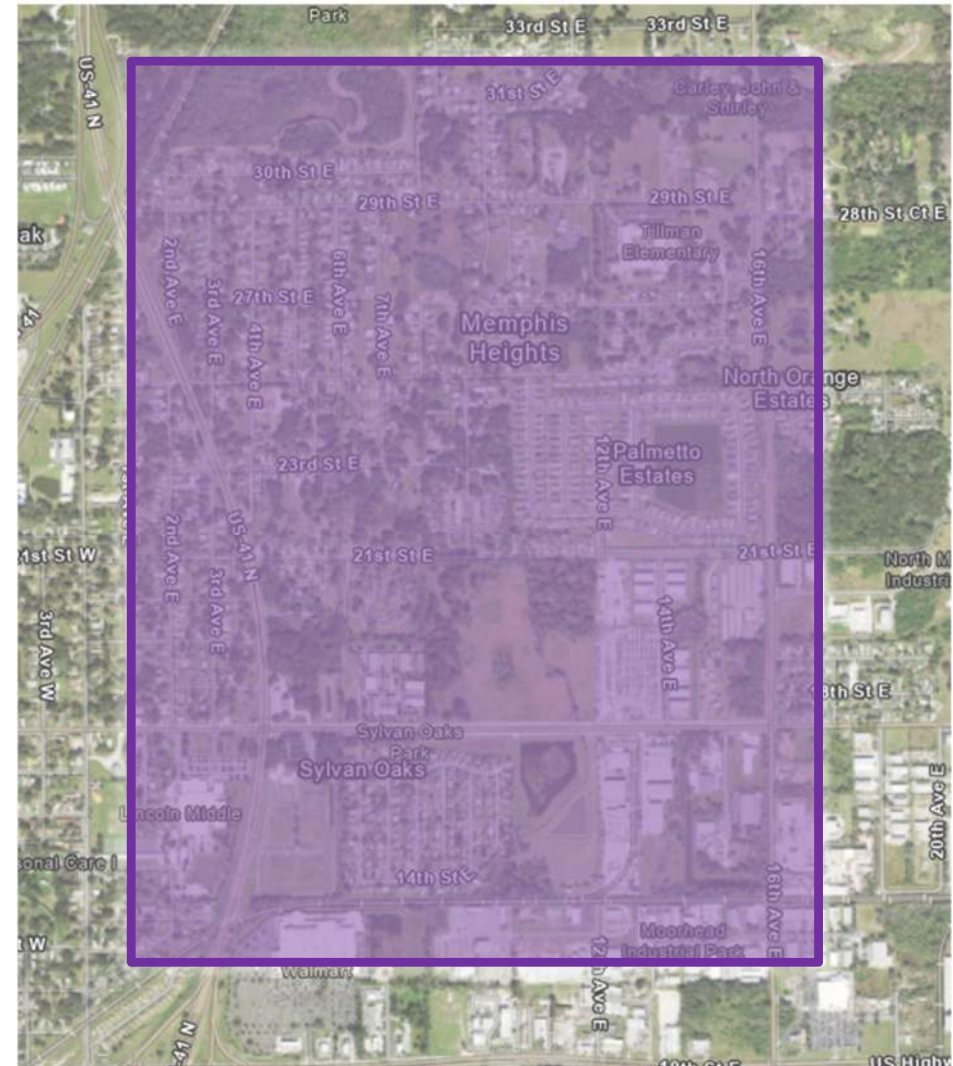
10th Avenue Complete Street Study [FPID: 433142-2]

- **Limits:** Riverside Drive to 17th Street
- **Location:** City of Palmetto
- **Description:** Multimodal improvements
- **Status:** Design Phase
- **Key Milestones:**
 - Phase II Plans: Fall 2022
 - Public Meeting: Late 2022
 - Phase IV Plans: Spring 2023



Palmetto Trails Network PD&E Study [FPID:444857-1]

- **Location:** City of Palmetto
- **Description:** Study of trail system to connect NE Palmetto to Lincoln Park, Lincoln Tunnel, etc.
- **Status:** PD&E Study
- **Key Milestones:**
 - Public Meeting: 1/27/22 & 2/2/22
 - Public Hearing: Early 2023
 - PD&E Completion: Spring 2023

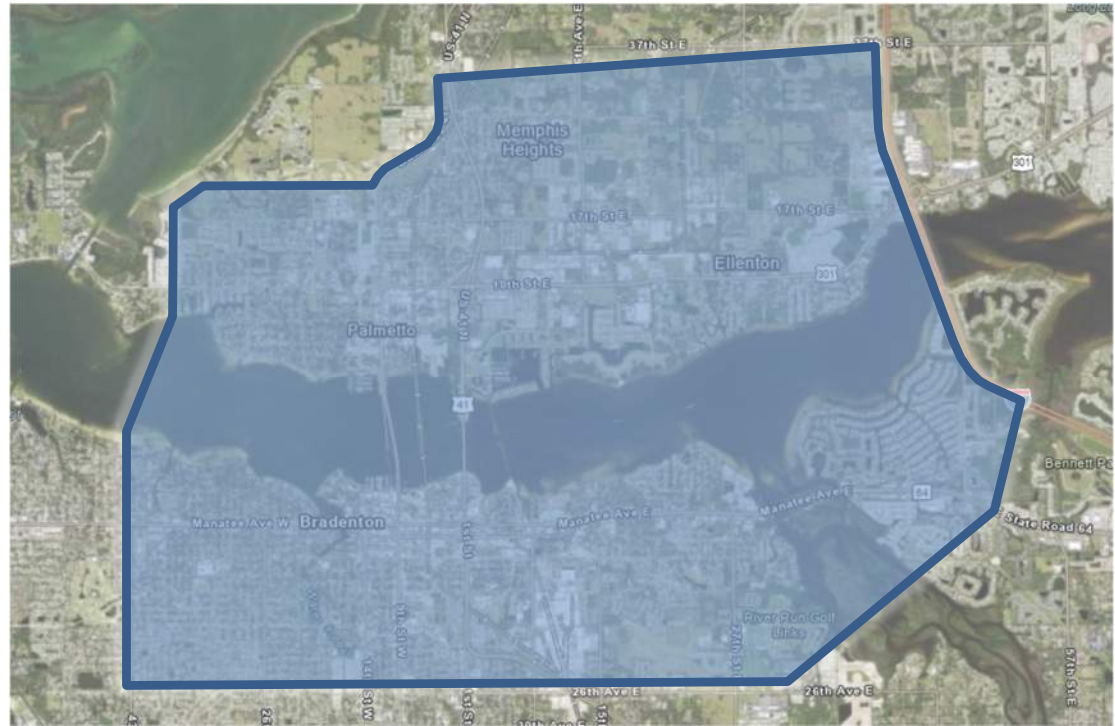


Palmetto Trails
NETWORK | PD&E STUDY



Bradenton-Palmetto Connector ACE Study [FPID: 444843-1]

- **Location:** Regional
- **Description:**
 - Determine capacity improvements to increase mobility between Bradenton & Palmetto
 - US 301 is key component
- **Status:** ACE Study
- **Key Milestones:**
 - Kickoff Meeting: Early 2022
 - Public Meetings: Spring & Fall 2022
 - Final Report: Late 2022



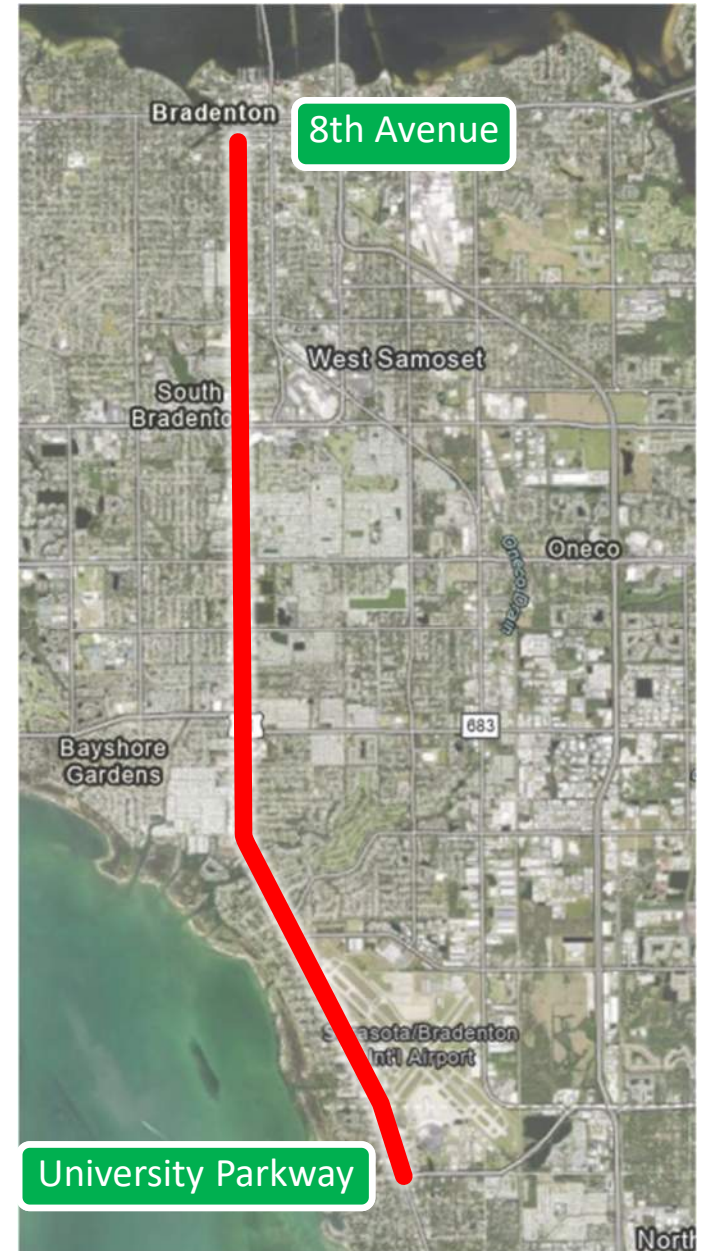
Desoto Bridge PD&E Study [FPID: 442630-1]

- **Limits:** 21st Avenue W to US 19
(Bridge #130053)
- **Location:** Manatee County
- **Description:** Improvements dependent on FPID 444843-1 – Bradenton-Palmetto Connector Ace Study
- **Status:** PD&E Phase
- **Key Milestones:**
 - Begin PD&E: FY 2023
 - Design Build: FY 2025



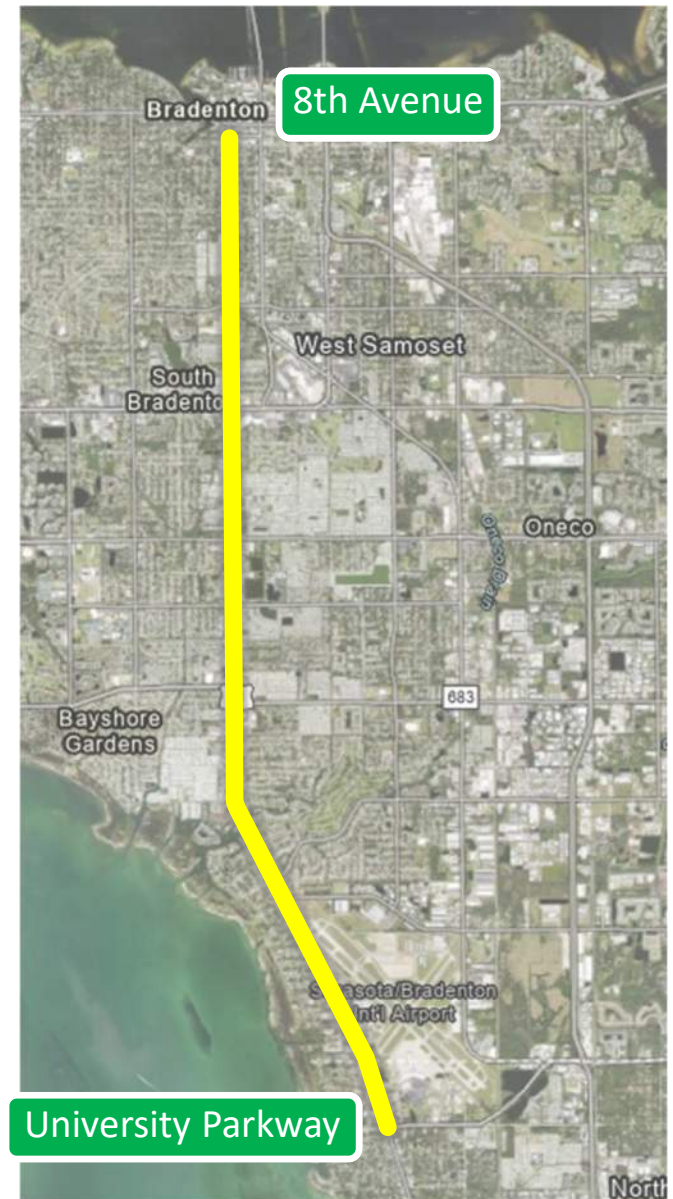
Sarasota/Manatee US 41 CMASS [FPID: 440154-1]

- **Limits:** University Parkway to 8th Avenue (including Airport & Downtown Bradenton transit hubs)
- **Location:** Regional
- **Description:** Enhance multimodal mobility (including transit prioritization options) & safety conditions along US 41/US 41 Business corridor
- **Status:** Feasibility Study – Phase I
- **Key Milestones:**
 - Begin Public Outreach: Early 2022
 - Engineering & Environmental Review: Late Spring 2023
 - Phase I Completion: Late Spring 2023



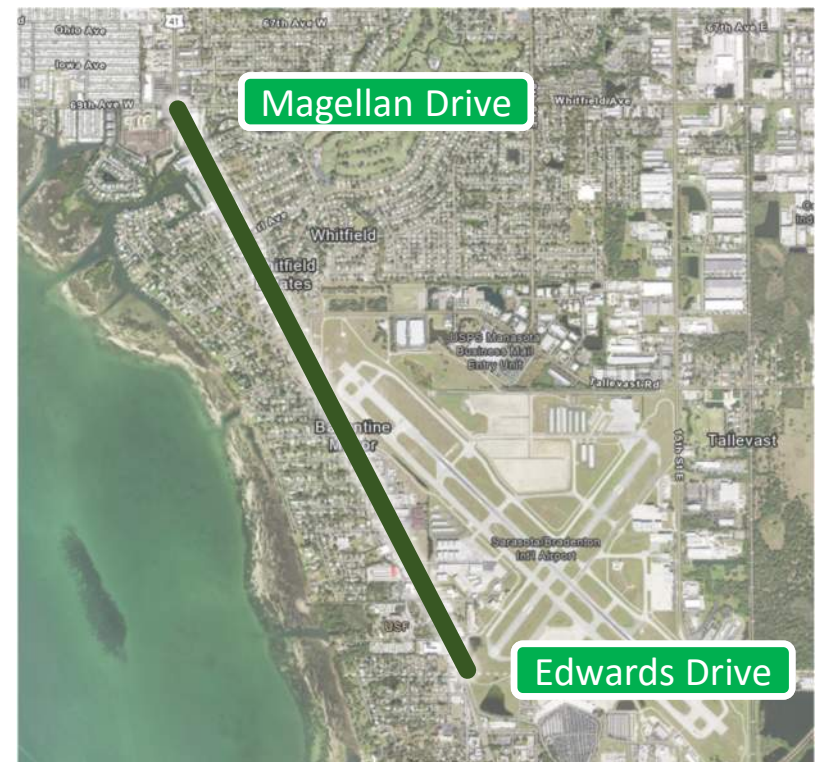
US 41 Transit Choices ConOps [Sarasota Manatee MPO project]

- **Limits:** University Parkway to 8th Avenue
- **Location:** Regional
- **Description:** Evaluate operating characteristics, potential risks associated with implementation, justification and analysis of the proposed system changes along US 41/US 41 Business corridor
- **Status:** ConOps Study
- **Key Milestones:**
 - Scenario Analysis: Spring 2022
 - Engineering Assessment: Summer 2022
 - Project Completion: Late Fall 2022



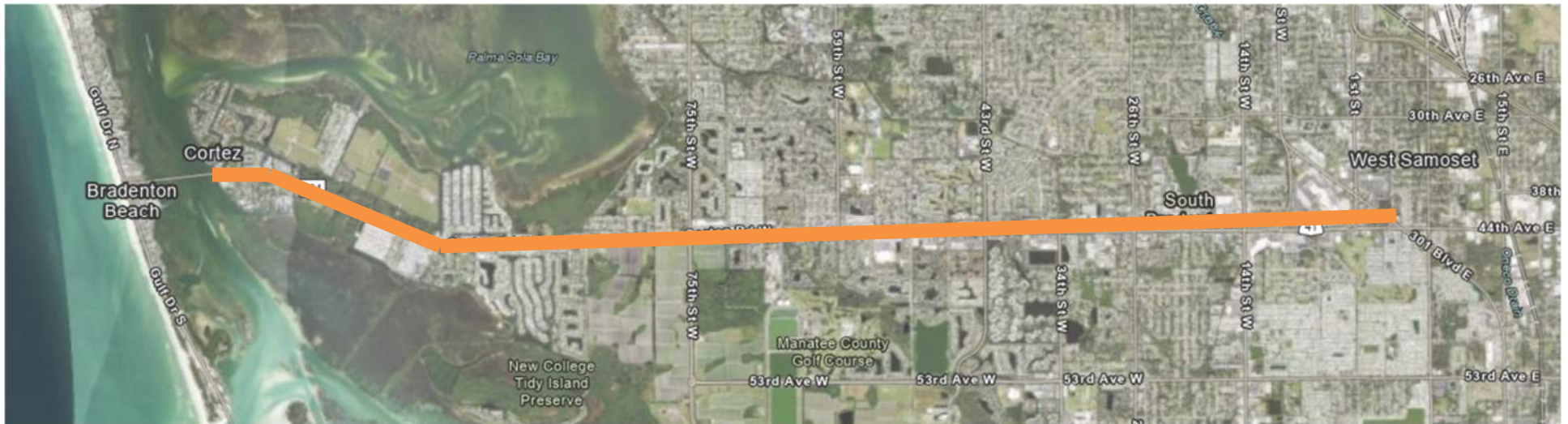
US 41 Resurfacing [FPID: 444612-1]

- **Limits:** Edwards Drive to Magellan Drive
- **Location:** Manatee County
- **Description:** Add median/resurface roadway/widen sidewalk
- **Status:** Design Phase
- **Key Milestones:**
 - Public Meeting: Late Spring 2022
 - Phase IIR Completion: Summer 2022
 - Phase IV Completion: Late Fall 2022



Cortez Corridor Visioning Plan [FPID: TBD]

- **Limits:** Gulf Drive to 301 Blvd East
- **Location:** Manatee County
- **Description:** Enhance mobility and safety along Cortez Rd corridor
- **Status:** Corridor Vision Plan
- **Key Milestones:**
 - Concurrence from Manatee County on Study scope
 - Kickoff: April 2022

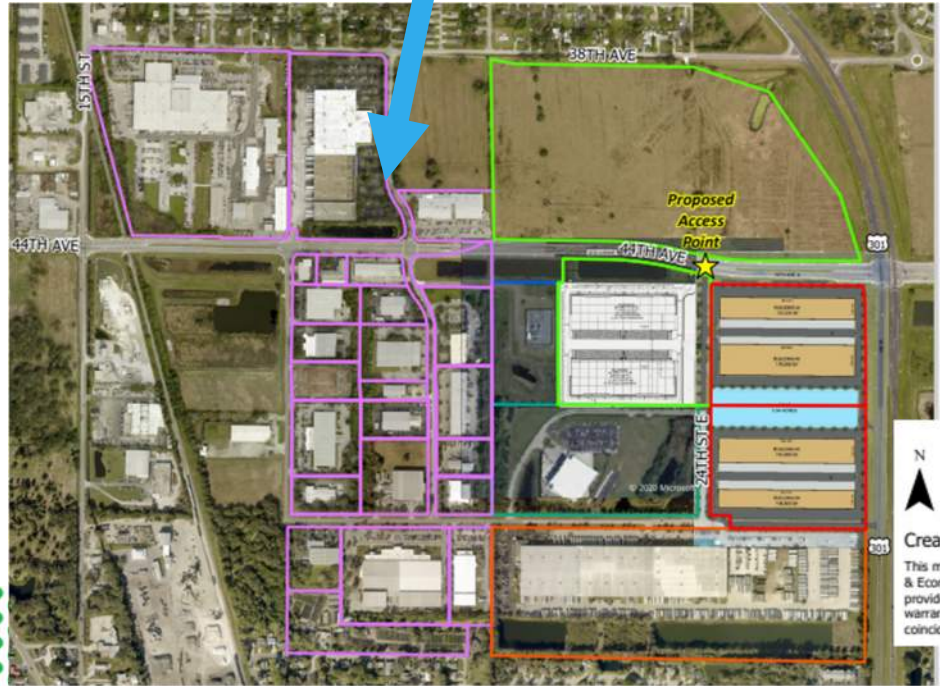


Other Development Considerations [Along 44th Ave]



Manatee County
FLORIDA

44th Ave East
Extension Projects



Manatee Logistics Area: Potential Plans

Created by: K. Kappler 11/24/21

This map was developed by the Manatee County Redevelopment & Economic Opportunity's Economic Development division. It is provided for general reference, is subject to change, and is not warranted for any particular use or purpose. Errors from non-coincidence of features from different sources may be present.



- ★ Proposed Access Point
- Red Outline Manatee Logistics
- Green Outline Shamrock
- Orange Outline Bealls
- Light Blue Outline Manatee County EOC
- Blue Outline FPL
- Purple Outline Other Industrial Parcels



THANK YOU!

CONTACT

Richard (OJ) Oujevolk

Project Development Manager, Environmental Management

Florida Department of Transportation District One

(863) 519-2293

Richard.Oujevolk@dot.state.fl.us