



**FLORIDA DEPARTMENT OF TRANSPORTATION
US 27 FROM CLOVERLEAF ROAD TO SR 66
HIGHLANDS COUNTY
CONSTRUCTION BEGINS MARCH 9, 2021**

Financial Project ID: 439434-1-52-01 & 439434-1-52-02

March 2021

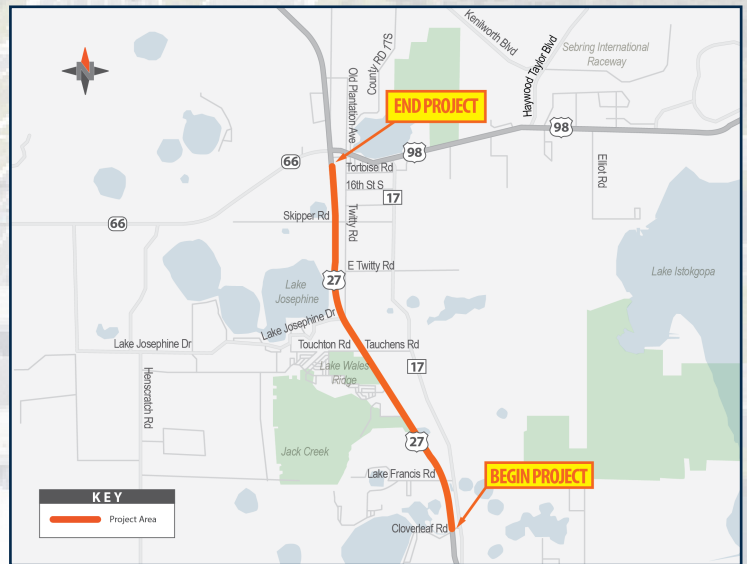
CONSTRUCTION PROJECT

The Florida Department of Transportation will begin work on March 9, 2021 to make improvements to US 27 from Cloverleaf Road to SR 66 in Highlands County. The project length is approximately six miles. The project limits are identified below on the project location map.

PROJECT IMPROVEMENTS

- Resurface US 27 from Cloverleaf Road to SR 66
- Modify median openings
- Add left turn lanes at Lake Josephine RV Resort and Heartland Animal Hospital
- Install curb and gutter, signage and pavement markers
- Replace guardrail
- Improve drainage
- Install new traffic signals at Twitty Road and Lake Josephine Drive
- Estimated construction cost is \$10 million

Project Location Map



Enlarged map on back page

PROJECT SCHEDULE

- Construction begins March 9 2021; estimated completion is spring 2022
- Daytime and nighttime lane closures may occur during construction on US 27 from Cloverleaf Road to SR 66, as needed, weather permitting

PROJECT CONTRACTOR

- C.W. Roberts Contracting, Inc.

CONTACT US

For more information about the improvements, contact:

Corine Burgess, Community Outreach Manager
(863) 225-0422
corine.burgess@dot.state.fl.us

Brian R. Rick, Public Information Specialist
(863) 519-2828
brian.rick@dot.state.fl.us

STAY INFORMED

by visiting

www.swflroads.com/current_projects

JOIN US ON THE WEB

www.SWFLroads.com | twitter.com/MyFDOT_SWFL | facebook.com/MyFDOTSWFL | instagram.com/myfdot_swfl



FLORIDA DEPARTMENT OF TRANSPORTATION
US 27 FROM CLOVERLEAF ROAD TO SR 66
HIGHLANDS COUNTY
CONSTRUCTION BEGINS MARCH 9, 2021

