



**FLORIDA DEPARTMENT OF TRANSPORTATION  
US 27 AT SR 60 INTERCHANGE IMPROVEMENT PROJECT  
US 27 CLOSURE & DETOUR ROUTES  
BEGINNING MID-SEPTEMBER 2022**

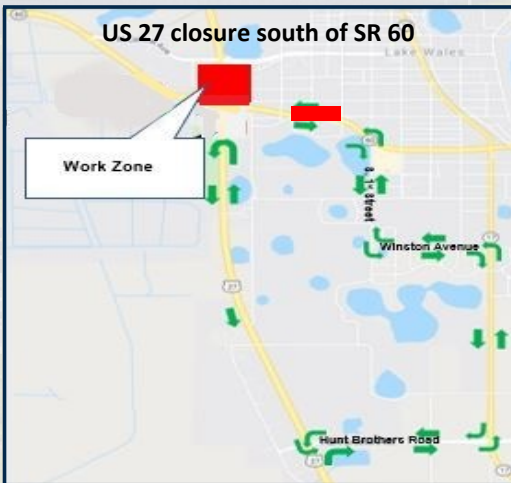
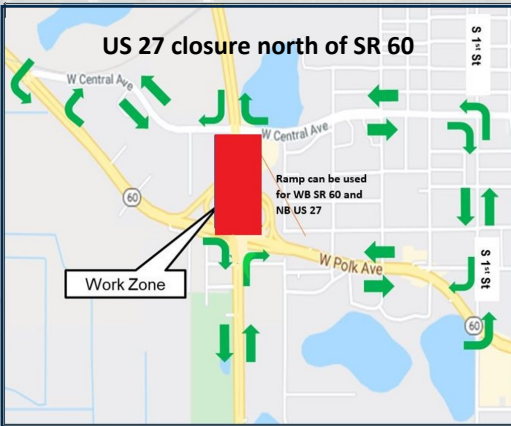
Financial Project ID: 419243-4-52-01

August 2022

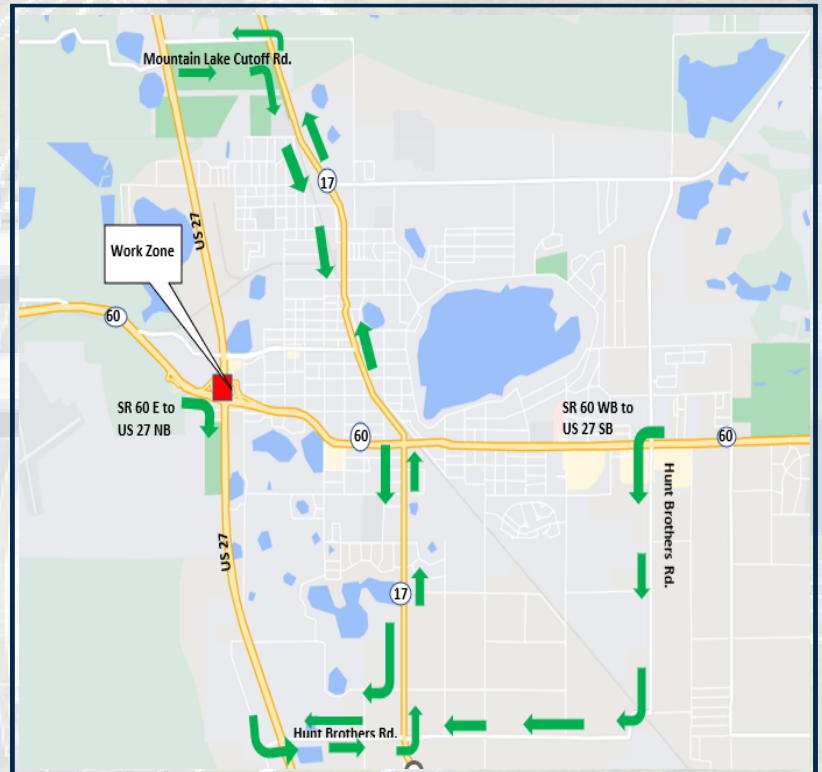
**US 27 CLOSURE/DETOURS FOR SETTING BEAMS FOR THE NEW BRIDGE**

In mid-September 2022, the Florida Department of Transportation’s contractor will close US 27 northbound at the SR 60 bridge and US 27 southbound at Central Avenue, to set beams for the new SR 60 bridge. The closure will be from 11 p.m., Friday, until 5 a.m., Monday. Detours will be in place for local traffic and commercial truck traffic. Signage will direct motorists to the detours, which are shown below. Law Enforcement will be on site to assist motorists. Please allow extra travel time and use caution in the construction zones.

**Local Traffic Detours**



**Commercial Vehicle Detour**



*Step by step detour directions located on back of page*

**CONTACT US**

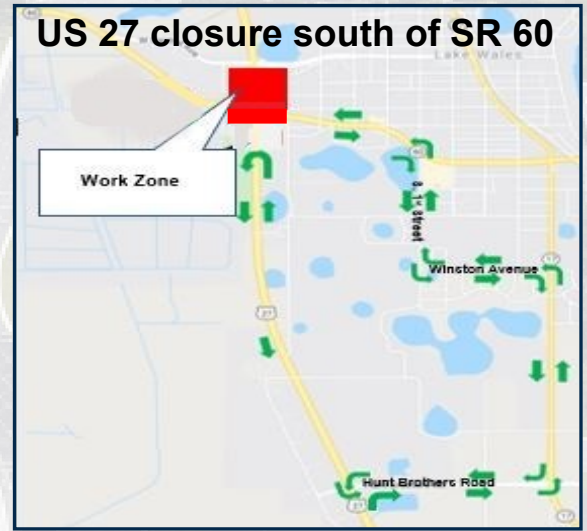
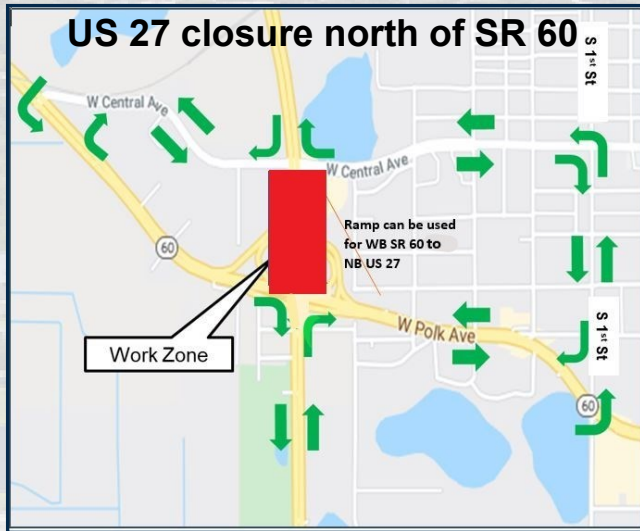
Corine Burgess  
Community Outreach Manager  
(863) 225-0422  
corine.burgess@dot.state.fl.us

or

Patricia Pichette  
Communications Specialist  
(863) 519-2743  
patricia.pichette@dot.state.fl.us

**FOLLOW US**

### Local Traffic Detours



#### US 27 Northbound

- SR 60 (EB)
- S. 1st St. (NB)
- W. Central Ave. (WB)
- US 27 (SB)

#### US 27 Southbound

- W. Central Ave. (WB)
- SR 60 (EB)
- West Frontage Rd.
- US 27 (SB)

#### US 27 Southbound

- SR 60 (EB)
- S. 1st St. (SB)
- Winston Ave. (EB)
- SR 17 (SB)
- Hunt Brothers Rd. (WB)
- US 2 (SB)

#### US 27 Northbound

- Reverse movements as Southbound detour
- US 27 Northbound (between SR 60 & Hunt Brothers Rd.)
- US 27 (NB) utilizes median U-turn to Hunt Brothers Rd.

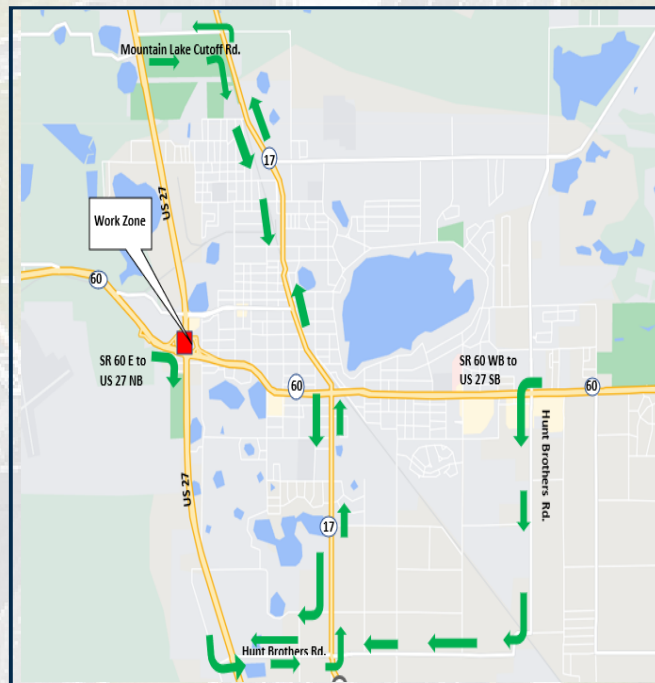
### Commercial Vehicle Detour

#### US 27 Southbound

- Mountain Lake Cutoff Rd. (EB)
- SR 17 (SB)
- Hunt Brothers Rd. (WB)
- US 27 (SB)

#### US 27 Northbound

Reverse movements as southbound detour



#### SR 60 Eastbound to US 27 Northbound

- West Frontage Road to US 27
- US 27 (SB)
- Hunt Brothers Rd. (EB)
- SR 17 (NB)
- Mountain Lake Cutoff Road (WB)

#### SR 60 Westbound to US 27 Southbound

- Hunt Brothers Rd. (SB)
- US 27 (SB)