



PUBLIC INVOLVEMENT PLAN

Florida Department of Transportation, District One

US 41 at Bonita Beach Road (County Road (CR) 865) PD&E Study

Lee County

FPID 444321-1-22-01

Federal Aid Project Number TBD

ETDM Number 6291

In accordance with Part 1, Chapter 11 of the Project Development and Environment (PD&E) Manual, this Public Involvement Plan is submitted to the manager of the District office in charge of PD&E studies as appropriate based on District organizational structure for his/her review and approval.

Submitted by: John R. Freeman, Jr. Date: 02/17/2020
John R. Freeman, Jr., P.E., PTOE, RSP, Kittelson & Associates

The environmental review, consultation, and other actions required by applicable federal environmental laws for this project are being, or have been, carried-out by FDOT pursuant to 23 U.S.C. § 327 and a Memorandum of Understanding dated December 14, 2016, and executed by FHWA and FDOT.

Approved by: Patrick Bateman Date: 2/17/2020
FDOT Project Manager Patrick Bateman, P.E., District One

Table of Contents

I. Description of Proposed Improvements 1
II. Project Background 3
III. Project Goals..... 3
IV. Identification of Elected/Appointed Officials and Agencies 4
V. Identification of Affected Communities and Stakeholders 7
VI. Outreach Activities 8
VII. Coordination with Local Agencies 12
VIII. Public Hearing 12
IX. Public Hearing Follow-Up..... 13
X. Public Involvement During Design 14

List of Figures

Figure 1 - Project Location Map 2
Figure 2 - Public Outreach Schedule..... 11

List of Appendices

- Appendix A: Initial Public Officials Contact List
- Appendix B: Demographic Information
- Appendix C: Initial Stakeholders Contact List
- Appendix D: Initial Property Owner Parcel Map and Mailing List

PUBLIC INVOLVEMENT PLAN

US 41 at Bonita Beach Road (County Road (CR) 865)

PD&E Study

Lee County

The purpose of this Public Involvement Plan (PIP) is to assist in providing information to and obtaining input from concerned citizens, agencies, private groups (residential/business), and governmental entities. The overall goal of this plan is to help ensure that the study reflects the values and needs of the communities it is designed to benefit.

This plan is in compliance with the Florida Department of Transportation's *Project Development and Environment (PD&E) Manual, Part 1, Chapter 11*.

I. Description of Proposed Improvements

Financial Project ID: 444321-1-22-01

Federal Aid Project Number: TBD

Project Limits: The study area for the US 41 at Bonita Beach Road (County Road (CR) 865) PD&E entails improving the operations at the intersection of US 41 and Bonita Beach Road (CR 865) in the City of Bonita Springs in Lee County. A map of the project limits is provided in Figure 1.

Proposed Activity: The purpose of the study is to address congestion and projected travel demand. Other goals of the project are to enhance mobility, improve safety conditions, and provide for multi-modal features in Lee County, Florida. Alternatives to be evaluated shall include a range of at-grade alternatives and bicycle and pedestrian facilities/facility enhancements will also be considered. As such, specific right-of-way requirements will be determined during the PD&E Study; additional right-of-way may be required depending on the Recommended Alternative. The no-build alternative will remain an option throughout the PD&E Study.

Tentative Class of Action: It is anticipated that the class of action for this project will be a Type 2 Categorical Exclusion.

Project Contact Information

For additional information regarding this project, contact:

[Patrick Bateman, P.E.](#)
FDOT District One Project Manager
801 North Broadway Avenue
Bartow, Florida 33830
Telephone: 863.519.2792
Email: patrick.bateman@dot.state.fl.us

[John R. Freeman, Jr., P.E., PTOE, RSP](#)
Consultant Project Manager
Kittelson & Associates
225 East Robinson Street, Suite 355
Orlando, FL 32801
Telephone: 407.540.0555
Email: jfreeman@kittelson.com

II. Project Background

The project area primarily consists of commercial, retail, office and residential land uses in the City of Bonita Springs, a U.S. Census Designated Place within Lee County. In the existing condition, the US 41 at Bonita Beach Road (CR 865) intersection is at-grade with two left turn lanes on each approach. US 41 is a six-lane 'Urban Principal Arterial', with a raised median and right turn lane, that runs the length of the project limits. Bonita Beach Road (CR 865) is a four-lane 'Urban Minor Arterial' with a raised median and turn/merge lanes at various locations. Sidewalks are present on both sides of US 41 and Bonita Beach Road (CR 865); however, marked bicycle lanes only exist on US 41. Two LeeTran bus routes, Routes 150 and 600, operate along US 41 and Bonita Beach Road (CR 865).

US 41 serves as a critical arterial facilitating the north-south movement of regional and local traffic, including truck traffic, as it runs parallel to Interstate 75 (I-75) along Florida's west coast. Similarly, Bonita Beach Road (CR 865) serves as a major east-west local roadway within Lee County, linking US 41 and I-75 and providing access, as one of two connections, between the mainland and coastal communities/tourist destinations such as Fort Myers Beach and other coastal attractions. Additionally, US 41 and Bonita Beach Road (CR 865) are designated emergency evacuation routes by the Florida Division of Emergency Management.

As part of the Bonita Beach Road Visioning Study, completed in November 2016, the US 41 / Bonita Beach Road intersection was identified as the "first priority" due to the lack of network connectivity in the area. The City then prepared the "Network Enhancement Alignment Study" completed in May 2017 which includes the "Quadrant Plan". This resulted in the quadrant roadway concept which is one of the alternatives being evaluated during the PD&E Study.

III. Project Goals

The following goals and objectives have been defined for this study:

- Create a unified vision for US 41 while accommodating the current and future needs of Collier County, Lee County, and the City of Bonita Springs.
- Improve the operations and level of service of the US 41 and Bonita Beach Road (CR 865) intersection
- Enhance east-west access between two primary north-south transportation corridors

(US 41 and I-75) as well as between the mainland and coastal communities/tourist destinations

- Enhance freight mobility and access within the area as both US 41 and Bonita Beach Road (CR 865) are designated as regional freight facilities in the Lee County 2040 Transportation Plan
- Increase the throughput of residents and tourists from coastal communities that can be evacuated during an emergency event by reducing the delay at the intersection connecting the two major evacuation routes
- Enhance access to facilities of the state evacuation route network
- Improve emergency response times
- Improve pedestrian/bicycle access, safety and circulation by modifying/limiting opportunities for conflicts between automobiles and pedestrians/bicyclists
- Enhance the performance and reliability of transit service by reducing delays at the intersection

IV. Identification of Elected/Appointed Officials and Agencies

Federal and State agencies, as well as Native American Tribes, having a concern in this project due to jurisdictional review or expressed interest have been identified and will be contacted directly by the Florida Department of Transportation (FDOT) through the Advance Notification (AN) process at the outset of the project in accordance with the PD&E Manual, Part 1, Chapter 3, Preliminary Environmental Discussion and Advance Notification. These contacts can be found in the AN package in the Environmental Screening Tool, project #6291. Visit <https://etdmpub.fl-a-etat.org> to view the Official Transmittal List in the AN Package. Subsequent contact list updates can be found in the Comments and Coordination Report.

Federal Agencies

U.S. Environmental Protection Agency
U.S. Army Corps of Engineers - District Commander
U.S. Department of Interior - U.S. Fish and Wildlife Service
U.S. Department of Interior - U.S. Geological Survey

Native American Tribes

Miccosukee Tribe of Indians Florida
Muscogee (Creek) Nation
Poarch Band of Creek Indians of Alabama
Seminole Nation of Oklahoma
Seminole Tribe of Florida

State Agencies

Florida Department of Agriculture and Consumer Services – Florida Forest Service, Lee County
Florida Department of Economic Opportunity
Florida Fish and Wildlife Conservation Commission – Southwest Region
Florida Department of Environmental Protection – Office of Greenways and Trails
Florida Department of Environmental Protection – Florida State Clearinghouse and Comprehensive Plan Review

Regional Agencies

The following Regional Agencies will also be contacted. As other concerned public agencies are identified throughout the study, they also will be listed and contacted. This list will be updated prior to each mailing. Subsequent contact list updates can be found in the Comments and Coordination Report.

[Bonita Springs Area Chamber of Commerce](#)
[Lee County Metropolitan Planning Organization \(MPO\)](#)
[South Florida Water Management District \(SFWMD\)](#)

Local Elected and Appointed Officials

The following elected officials will be contacted directly by FDOT. **Appendix A** lists contact information for the following elected officials at project execution. Subsequent contact list updates can be found in the Comments and Coordination Report.

Federal Delegation

U.S. Senator(s)
U.S. Representative, District [19](#)

Florida Senators for Local District

Senator, District [28](#)

Florida State House of Representatives for Local Districts

Representative, District [76](#)
Representative, District [106](#)

Lee County

Commissioner, District 1, [John Manning](#)
Commissioner, District 2, [Cecil Pendergrass](#)
Commissioner, District 3, [Ray Sandelli](#)
Commissioner, District 4, Chair [Brian Hamman](#)
Commissioner, District 5, Vice Chair [Frank Mann](#)
Clerk of Courts, [Linda Doggett](#)
Property Appraiser, [Kenneth Wilkinson](#)
School Board Member, District 1, Chair [Mary Fischer](#)
School Board Member, District 2, [Melisa Giovannelli](#)
School Board Member, District 3, [Chris Patricca](#)
School Board Member, District 4, Vice Chair [Debbie Jordan](#)
School Board Member, District 5, [Gynetta Gittens](#)
School Board Member, District 6, [Betsy Vaughn](#)
School Board Member, District 7, [Cathleen O’Daniel Morgan](#)
Sheriff, [Carmine Marceno](#)

Supervisor of Elections, [Tommy Doyle](#)
Tax Collector, [Larry Hart](#)

Assistant County Manager, CFO
Communications Director
Community Development Director
County Manager
Emergency Management Director
Facilities Construction & Management Director
Human and Veteran Services Director
Finance Director
LeeTran Director
Parks and Recreation Director
Public Safety Director
Public Works/ Transportation Director
Public Works/ Transportation Deputy Director
Public Works Project Manager Associate
Senior Manager, Traffic Operations
Superintendent Roads & Bridges/ DOT Operations
Superintendent of Schools
Utilities Director
Visitors & Convention Bureau Director

City of Bonita Springs

Mayor, [Peter Simmons](#)
Council Member, District 1, [Amy Quaremba](#)
Council Member, District 2, [Greg DeWitt](#)
Council Member, District 3, [Laura Carr](#)
Council Member, District 4, [Peter O’Finn](#)
Council Member, District 5, [Mike Gibson](#)
Council Member, District 6, [Fred Forbes](#)

Assistant City Manager/ Public Works Director
City Attorney
City Clerk
City Manager
Communications Director
Community Development Director
Finance Director
Fire Chief
Parks and Recreation Manager
Planning and Zoning Manager
Senior Project Manager
Utility Executive Director

Subsequent contact list updates can be found in the Comments and Coordination Report. Updates are expected to occur prior to the public meeting, the public hearing, and the LDCA acceptance.

V. Identification of Affected Communities and Stakeholders

This project is within the [City of Bonita Springs in Lee County](#). A map of the project area is provided on page 2 of this document. The study area is home to [the following demographics obtained through the Environmental Screening Tool \(EST\)'s Area of Interest Mapping feature](#). A 1,000-foot buffer was applied to the project limits and a [Sociocultural Data Report \(SDR\)](#) was generated.

Based on the American Community Survey (ACS) 2017 data provided in the SDR, the demographics of the population within the 1,000-foot buffer are as follows: 40.61% aged 65 and over, 7.63% below the poverty level, and 1.57% with less than 9th grade education.

Furthermore, the percent of the total population within the study area who reported that they speak English “not well” or “not at all” is approximately 1.72%. Based on an evaluation of the four LEP factors outlined in Chapter 11 of the PD&E Manual, it has been determined that bilingual translation and distribution of materials within the project vicinity will be not required for public outreach materials, the project website, and public meetings. However, staff providing Spanish translation services will be available at the public meeting and public hearing. Moreover, the District will translate project information via email or telephone conversation, as needed. See **Appendix B** for the Sociocultural Data Report.

The following local, state, and national public interest groups or organizations having a direct or expressed interest in the project study have been identified and will be contacted by the Florida Department of Transportation. **Appendix C** lists contact information for potential stakeholders.

[1000 Friends of Florida](#)
[Audubon of Southwest Florida](#)
[Florida Defenders of the Environment](#)
[Florida Sierra Club](#)
[Sierra Club – Florida Chapter, Calusa Group](#)
[Florida Wildlife Federation](#)
[The Nature Conservancy](#)
[Conservancy of Southwest Florida](#)
[Keep Lee County Beautiful, Inc.](#)
[Arroyal Mall Property Owners Association, Inc.](#)
[Spanish Wells Community Association, Inc.](#)
[Marbella at Spanish Wells Homeowners Association](#)
[The Woods Edge Villas Homeowners Association](#)
[Hacienda Village Homeowners Association](#)
[Bonita Village Community Association, Inc.](#)

Plus all public and private groups, organizations, agencies and/or businesses that request placement on the project mailing list.

VI. Outreach Activities

The following techniques will be used to notify the public of the proposed transportation improvement and to solicit public input into the project development process.

Newspapers:

The News-Press
breaking@news-press.com
239.992.1345

Naples Daily News
news@naplesnews.com
239.435.3435

Florida Weekly
news@floridaweekly.com
239.325.1960

Television:

WBBH – NBC
newstips@nbc-2.com
239.939.2020

WFTX – Fox
news@fox4now.com
239.206.FOX4

WGCU – PBS
rjohnson@wgcu.org
239.590.2300

WINK – CBS
tips@winknews.com
239.344.5000

WZVN – ABC
comments@abc-7.com
239.939.2020

SWFL - Univision
news@mediavista.tv
239.254.9995

Radio:

WARO – 94.5 FM
239.479.5506

WAVV – 101.1 FM
866.310.WAVV

WBTT - 105.5 FM
1.866.843.2328

WCKT – 107.1 FM
1.800.827.1071

WCCF – 100.9 FM
941.206.1580

WJGO – 102.9 FM
239.495.8383

WJPT – 106.3 FM
239.277.9600

WOLZ – 95.3 FM
1.800.226.3695

WRXK – 96.1 FM
239.277.9600

WTLQ – 97.7 FM
239.479.5580

WXKB – 103.9 FM
adam.star@bbgi.com

WXNX - 93.3 FM
239.479.5506

In addition to working with the media, different notification techniques will be used throughout the project development process. A brief description of these techniques is provided below.

Letters/Newsletters:

Invitational and informational letters and newsletters will be distributed to elected and appointed officials, property owners/tenants, business owners/operators, and interested parties as necessary. It is anticipated that **four** newsletters will be distributed for this study: [at the project kickoff, in advance of the](#)

alternatives public information meeting, in advance of the public hearing, and upon completion of the study. Notices may be hand delivered to residences and business located directly along the project corridor as deemed necessary by FDOT. Elected Officials will receive notification via email from the District Director of Transportation Development. Appointed officials will receive notification via email from the District Environmental Manager or designee.

News/Press Releases:

News/press releases will be submitted by the District’s Public Information Office (PIO) seven days prior to each public meeting and the public hearing. A press release will also be distributed to announce Federal Location and Design Concept Acceptance (LDCA) at the end of the study.

**Public Notices/
Legal Display Ads:**

Public advertisement will consist of a legal display published in the area newspaper with the largest circulation, *The News-Press* once prior to the public meeting, twice prior to the public hearing, and once to announce Federal Location and Design Concept Acceptance (LDCA) at the end of the study. Notices will also be published in *Florida Administrative Register* at these times.

Public Announcements:

To distribute PD&E study information, fliers will be made available to organizations such as neighborhood and civic groups, FDOT and Lee County, to publish in existing newsletters and websites. Any such correspondence will be coordinated through the District’s PIO.

**Direct Mail List
For Notifications:**

The following will be contacted by direct mail to obtain input throughout the project development process and/or to provide project information:

- Those whose property lies, in whole or part, within at least 300 feet on either side of the centerline of each project alternative (Section 339.155 FS), as well as other local citizens who may be impacted by the construction of this project. This portion of the mailing list will be based on the County Property Appraiser’s tax rolls. The actual mailing list was refined to remove duplicate property owner information for property owners that own multiple parcels. A map showing the parcels to receive these notifications can be found in **Appendix D**.
- Appointed public officials or individuals who request to be placed on the mailing list for this project. (Elected officials will receive notification via email from the District Director of Transportation Development.)

- Public and private groups, organizations, agencies, or businesses that request to be placed on the mailing list for this project.

Techniques:

Presentations to Local Officials: Presentations may be given to local officials and agencies such as the [City of Bonita Springs](#) and the [Lee County MPO](#) prior to the public information meeting(s) and the public hearing to apprise local officials of the project status, specific location and design concepts, and receive their comments.

Public Information Meetings: An Alternatives Public Meeting will be conducted as required by the FDOT, to present the project and the conceptual project alternatives being considered, and to obtain comments from the public. The public meeting will be informal and conducted in an open house format. Public meeting(s) must be advertised in the *Florida Administrative Register* and on the FDOT Public Meeting site at least seven days prior to the meeting.

Public Hearing: A formal public hearing, as required by Federal Regulations and State Law, will be held.

Informal Meetings: In addition to scheduled public meetings, there may be additional unscheduled meetings with the public, elected and appointed officials, public agencies, or civic groups. The purpose of these meetings will be to apprise the attendees of the project status, specific location and design concepts, and to receive input. The Department will be available with appropriate notice to attend meetings or make presentations.

Project Website: A project website will be developed to provide current project information to elected officials, agencies, and the public. The website will include the following pages:

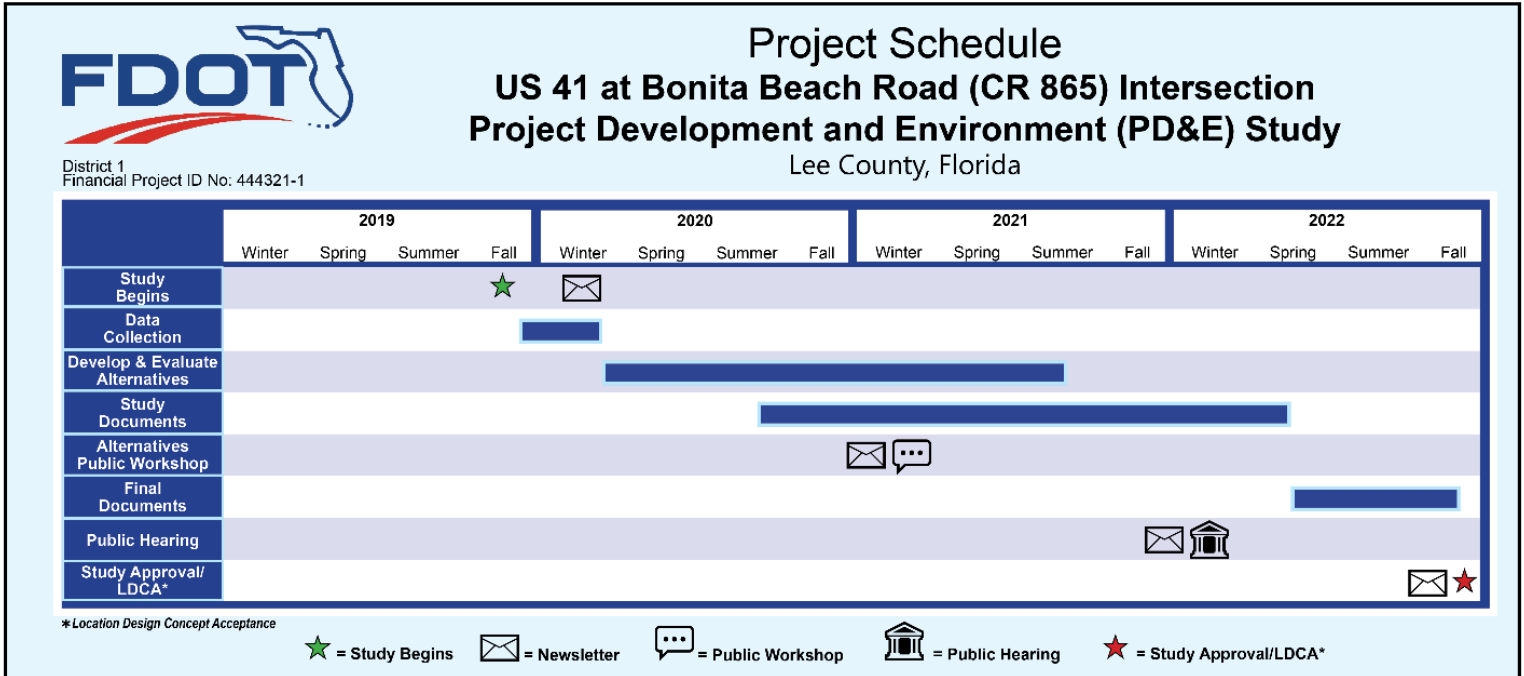
- [Home](#)
- [About the Study](#)
- [What is a PD&E Study](#)
- [Project Documents](#)
- [Public Involvement](#)
- [Project Schedule](#)
- [Links](#)

Links will be provided to allow the public to submit comment, sign up for the mailing list and to view or download project documents: The address for the website will be hosted on www.swflroads.com.

Public Outreach Activity Schedule:

Anticipated dates for public outreach activities are shown in Figure 2.

Figure 2 - Public Outreach Schedule



VII. Coordination with Local Agencies

Copies of aerial maps depicting all alignment and design concepts under consideration, along with draft copies of engineering and environmental study documentation, will be furnished to the County Engineers, with their review and written comments solicited. Updated information will also be forwarded to the county(s) for review and comment prior to the scheduled public hearing.

The Consultant will notify the Department's liaison for Lee County of project execution. The Department's liaison will coordinate with the Project Manager to schedule meetings with the [City of Bonita Springs and the Lee County MPO](#).

VIII. Public Hearing

In compliance with the Project Development and Environment (PD&E) Manual, 23 CFR 771, and Section 339.155, FS, a public hearing will be held.

- Public Hearing Site:** The public hearing will be held at an appropriate facility convenient to the study area.
- Public Advertisement:** A display advertisement will appear in *The News-Press* twice (at least 15 days and no more than 30 days) prior to the public hearing. All advertisements will be sent to local newspapers via email or by registered mail, return receipt requested.
- In addition, an announcement of the public hearing will be published in the *Florida Administrative Register* at least seven days prior to the public hearing.
- Letters of Invitation:** Letters will be mailed to all property owners as required by Section 339.155, FS, and to local elected and appointed government officials notifying them of the upcoming public hearing. Notices also will be hand-delivered to residences and businesses located directly along the project corridor as deemed necessary by the FDOT.
- Hearing Preparation:** Slide presentations and/or video presentations, project corridor aerial maps, graphics, and handouts will be prepared to supplement the oral public hearing presentation.
- Transcript:** A verbatim transcript of the public hearing will be compiled to include written comments received at the hearing and written comments received within the established comment period after the hearing. All public hearing documentation (handouts, presentation, graphics, etc.) will be included with the transcript. The transcript will include a script of the recorded presentation, if applicable.

**Documents for
Public Review:**

All draft documents to support PD&E studies will be available for public review at least 21 calendar days prior to the public hearing date.

**Locations for
Public Review:**

Public notice will be provided in the public hearing advertisement and by mail invitational letters as to where the study documents are located for public review. Project documents will also be available digitally on the project website.

Suggested public review sites are:

[Florida Department of Transportation, Southwest Area Office
District One
10041 Daniels Parkway
Fort Myers, FL 33912](#)

and

[Bonita Springs Public Library
10560 Reynolds St.
Bonita Springs, FL 34135](#)

**Title VI and
Related Statutes:**

Information about the Title VI Program will be provided in the presentation, by handout, signage, and through availability of personnel, on the Title VI Program and the Relocation Assistance Program.

**ADA
Compliance:**

Notification of the Department's intent to comply with the Americans with Disabilities Act (ADA) will be provided in the public advertisements for the public hearing, in invitational letters to property owners/tenants and local officials, in handouts, and by selection of a public hearing site that meets all ADA requirements.

IX. Public Hearing Follow-Up

The following procedures will occur after the public hearing.

Responses:

Responses to all letters received as a result of the hearing and questions and comments not answered at the public hearing will be made in writing.

**Recommendation
Notice:**

A legal notice announcing the Office of Environmental

Management's (OEM's) approval of the final document and recommendations will be published in *The News-Press*. In addition, a press release to local media, a newsletter to property owners, and an email to local officials may be included as a part of the recommendation notice.

Public Hearing

Transcript Package:

A Transcript Package will be produced per latest requirements by OEM and submitted following the Public Hearing. The Transcript Package will include the public hearing transcript prepared by an approved court reporter and an errata sheet detailing any transcript discrepancies, and may include handouts provided at the hearing, a copy of all correspondence received by the Department as part of the public hearing record, and affidavits of publication for newspaper ads advertising the hearing.

Comments and

Coordination Report:

A Comments and Coordination Report will be developed to summarize the public meeting results and recommendations. The report also will contain the overall input provided through the other public involvement techniques utilized in the project development process.

X. Public Involvement During Design

It is anticipated that the Design Project Manager will maintain the appropriate level of public involvement activities throughout the final design process. These public involvement activities may include additional coordination meetings with local government and environmental permitting agencies, work sessions, and small group meetings, as directed by FDOT.

Appendix A:
Initial Public Officials Contact List

ELECTED OFFICIALS

Organization	Address Title	First Name	Last Name	Title	E-mail Address	Address 1	Address 2	City, State Zip code
Lee County	The Honorable	Kenneth	Wilkinson	Property Appraiser	wilkinson@leepa.org	P.O. Box 1546		Fort Myers, FL 33902
Lee County	The Honorable	Linda	Doggett	Clerk of Courts	ldoggett@leclerk.org	P.O. Box 2469		Fort Myers, FL 33902
Lee County	The Honorable	Tommy	Doyle	Supervisor of Elections	elections@lee.vote	P.O. Box 2545		Fort Myers, FL 33902
Lee County	The Honorable	Larry	Hart	Tax Collector	larryh@leetc.com	P.O. Box 850		Fort Myers, FL 33902-0850
Lee County	The Honorable	Carmine	Marceno	Sheriff	CMarceno@sheriffleefl.org	14750 Six Mile Cypress Parkway		Fort Myers, FL 33912-4406
Lee County	The Honorable	John	Manning	Commissioner - District 1	dist1@leegov.com	2120 Main Street		Fort Myers, FL 33901
Lee County	The Honorable	Cecil	Pendergrass	Commissioner - District 2	dist2@leegov.com	2120 Main Street		Fort Myers, FL 33901
Lee County	The Honorable	Ray	Sandelli	Commissioner- District 3	dist3@leegov.com	2120 Main Street		Fort Myers, FL 33901
Lee County	The Honorable	Brian	Hamman	Chairman - District 4	dist4@leegov.com	2120 Main Street		Fort Myers, FL 33901
Lee County	The Honorable	Frank	Mann	Vice Chair - District 5	dist5@leegov.com	2120 Main Street		Fort Myers, FL 33901
Lee County Public Schools	The Honorable	Mary	Fischer	Chair - District 1	MaryBF@leeschools.net	2855 Colonial Boulevard		Fort Myers, FL 33966
Lee County Public Schools	The Honorable	Melisa	Giovannelli	School Board Member - District 2	MelisaWG@leeschools.net	2855 Colonial Boulevard		Fort Myers, FL 33966
Lee County Public Schools	The Honorable	Chris	Patricca	School Board- District 3	ChrisNP@leeschools.net	2855 Colonial Boulevard		Fort Myers, FL 33966
Lee County Public Schools	The Honorable	Debbie	Jordan	Vice Chair - District 4	DebbieJ@leeschools.net	2855 Colonial Boulevard		Fort Myers, FL 33966
Lee County Public Schools	The Honorable	Gwynetta	Gittens	School Board - District 5	GwynettaSG@leeschools.net	2855 Colonial Boulevard		Fort Myers, FL 33966
Lee County Public Schools	The Honorable	Betsy	Vaughn	School Board Member - District 6	ElizabethSV@leeschools.net	2855 Colonial Boulevard		Fort Myers, FL 33966
Lee County Public Schools	The Honorable	Cathleen	O'Daniel Morgan	School Board Member - District 7	CathleenOM@leeschools.net	2855 Colonial Boulevard		Fort Myers, FL 33966
Florida House of Representatives	The Honorable	Ray Wesley	Rodrigues	Florida House Representative, District 76	Ray.Rodrigues@myfloridahouse.gov	17595 South Tamiami Trail	Suite 218	Fort Myers, FL 33908-4570
Florida House of Representatives	The Honorable	Bob	Rommel	Florida House Representative, District 106	Bob.Rommel@myfloridahouse.gov; Kim.Timm@myfloridahouse.gov;			
Florida Senate	The Honorable	Kathleen	Passidomo	Florida Senator, District 28	passidomo.kathleen@flsenate.gov	3299 East Tamiami Trail	Suite 203	Naples, FL 34112
Bonita Springs City Council	The Honorable	Peter	Simmons	Mayor	peter.simmons@cityofbonitasprings.org	9101 Bonita Beach Road		Bonita Springs, FL 34135
Bonita Springs City Council	The Honorable	Amy	Quaremba	Council Member, District 1	amy.quaremba@cityofbonitasprings.org	9101 Bonita Beach Road		Bonita Springs, FL 34135
Bonita Springs City Council	The Honorable	Greg	DeWitt	Council Member, District 2	greg.dewitt@cityofbonitasprings.org	9101 Bonita Beach Road		Bonita Springs, FL 34135
Bonita Springs City Council	The Honorable	Laura	Carr	Council Member, District 3	laura.carr@cityofbonitasprings.org	9101 Bonita Beach Road		Bonita Springs, FL 34135
Bonita Springs City Council	The Honorable	Peter	O'Finn	Council Member, District 4	peter.oflinn@cityofbonitasprings.org	9101 Bonita Beach Road		Bonita Springs, FL 34135
Bonita Springs City Council	The Honorable	Mike	Gibson	Council Member, District 5	michael.gibson@cityofbonitasprings.org	9101 Bonita Beach Road		Bonita Springs, FL 34135
Bonita Springs City Council	The Honorable	Fred	Forbes	Council Member, District 6	fred.forbes@cityofbonitasprings.org	9101 Bonita Beach Road		Bonita Springs, FL 34135
United States House of Representatives	The Honorable	Francis	Rooney	Congressman, District 19	trevor.brown@mail.house.gov	1039 SE 9th Avenue	Suite 308	Cape Coral, FL 33990
United States Senate	The Honorable	Rick	Scott	United States Senator	collin_lomagistro@rickscott.senate.gov	3299 East Tamiami Trail	Suite 106	Naples, FL 34112
United States Senate	The Honorable	Marco	Rubio	United States Senator	Thomas_Self@rubio.senate.gov	3299 East Tamiami Trail	Suite 106	Naples, FL 34112

APPOINTED OFFICIALS

Organization	Address Title	First Name	Last Name	Title	E-mail Address	Email CC	Address 1	Address 2	City, State Zipcode
City of Bonita Springs	Ms.	Arleen	Hunter	City Manager	Arleen.Hunter@cityofbonitasprings.org		9101 Bonita Beach Road		Bonita Springs, FL 34135
City of Bonita Springs	Ms.	Debbie	Filipek	City Clerk	debbie.filipek@cityofbonitasprings.org		9101 Bonita Beach Road		Bonita Springs, FL 34135
City of Bonita Springs	Mr.	Matt	Feeney	Assistant City Manager/ Public Works Director	Matt.Feeney@cityofbonitasprings.org	bonitapublicworks@cityofbonitasprings.org	9101 Bonita Beach Road		Bonita Springs, FL 34135
City of Bonita Springs	Ms.	Lora	Taylor	Communications Director	lora.taylor@cityofbonitasprings.org		9101 Bonita Beach Road		Bonita Springs, FL 34135
City of Bonita Springs	Ms.	Ely	Soto McKuen	Senior Project Manager	Ely.McKuen@CityofBonitaSprings.org		9101 Bonita Beach Road		Bonita Springs, FL 34135
City of Bonita Springs	Mr.	John	Dulmer III, AICP	Community Development Director	jdulmer@cityofbonitaspringscd.org		9220 Bonita Beach Road	# 111	Bonita Springs, FL 34135
City of Bonita Springs	Ms.	Jacqueline	Toemmes Genson, AICP	Planning and Zoning Manager	jgenson@cityofbonitaspringscd.org		9220 Bonita Beach Road	# 111	Bonita Springs, FL 34135
City of Bonita Springs	Mr.	John	Jenkins	Utility Executive Director	jjenkins@bsu.us		11900 E. Terry Street		Bonita Springs, FL 34135
City of Bonita Springs	Ms.	Nicole	Perino	Parks and Recreation Manager	nicole.perino@cityofbonitasprings.org		26740 Pine Avenue		Bonita Springs, FL 34135
City of Bonita Springs	Ms.	Anne	Wright	Finance Director	anne.wright@cityofbonitasprings.org		9101 Bonita Beach Road		Bonita Springs, FL 34135
City of Bonita Springs	Chief	Joseph V.	Daigle	Fire Chief	daigle@bonitafire.org		27701 Bonita Grande Drive		Bonita Springs, FL 34135
Lee County	Mr.	Roger	Desjarlais	County Manager	RDesjarlais@leegov.com		2120 Main Street		Fort Myers, FL 33901
Lee County	Mr.	Randy	Cerchie	Public Works/ Transportation Director	RCerchie@leegov.com		1500 Monroe Street		Fort Myers, FL 33901
Lee County	Mr.	David	Murphy	Public Works/ Transportation Deputy Director	DMurphy@leegov.com		1500 Monroe Street		Fort Myers, FL 33901
Lee County	Mr.	Lee	Werst	Public Works Project Manager Associate	LCWerst@leegov.com		1500 Monroe Street		Fort Myers, FL 33901
Lee County	Mr.	Matthew	Graham	Superintendent Roads & Bridges/ DOT Operations	MGraham@leegov.com		1500 Monroe Street		Fort Myers, FL 33901
Lee County	Mr.	Mike	Berens	Senior Manager, Traffic Operations	MBerens@leegov.com		1500 Monroe Street		Fort Myers, FL 33901
Lee County	Mr.	David	Loveland	Community Development Director	DLoveland@leegov.com		1500 Monroe Street		Fort Myers, FL 33901
Lee County	Mr.	Andrew	Getch	Transportation Planning Operations, Manager	AGetch@leegov.com		1500 Monroe Street		Fort Myers, FL 33901
Lee County	Ms.	Pam	Keyes	Director, Public Utilities	PKeyes@leegov.com		7391 College Parkway		Fort Myers, FL 33907
Lee County	Mr.	Timothy	Gard	MSTBU Budget Coordinator	TGard@leegov.com		2201 Second Street	Suite 500	Fort Myers, FL 33901
Lee County	Mr.	John	Talmage	Director, Economic Development	JTalmage@leegov.com		2201 Second Street	Suite 500	Fort Myers, FL 33901
Lee County	Mr.	Pete	Winton	Assistant County Manager & CFO	PWinton@leegov.com	budget@leegov.com	2201 Second Street	Suite 500	Fort Myers, FL 33901
Lee County	Mr.	Jesse	Lavender	Parks and Recreation Director	JLavender@leegov.com		3410 Palm Beach Boulevard		Fort Myers, FL 33916
Lee County	Mr.	Benjamin	Abes	Public Safety Director, EMS Chief	Benjamin.Abes@leegov.com		P.O. Box 398		Fort Myers, FL 33902
Lee County	Ms.	Betsy	Clayton	Communications Director	bclayton@leegov.com		2115 Second Street		Fort Myers, FL 33901
Lee County	Mr.	Lee	Mayfield	Public Safety Director, EM	LMayfield@leegov.com		P.O. Box 398		Fort Myers, FL 33902
LeeTran	Mr.	Robert	Codie	Transit Director	RCodie@leegov.com		3401 Metro Parkway		Fort Myers, FL 33901
Lee County Visitors & Convention Bureau	Ms.	Tamara	Pigott	Director	TPigott@leegov.com		2201 Second Street	Suite 600	Fort Myers, FL 33901
Lee County Public Schools	Mr.	Gregory	Adkins	Superintendent of Schools	GregAD@leeschools.net		2855 Colonial Boulevard		Fort Myers, FL 33966
South Florida Water Management District	Mr.	Drew	Bartlett	Executive Director	DBartlett@sfwmd.gov	mahall@sfwmd.gov	3301 Gun Club Road		West Palm Beach, FL 33406
Lee County Metropolitan Planning Organization	Mr.	Donald	Scott	Executive Director	dscott@leempo.com	cbarraco@leempo.com	P.O. Box 150045		Cape Coral, Florida 33915-0045

AGENCIES

Organization	Address Title	First Name	Last Name	Title	E-mail Address	Address 1	Address 2	City, State, Zipcode
Florida Department of Agriculture and Consumer Services, Florida Forest Service, Lee County	Mr.	Clark	Ryals	County Forester	Clark.Ryals@FDACS.gov	10941 Palm Beach Boulevard		Fort Myers, FL 33905-5904
Florida Department of Economic Opportunity	Mr.	James D.	Stansbury	Chief	James.Stansbury@deo.myflorida.com	107 East Madison Street	Caldwell Building	Tallahassee, FL 32399-4120
Florida Department of Environmental Protection, Florida State Clearinghouse and Comprehensive Plan Review	Mr.	Chris	Stahl	State Clearinghouse Coordinator	Chris.Stahl@FloridaDEP.gov	3900 Commonwealth Boulevard	MS 47	Tallahassee, FL 32399-3000
Florida Department of Environmental Protection, Office of Greenways and Trails	Ms.	Samantha	Browne	Chief	samantha.browne@dep.state.fl.us	3900 Commonwealth Boulevard	MS 795	Tallahassee, Florida 32399-3000
Florida Department of State, Florida Division of Historical Resources	Mr.	Timothy	Parsons	Director, and State Historic Preservation Officer	timothy.parsons@dos.myflorida.com	500 S. Bronough Street		Tallahassee, FL 32399-0250
Florida Fish and Wildlife Conservation Commission	Mr.	Thomas	Graef	Southwest Regional Director	Thomas.Graef@myfwc.com	3900 Drane Field Road		Lakeland, FL 33811-1207
Florida Highway Patrol	Captain	Michael	Gideons	South District Commander	michaelgideons@fhsmv.gov	10041 Daniels Parkway		Fort Myers, FL 33913
U.S. Army Corps of Engineers	Mr.	Randy	Turner	Project Manager, Jacksonville Permits Section	randy.j.turner@usace.army.mil	P.O. Box 4970		Jacksonville, FL 32232
U.S. Department of the Interior, U.S. Fish and Wildlife Service, South Florida Ecological Services Office	Ms.	Roxanna	Hinzman	Field Supervisor	verobeach@fws.gov	1339 20th Street		Vero Beach, FL 32960
U.S. Department of the Interior, U.S. Geological Survey, Southeast Area	Ms.	Holly	Weyers	Regional Director	hsweyers@usgs.gov	1770 Corporate Drive	Suite 500	Norcross, GA, 30093
U.S. Environmental Protection Agency	Mr.	Chris	Militscher	Regional NEPA Coordinator	militscher.chris@epa.gov	61 Forsyth Street		Atlanta, GA 30303
Poarch Band of Creek Indians of Alabama	Ms.	Stephanie A.	Bryan	Tribal Chair	SEND BY MAIL	5811 Jack Springs Road		Atmore, AL 36502
Poarch Band of Creek Indians of Alabama	Ms.	Carolyn M.	White	Regulatory Affairs Division Director	THPO@pci-nsn.gov	30290 Josie Billie Highway	PMB 1004	Atmore, AL 36502
Seminole Nation of Oklahoma	Mr.	Greg	Chilcoat	Principal Chief	SEND BY MAIL	P.O. Box 1498		Wewoka, OK 74884
Seminole Nation of Oklahoma	Mr.	Brigita	Leader, MS	Interim Director/TCNS Coordinator	leader.bs@sno-nsn.gov	P.O. Box 1498		Wewoka, OK 74884
Seminole Tribe of Florida	Mr.	Marcellus W.	Osceola Jr.	Chairman	SEND BY MAIL	6300 Stirling Road		Hollywood, FL 33024
Seminole Tribe of Florida	Dr.	Paul N.	Backhouse, Ph.D.	Senior Director	SEND BY MAIL	30290 Josie Billie Highway	PMB 1004	Clewiston, FL 33440
Seminole Tribe of Florida	Mr.	Bradley	Mueller	Compliance Review Supervisor	THPOCompliance@semtribe.com	30290 Josie Billie Highway	PMB 1004	Clewiston, FL 33440
Seminole Tribe of Florida	Ms.	Victoria	Menchaca, MA	Compliance Review Specialist	VictoriaMenchaca@semtribe.com	30290 Josie Billie Highway	PMB 1004	Clewiston, FL 33440
Miccosukee Tribe of Indians of Florida	Mr.	Kevin	Donaldson	Environmental Specialist	kevind@miccosukeetribe.com	HC 61, SR Box 68 Old Loop Road		Ochopee, FL 34141
Muscogee (Creek) Nation	Ms.	Corain	Lowe-Zepeda	Tribal Historic Preservation Department	section106@mcn-nsn.gov	P.O. Box 580		Okmulgee, OK 74447

Appendix B:
Demographic Information

Sociocultural Data Report

Bonita Beach Rd - Feature 2

Area: 0.50 square miles
Jurisdiction(s): Cities: Bonita Springs
 Counties: Lee

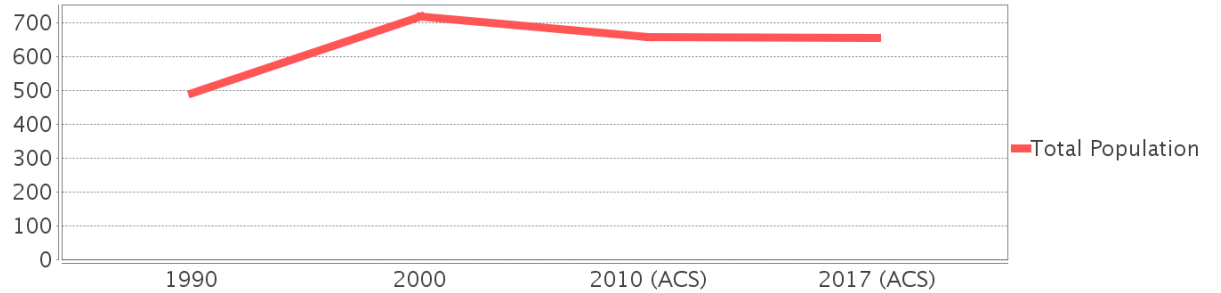
General Population Trends

Description	1990	2000	2010 (ACS)	2017 (ACS)
Total Population	492	718	657	655
Total Households	232	360	325	334
Average Persons per Acre	1.98	2.65	3.23	3.34
Average Persons per Household	2.16	2.01	2.00	1.96
Average Persons per Family	2.45	2.44	2.50	2.76
Males	237	351	323	306
Females	255	366	334	349

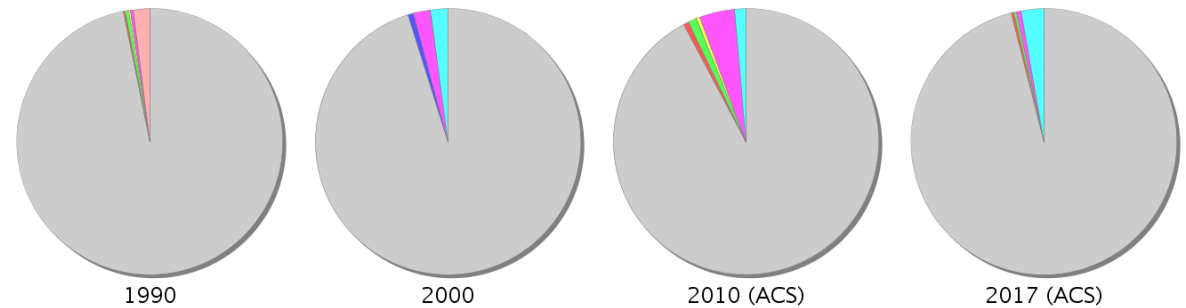
Race and Ethnicity Trends

Description	1990	2000	2010 (ACS)	2017 (ACS)
White Alone	487 (98.98%)	683 (95.13%)	606 (92.24%)	628 (95.88%)
Black or African American Alone	1 (0.20%)	0 (0.00%)	4 (0.61%)	2 (0.31%)
Native Hawaiian and Other Pacific Islander Alone	0 (0.00%)	5 (0.70%)	0 (0.00%)	0 (0.00%)
Asian Alone	2 (0.41%)	0 (0.00%)	7 (1.07%)	2 (0.31%)
American Indian or Alaska Native Alone	1 (0.20%)	0 (0.00%)	3 (0.46%)	0 (0.00%)
Some Other Race Alone	2 (0.41%)	15 (2.09%)	28 (4.26%)	4 (0.61%)
Claimed 2 or More Races	NA (NA)	15 (2.09%)	9 (1.37%)	18 (2.75%)
Hispanic or Latino of Any Race	10 (2.03%)	54 (7.52%)	87 (13.24%)	31 (4.73%)
Not Hispanic or Latino	482 (97.97%)	664 (92.48%)	570 (86.76%)	624 (95.27%)
Minority	14 (2.85%)	58 (8.08%)	104 (15.83%)	55 (8.40%)

Population

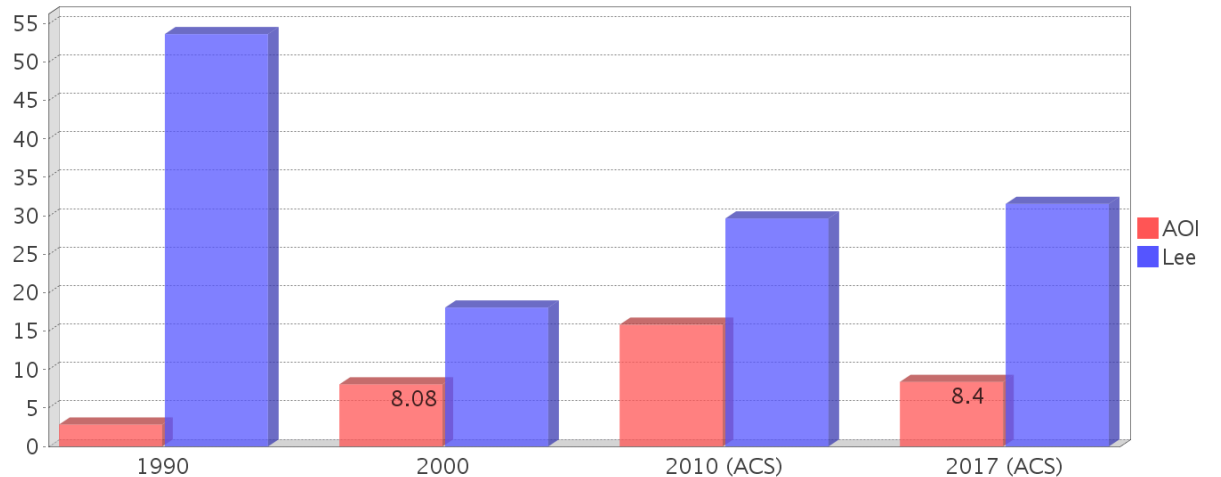


Race



Legend for Race Pie Charts:
 ● White Alone ● Black or African American Alone ● Native Hawaiian and Other Pacific Islander Alone
 ● Asian Alone ● American Indian or Alaska Native Alone ● Some Other Race Alone
 ● Claimed 2 or More Races (after 1990) ● Hispanic or Latino of Any Race (1990 only)

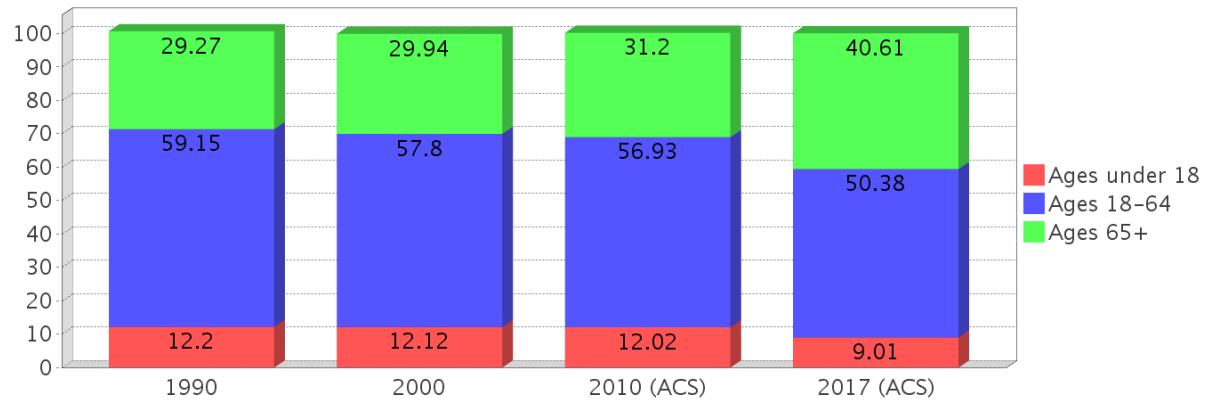
Minority Percentage Population



Age Trends

Description	1990	2000	2010 (ACS)	2017 (ACS)
Under Age 5	4.27%	3.76%	3.65%	1.98%
Ages 5-17	7.93%	8.36%	8.37%	7.02%
Ages 18-21	3.25%	1.95%	2.74%	2.60%
Ages 22-29	8.94%	9.89%	7.91%	5.34%
Ages 30-39	13.62%	9.61%	8.68%	10.69%
Ages 40-49	10.77%	15.46%	12.94%	9.31%
Ages 50-64	22.56%	20.89%	24.66%	22.44%
Age 65 and Over	29.27%	29.94%	31.20%	40.61%
-Ages 65-74	18.50%	17.83%	18.11%	23.97%
-Ages 75-84	8.94%	9.75%	10.50%	12.98%
-Age 85 and Over	1.83%	2.37%	2.44%	3.66%
Median Age	NA	54	55	60

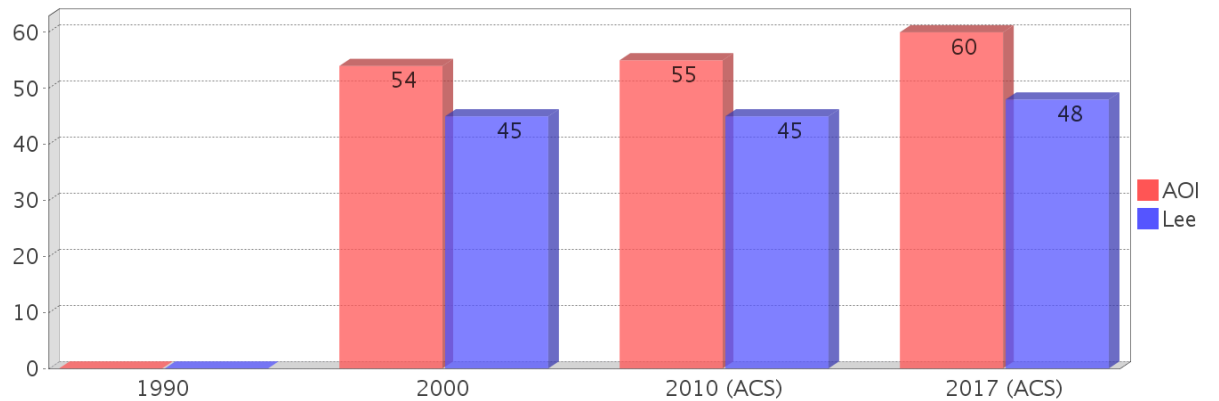
Percentage Population by Age Group



Income Trends

Description	1990	2000	2010 (ACS)	2017 (ACS)
Median Household Income	\$32,202	\$51,601	\$57,479	\$62,300
Median Family Income	\$34,638	\$56,500	\$59,838	\$69,902
Population below Poverty Level	5.69%	2.51%	12.94%	7.63%
Households below Poverty Level	9.05%	3.33%	9.23%	7.49%
Households with Public Assistance Income	0.86%	1.11%	1.85%	0.30%

Median Age Comparison

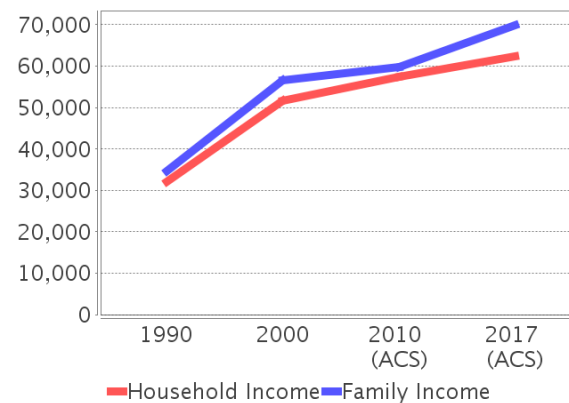


Disability Trends

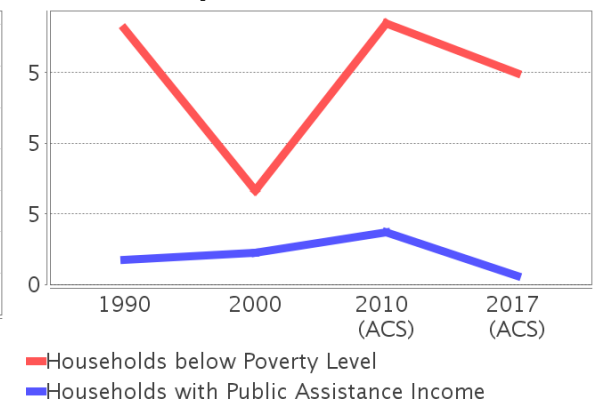
See the Data Sources section below for an explanation about the differences in disability data among the various years.

Description	1990	2000	2010 (ACS)	2017 (ACS)
Population 16 To 64 Years with a disability	29 (6.73%)	83 (12.01%)	(NA)	(NA)
Population 20 To 64 Years with a disability	(NA)	(NA)	(NA)	23 (7.23%)

Income Trends



Poverty and Public Assistance



Educational Attainment Trends

Age 25 and Over

Description	1990	2000	2010 (ACS)	2017 (ACS)
Less than 9th Grade	21 (5.06%)	24 (4.04%)	31 (5.26%)	9 (1.57%)
9th to 12th Grade, No Diploma	73 (17.59%)	62 (10.44%)	30 (5.09%)	15 (2.61%)
High School Graduate or Higher	321 (77.35%)	507 (85.35%)	528 (89.64%)	549 (95.64%)
Bachelor's Degree or Higher	56 (13.49%)	142 (23.91%)	185 (31.41%)	194 (33.80%)

Language Trends

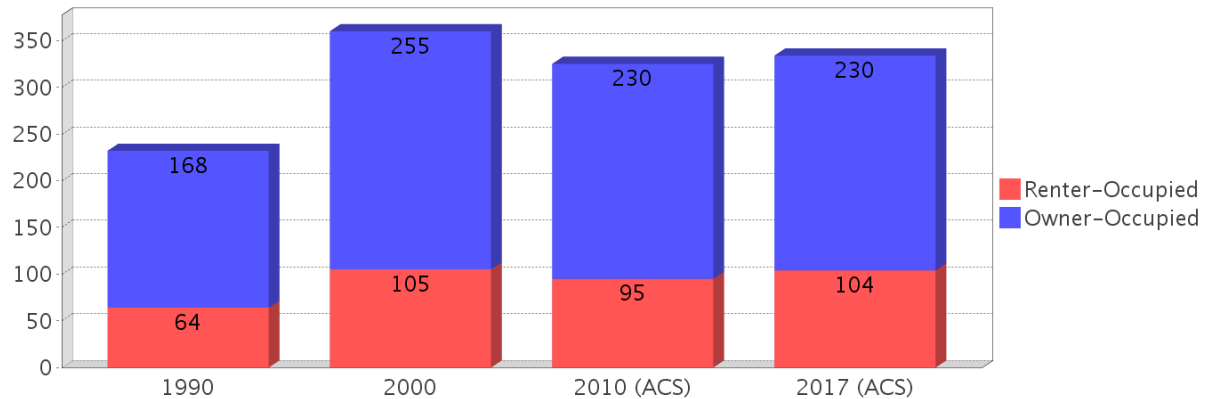
Age 5 and Over

Description	1990	2000	2010 (ACS)	2017 (ACS)
Speaks English Well	4 (0.87%)	15 (2.17%)	8 (1.17%)	11 (1.72%)
Speaks English Not Well	NA (NA)	5 (0.72%)	35 (5.12%)	11 (1.72%)
Speaks English Not at All	NA (NA)	3 (0.43%)	47 (6.87%)	0 (0.00%)
Speaks English Not Well or Not at All	0 (0.00%)	8 (1.16%)	82 (11.99%)	11 (1.72%)

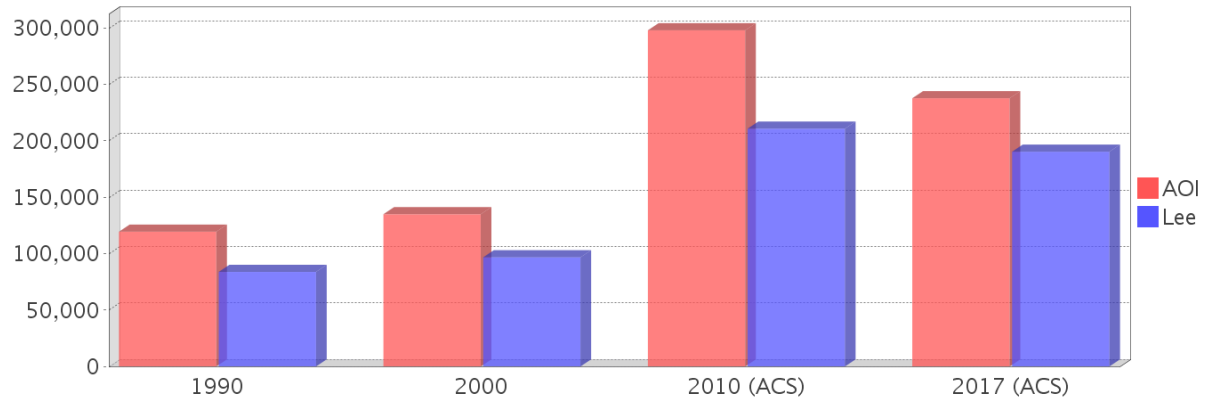
Housing Trends

Description	1990	2000	2010 (ACS)	2017 (ACS)
Total	355	511	497	534
Units per Acre	1.53	1.97	2.42	2.59
Single-Family Units	131	235	294	290
Multi-Family Units	53	184	192	196
Mobile Home Units	47	67	28	47
Owner-Occupied Units	168	255	230	230
Renter-Occupied Units	64	105	95	104
Vacant Units	123	151	173	200
Median Housing Value	\$119,300	\$134,800	\$297,750	\$237,550
Occupied Housing Units w/No Vehicle	10 (4.31%)	9 (2.50%)	7 (2.16%)	11 (3.29%)

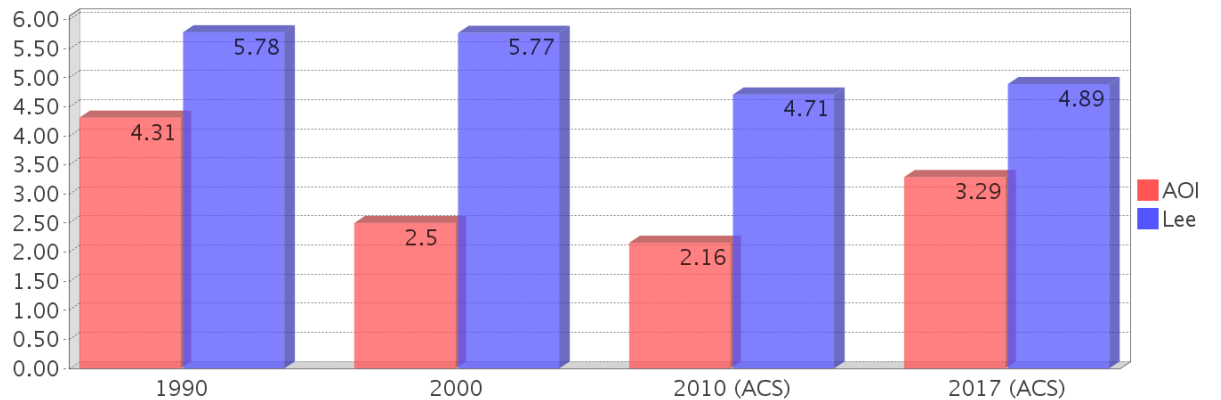
Housing Tenure



Median Housing Value Comparison

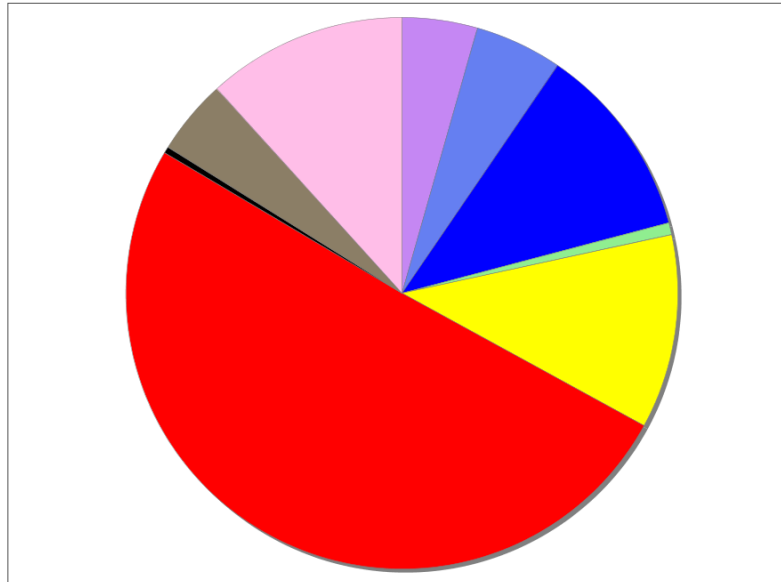


Occupied Units With No Vehicles Available



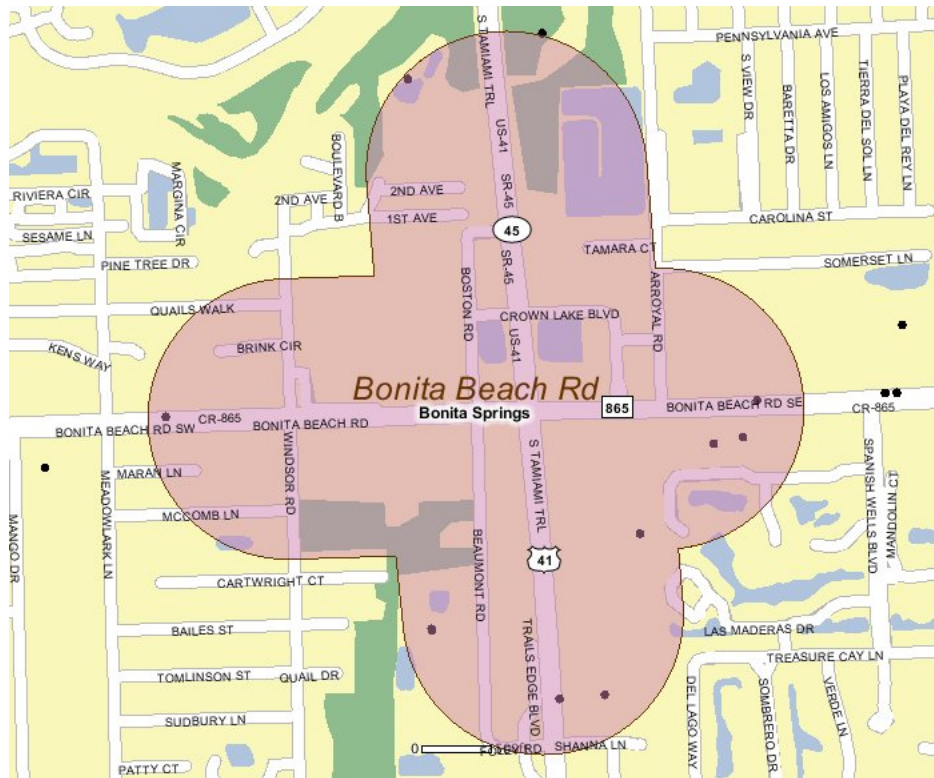
Existing Land Use

Land Use Type	Acres	Percentage
Acreage Not Zoned For Agriculture	0	0.00%
Agricultural	0	0.00%
Centrally Assessed	0	0.00%
Industrial	12	3.75%
Institutional	14	4.37%
Mining	0	0.00%
Other	0	0.00%
Public/Semi-Public	31	9.68%
Recreation	2	0.62%
Residential	31	9.68%
Retail/Office	138	43.08%
Row	1	0.31%
Vacant Residential	12	3.75%
Vacant Nonresidential	32	9.99%
Water	0	0.00%
Parcels With No Values	0	0.00%



- Acreage Not Zoned For Agriculture
- Agricultural
- Centrally Assessed
- Industrial
- Institutional
- Mining
- Other
- Public/Semi-Public
- Recreation
- Residential
- Retail/Office
- Row
- Vacant Residential
- Vacant Nonresidential
- Water
- Parcels With No Values

Location Maps



Community Facilities

The community facilities information below is useful in a variety of ways for environmental evaluations. These community resources should be evaluated for potential sociocultural effects, such as accessibility and relocation potential. The facility types may indicate the types of population groups present in the project study area. Facility staff and leaders can be sources of community information such as who uses the facility and how it is used. Additionally, community facilities are potential public meeting venues.

Community Centers (Points)

Facility Name	Address	Zip Code
KNIGHTS OF COLUMBUS 8877 - SAINT LEO	28290 BEAUMONT RD	34134

Florida Parks and Recreational Facilities (Points)

Facility Name	Address	Zip Code
RIVER PARK	27550 S TAMIAMI TRAIL	34134

Government Building

Facility Name	Address	Zip Code
U S POST OFFICE - BONITA BEACH ROAD	9071 BONITA BEACH RD SE	34135
CITY OF BONITA SPRINGS CITY HALL	9101 BONITA BEACH RD	34135

Healthcare Facilities (Geocoded)

Facility Name	Address	Zip Code
INTEGRATED MEDICAL CENTRE	28315 S TAMIAMI TRAIL, SUITE 101	34134
BONITA SPRINGS DIALYSIS	9134 BONITA BEACH ROAD SE	34135

Law Enforcement Facilities (Points)

Facility Name	Address	Zip Code
LEE COUNTY SHERIFF'S OFFICE - SOUTH DISTRICT (DELTA)	8951 BONITA BEACH RD SE	34134

Mobile Home Parks in Florida

Facility Name	Address	Zip Code
BONITA HEIGHTS TP	3650 BONITA BEACH RD	34134

Religious Centers (Points)

Facility Name	Address	Zip Code
ST LEO CATHOLIC CHURCH	28290 BEAUMONT ROAD	34134

Social Services (Geocoded)

Facility Name	Address	Zip Code
BONITA SPRINGS OUTREACH CENTER	28331 S TAMIAMI TR	34134

US Census Places

Facility Name
Bonita Springs (city)

Block Groups

The following Census Block Groups were used to calculate demographics for this report.

1990 Census Block Groups

120710506005, 120710506003, 120710506002, 120710506006

2000 Census Block Groups

120710506002, 120710506003, 120710506006, 120710506005

2010 Census Block Groups

120710506023, 120710506013, 120710506022, 120710506012

2017 Census Block Groups

120710506013, 120710506012, 120710506022, 120710506023

Data Sources

Area

The geographic area of the community based on a user-specified community boundary or area of interest (AOI) boundary.

Jurisdiction

Jurisdiction(s) includes local government boundaries that intersect the community or AOI boundary.

Demographic Data

Demographic data reported under the headings General Population Trends, Race and Ethnicity Trends, Age Trends, Income Trends, Educational Attainment Trends, Language Trends, and Housing Trends is from the U.S. Decennial Census (1990, 2000) and the American Community Survey (ACS) 5-year estimates from 2006-2010 and 2013-2017. The data was gathered at the block group level for user-specified community boundaries and AOIs, and at the county level for counties. Depending on the dataset, the data represents 100% counts (Census Summary File 1) or sample-based information (Census Summary File 3 or ACS).

About the Census Data:

User-specified community boundaries and AOIs do not always correspond precisely to block group boundaries. In these instances, adjustment of the geographic area and data for affected block groups is required to estimate the actual population. To improve the accuracy of such estimates in the SDR report, the census block group data was adjusted to exclude all census blocks with a population of two or fewer. These areas were eliminated from the corresponding years' block groups. Next, the portion of the block group that lies outside of the community or AOI boundary was removed. The demographics within each block group were then recalculated, assuming an equal area distribution of the population. Note that there may be areas where there is no population.

Use caution when comparing the 100% count data (Decennial Census) to the sample-based data (ACS). In any given year, about one in 40 or 2.5% of U.S. households will receive the ACS questionnaire. Over any five-year period, about one in eight households will receive the questionnaire, as compared to about one in six that received the long form questionnaire for the Decennial Census 2000. (Source: <http://mcdc.missouri.edu/pub/data/acs/Readme.shtml>) The U.S. Census Bureau provides help with this process:

<https://www.census.gov/programs-surveys/acs/guidance/comparing-acs-data/2017.html>

Use caution when interpreting changes in Race and Ethnicity over time. Starting with the 2000 Decennial Census, respondents were given a new option of selecting one or more race categories. Also in 2000, the placement of the question about Hispanic origin changed, helping to increase responsiveness to the Hispanic-origin question. Because of these and other changes, the 1990 data on race and ethnicity are not directly comparable with data from later censuses. (Source: <http://www.census.gov/prod/2001pubs/c2kbr01-1.pdf>; <http://www.census.gov/pred/www/rpts/Race%20and%20Ethnicity%20FINAL%20report.pdf>)

The "Minority" calculations are derived from Census and ACS data using both the race and ethnicity responses. On this report, "Minority" refers to individuals who list a race other than White and/or list their ethnicity as Hispanic/Latino. In other words, people who are multi-racial, any single race other than White, or Hispanic/Latino of any race are considered minorities.

Disability data is not included in the 2010 Decennial Census, or the 2006-2010 ACS. This data is available in the 2013-2017 ACS.

Because of changes made to the Census and ACS questions between 1990 and 2017, disability variables should not be compared from year to year. For example: 1) With the 1990 data the disabilities are listed as a "work disability" while this distinction is not made with 2000 or 2017 ACS data; 2) The 2017 ACS data includes the institutionalized population (e.g. persons in prisons and group homes), while this population is not included in 1990 or 2000; 3) the age groupings changed over the years.

Please take the following two concerns into account when viewing this data: 1) With the 1990 data the disabilities are listed as a "work disability" while this distinction is not made with 2000 or 2017 ACS data; 2) The 2017 ACS data includes the institutionalized population (e.g. persons in prisons and group homes), while this population is not included in 1990 or 2000.

The category Bachelor's Degree or Higher under the heading Educational Attainment Trends is a subset of the category High School Graduate or Higher.

Income of households. This includes the income of the householder and all other individuals 15 years old and over in the household, whether they are related to the householder or not. Because many households consist of only one person, average household income is usually less than average family income.

Income of families. In compiling statistics on family income, the incomes of all members 15 years old and over related to the householder are summed and treated as a single amount.

Age Trends median age for 1990 is not available.

Land Use Data

The Land Use information Indicates acreages and percentages for the generalized land use types used to group parcel-specific, existing land use assigned by the county property appraiser office according to the Florida Department of Revenue land use codes.

Community Facilities Data

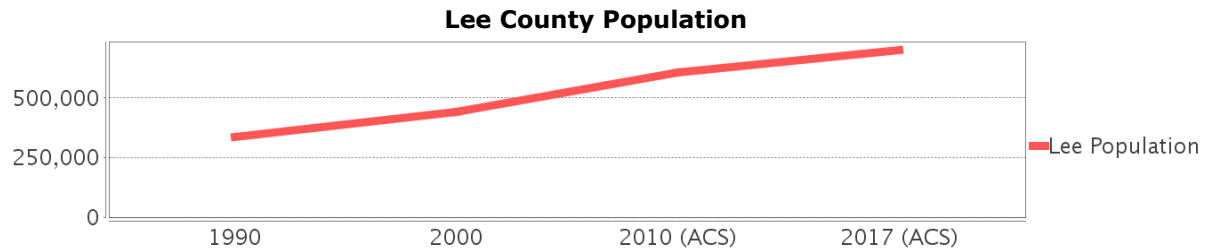
- Assisted Rental Housing Units - Identifies multifamily rental developments that receive funding assistance under federal, state, and local government programs to offer affordable housing as reported by the Shimberg Center for Housing Studies, University of Florida.
- Mobile Home Parks - Identifies approved or acknowledged mobile home parks reported by the Florida Department of Business and Professional Regulation and Florida Department of Health.
- Migrant Camps - Identifies migrant labor camp facilities inspected by the Florida Department of Health.
- Group Care Facilities - Identifies group care facilities inspected by the Florida Department of Health.

- Community Center and Fraternal Association Facilities - Identifies facilities reported by multiple sources.
- Law Enforcement Correctional Facilities - Identifies facilities reported by multiple sources.
- Cultural Centers - Identifies cultural centers including organizations, buildings, or complexes that promote culture and arts (e.g., aquariums and zoological facilities; arboreta and botanical gardens; dinner theaters; drive-ins; historical places and services; libraries; motion picture theaters; museums and art galleries; performing arts centers; performing arts theaters; planetariums; studios and art galleries; and theater producers stage facilities) reported by multiple sources.
- Fire Department and Rescue Station Facilities - Identifies facilities reported by multiple sources.
- Government Buildings - Identifies local, state, and federal government buildings reported by multiple sources.
- Health Care Facilities - Identifies health care facilities including abortion clinics, dialysis clinics, medical doctors, nursing homes, osteopaths, state laboratories/clinics, and surgicenters/walk-in clinics reported by the Florida Department of Health.
- Hospital Facilities - Identifies hospital facilities reported by multiple sources.
- Law Enforcement Facilities - Identifies law enforcement facilities reported by multiple sources.
- Parks and Recreational Facilities - Identifies parks and recreational facilities reported by multiple sources.
- Religious Center Facilities - Identifies religious centers including churches, temples, synagogues, mosques, chapels, centers, and other types of religious facilities reported by multiple sources.
- Private and Public Schools - Identifies private and public schools reported by multiple sources.
- Social Service Centers - Identifies social service centers reported by multiple sources.
- Veteran Organizations and Facilities

Lee County Demographic Profile

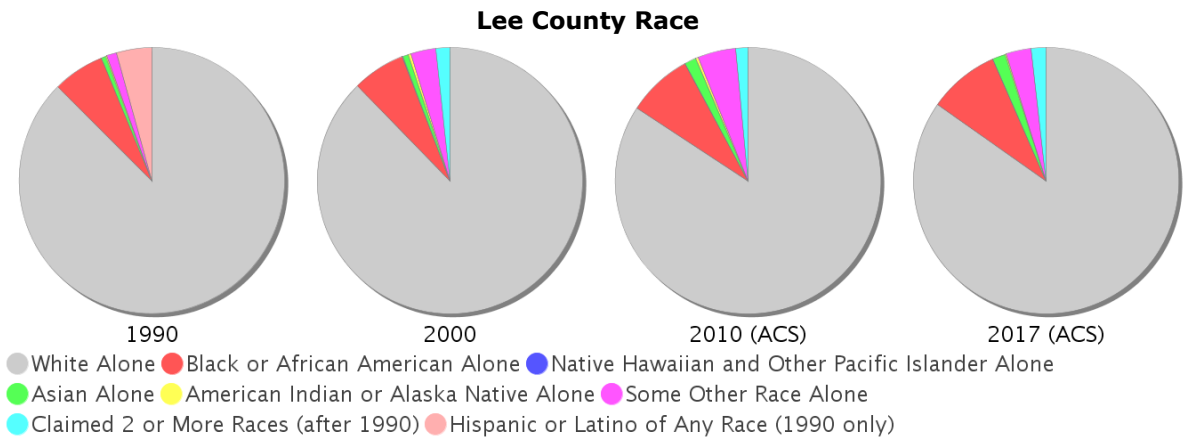
General Population Trends - Lee

Description	1990	2000	2010 (ACS)	2017 (ACS)
Total Population	335,113	440,888	606,165	700,165
Total Households	140,124	188,599	245,751	264,325
Average Persons per Acre	0.641	0.82	1.128	1.302
Average Persons per Household	2.392	2.306	2.00	2.61
Average Persons per Family	2.802	2.809	3.012	3.28
Males	161,917	215,618	298,205	342,731
Females	173,196	225,270	307,960	357,434



Race and Ethnicity Trends - Lee

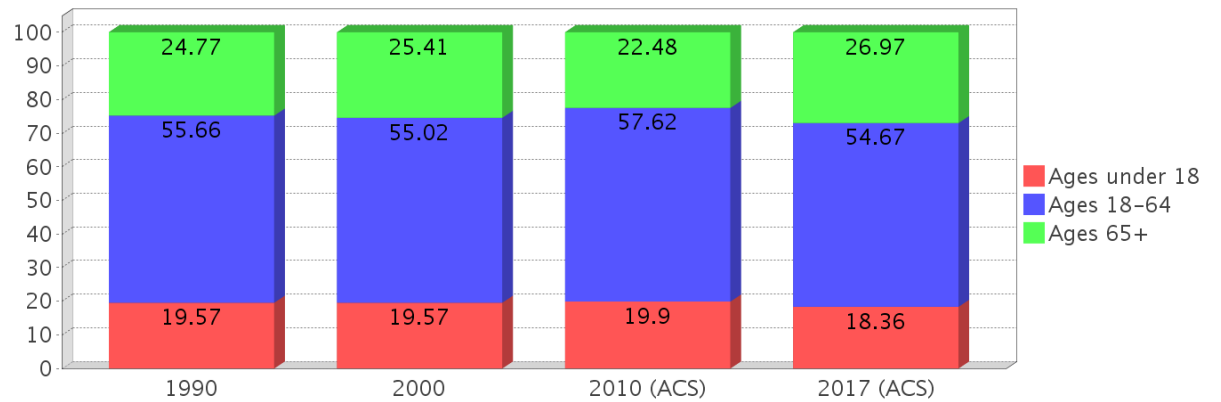
Description	1990	2000	2010 (ACS)	2017 (ACS)
White Alone	306,200 (91.37%)	386,502 (87.66%)	510,405 (84.20%)	593,227 (84.73%)
Black or African American Alone	22,184 (6.62%)	28,570 (6.48%)	48,208 (7.95%)	60,664 (8.66%)
Native Hawaiian and Other Pacific Islander Alone	(NA)	238 (0.05%)	86 (0.01%)	382 (0.05%)
Asian Alone	1,820 (0.54%)	3,159 (0.72%)	8,528 (1.41%)	10,856 (1.55%)
American Indian or Alaska Native Alone	672 (0.20%)	1,340 (0.30%)	1,620 (0.27%)	1,246 (0.18%)
Some Other Race Alone	4,163 (1.24%)	13,489 (3.06%)	28,409 (4.69%)	21,277 (3.04%)
Claimed 2 or More Races	(NA)	7,590 (1.72%)	8,909 (1.47%)	12,513 (1.79%)
Hispanic or Latino of Any Race	15,094 (4.50%)	41,993 (9.52%)	106,696 (17.60%)	141,544 (20.22%)
Not Hispanic or Latino	320,019 (95.50%)	398,895 (90.48%)	499,469 (82.40%)	558,621 (79.78%)
Minority	179,706 (53.63%)	79,629 (18.06%)	179,706 (29.65%)	220,915 (31.55%)



Age Trends - Lee

Description	1990	2000	2010 (ACS)	2017 (ACS)
Under Age 5	5.95%	5.24%	5.57%	4.81%
Ages 5-17	13.62%	14.33%	14.33%	13.54%
Ages 18-21	4.08%	3.48%	4.56%	4.16%
Ages 22-29	10.22%	7.51%	8.64%	8.48%
Ages 30-39	13.70%	12.49%	11.14%	10.42%
Ages 40-49	10.99%	12.99%	12.93%	11.18%
Ages 50-64	16.67%	18.55%	20.35%	20.44%
Age 65 and Over	24.77%	25.41%	22.48%	26.97%
-Ages 65-74	15.35%	13.74%	12.30%	15.17%
-Ages 75-84	7.72%	9.23%	7.52%	8.59%
-Age 85 and Over	1.71%	2.44%	2.66%	3.22%
Median Age	NA	45	45	48

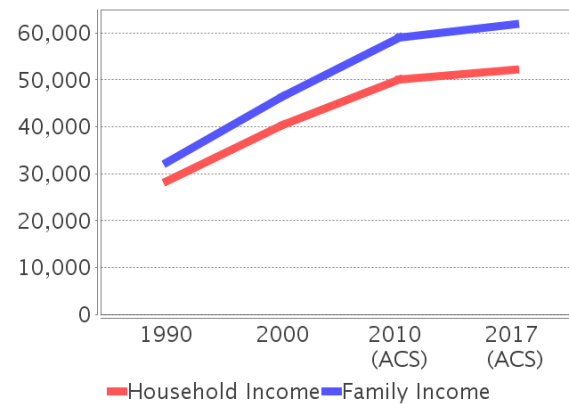
Percentage Population by Age Group - Lee



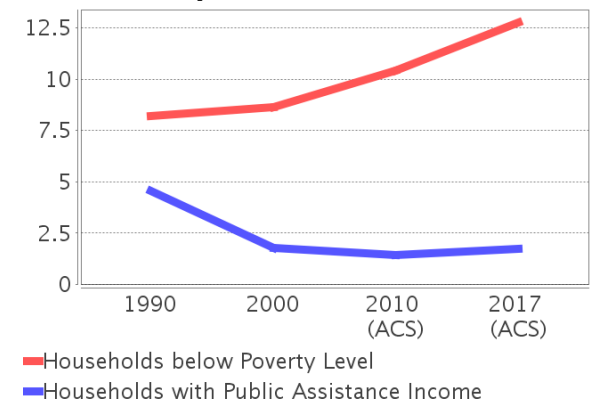
Income Trends - Lee

Description	1990	2000	2010 (ACS)	2017 (ACS)
Median Household Income	\$28,448	\$40,319	\$50,014	\$52,052
Median Family Income	\$32,310	\$46,430	\$58,950	\$61,847
Population below Poverty Level	9.16%	9.73%	12.05%	14.87%
Households below Poverty Level	8.22%	8.64%	10.40%	12.75%
Households with Public Assistance Income	4.56%	1.75%	1.42%	1.72%

Income Trends



Poverty and Public Assistance



Disability Trends - Lee

See the Data Sources section below for an explanation about the differences in disability data among the various years.

Description	1990	2000	2010 (ACS)	2017 (ACS)
Population 16 To 64 Years with a disability	18,191 (6.67%)	51,238 (12.39%)	NA (NA)	NA (NA)
Population 20 To 64 Years with a disability	NA (NA)	NA (NA)	NA (NA)	36,484 (10.02%)

Educational Attainment Trends - Lee

Age 25 and Over

Description	1990	2000	2010 (ACS)	2017 (ACS)
Less than 9th Grade	17,582 (7.16%)	16,393 (5.00%)	21,284 (4.84%)	27,749 (5.32%)
9th to 12th Grade, No Diploma	39,144 (15.94%)	41,627 (12.70%)	37,304 (8.49%)	38,288 (7.34%)
High School Graduate or Higher	188,833 (76.90%)	269,652 (82.29%)	380,870 (86.67%)	455,532 (87.34%)
Bachelor's Degree or Higher	40,392 (16.45%)	69,153 (21.10%)	108,286 (24.64%)	142,016 (27.23%)

Language Trends - Lee

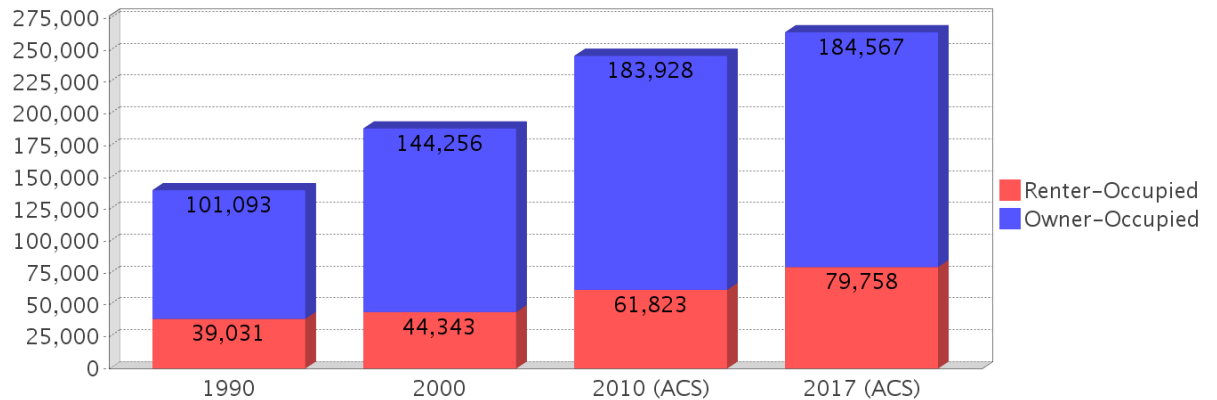
Age 5 and Over

Description	1990	2000	2010 (ACS)	2017 (ACS)
Speaks English Well	5,168 (1.64%)	10,843 (2.60%)	26,023 (4.55%)	25,271 (3.79%)
Speaks English Not Well	NA (NA)	9,080 (2.17%)	22,205 (3.88%)	20,999 (3.15%)
Speaks English Not at All	NA (NA)	4,501 (1.08%)	11,028 (1.93%)	16,443 (2.47%)
Speaks English Not Well or Not at All	3,752 (1.19%)	13,581 (3.25%)	33,233 (5.81%)	37,442 (5.62%)

Housing Trends - Lee

Description	1990	2000	2010 (ACS)	2017 (ACS)
Total	189,051	245,405	363,892	383,224
Units per Acre	0.361	0.457	0.677	0.713
Single-Family Units	82,598	134,511	219,692	238,495
Multi-Family Units	35,495	70,952	103,959	106,749
Mobile Home Units	20,936	38,084	39,641	37,452
Owner-Occupied Units	101,093	144,256	183,928	184,567
Renter-Occupied Units	39,031	44,343	61,823	79,758
Vacant Units	48,927	56,806	118,141	118,899
Median Housing Value	\$83,700	\$96,700	\$210,600	\$190,200
Occupied Housing Units w/No Vehicle	8,105 (5.78%)	10,873 (5.77%)	11,565 (4.71%)	12,930 (4.89%)

Housing Tenure - Lee



County Data Sources

Demographic data reported is from the U.S. Decennial Census (1990, 2000) and the American Community Survey (ACS) 5-year estimates from 2006-2010 and 2013-2017. The data was gathered at the county level. Depending on the dataset, the data represents 100% counts (Census Summary File 1) or sample-based information (Census Summary File 3 or ACS).

About the Census Data:

Use caution when comparing the 100% count data (Decennial Census) to the sample-based data (ACS). In any given year, about one in 40 or 2.5% of U.S. households will receive the ACS questionnaire. Over any five-year period, about one in eight households will receive the questionnaire, as compared to about one in six that received the long form questionnaire for the Decennial Census 2000. (Source: <http://mcdc.missouri.edu/pub/data/acs/Readme.shtml>) The U.S. Census Bureau provides help with this process:

<https://www.census.gov/programs-surveys/acs/guidance/comparing-acs-data/2017.html>

Use caution when interpreting changes in Race and Ethnicity over time. Starting with the 2000 Decennial Census, respondents were given a new option of selecting one or more race categories. Also in 2000, the placement of the question about Hispanic origin changed, helping to increase responsiveness to the Hispanic-origin question. Because of these and other changes, the 1990 data on race and ethnicity are not directly comparable with data from later censuses. (Source: <http://www.census.gov/prod/2001pubs/c2kbr01-1.pdf>;
<http://www.census.gov/pred/www/rpts/Race%20and%20Ethnicity%20FINAL%20report.pdf>)

The "Minority" calculations are derived from Census and ACS data using both the race and ethnicity responses. On this report, "Minority" refers to individuals who list a race other than White and/or list their ethnicity as Hispanic/Latino. In other words, people who are multi-racial, any single race other than White, or Hispanic/Latino of any race are considered minorities.

Disability data is not included in the 2010 Decennial Census, or the 2006-2010 ACS. This data is available in the 2013-2017 ACS.

Because of changes made to the Census and ACS questions between 1990 and 2017, disability variables should not be compared from year to year. For example: 1) With the 1990 data the disabilities are listed as a "work disability" while this distinction is not made with 2000 or 2017 ACS data; 2) The 2017 ACS data includes the institutionalized population (e.g. persons in prisons and group homes), while this population is not included in 1990 or 2000; 3) the age groupings changed over the years.

Please take the following two concerns into account when viewing this data: 1) With the 1990 data the disabilities are listed as a "work disability" while this distinction is not made with 2000 or 2017 ACS data; 2) The 2017 ACS data includes the institutionalized population (e.g. persons in prisons and group homes), while this population is not included in 1990 or 2000.

source:

<https://www.census.gov/people/disability/methodology/acs.html>

<https://www.census.gov/population/www/cen2000/90vs00/index.html>

The category Bachelor's Degree or Higher under the heading Educational Attainment Trends is a subset of the category High School Graduate or Higher.

Metadata

- Community and Fraternal Centers https://etdmpub.florida-et.org/metadata/gc_communitycenter.htm
- Correctional Facilities in Florida https://etdmpub.florida-et.org/metadata/gc_correctional.htm
- Cultural Centers in Florida https://etdmpub.florida-et.org/metadata/gc_culturecenter.htm
- Fire Department and Rescue Station Facilities in Florida https://etdmpub.florida-et.org/metadata/gc_firestat.htm
- Local, State, and Federal Government Buildings in Florida https://etdmpub.florida-et.org/metadata/gc_govbuild.htm
- Florida Health Care Facilities https://etdmpub.florida-et.org/metadata/gc_health.htm
- Hospital Facilities in Florida https://etdmpub.florida-et.org/metadata/gc_hospitals.htm
- Law Enforcement Facilities in Florida https://etdmpub.florida-et.org/metadata/gc_lawenforce.htm
- Florida Parks and Recreational Facilities https://etdmpub.florida-et.org/metadata/gc_parks.htm
- Religious Centers https://etdmpub.florida-et.org/metadata/gc_religion.htm
- Florida Public and Private Schools https://etdmpub.florida-et.org/metadata/gc_schools.htm
- Social Service Centers https://etdmpub.florida-et.org/metadata/gc_socialservice.htm
- Assisted Rental Housing Units in Florida https://etdmpub.florida-et.org/metadata/gc_assisted_housing.htm
- Group Care Facilities <https://etdmpub.florida-et.org/metadata/groupcare.htm>
- Mobile Home Parks in Florida https://etdmpub.florida-et.org/metadata/gc_mobilehomes.htm
- Migrant Camps in Florida <https://etdmpub.florida-et.org/metadata/migrant.htm>
- Veteran Organizations and Facilities https://etdmpub.florida-et.org/metadata/gc_veterans.htm
- Generalized Land Use - Florida DOT District 1 https://etdmpub.florida-et.org/metadata/d1_lu_gen.htm
- Census Block Groups in Florida https://etdmpub.florida-et.org/metadata/e2_cenacs_cci.htm
- 1990 Census Block Groups in Florida https://etdmpub.florida-et.org/metadata/e2_cenblkgrp_1990_cci.htm
- 2000 Census Block Groups in Florida https://etdmpub.florida-et.org/metadata/e2_cenblkgrp_2000_cci.htm
- 2010 Census Block Groups in Florida https://etdmpub.florida-et.org/metadata/e2_cenblkgrp_2010_cci.htm

Appendix C:
Initial Stakeholders Contact List

Stakeholders

Organization	Address Title	First Name	Last Name	Title	E-mail	Address 1	Address 2	City, State, Zip code
1000 Friends of Florida	Ms.	Victoria	Tschinkell	Chairman	friends@1000fof.org	308 North Monroe Street		Tallahassee, FL 32301
Audubon Society of Southwest Florida	Mr.	Dan	VanNorman	President	audubon.southwest.florida@gmail.com	P.O. Box 61041		Fort Myers, FL 33906
Florida Defenders of the Environment	Ms.	Jennifer	Carr	President	floridadefenders@gmail.com	P.O. Box 357086		Gainesville, FL 32635
Sierra Club - Florida Chapter, Calusa Group	Mr.	Clifford	Mitchem	Group Chair	crewswfsolar@gmail.com	379 Shadow Lakes Drive		Lehigh Acres, FL 33974
Florida Wildlife Federation	Mr.	Preston	Roberts	President	preston@fwfonline.org	P.O. Box 6870		Tallahassee, FL 32314
The Nature Conservancy	Ms.	Temperince	Morgan	Executive Director, Florida Division	tmorgan@tnc.org	2500 Maitland Center Parkway	#311	Maitland, FL 32751
Conservancy of Southwest Florida	Mr.	Rob	Moher	President and CEO	robm@conservancy.org	1495 Smith Preserve Way		Naples, FL 34102
Keep Lee County Beautiful, Inc.	Mr.	Tom	Mueller	Chairman	tmueller@covanta.com	P.O. Box 9244		Fort Myers, FL 33906
Arroyal Mall Property Owners Association, Inc.	Mr.	Bryant	Olson	President		C/O Hampton by Hilton	27900 Crown Lake Boulevard	Bonita Springs, FL 34135
Spanish Wells Community Association, Inc.	Mr.	Robert B.	Burandt, Esq.	President		9240 Bonita Beach Road	Ste 3318	Bonita Springs, FL 34135
Marbella at Spanish Wells Homeowners Association	Ms.	Linda	Spotz	President		4670 Cardinal Way	Suite 302	Naples, FL 34112
The Woods Edge Villas Homeowners Association	Mr.	Paul	Paris	Director	pparis103@gmail.com	28436 Hidden Lake Drive		Bonita Springs, FL 34234
Hacienda Village Homeowners Association	Mr.	Jerry	Carlin	President		27861 Village Drive		Bonita Springs, FL 34135
Bonita Village Community Association, Inc.	Mr.	Omer	Dror	President		27901 Bonita Village Road	Suite 2	Bonita Springs, FL 34134

Appendix D:
Initial Property Owner Parcel Map



Legend

- Study Parcel Boundaries
- Lee County Parcel Boundaries

**U.S. 41 PD&E Study Parcels
Bonita Springs, Lee County**

