

MATCHLINE A



MATCHLINE A

MATCHLINE B

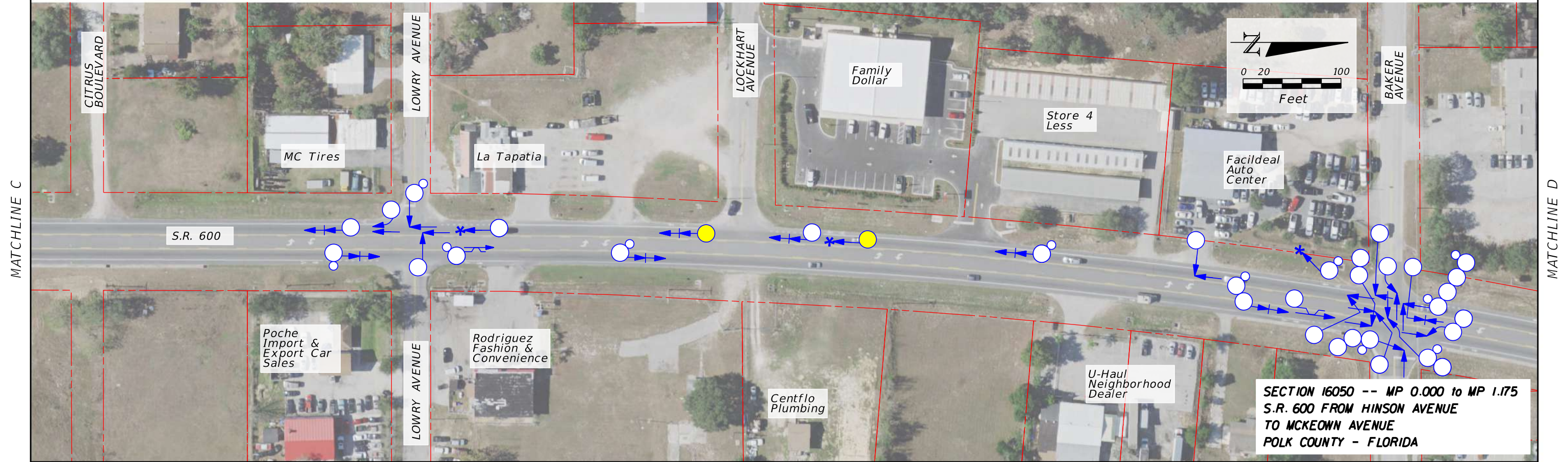
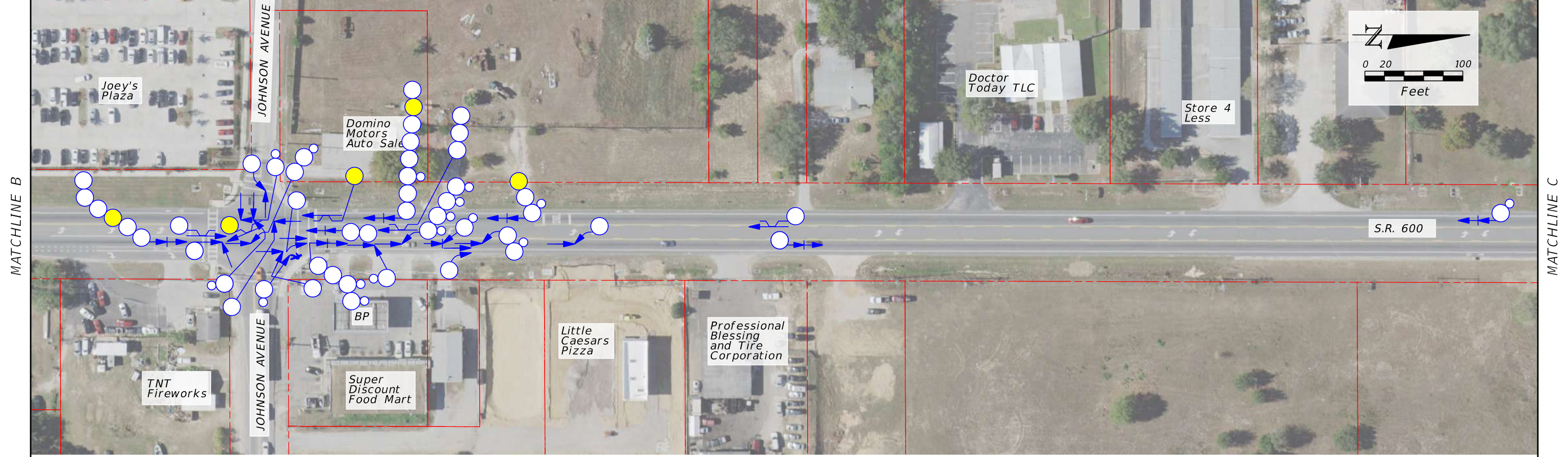
SYMBOLS:			
	SHORT FORM		REAR END COLLISION
	LONG FORM		FIXED OBJECT COLLISION
	PERSONAL INJURY		HEAD-ON COLLISION
	FATALITY		ALL OTHER COLLISION
			BACKED INTO COLLISION
			OFFROAD COLLISION
			OVERTURNED VEHICLE
			SIDE SWIPE COLLISION
			BICYCLE COLLISION
			PEDESTRIAN COLLISION
			RIGHT TURN COLLISION
			LEFT TURN COLLISION

Traffic Engineering Data Solutions, Inc.
 80 Spring Vista Drive Phone: 386.753.0558
 DeBary, FL 32713 Fax: 386.753.0778

STATE OF FLORIDA
 DEPARTMENT OF TRANSPORTATION

COLLISION DIAGRAM
 (1/01/2014 TO 12/31/2018)
 PAGE 1 OF 3

PAGE NO.



**SECTION 16050 -- MP 0.000 to MP 1.175
S.R. 600 FROM HINSON AVENUE
TO MCKEOWN AVENUE
POLK COUNTY - FLORIDA**

SYMBOLS:			
	SHORT FORM		REAR END COLLISION
	LONG FORM		FIXED OBJECT COLLISION
	PERSONAL INJURY		HEAD-ON COLLISION
	FATALITY		ALL OTHER COLLISION
			BACKED INTO COLLISION
			OFFROAD COLLISION
			OVERTURNED VEHICLE
			SIDE SWIPE COLLISION
			BICYCLE COLLISION
			PEDESTRIAN COLLISION
			RIGHT TURN COLLISION
			LEFT TURN COLLISION

Traffic Engineering Data Solutions, Inc.
80 Spring Vista Drive Phone: 386.753.0558
DeBary, FL 32713 Fax: 386.753.0778

STATE OF FLORIDA
DEPARTMENT OF TRANSPORTATION

COLLISION DIAGRAM
(1/01/2014 TO 12/31/2018)
PAGE 2 OF 3

PAGE NO.

MATCHLINE D



**SECTION 16050 -- MP 0.000 to MP 1.175
S.R. 600 FROM HINSON AVENUE
TO MCKEOWN AVENUE
POLK COUNTY - FLORIDA**

SYMBOLS:			
	SHORT FORM		REAR END COLLISION
	LONG FORM		FIXED OBJECT COLLISION
	PERSONAL INJURY		HEAD-ON COLLISION
	FATALITY		ALL OTHER COLLISION
			BACKED INTO COLLISION
			OFFROAD COLLISION
			OVERTURNED VEHICLE
			BICYCLE COLLISION
			PEDESTRIAN COLLISION
			RIGHT TURN COLLISION
			LEFT TURN COLLISION
			SIDE SWIPE COLLISION

Traffic Engineering Data Solutions, Inc.
80 Spring Vista Drive Phone: 386.753.0558
DeBary, FL 32713 Fax: 386.753.0778

STATE OF FLORIDA
DEPARTMENT OF TRANSPORTATION

COLLISION DIAGRAM
(1/01/2014 TO 12/31/2018)
PAGE 3 OF 3

PAGE NO.